

UNLESS OTHERWISE SPECIFIED DIMENSIONS WITHOUT TOLERANCES ARE REFERENCE ONLY

NOTES

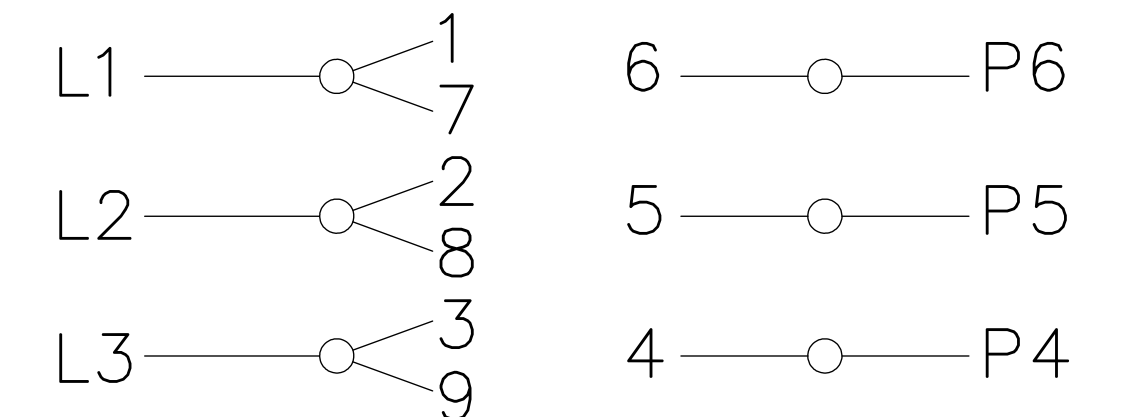
1. CONDUIT BOX SHIPPED UNASSEMBLED

LEADS

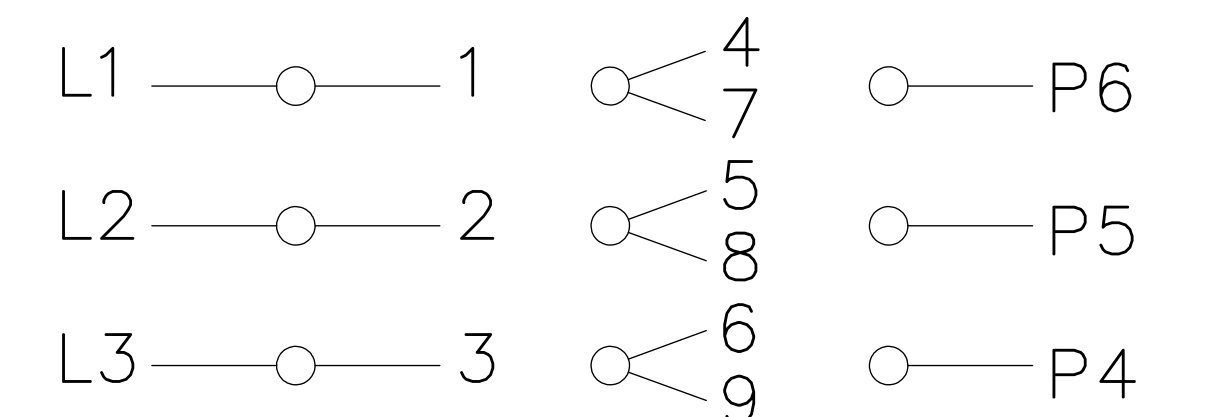
24" +2-0" WITH .44" STRIPPING FROM CONDUIT HUB

EXTERNAL CONNECTIONS

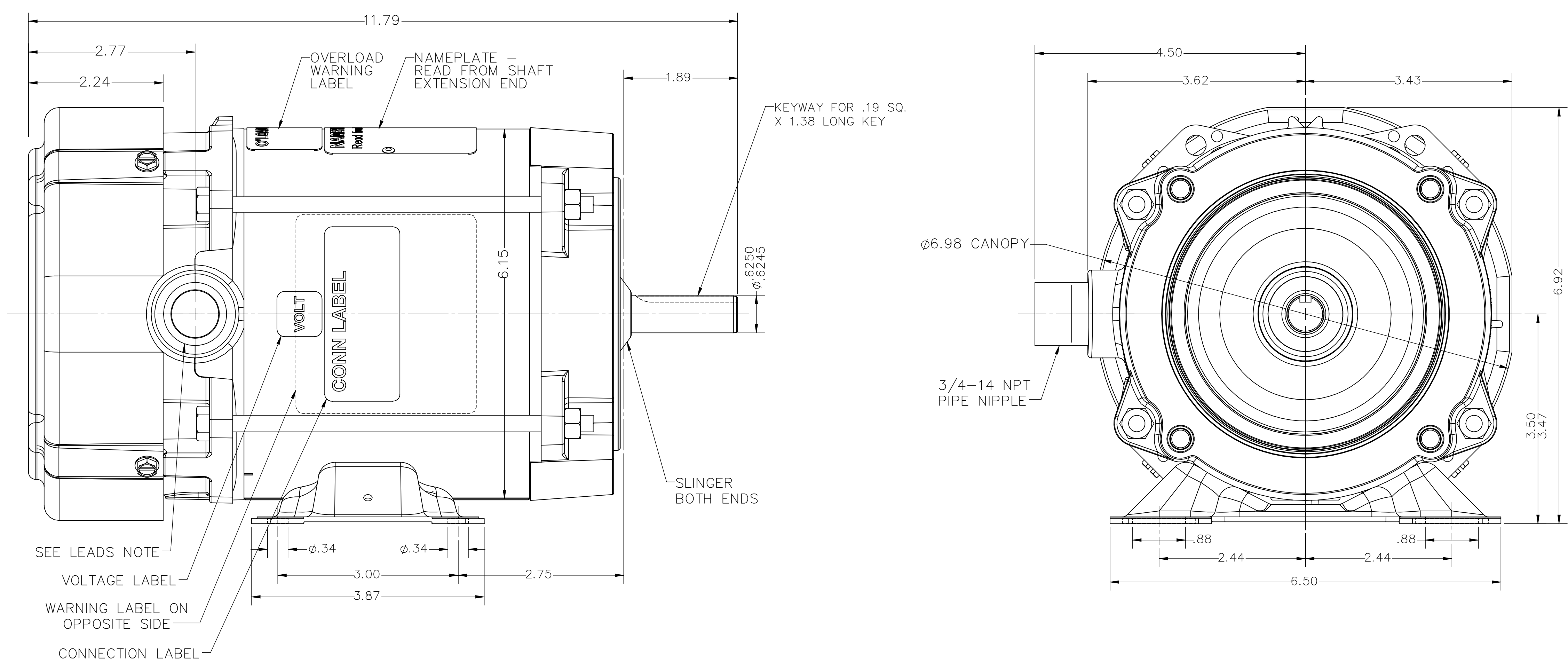
LOW VOLTAGE



HIGH VOLTAGE



GR/YEL —



MOTOR DATA

| | | | | | |
|-----------|-------------|---|-----------|---------------|------|
| TYPE | POLY | SHAFT MATERIAL | CRS | CUSTOMER NAME | WEC |
| HZ | 60 | FRAME | 56 | PHASE | 3 |
| VOLTS | 208-230/460 | ENCLOSURE | TEFC-XP | PAINT | GRAY |
| HP | 0.50 | ENVIRONMENT | NORMAL | BEARINGS | BALL |
| RPM | 3450 | I.P.CODE | IP55 | END CAP | N/R |
| F.L. AMPS | 1.8/.9 | NEMA NOM. EFF. | -% | IE3 | -% |
| S.F. AMPS | - | MOTOR IS LISTED FOR HAZARDOUS LOCATIONS | | | |
| TIME RATE | CONT | CLASS | I-II | TEMP CODE | T3B |
| KVA CODE | M | GROUP | C;D-E;F;G | APPROVED: | |

| | | | |
|--|----------------------|----------------------------|---------------|
| ECN | REV | CHANGE DESCRIPTION | DATE/INITIALS |
| 117579 | 003 | WDG & TEST SPEC WAS 334194 | 1/7/21 AZ |
| THE INFORMATION DISCLOSED HEREIN INCLUDES PROPRIETARY RIGHTS OF WEG. ANY REPRODUCTION OR TRANSFERRAL OF INFORMATION FROM THIS DOCUMENT IS FORBIDDEN WITHOUT PRIOR CONSENT. | | | |
| SIZE | DWG NO. | 1313007443 | |
| D | | | |
| SCALE: 1:1 | DO NOT SCALE DRAWING | SHEET 1 OF 1 | |

1313007443