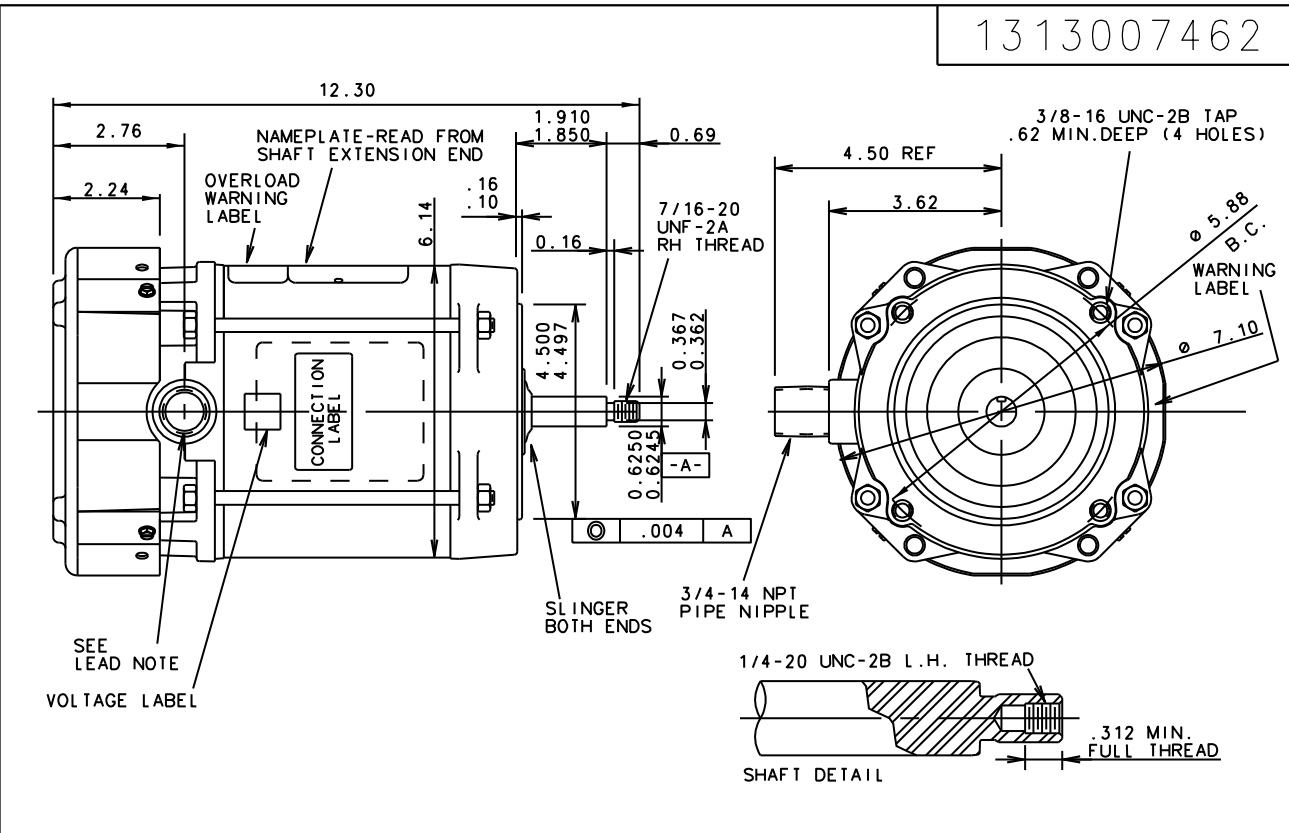


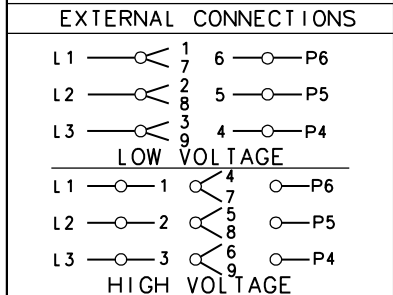
1313007462



UNLESS OTHERWISE SPECIFIED DIMENSIONS WITHOUT TOLERANCES ARE REFERENCE ONLY

- NOTES**
1. MOTOR LISTED FOR HAZARDOUS LOCATION - CLASS I, GROUP C,D AND CLASS II, GROUP E,F,G.
  2. CONDUIT BOX IS SUPPLIED AS UNASSEMBLED ITEM WITH MOTOR
  3. 50HZ NAMEPLATE DATA  
 HP 50  
 V 190/380  
 RPM 2875  
 FLA 2.1/1.05  
 SF 1.0

**LEADS**  
 24"±2-0  
 FROM CONDUIT HUB  
 WITH .44 STRIPPING



**MOTOR DATA**

TYPE	POLYPHASE		ENCLOSURE	TEFC-XPL		VIEWING LEAD END	MOTOR ROTATION	REV
HP	.75		BEARINGS	BALL		ASSEMBLY ROTATION	REV	
PH	3	HZ	60/50	PAINT	GRAY		ASSEMBLY VOLTAGE	HIGH
RPM	3450/2875		SF	1.0		MOUNTING POSITION	HORIZONTAL	
VOLTS	208-230/460		END CAP	CANOPY		THERMALLY PROTECTED	AUTOMATIC	
F.L. AMPS	2.4/1.2		ENVIRONMENTAL CONDITION	NORMAL		WINDING AND TEST SPEC	334195	
S.F. AMPS			ENVIRONMENTAL CONDITION	NORMAL		CUSTOMER NAME	WEG	
FRAME	56J	TEMP CODE	T3B		SHAFT MATERIAL	CUSTOMER PART NO.	.7536XS3EJPR56J	
TIME RATE	CONT	MAX. AMB.	50°C		303 STAINLESS STEEL EXT	DRAWN	GWB 5-31-13	
KVA CODE	K	INS. CLASS	F			APPROVED		
						RELEASED		

GR/YEL

PAR NO	REV NO	CHANGE	FILM	DATE INIT

THE INFORMATION DISCLOSED HEREIN INCLUDES PROPRIETARY RIGHTS OF WEG.  
 ANY REPRODUCTION OR TRANSFERRAL OF INFORMATION FROM THIS DOCUMENT IS FORBIDDEN WITHOUT PRIOR CONSENT.

**WEG**

MODEL NUMBER  
 1313007462

DIST: 3-21(2)-26-31-35