

NPT 1 1/2"

Grounding for leads 5.2-25 mm² / 10-4 AWG

Slinger (Rotating Seal)

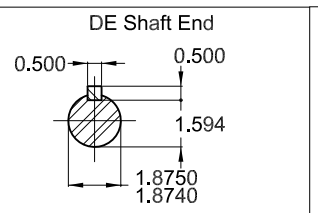
C

D

E

Dimensions in inches

Color RAL 5009
 Painting plan 222P
 Mounting NEMA F-1
 Mounting B3R(D)



15 HP 08 Poles 60 Hz A

						HYBRISUSER								00	
ECM	LOC	SUMMARY OF MODIFICATIONS				EXECUTED	CHECKED	RELEASED	DATE	VER					
EXECUTED	HYBRISUSER	THREE PH. MOTOR EXPLOSION PROOF NEMA PREM. EFF.		FRAME 286T IP55 TEFC		PREVIEW									
CHECKED						WDD		00							
RELEASED						SHEET		1 / 1							
REL. DATE		WMO	Jaragua do Sul	Product Engineering											

