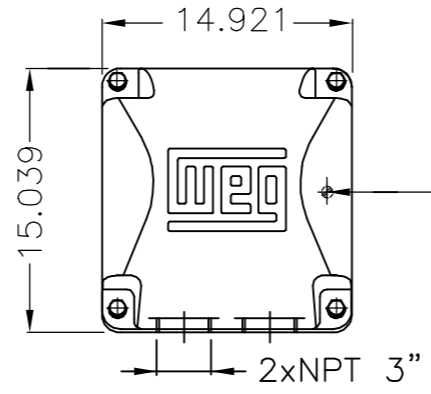
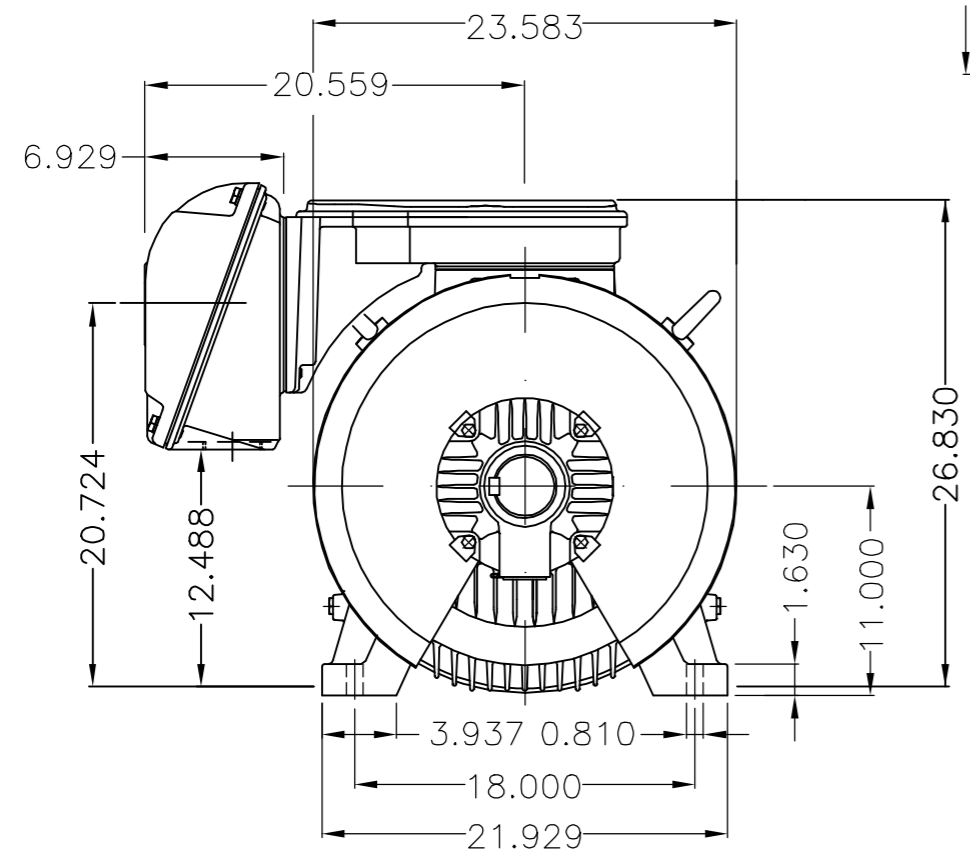


EIXO/SHAFT	
PADRÃO/STANDARD	X
OPCIONAL/OPTIONAL	
ESPECIAL/SPECIAL	

Dimensões em polegada
Dimensions in inches

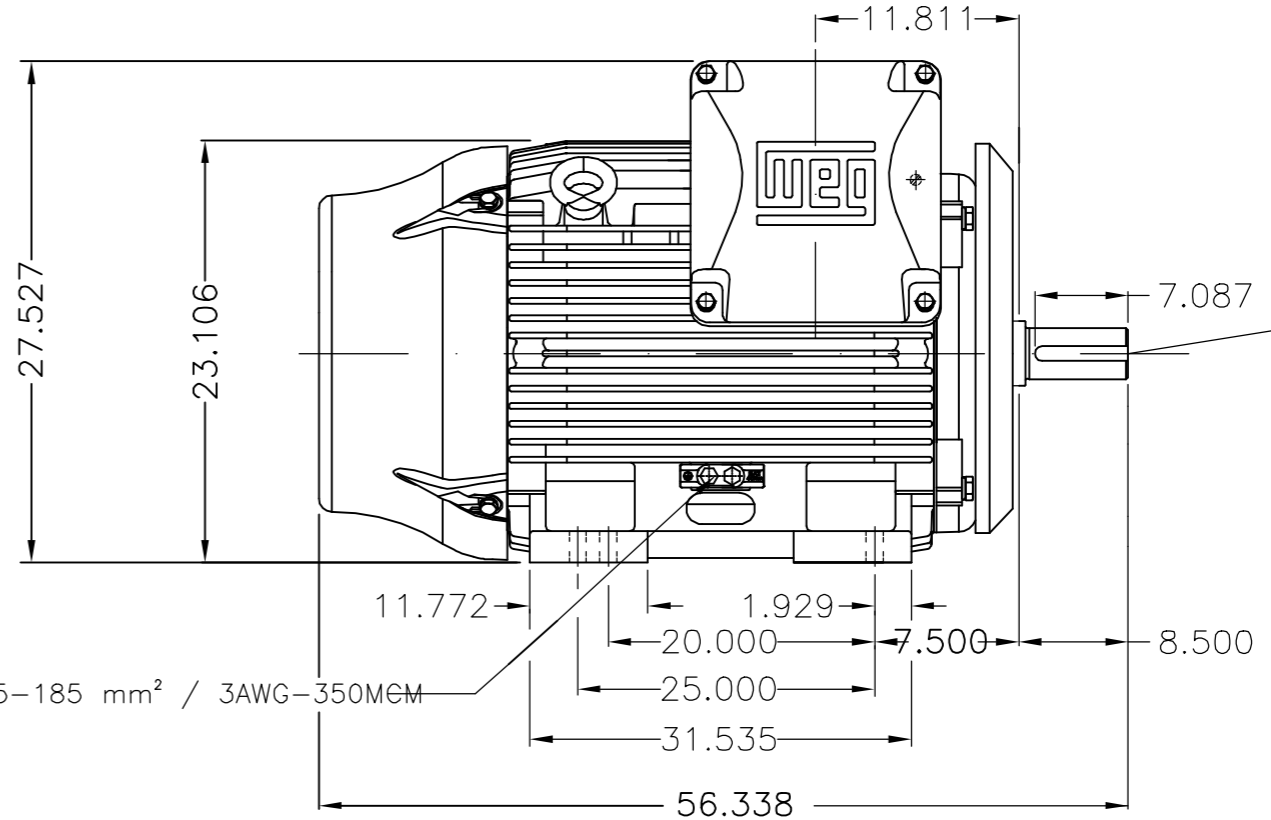
THIS IS AN UPDATED REVISION, THE PREVIOUS ONE MUST BE DISREGARDED.

A
B
C
D
E



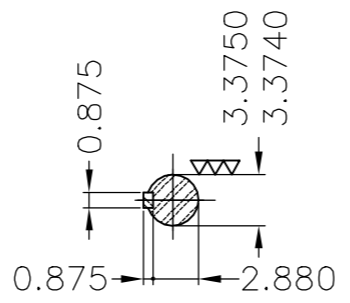
Main terminal box

Grounding for leads 35-70 mm² / 1-2/0 AWG



Grounding for leads 25-185 mm² / 3AWG-350MEM

Center hole
DUNC 3/4"-10 WEG TBG12



DE Shaft End

Plano de pintura 222E / Painting plan 222E	
Dispositivo de travamento de eixo / Shaft locking device	
Rolamento dianteiro de rolos / DE roller bearing	
Tampa traseira com mancal eletricamente isolado NDE endshield with electrically insulated bearing hub	
Defletor de ar dianteiro / Drive-End Air Deflector	
Cor RAL 5009 / Color RAL 5009	
Forma construtiva NEMA F-1 / Mounting NEMA F-1	
Forma construtiva B3D / Mounting B3R(D)	
V.J. PAMENSKY CANADA INC.	

OV: 0004877207							
ECM	LOC	RESUMO MODIFICAÇÃO SUMMARY OF MODIFICATIONS	EXECUTADO EXECUTED	VERIFICADO CHECKED	LIBERADO RELEASED	DATA DATE	VER VER
EXEC. /EXECUTED	PKREYSSIG	THREE PH. W22 NEMA P.EFF MOTOR IEEEE841					
VERIF. /CHECKED	CLEBERP	FRAME 447/9T IP55 TEFC					
LIBER. /RELEASED	CLEBERP						
DATA LB /REL DT	09.07.2018	WMO Jaraguá do Sul	Product Engineering	FOLHA/SHEET	1 / 1		

300 HP 04 Poles 60Hz

A

10005877300
000 | 01

UNCONTROLLED COPY RELEASED ZME A3