

NPT 1 1/2"

Grounding for leads 5.2-25 mm² / 10-4 AWG

Slinger (Rotating Seal)

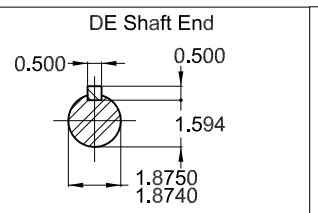
C

D

E

Dimensions in inches

- Color RAL 5009
- Painting plan 202P
- Mounting NEMA F-1
- Mounting B3R(D)



20 HP 06 Poles 60 Hz A

ECM	LOC	SUMMARY OF MODIFICATIONS	EXECUTED	CHECKED	RELEASED	DATE	VER
EXECUTED	DATAVIEWERUSER	THREE PH. MOTOR EXPLOSION PROOF PREM. EFF.					
CHECKED		FRAME 286T IP55 TEFC					
RELEASED							
REL DT.	WMO	Jaragua do Sul	Product Engineering				

PREVIEW
WDD



SHEET 1 / 1