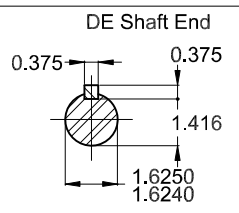
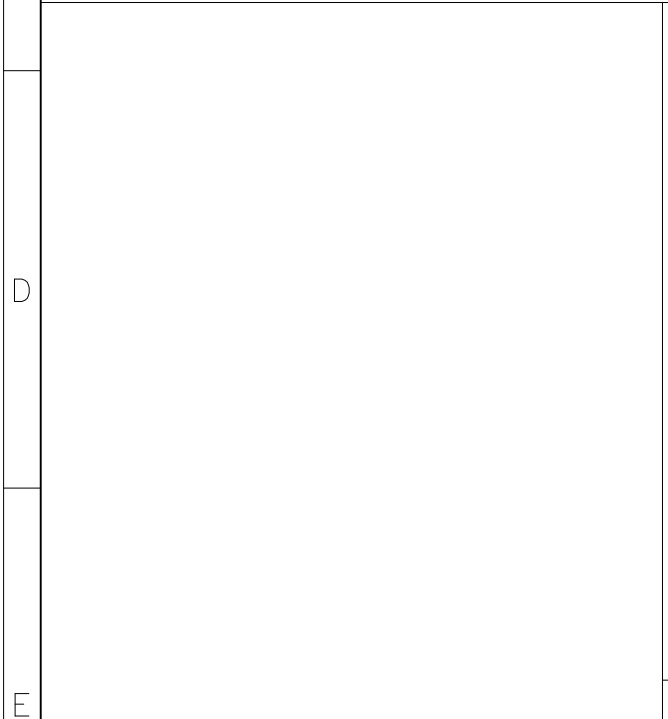


Grounding for leads 5.2-25 mm² / 10-4 AWG



Certification UL/FIRE PUMP
 Color RAL 5009
 Painting plan 203A
 Mounting NEMA F-1
 Mounting B34R(D)

20 HP 02 Poles 60 Hz A

ECM	LOC	SUMMARY OF MODIFICATIONS	EXECUTED	CHECKED	RELEASED	DATE	VER
EXECUTED	HYBRISUSER	THREE PH. MOTOR GENERAL HIGH EFF.					
CHECKED		FRAME 254TC IP23 ODP					
RELEASED							
REL. DATE		WMO Jaragua do Sul					

PREVIEW

WDD | 00

SHEET 1 / 1

