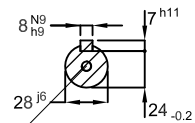


DE Shaft End



DM10 WEG WPR-7339 (DS DIN332)

Color RAL 5009
 Painting plan 207A
 Mounting B3L(E)

5 HP 02 Poles 60 Hz A

ECM	LOC	SUMMARY OF MODIFICATIONS	EXECUTED	CHECKED	RELEASED	DATE	VER
EXECUTED	HYBRISUSER	THREE PH. MOTOR W22 IE3					
CHECKED		FRAME 100L IP55 TEFC					
RELEASED							
REL. DATE							

HYBRISUSER 00

PREVIEW
 WDD | 00
 SHEET /

Dimensions in mm

A3