

NPT 1 1/2"

Grounding for leads 5.2-25 mm² / 10-4 AWG

A

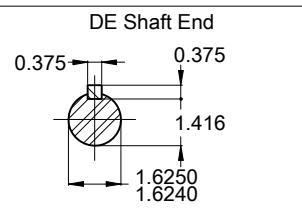
B

C

D

E

With drip cover
 Color RAL 5009
 Painting plan 203A
 Mounting B14R(D)



15 HP 04 Poles 60 Hz A

ECM	LOC	SUMMARY OF MODIFICATIONS	EXECUTED	CHECKED	RELEASED	DATE	VER
EXECUTED	HYBRISUSER	THREE PH. MOTOR GENERAL HIGH EFF.					00
CHECKED		FRAME 254TC IP23 ODP					
RELEASED							
REL. DATE	WMO	Jaragua do Sul	Product Engineering				

PREVIEW

WDD 00

SHEET 1 / 1

