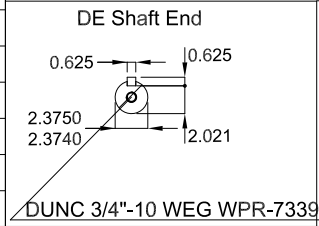


Without vertical jackscrews
 Thermal protection to alarm - thermistors 130°C
 TS shaft end

Grease outlet according to IEEE841
 Thermal protection to switch off - thermistors 155°C
 Color RAL 5009
 Painting plan 222E
 Mounting NEMA W-6
 Mounting V1



200 HP 04 Poles 60 Hz A

ECM	LOC	SUMMARY OF MODIFICATIONS	EXECUTED	CHECKED	RELEASED	DATE	VER
EXECUTED	HYBRISUSER	THREE PH. MOTOR IEEE 841 W22 NEMA PREM. EFF.					
CHECKED		FRAME 444/5TSD IP56 TEFC					
RELEASED							
REL. DATE							

HYBRISUSER 00

PREVIEW
 WDD 00
 SHEET /