

1 2 3 4 5 6

A

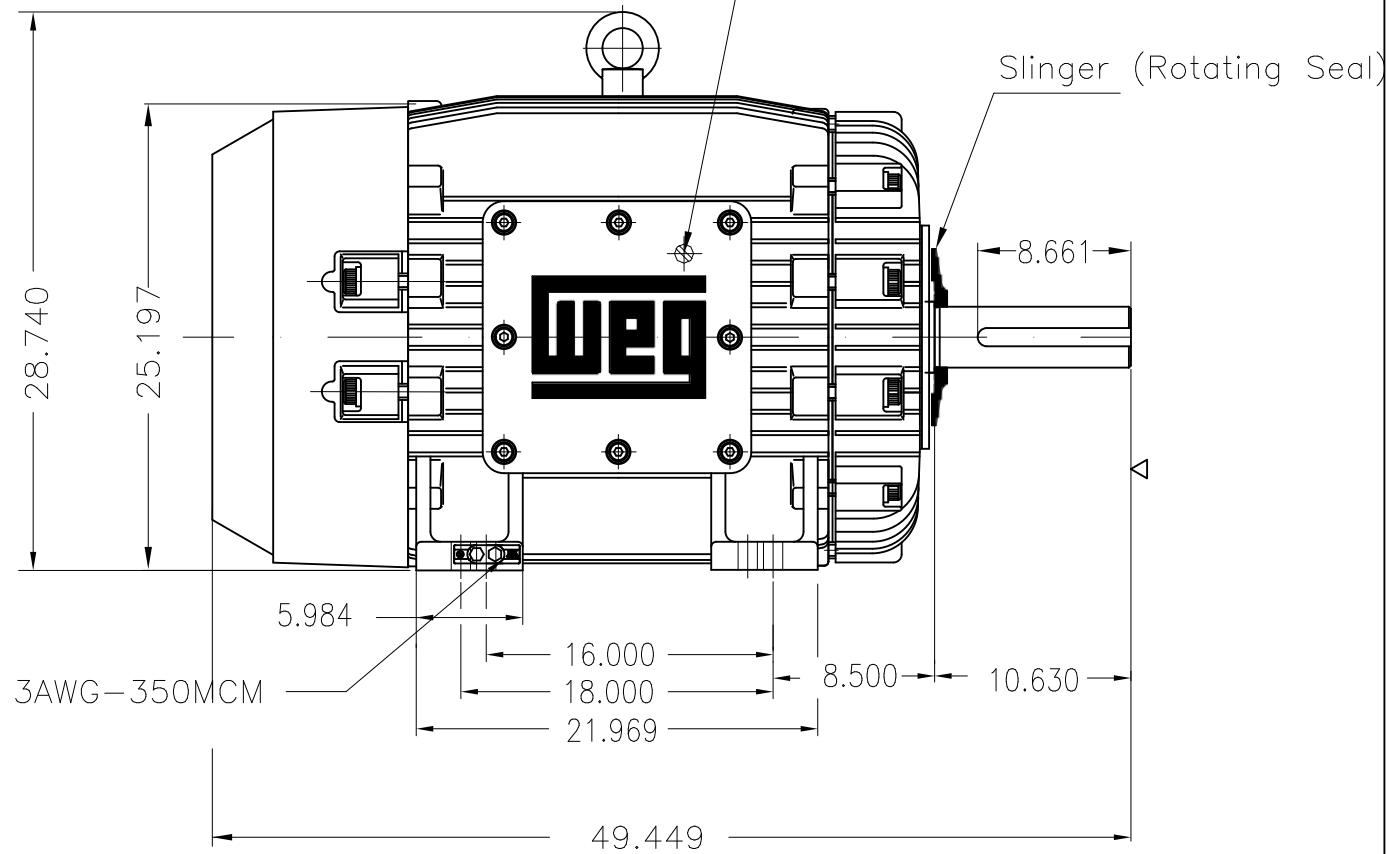
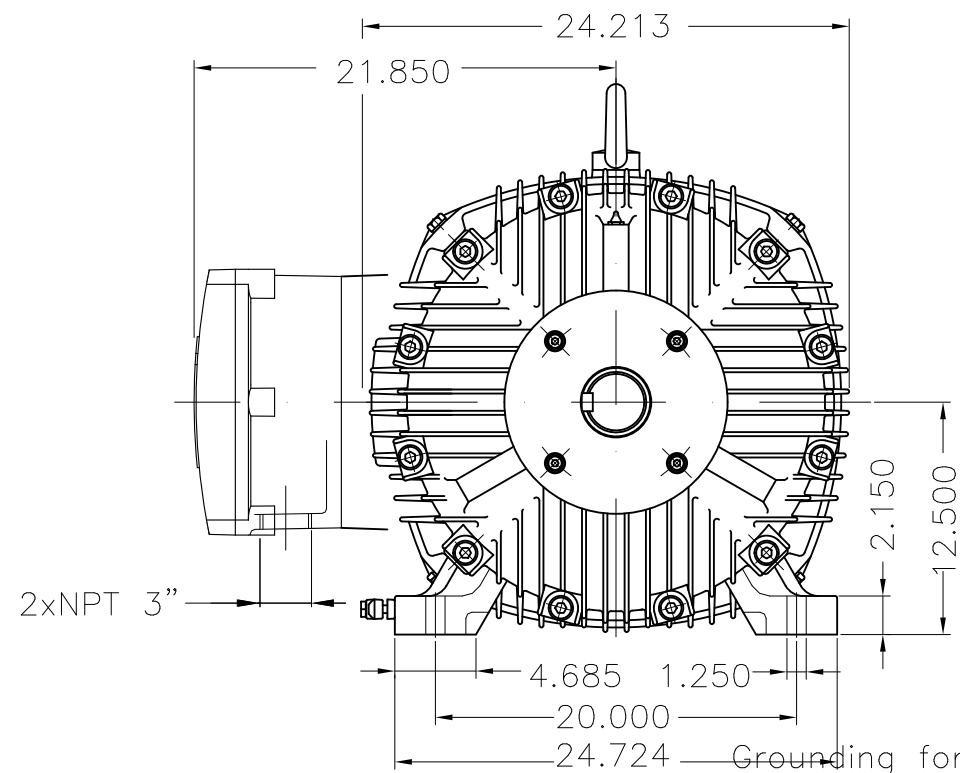
B

C

D

E

Grounding for leads $35-70 \text{ mm}^2 / 1-2/0 \text{ AWG}$



200 HP 04 Poles 60 Hz

A

HYBRISUSER

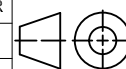
00

ECM LOC

SUMMARY OF MODIFICATIONS

EXECUTED CHECKED RELEASED DATE VER

EXECUTED HYBRISUSER
 CHECKED
 RELEASED
 REL. DATE



THREE PH. MOTOR EXPLOSION PROOF NEMA PREM. EFF.
 FRAME 504/5T IP55 TEFC

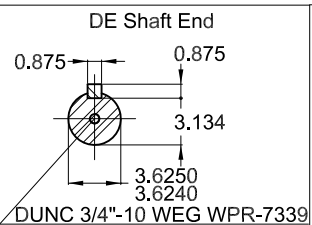
PREVIEW

WDD 00



WMO Jaragua do Sul Product Engineering SHEET 1 / 1

- DE roller bearing
- Shaft locking device
- Color RAL 5009
- Painting plan 222P
- Mounting B3R(D)



Dimensions in inches

XME A3