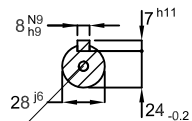


DE Shaft End

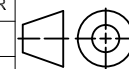


DM10 WEG WPR-7339 (DS DIN332)

Color RAL 5009
 Painting plan 207A
 Mounting B3L(E)

4 HP 02 Poles 60 Hz A

ECM		LOC	SUMMARY OF MODIFICATIONS				HYBRISUSER			00
EXECUTED	CHECKED	RELEASED	DATE	VER	EXECUTED	CHECKED	RELEASED	DATE	VER	
EXECUTED					EXECUTED					
CHECKED										
RELEASED										
REL. DATE										



THREE PH. MOTOR W22 IE3
 FRAME 100L IP55 TEFC

PREVIEW

WDD 00

SHEET /

