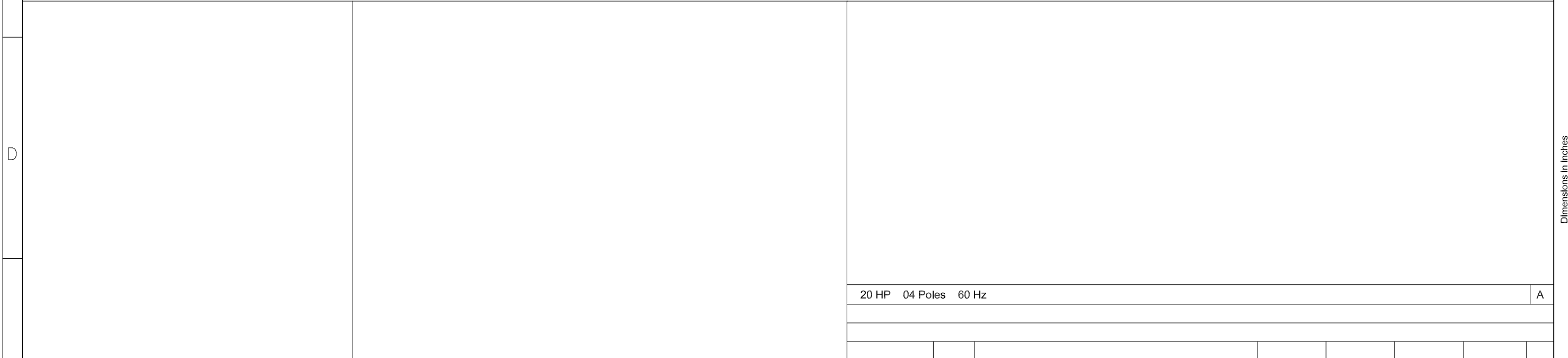


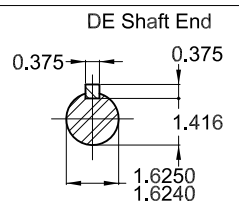
NPT 1 1/2"

Grounding for leads 5.2-25 mm² / 10-4 AWG



20 HP 04 Poles 60 Hz A

Color RAL 5009
 Painting plan 203A
 Mounting B3R(D)



ECM	LOC	SUMMARY OF MODIFICATIONS	EXECUTED	CHECKED	RELEASED	DATE	VER
EXECUTED	HYBRISUSER	THREE PH. MOTOR GENERAL NEMA PREM. EFF.					00
CHECKED		FRAME 256T IP23 ODP					
RELEASED							
REL. DATE		WMO Jaragua do Sul	Product Engineering				

PREVIEW

WDD 00

SHEET 1 / 1