

DATA SHEET

Three Phase Induction Motor - Squirrel Cage



Customer : V.J. PAMENSKY CANADA INC.

Product line : W01 - TEFC - Nema Premium Efficiency JM Derating Product code : 14616801

Frame	: 213/5JM	Cooling method	: IC411 - TEFC
Insulation class	: F	Mounting	: F-1/B34R(D)
Duty cycle	: S1	Rotation ¹	: Both
Ambient temperature	: -20 °C to +40 °C	Starting method	: Direct On Line
Altitude	: 3280 ft	Approx. weight ³	: 130 lb
Protection degree	: IP55	Moment of inertia (J)	: 1.08 sq.ft.lb
Design	: B		

	3 HP (2.2 kW)	3 HP (2.2 kW)	3 HP (2.2 kW)
Output	3 HP (2.2 kW)	3 HP (2.2 kW)	3 HP (2.2 kW)
Poles	6	6	6
Frequency	60 Hz	50 Hz	50 Hz
Rated voltage	230/460 V	190/380 V	220/415 V
Rated current	8.12/4.06 A	9.76/4.88 A	8.75/4.64 A
L. R. Amperes	52.8/26.4 A	50.8/25.4 A	54.3/28.8 A
LRC	6.5	5.2	6.2
No load current	4.20/2.10 A	4.20/2.10 A	4.34/2.30 A
Rated speed	1180 rpm	975 rpm	980 rpm
Slip	1.67 %	2.50 %	2.00 %
Rated torque	13.2 ft.lb	15.9 ft.lb	15.8 ft.lb
Locked rotor torque	200 %	140 %	190 %
Pull up torque	170 %	115 %	160 %
Breakdown torque	250 %	190 %	230 %
Service factor	1.15	1.15	1.15
Temperature rise	80 K	80 K	80 K
Noise level ²	55.0 dB(A)	53.0 dB(A)	53.0 dB(A)
Locked rotor time (hot)	46 s	55 s	46 s
Locked rotor time (cold)	83 s	99 s	83 s
Efficiency (%)	50%	85.5	85.0
	75%	88.5	85.6
	100%	89.5	85.6
Power Factor	50%	0.60	0.64
	75%	0.70	0.76
	100%	0.76	0.80

Losses at normative operating points (speed;torque), in percentage of rated output power

Losses (%)			
Losses (%)	P1(0,9;1,0)	11.1	16.0
	P2(0,5;1,0)	8.9	12.8
	P3(0,25;1,0)	8.1	11.6
	P4(0,9;0,5)	6.2	8.9
	P5(0,5;0,5)	4.2	6.0
	P6(0,5;0,25)	3.1	4.5
	P7(0,25;0,25)	2.3	3.3

Bearing type	Drive end	Non drive end	Foundation loads
	6209-ZZ	6206-ZZ	
Lubrication interval	-	-	Max. compression :
Lubricant amount	-	-	Load type :-
Lubricant type	MOBIL POLYREX EM		Load torque :-
			Load inertia (J=GD ² /4) :-

Notes
See notes on page 2.

Rev.	Changes Summary	Rev.	Checked	Date
Performed by	farazq			1865121251
Checked by	AUTOMATICO		Page	Rev.
Date	24/06/2026		1 / 2	0

DATA SHEET

Three Phase Induction Motor - Squirrel Cage



Customer : V.J. PAMENSKY CANADA INC.

Product line : W01 - TEFC - Nema Premium Efficiency JM Derating
Product code : 14616801

Thermal protection ID	Application	Type	Quantity	Sensing Temperature
-----------------------	-------------	------	----------	---------------------

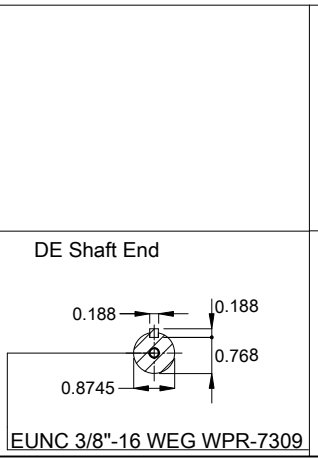
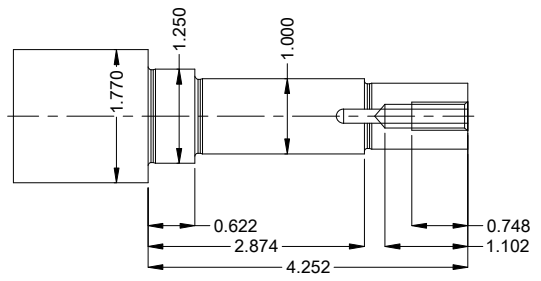
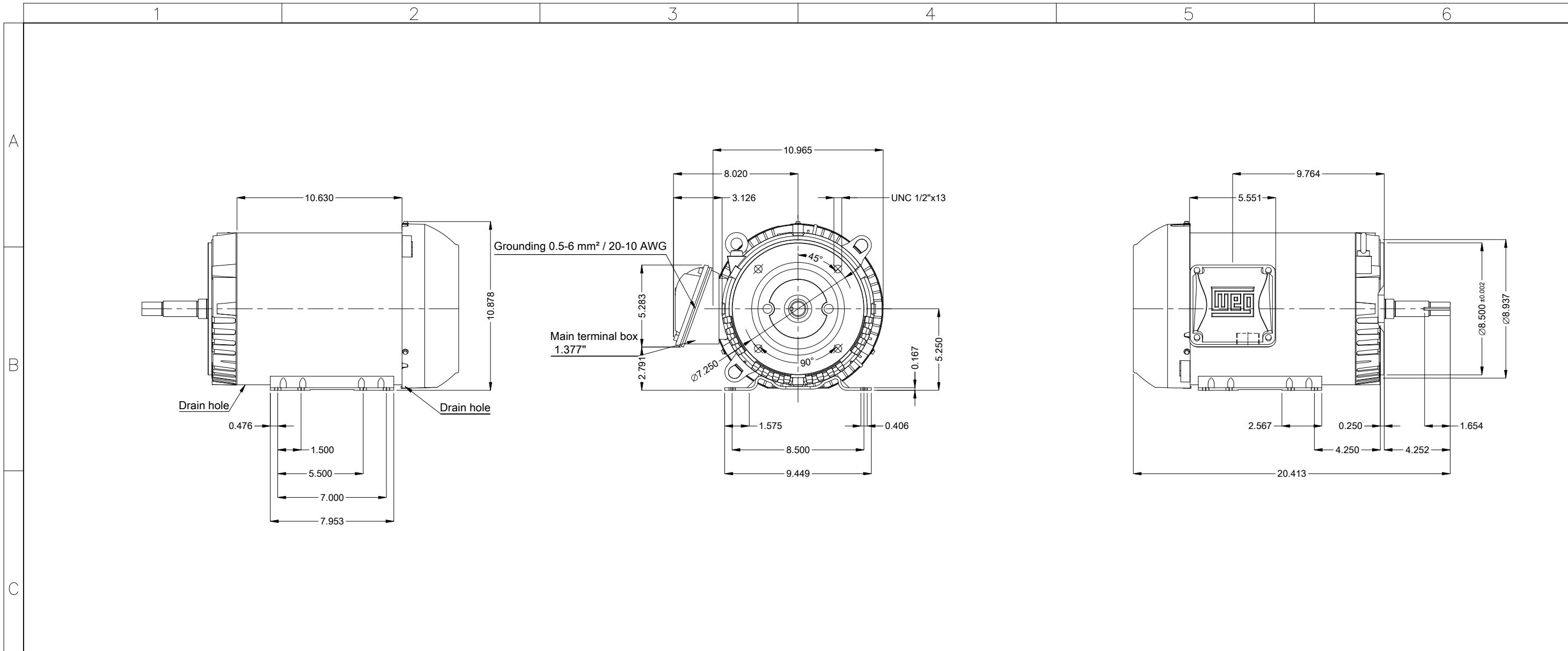
Notes
USABLE @208V 9.22A SF 1.15 SFA 10.6A

Standards	Specification	: MG1 - Part 10	Vibration	: MG1 - Part 7
	Test	: MG1 - Part 12	Tolerance	: MG1 - Part 12
	Noise	: MG1 - Part 9		

This revision replaces and cancel the previous one, which must be eliminated.
(1) Looking the motor from the shaft end.
(2) Measured at 1m and with tolerance of +3dB(A).
(3) Approximate weight, subject to be changed after manufacturing process.

These are average values based on tests with sinusoidal power supply, subject to the tolerances stipulated in NEMA MG 1-12.

Rev.	Changes Summary	Rev.	Checked	Date
Performed by	farazq		1865121251	
Checked by	AUTOMATICO		Page	Rev.
Date	24/06/2026		2 / 2	0



Internal AEGIS ground ring on the DE
 Color Munsell N 1 matte black
 Painting plan 207N
 Mounting MARKET F-1/B34R(D)
 Mounting B34D

3 HP 06 Poles 60 Hz										A
Scale										2 : 13
HYBRISUSER										00
ECM	LOC	SUMMARY OF MODIFICATIONS				EXECUTED	CHECKED	RELEASED	DATE	VER
EXECUTED	HYBRISUSER	THREE PH. MOTOR ROLLED STEEL JM NEMA PREM. EFF.					PREVIEW			
CHECKED		FRAME 213/5JM IP55 TEFC					WDD	00		
RELEASED							SHEET	1 / 1		
REL. DATE										