

# DATA SHEET

## Three Phase Induction Motor - Squirrel Cage



Customer :				
Product line : Three-Phase		Product code : 14477527		
Frame : W56C	Insulation class : F	Cooling method : IC411 - TEFC	Mounting : F-1	
Duty cycle : Cont.(S1)	Ambient temperature : -20°C to +40°C	Rotation <sup>1</sup> : Both (CW and CCW)	Starting method : Direct On Line	
Altitude : 1000 m.a.s.l.	Protection degree : IP55	Approx. weight <sup>3</sup> : 7.9 kg	Moment of inertia (J) : 0.0015 kgm <sup>2</sup>	
Output [HP]	0.33			
Poles	4			
Frequency [Hz]	60			
Rated voltage [V]	575			
Rated current [A]	0.499			
L. R. Amperes [A]	3.10			
LRC [A]	6.2x(Code L)			
No load current [A]	0.380			
Rated speed [RPM]	1740			
Slip [%]	3.33			
Rated torque [kgfm]	0.138			
Locked rotor torque [%]	260			
Breakdown torque [%]	350			
Service factor	1.15			
Temperature rise	80 K			
Locked rotor time	39s (cold) 22s (hot)			
Noise level <sup>2</sup>	50.0 dB(A)			
Efficiency (%)	25%			
	50%	66.0		
	75%	72.0		
	100%	74.0		
Power Factor	25%			
	50%	0.46		
	75%	0.58		
	100%	0.68		
Bearing type	: Drive end 6203 ZZ	Non drive end 6202 ZZ	Foundation loads	
Sealing	: V'Ring	V'Ring	Max. traction : 11 kgf	
Lubrication interval	: -	-	Max. compression : 19 kgf	
Lubricant amount	: -	-		
Lubricant type	: Mobil Polyrex EM			
Notes				
<p>This revision replaces and cancel the previous one, which must be eliminated.</p> <p>(1) Looking the motor from the shaft end.</p> <p>(2) Measured at 1m and with tolerance of +3dB(A).</p> <p>(3) Approximate weight subject to changes after manufacturing process.</p> <p>(4) At 100% of full load.</p>			<p>These are average values based on tests with sinusoidal power supply, subject to the tolerances stipulated in NEMA MG-1.</p>	
Rev.	Changes Summary		Performed	Checked
Performed by				
Checked by			Page	Revision
Date	17/05/2022		1 / 2	

# LOAD PERFORMANCE CURVE

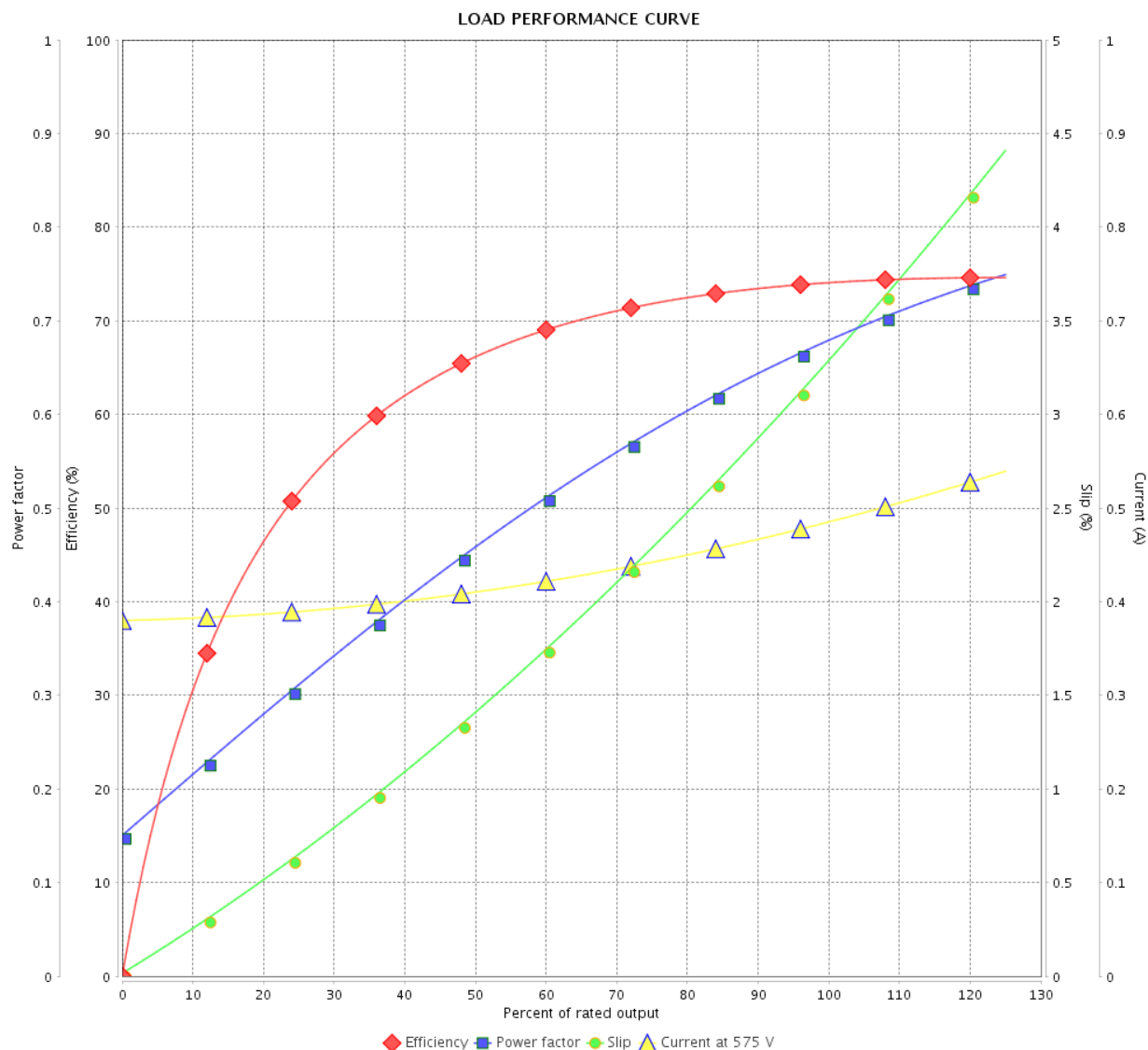
Three Phase Induction Motor - Squirrel Cage



Customer :

Product line : Three-Phase

Product code : 14477527

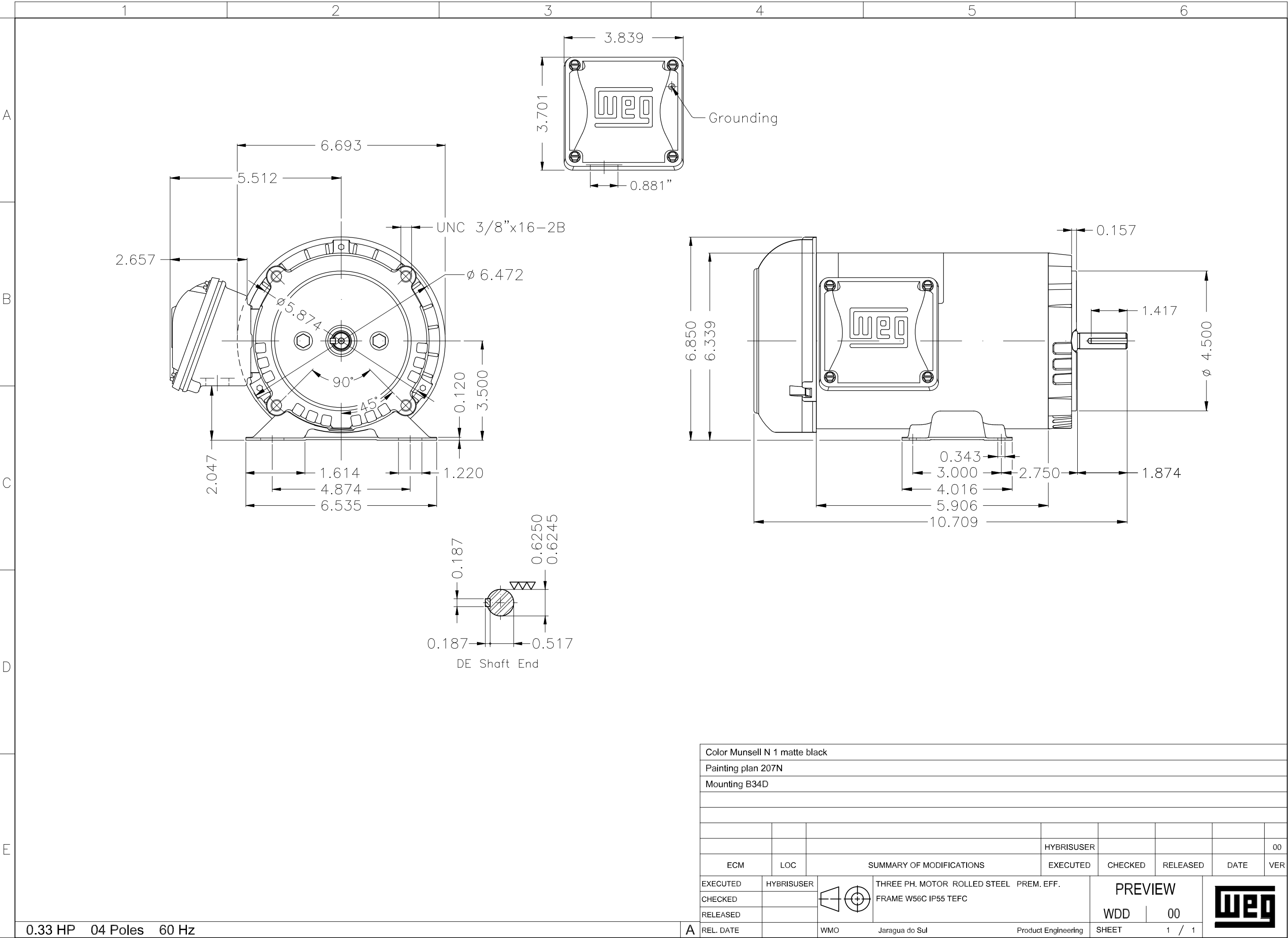


Performance : 575 V 60 Hz 4P

Rated current : 0.499 A  
 LRC : 6.2  
 Rated torque : 0.138 kgfm  
 Locked rotor torque : 260 %  
 Breakdown torque : 350 %  
 Rated speed : 1740 rpm

Moment of inertia (J) : 0.0015 kgm<sup>2</sup>  
 Duty cycle : Cont.(S1)  
 Insulation class : F  
 Service factor : 1.15  
 Temperature rise : 80 K

Rev.	Changes Summary	Performed	Checked	Date
Performed by		Page 2 / 2Revision		
Checked by				
Date	17/05/2022			



Color Munsell N 1 matte black									
Painting plan 207N									
Mounting B34D									