

DATA SHEET

Three Phase Induction Motor - Squirrel Cage



Customer :				
Product line	: Three-Phase	Product code :	14453334	
Frame	: W56	Cooling method	: IC411 - TEFC	
Insulation class	: F	Mounting	: F-1	
Duty cycle	: Cont.(S1)	Rotation ¹	: Both (CW and CCW)	
Ambient temperature	: -20°C to +40°C	Starting method	: Direct On Line	
Altitude	: 1000 m.a.s.l.	Approx. weight ³	: 7.8 kg	
Protection degree	: IP55	Moment of inertia (J)	: 0.0015 kgm ²	
Output [HP]	0.33			
Poles	4			
Frequency [Hz]	60			
Rated voltage [V]	575			
Rated current [A]	0.499			
L. R. Amperes [A]	3.10			
LRC [A]	6.2x(Code L)			
No load current [A]	0.380			
Rated speed [RPM]	1740			
Slip [%]	3.33			
Rated torque [kgfm]	0.138			
Locked rotor torque [%]	260			
Breakdown torque [%]	350			
Service factor	1.15			
Temperature rise	80 K			
Locked rotor time	39s (cold) 22s (hot)			
Noise level ²	50.0 dB(A)			
Efficiency (%)	25%			
	50%	66.0		
	75%	72.0		
	100%	74.0		
Power Factor	25%			
	50%	0.46		
	75%	0.58		
	100%	0.68		
Bearing type	: <u>Drive end</u> 6203 ZZ	<u>Non drive end</u> 6202 ZZ	Foundation loads	
Sealing	: V'Ring	V'Ring	Max. traction : 11 kgf	
Lubrication interval	: -	-	Max. compression : 19 kgf	
Lubricant amount	: -	-		
Lubricant type	: Mobil Polyrex EM			
Notes				
This revision replaces and cancel the previous one, which must be eliminated. (1) Looking the motor from the shaft end. (2) Measured at 1m and with tolerance of +3dB(A). (3) Approximate weight subject to changes after manufacturing process. (4) At 100% of full load.		These are average values based on tests with sinusoidal power supply, subject to the tolerances stipulated in NEMA MG-1.		
Rev.	Changes Summary	Performed	Checked	Date
Performed by				
Checked by			Page	Revision
Date	17/05/2022		1 / 2	

LOAD PERFORMANCE CURVE

Three Phase Induction Motor - Squirrel Cage

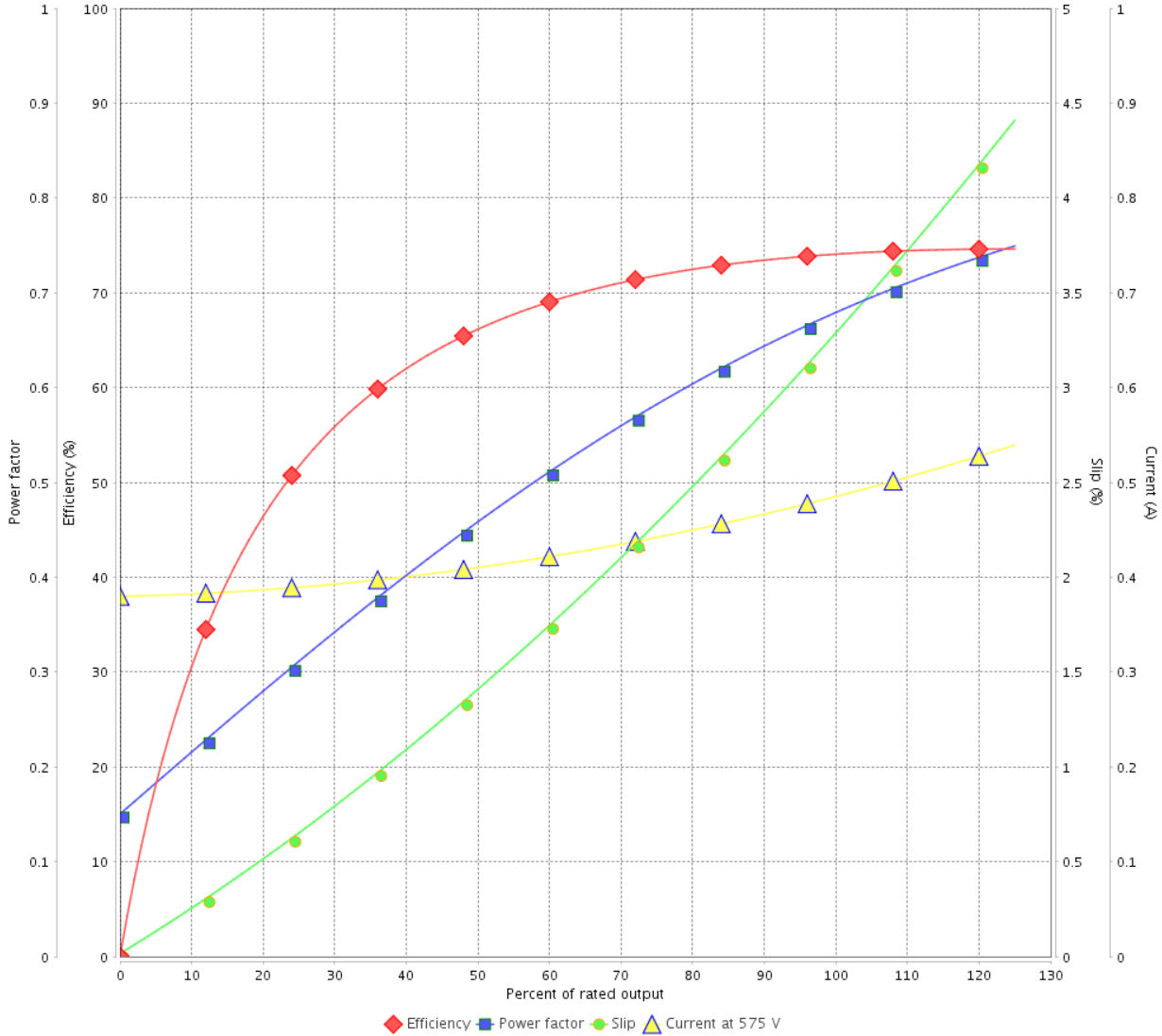


Customer :

Product line : Three-Phase

Product code : 14453334

LOAD PERFORMANCE CURVE

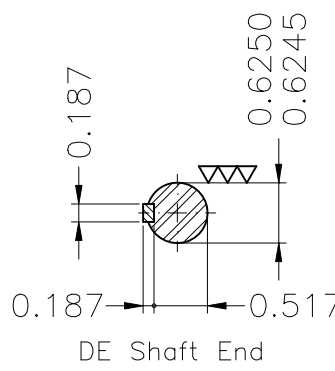
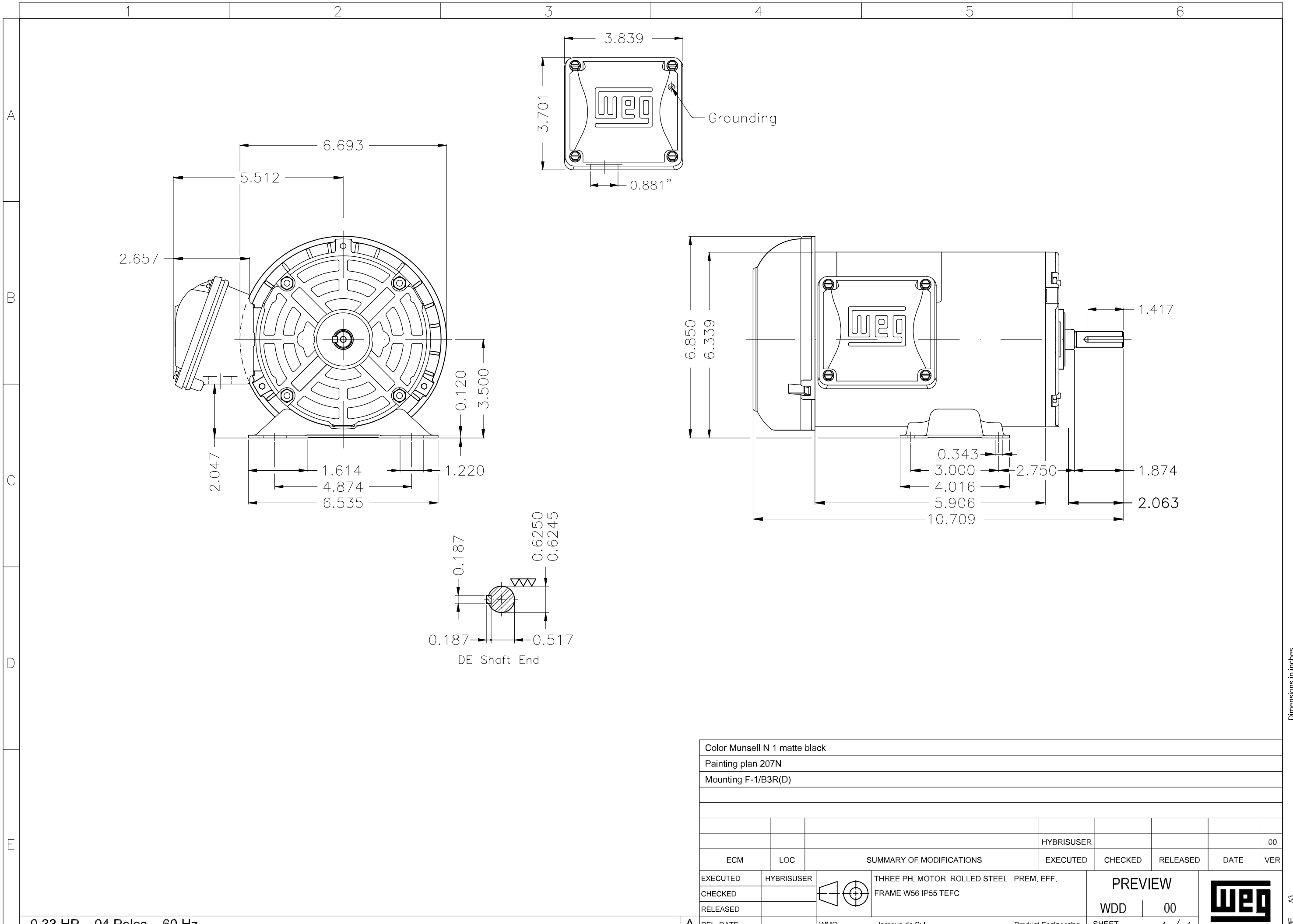


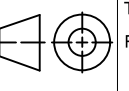
Performance : 575 V 60 Hz 4P

Rated current : 0.499 A
 LRC : 6.2
 Rated torque : 0.138 kgfm
 Locked rotor torque : 260 %
 Breakdown torque : 350 %
 Rated speed : 1740 rpm

Moment of inertia (J) : 0.0015 kgm²
 Duty cycle : Cont.(S1)
 Insulation class : F
 Service factor : 1.15
 Temperature rise : 80 K

Rev.	Changes Summary	Performed	Checked	Date
Performed by			Page 2 / 2	Revision
Checked by				
Date	17/05/2022			



Color Munsell N 1 matte black											
Painting plan 207N											
Mounting F-1/B3R(D)											
						HYBRISUSER	00				
ECM	LOC	SUMMARY OF MODIFICATIONS				EXECUTED	CHECKED	RELEASED	DATE	VER	
EXECUTED	HYBRISUSER	 THREE PH. MOTOR ROLLED STEEL PREM. EFF. FRAME W56 IP55 TEFC				PREVIEW					
CHECKED						WDD		00			
RELEASED						SHEET		1 / 1			
REL. DATE		WMO	Jaragua do Sul			Product Engineering					

0.33 HP 04 Poles 60 Hz

