

# DATA SHEET

## Three Phase Induction Motor - Squirrel Cage



Customer :

Product line : General High Efficiency Three-Phase      Product code : 11994480

Frame	: E143/5TC	Locked rotor time	: 27s (cold) 15s (hot)
Output	: 2 HP (1.5 kW)	Temperature rise	: 80 K
Poles	: 2	Duty cycle	: Cont.(S1)
Frequency	: 60 Hz	Ambient temperature	: -20°C to +40°C
Rated voltage	: 230/460 V	Altitude	: 1000 m.a.s.l.
Rated current	: 5.00/2.50 A	Protection degree	: IP21
L. R. Amperes	: 45.0/22.5 A	Cooling method	: IC01 - ODP
LRC	: 9.0x(Code K)	Mounting	: F-1
No load current	: 2.00/1.00 A	Rotation <sup>1</sup>	: Both (CW and CCW)
Rated speed	: 3430 rpm	Noise level <sup>2</sup>	: 60.0 dB(A)
Slip	: 4.72 %	Starting method	: Direct On Line
Rated torque	: 0.423 kgfm	Approx. weight <sup>3</sup>	: 0.0 kg
Locked rotor torque	: 450 %		
Breakdown torque	: 350 %		
Insulation class	: F		
Service factor	: 1.15		
Moment of inertia (J)	: 0.0025 kgm <sup>2</sup>		
Design	: B		

Output	50%	75%	100%	Foundation loads	
Efficiency (%)	84.0	85.5	85.5	Max. traction	: 42 kgf
Power Factor	0.73	0.83	0.88	Max. compression	: 42 kgf

	Drive end	Non drive end
Bearing type	: 6205 ZZ	: 6204 ZZ
Sealing	: Without Bearing Seal	: Without Bearing Seal
Lubrication interval	: -	: -
Lubricant amount	: -	: -
Lubricant type	: Mobil Polyrex EM	

Notes  
USABLE @208V 5.50A SF 1.00 SFA 5.50A

This revision replaces and cancel the previous one, which must be eliminated.

- (1) Looking the motor from the shaft end.
- (2) Measured at 1m and with tolerance of +3dB(A).
- (3) Approximate weight subject to changes after manufacturing process.
- (4) At 100% of full load.

These are average values based on tests with sinusoidal power supply, subject to the tolerances stipulated in NEMA MG-1.

Rev.	Changes Summary	Performed	Checked	Date
Performed by		Page		Revision
Checked by		1 / 2		
Date	23/11/2024			

# LOAD PERFORMANCE CURVE

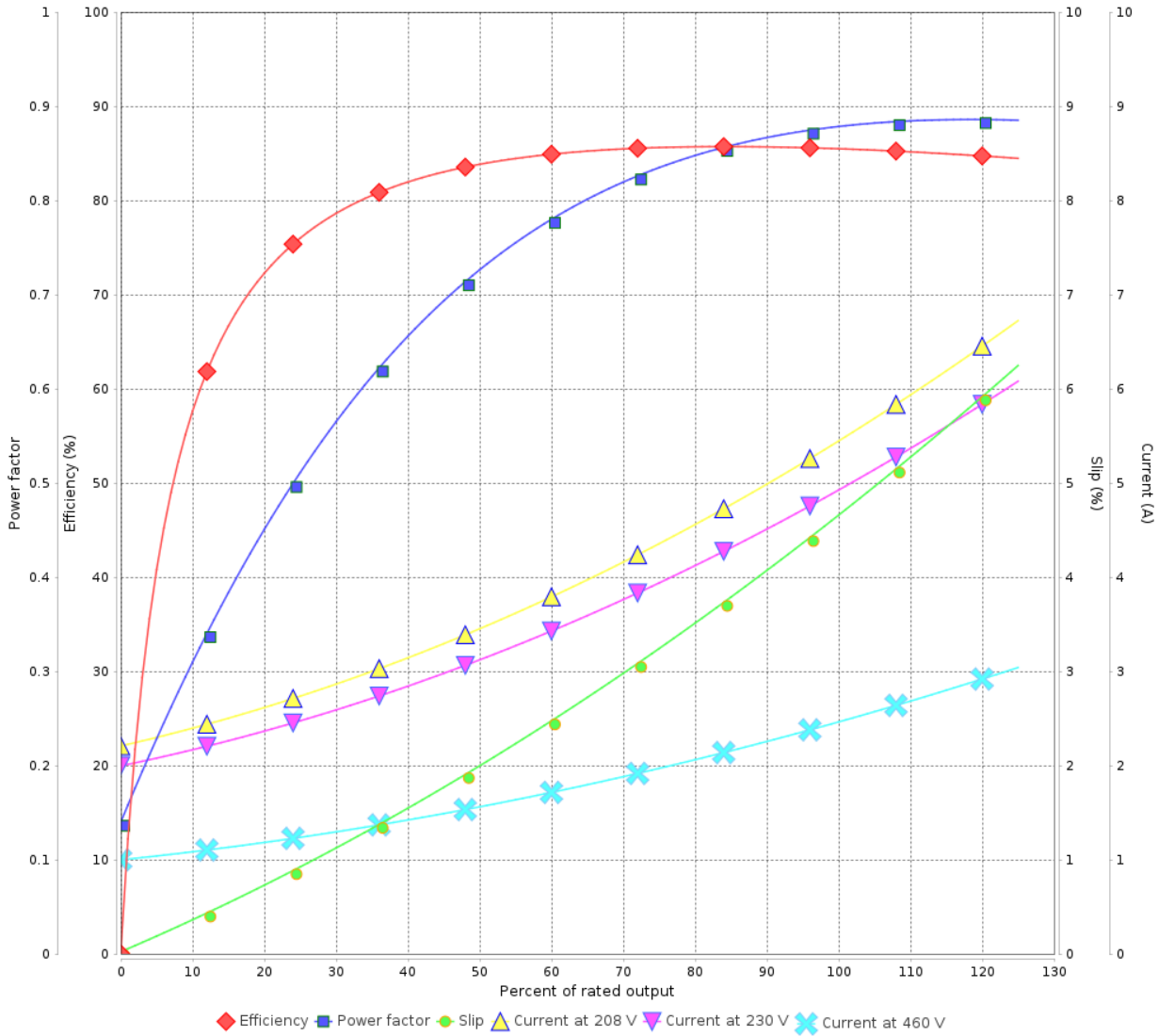
Three Phase Induction Motor - Squirrel Cage



Customer :

Product line : General High Efficiency Three-Phase      Product code : 11994480

LOAD PERFORMANCE CURVE

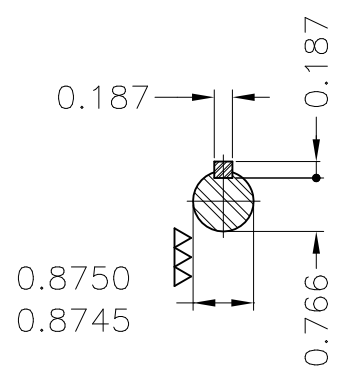
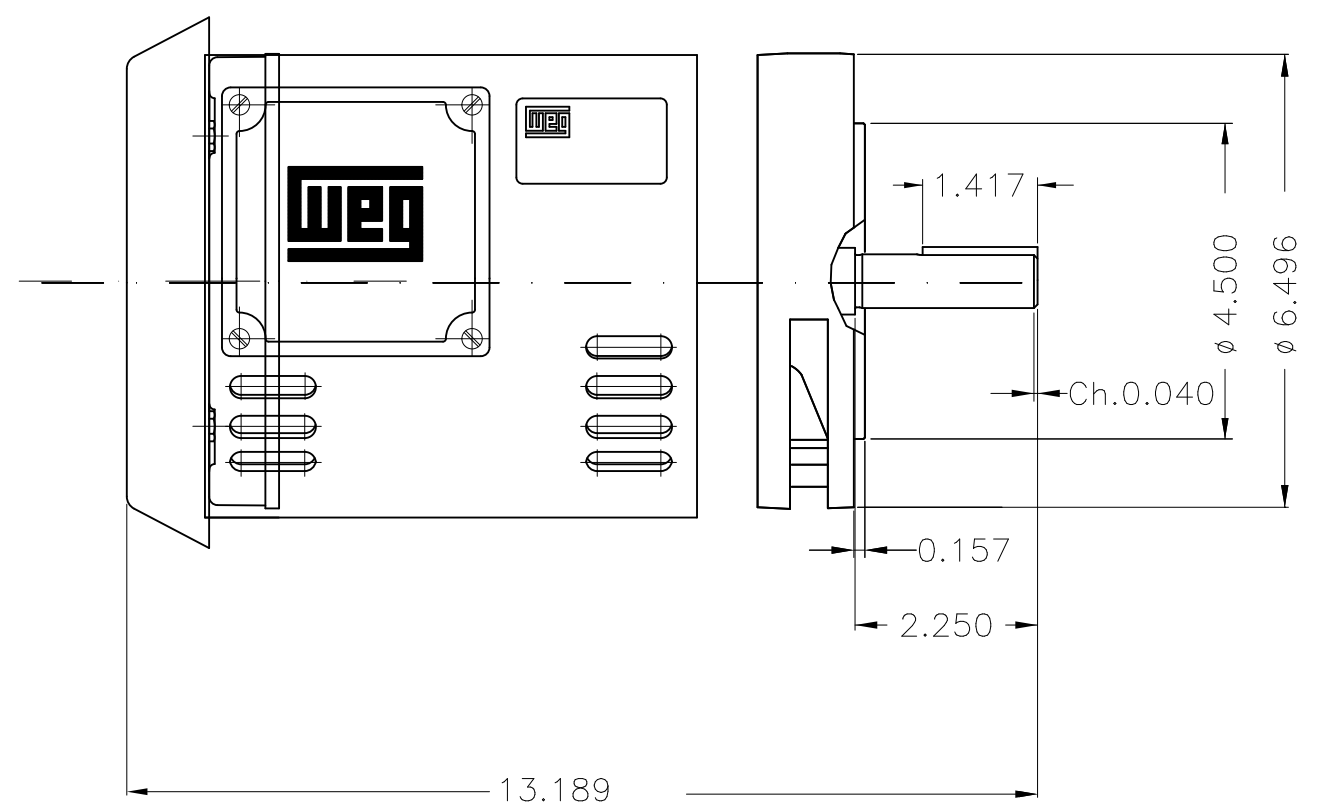
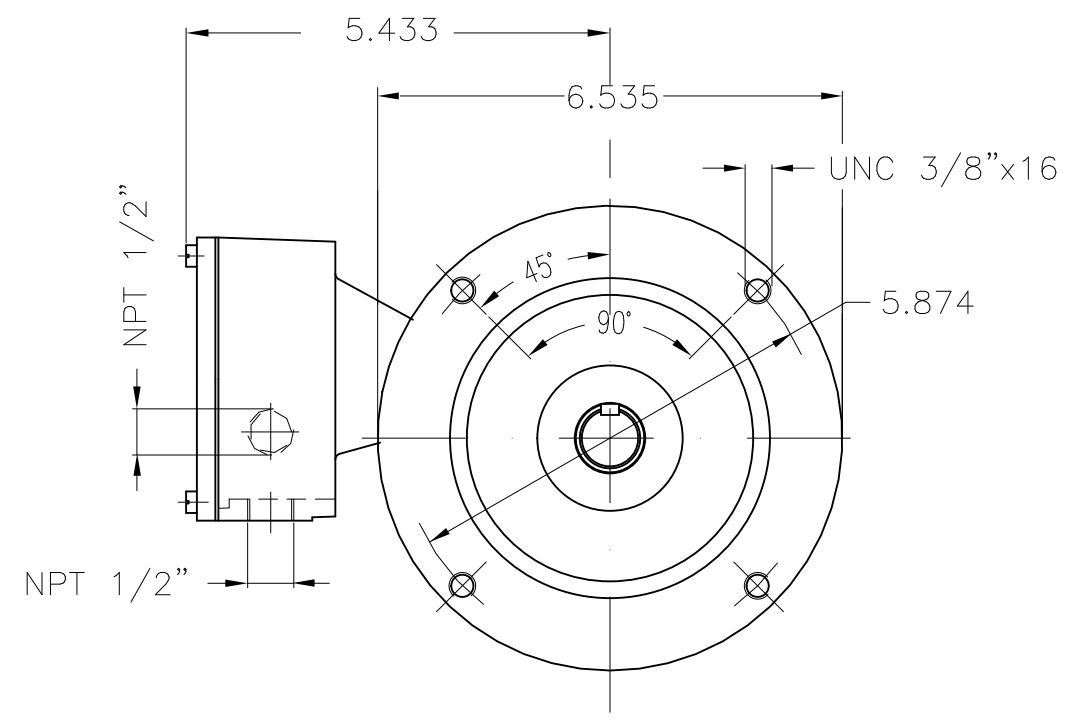


Performance : 230/460 V 60 Hz 2P

Rated current : 5.00/2.50 A  
 LRC : 9.0  
 Rated torque : 0.423 kgfm  
 Locked rotor torque : 450 %  
 Breakdown torque : 350 %  
 Rated speed : 3430 rpm

Moment of inertia (J) : 0.0025 kgm<sup>2</sup>  
 Duty cycle : Cont.(S1)  
 Insulation class : F  
 Service factor :  
 Temperature rise : 80 K  
 Design : B

Rev.	Changes Summary	Performed	Checked	Date
Performed by			Page 2 / 2	Revision
Checked by				
Date	23/11/2024			



Mounting B14R(D)									
ECM	LOC	SUMMARY OF MODIFICATIONS			EXECUTED	CHECKED	RELEASED	DATE	VER
EXECUTED	HYBRISUSER	THREE PH. MOTOR GENERAL HIGH EFF.							00
CHECKED		FRAME E143/5TC IP21 ODP							
RELEASED									
REL. DATE		WMO	Jaragua do Sul	Product Engineering					

2 HP 02 Poles 60 Hz



PREVIEW  
WDD 00  
SHEET 1 / 1