

# DATA SHEET

## Single Phase Induction Motor - Squirrel Cage



Customer :					
Product line : Single-Phase		Product code : 14423132			
Frame : 56	Insulation class : F	Cooling method : IC01 - ODP	Mounting : F-1		
Duty cycle : Cont.(S1)	Ambient temperature : -20°C to +40°C	Rotation <sup>1</sup> : Both (CW and CCW)	Starting method : Direct On Line		
Altitude : 1000 m.a.s.l.	Design : L	Approx. weight <sup>3</sup> : 16.3 kg	Moment of inertia (J) : 0.0027 kgm <sup>2</sup>		
Output [HP]	1.5				
Poles	2				
Frequency [Hz]	60				
Rated voltage [V]	115/208-230				
Rated current [A]	13.3/6.90-6.65				
L. R. Amperes [A]	102/53.1-51.2				
LRC [A]	7.7x(Code J)				
No load current [A]	3.20/1.38-1.60				
Rated speed [RPM]	3500				
Slip [%]	2.78				
Rated torque [kgfm]	0.311				
Locked rotor torque [%]	260				
Breakdown torque [%]	270				
Service factor					
Temperature rise	80 K				
Locked rotor time	18s (cold) 10s (hot)				
Noise level <sup>2</sup>	58.0 dB(A)				
Efficiency (%)	25%				
	50%	73.0			
	75%	79.0			
	100%	81.5			
Power Factor	25%				
	50%	0.88			
	75%	0.89			
	100%	0.89			
Bearing type : 6204 ZZ	Drive end	Non drive end	Foundation loads		
Sealing : Without			Max. traction : 18 kgf		
	Bearing Seal	Bearing Seal	Max. compression : 35 kgf		
Lubrication interval : -	-	-			
Lubricant amount : -	-	-			
Lubricant type : Mobil Polyrex EM					
Notes					
This revision replaces and cancel the previous one, which must be eliminated. (1) Looking the motor from the shaft end. (2) Measured at 1m and with tolerance of +3dB(A). (3) Approximate weight subject to changes after manufacturing process. (4) At 100% of full load.			These are average values based on tests with sinusoidal power supply, subject to the tolerances stipulated in NEMA MG-1.		
Rev.	Changes Summary		Performed	Checked	Date
Performed by					
Checked by					
Date	17/05/2022			Page 1 / 2	Revision

# LOAD PERFORMANCE CURVE

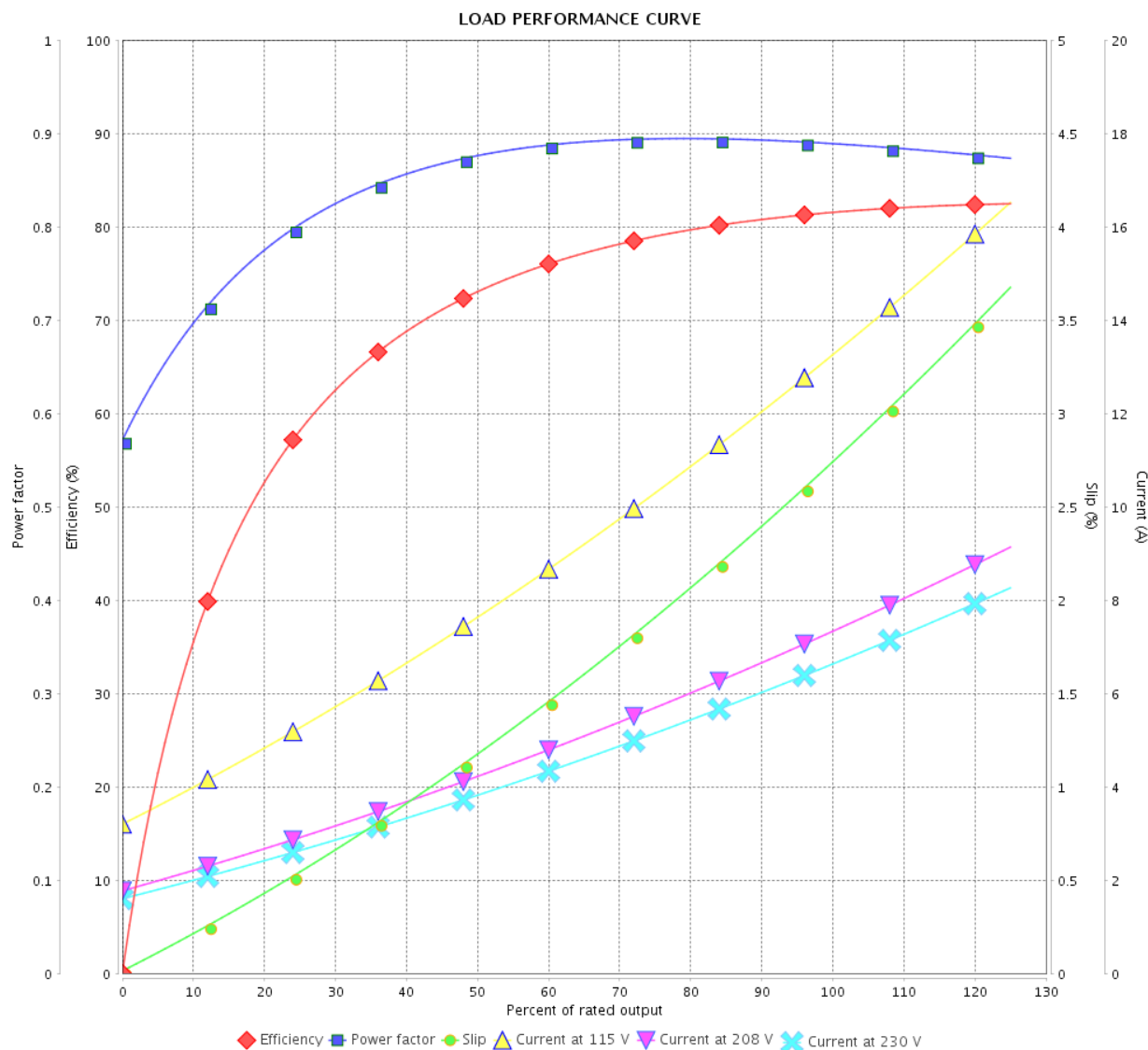
Single Phase Induction Motor - Squirrel Cage



Customer :

Product line : Single-Phase

Product code : 14423132

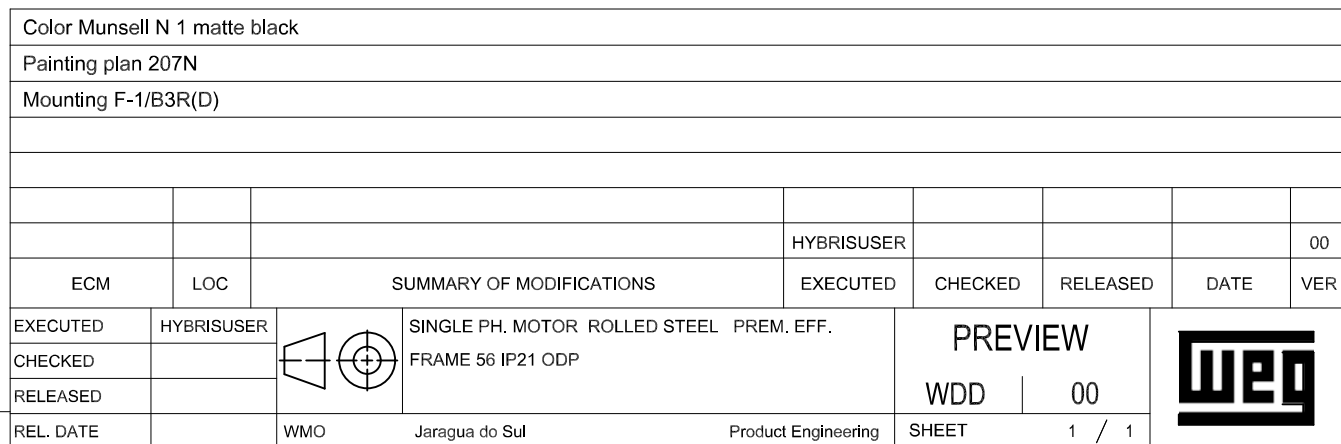
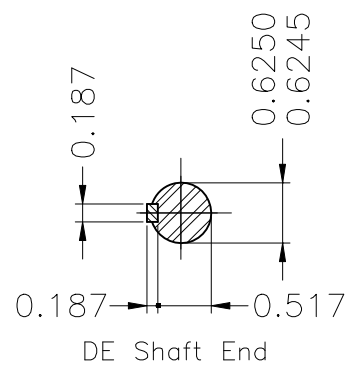


Performance : 115/208-230 V 60 Hz 2P

Rated current : 13.3/6.90-6.65 A  
 LRC : 7.7  
 Rated torque : 0.311 kgfm  
 Locked rotor torque : 260 %  
 Breakdown torque : 270 %  
 Rated speed : 3500 rpm

Moment of inertia (J) : 0.0027 kgm<sup>2</sup>  
 Duty cycle : Cont.(S1)  
 Insulation class : F  
 Service factor :  
 Temperature rise : 80 K  
 Design : L

Rev.	Changes Summary		Performed	Checked	Date
Performed by				Page	Revision
Checked by				2 / 2	
Date					



WEG's property. Forbidden reproduction without previous authorization.