

# DATA SHEET



## Three Phase Induction Motor - Squirrel Cage

Customer :				
Product line		: Jet Pump - C type Three-Phase	Product code : 14937733	
Frame	: W56C	Cooling method	: IC01 - ODP	
Insulation class	: F	Mounting	: F-1	
Duty cycle	: Cont.(S1)	Rotation <sup>1</sup>	: CCW	
Ambient temperature	: -20°C to +40°C	Starting method	: Direct On Line	
Altitude	: 1000 m.a.s.l.	Approx. weight <sup>2</sup>	: 8.8 kg	
		Moment of inertia (J)	: 0.0010 kgm <sup>2</sup>	
Output [HP]	1	1	1	
Poles	2	2	2	
Frequency [Hz]	60	50	50	
Rated voltage [V]	230/460	190/380	220/415	
Rated current [A]	3.26/1.63	3.60/1.80	3.40/1.80	
L. R. Amperes [A]	27.1/13.5	25.2/12.6	24.8/13.1	
LRC [A]	8.3x(Code M)	7.0x(Code K)	7.3x(Code L)	
No load current [A]	2.00/1.00	2.00/1.00	2.26/1.20	
Rated speed [RPM]	3450	2820	2840	
Slip [%]	4.17	6.00	5.33	
Rated torque [kgfm]	0.210	0.257	0.256	
Locked rotor torque [%]	400	340	380	
Breakdown torque [%]	409	320	360	
Service factor		1.40	1.40	
Temperature rise	80 K	80 K	80 K	
Locked rotor time	23s (cold) 13s (hot)	23s (cold) 13s (hot)	19s (cold) 11s (hot)	
Noise level <sup>2</sup>	62.0 dB(A)	60.0 dB(A)	60.0 dB(A)	
Efficiency (%)	25%			
	50%	70.0	73.0	71.0
	75%	75.5	76.0	75.0
	100%	77.0	77.0	77.0
Power Factor	25%			
	50%	0.55	0.61	0.54
	75%	0.68	0.75	0.68
	100%	0.75	0.82	0.78
Bearing type	: <u>Drive end</u> 6203 2RS <u>Non drive end</u> 6202 2RS	Foundation loads		
Sealing	: Without Bearing Seal Without Bearing Seal	Max. traction	: 25 kgf	
		Max. compression	: 34 kgf	
Lubrication interval	: -			
Lubricant amount	: -			
Lubricant type	: Mobil Polyrex EM			
Notes USABLE @208V 3.60A SF 1.00 SFA 3.60A				
This revision replaces and cancel the previous one, which must be eliminated. (1) Looking the motor from the shaft end. (2) Measured at 1m and with tolerance of +3dB(A). (3) Approximate weight subject to changes after manufacturing process. (4) At 100% of full load.		These are average values based on tests with sinusoidal power supply, subject to the tolerances stipulated in NEMA MG-1.		
Rev.	Changes Summary		Performed	Checked
Performed by				
Checked by			Page	Revision
Date	17/05/2022		1 / 4	

# LOAD PERFORMANCE CURVE

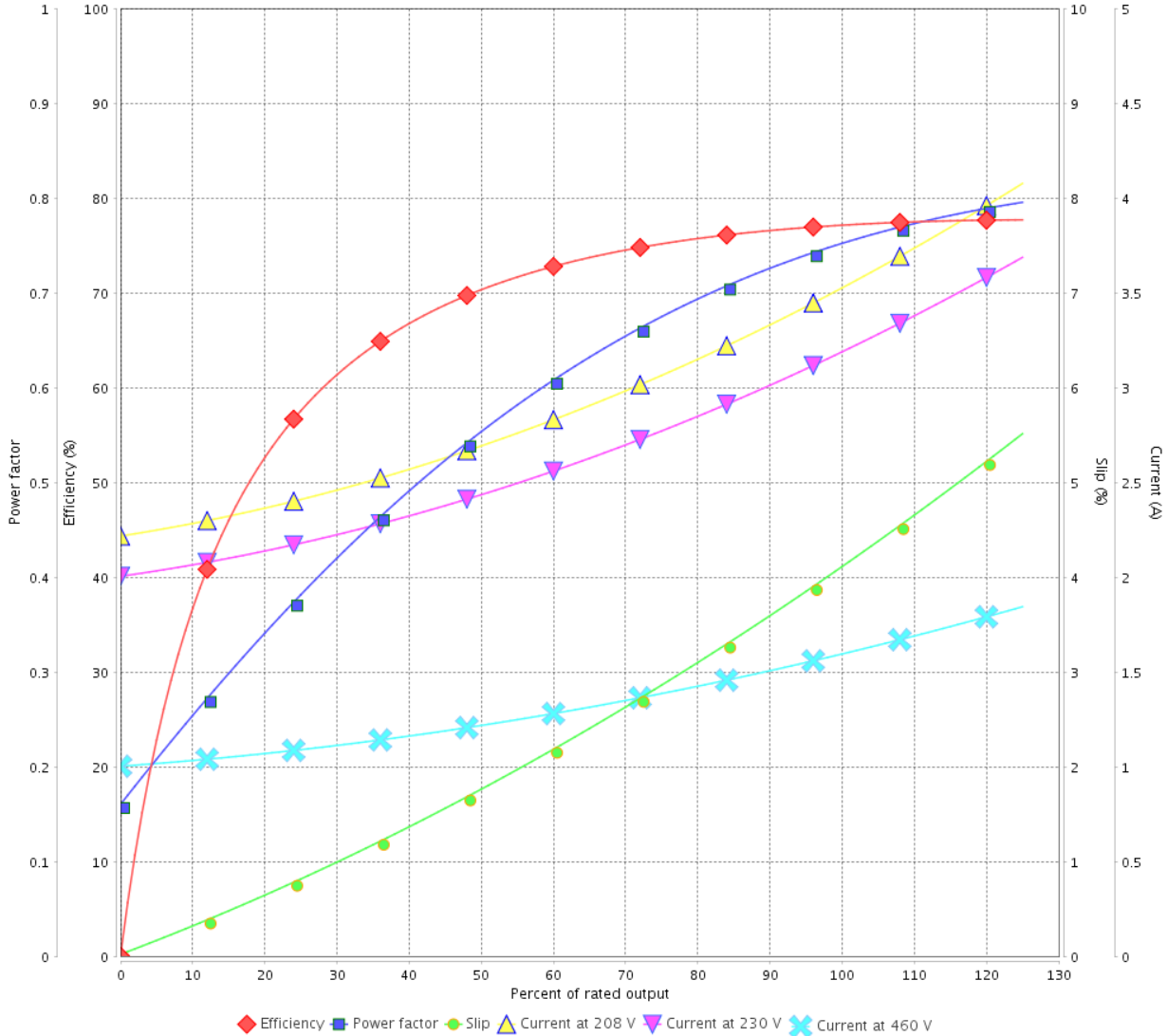
Three Phase Induction Motor - Squirrel Cage



Customer :

Product line : Jet Pump - C type Three-Phase      Product code : 14937733

LOAD PERFORMANCE CURVE



Performance : 230/460 V 60 Hz 2P

Rated current : 3.26/1.63 A  
 LRC : 8.3  
 Rated torque : 0.210 kgfm  
 Locked rotor torque : 400 %  
 Breakdown torque : 409 %  
 Rated speed : 3450 rpm

Moment of inertia (J) : 0.0010 kgm<sup>2</sup>  
 Duty cycle : Cont.(S1)  
 Insulation class : F  
 Service factor :  
 Temperature rise : 80 K

Rev.	Changes Summary	Performed	Checked	Date
Performed by			Page	Revision
Checked by				
Date				

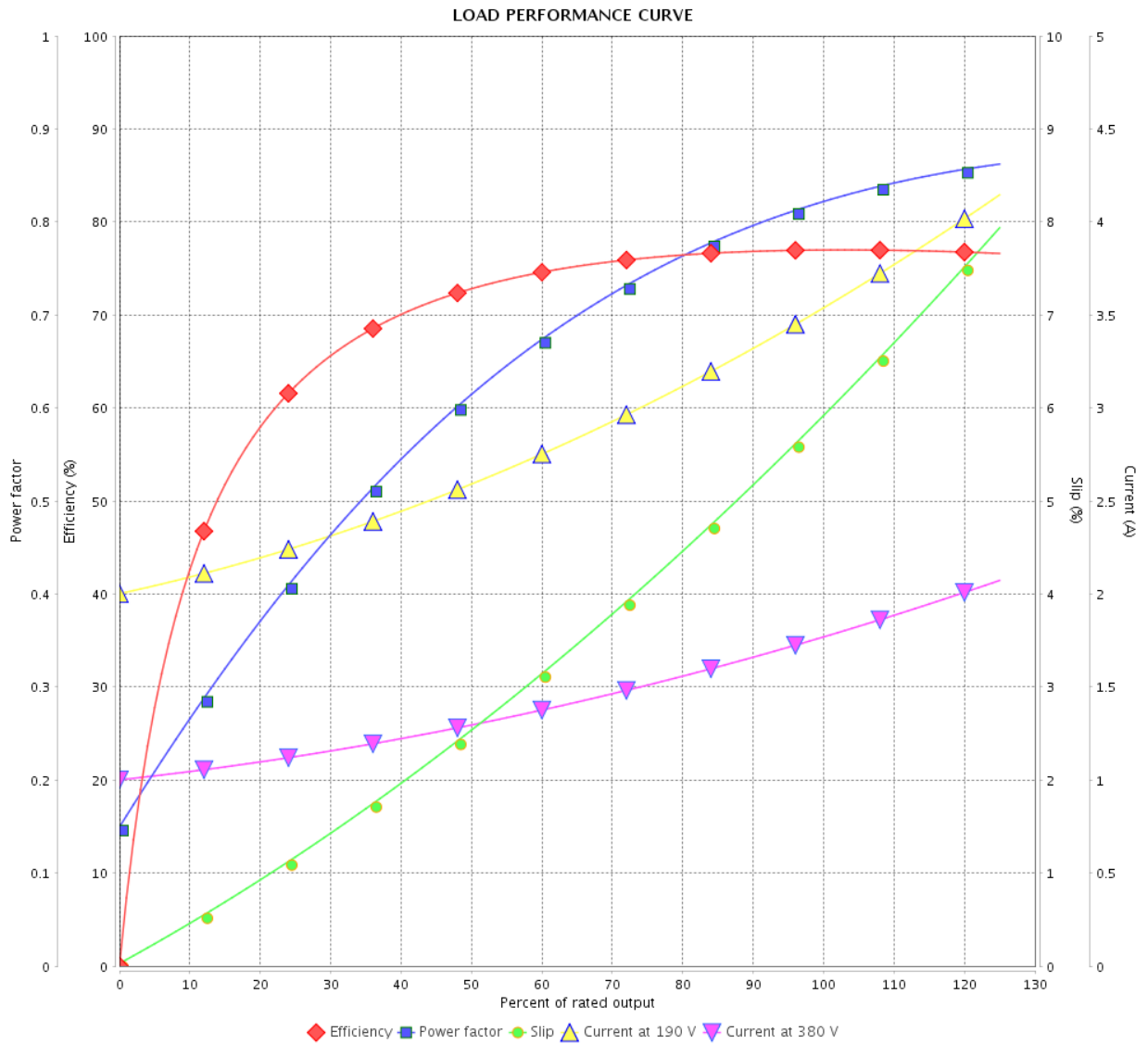
# LOAD PERFORMANCE CURVE

Three Phase Induction Motor - Squirrel Cage



Customer :

Product line : Jet Pump - C type Three-Phase Product code : 14937733



Performance : 190/380 V 50 Hz 2P

Rated current : 3.60/1.80 A  
 LRC : 7.0  
 Rated torque : 0.257 kgfm  
 Locked rotor torque : 340 %  
 Breakdown torque : 320 %  
 Rated speed : 2820 rpm

Moment of inertia (J) : 0.0010 kgm<sup>2</sup>  
 Duty cycle : Cont.(S1)  
 Insulation class : F  
 Service factor : 1.40  
 Temperature rise : 80 K

Rev.	Changes Summary	Performed	Checked	Date
Performed by			Page	Revision
Checked by			3 / 4	
Date	17/05/2022			

# LOAD PERFORMANCE CURVE

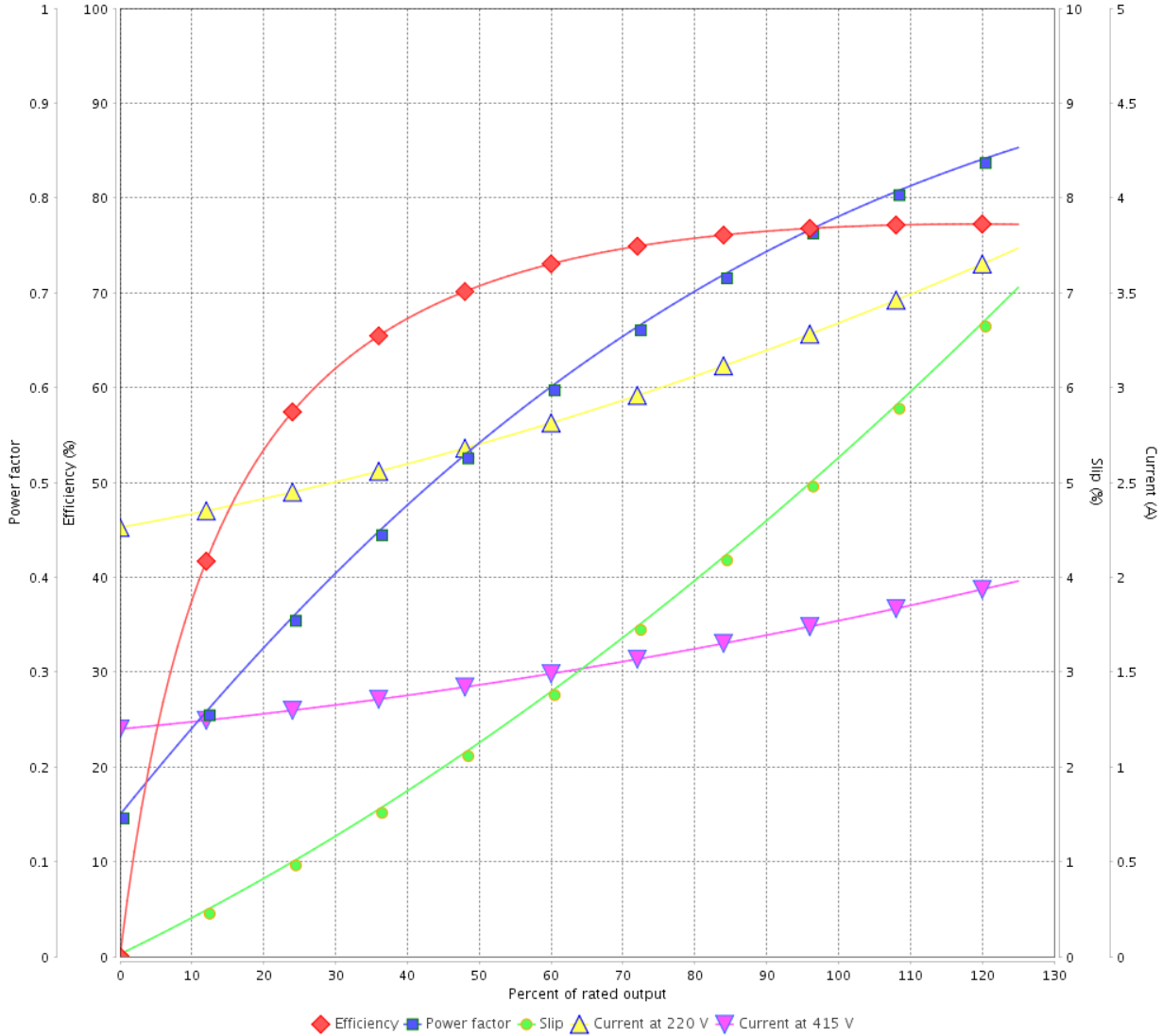
Three Phase Induction Motor - Squirrel Cage



Customer :

Product line : Jet Pump - C type Three-Phase      Product code : 14937733

LOAD PERFORMANCE CURVE

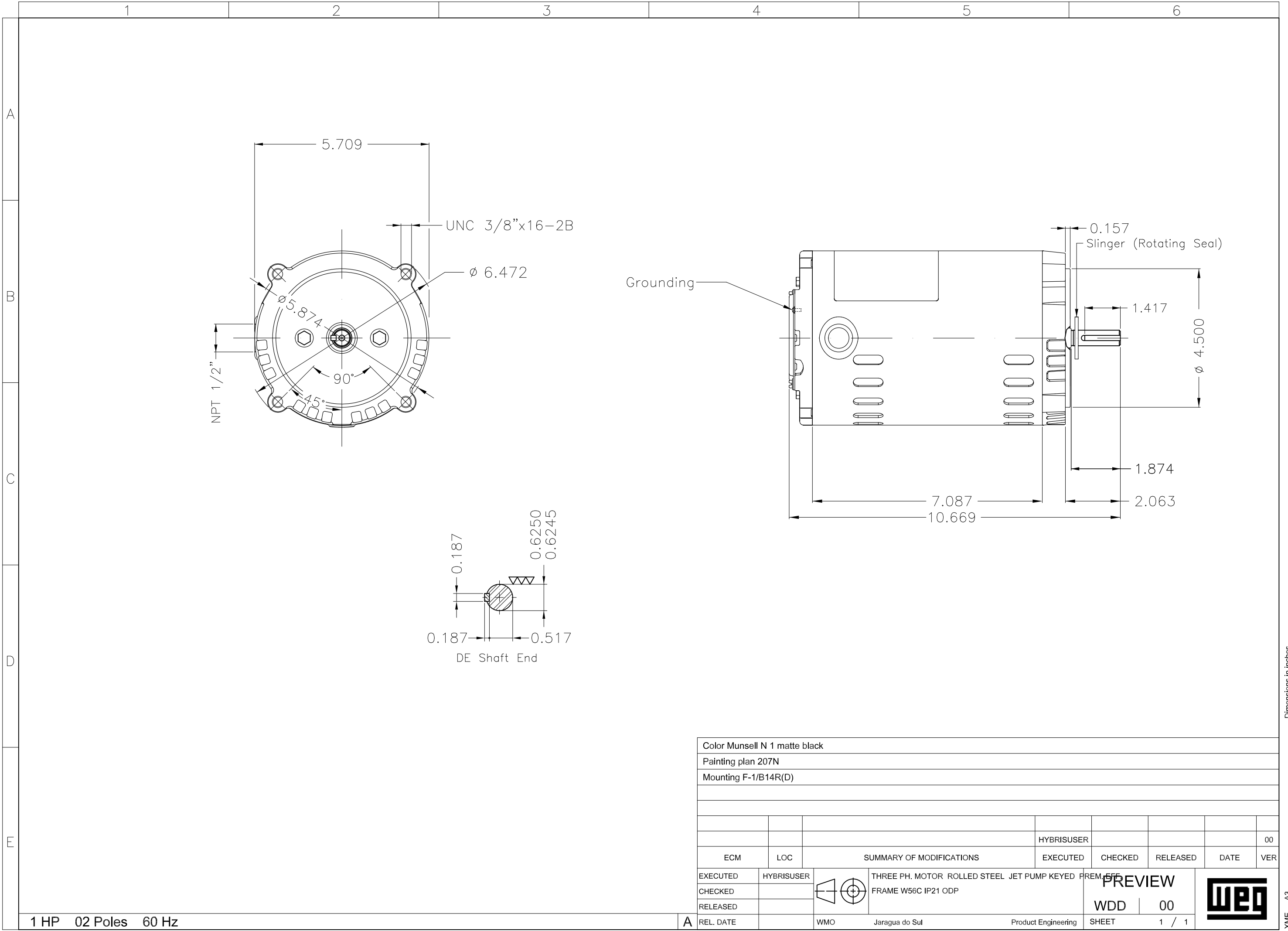


Performance : 220/415 V 50 Hz 2P

Rated current : 3.40/1.80 A  
 LRC : 7.3  
 Rated torque : 0.256 kgfm  
 Locked rotor torque : 380 %  
 Breakdown torque : 360 %  
 Rated speed : 2840 rpm

Moment of inertia (J) : 0.0010 kgm<sup>2</sup>  
 Duty cycle : Cont.(S1)  
 Insulation class : F  
 Service factor : 1.40  
 Temperature rise : 80 K

Rev.	Changes Summary	Performed	Checked	Date
Performed by			Page 4 / 4	Revision
Checked by				
Date	17/05/2022			



Color Munsell N 1 matte black						
Painting plan 207N						
Mounting F-1/B14R(D)						
					HYBRISUSER	00
ECM	LOC	SUMMARY OF MODIFICATIONS	EXECUTED	CHECKED	RELEASED	DATE VER
EXECUTED	HYBRISUSER	THREE PH. MOTOR ROLLED STEEL JET PUMP KEYED PREM 555				
CHECKED		FRAME W56C IP21 ODP				
RELEASED						
REL. DATE		WMO Jaragua do Sul	Product Engineering	PREVIEW	WDD 00	
				SHEET	1 / 1	

1 HP 02 Poles 60 Hz