

DATA SHEET

Three Phase Induction Motor - Squirrel Cage



Customer :

Product line : W21 Explosion Proof NEMA Premium Efficiency Three-Phase Product code : 14293714

Frame	: 143/5TC	Locked rotor time	: 45s (cold) 25s (hot)
Output	: 1 HP (0.75 kW)	Temperature rise	: 80 K
Poles	: 6	Duty cycle	: Cont.(S1)
Frequency	: 60 Hz	Ambient temperature	: -20°C to +40°C
Rated voltage	: 575 V	Altitude	: 1000 m.a.s.l.
Rated current	: 1.45 A	Protection degree	: IP55
L. R. Amperes	: 9.57 A	Cooling method	: IC411 - TEFC
LRC	: 6.6x(Code L)	Mounting	: F-1
No load current	: 1.00 A	Rotation ¹	: Both (CW and CCW)
Rated speed	: 1150 rpm	Noise level ²	: 49.0 dB(A)
Slip	: 4.17 %	Starting method	: Direct On Line
Rated torque	: 0.631 kgfm	Approx. weight ³	: 33.6 kg
Locked rotor torque	: 240 %		
Breakdown torque	: 270 %		
Insulation class	: F		
Service factor	: 1.15		
Moment of inertia (J)	: 0.0055 kgm ²		
Design	: B		

Output	25%	50%	75%	100%	Foundation loads	
Efficiency (%)	0.000	78.5	81.0	82.5	Max. traction	: 31 kgf
Power Factor	0.00	0.41	0.53	0.63	Max. compression	: 65 kgf

		Drive end	Non drive end
Bearing type	:	6205 2RS	6204 2RS
Sealing	:	Oil Seal	Lip Seal
Lubrication interval	:	0 h	0 h
Lubricant amount	:	0 g	0 g
Lubricant type	:	Mobil Polyrex EM	

Notes

This revision replaces and cancel the previous one, which must be eliminated.

- (1) Looking the motor from the shaft end.
- (2) Measured at 1m and with tolerance of +3dB(A).
- (3) Approximate weight subject to changes after manufacturing process.
- (4) At 100% of full load.

These are average values based on tests with sinusoidal power supply, subject to the tolerances stipulated in NEMA MG-1.

Rev.	Changes Summary	Performed	Checked	Date
Performed by		Page Revision 1 / 3		
Checked by				
Date	28/10/2024			

DATA SHEET

Three Phase Induction Motor - Squirrel Cage



Customer :

Thermal protection

ID	Application	Type	Quantity	Sensing Temperature
1	Winding	Thermostat - 2 wires	1 x Phase	155 °C

Rev.	Changes Summary		Performed	Checked	Date
Performed by				Page 2 / 3Revision	
Checked by					
Date	28/10/2024				

LOAD PERFORMANCE CURVE

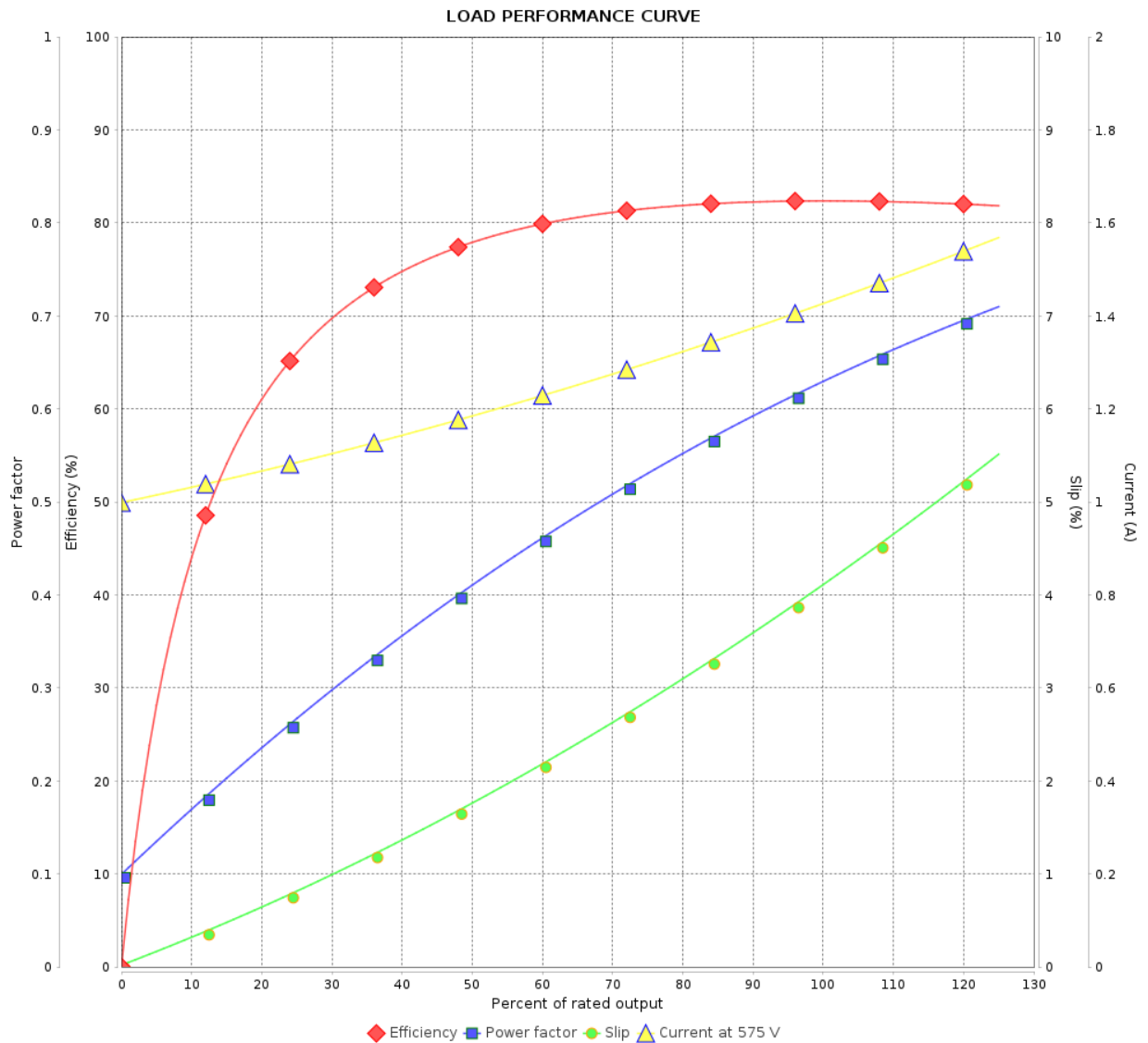
Three Phase Induction Motor - Squirrel Cage



Customer :

Product line : W21 Explosion Proof NEMA
Premium Efficiency Three-Phase

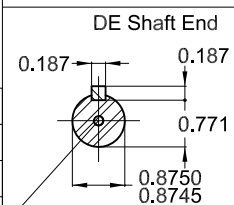
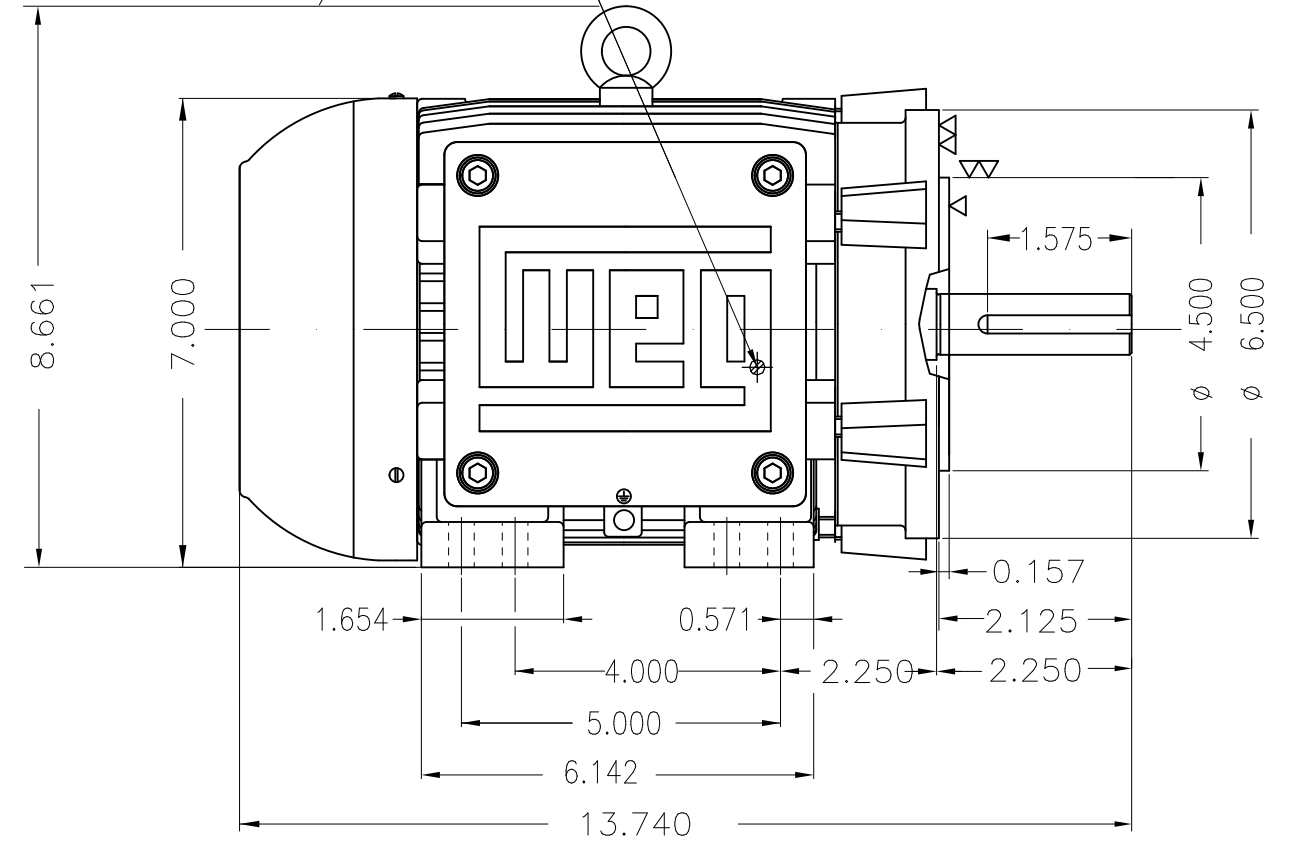
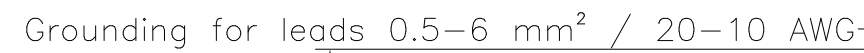
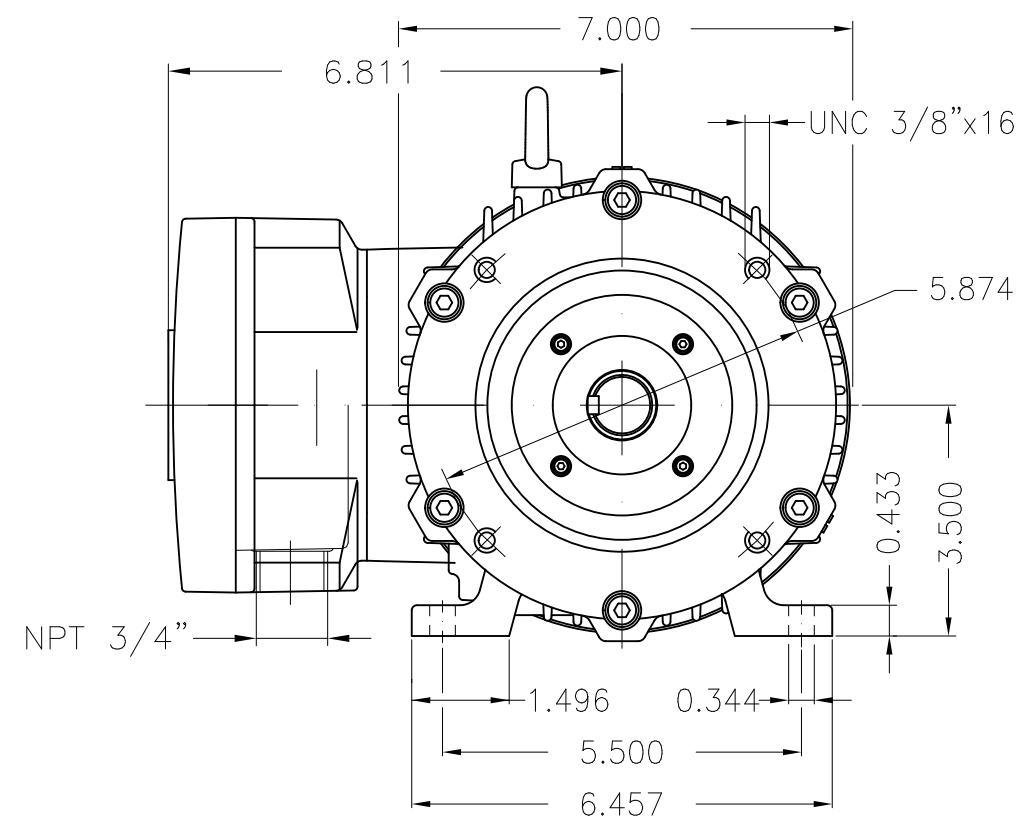
Product code : 14293714





Performance : 575 V 60 Hz 6P

Rated current	: 1.45 A	Moment of inertia (J)	: 0.0055 kgm ²
LRC	: 6.6	Duty cycle	: Cont.(S1)
Rated torque	: 0.631 kgfm	Insulation class	: F
Locked rotor torque	: 240 %	Service factor	: 1.15
Breakdown torque	: 270 %	Temperature rise	: 80 K
Rated speed	: 1150 rpm	Design	: B

Rev.	Changes Summary	Performed	Checked	Date
Performed by				
Checked by				
Date	28/10/2024		Page 3 / 3	Revision



Color RAL 5009
Painting plan 202P
Mounting NEMA F-1
Mounting B34R(D)

1 HP 06 Poles 60 Hz										A
							HYBRISUSER			00
ECM	LOC	SUMMARY OF MODIFICATIONS					EXECUTED	CHECKED	RELEASED	DATE
EXECUTED	HYBRISUSER		THREE PH. MOTOR EXPLOSION PROOF NEMA PREM. EFF. FRAME 143/5TC IP55 TEFC					<div> <div>PREVIEW</div> <div>WDD 00</div> </div>		
CHECKED										
RELEASED										
REL. DATE		WMO	Jaragua do Sul		Product Engineering		SHEET	1 / 1		