

# DATA SHEET

## Three Phase Induction Motor - Squirrel Cage



Customer : V.J. PAMENSKY CANADA INC.

Product line : W01 - TEFC - Nema Premium Efficiency JM Product code : 14329644

Frame	: 254/6JM	Locked rotor time	: 14 s (hot) 25 s (cold)
Output	: 15 HP (11 kW)	Temperature rise	: 80 K
Poles	: 2	Duty cycle	: S1
Frequency	: 60 Hz	Ambient temperature	: -20 °C to +40 °C
Rated voltage	: 575 V	Altitude	: 3280 ft
Rated current	: 13.9 A	Protection degree	: IP55
L. R. Amperes	: 94.7 A	Cooling method	: IC411 - TEFC
LRC	: 6.8	Mounting	: F-1/B34R(D)
No load current	: 4.16 A	Rotation <sup>1</sup>	: Both
Rated speed	: 3525 rpm	Noise level <sup>2</sup>	: 75.0 dB(A)
Slip	: 2.08 %	Vibration class	: A
Rated torque	: 22.1 ft.lb	Starting method	: Direct On Line
Locked rotor torque	: 200 %	Approx. weight <sup>3</sup>	: 175 lb
Pull up torque	: 150 %	Painting plan	: 207N
Breakdown torque	: 300 %	Color	: MUNSELL N 1 - MATTE
Insulation class	: F	Design	: B
Service factor	: 1.15		
Moment of inertia (J)	: 0.8709 sq.ft.lb		

Output	50%	75%	100%	Load type	: -
Efficiency (%)	89.5	91.0	91.0	Load torque	: -
Power Factor	0.73	0.83	0.87	Load inertia (J=GD <sup>2</sup> /4)	: -

Bearing type #1	Drive end 6309-Z-C3	Non drive end 6208-Z-C3	Foundation loads	
Bearing type #2	-	-	Max. traction	:
Lubrication interval	15797 h	20000 h	Max. compression	:
Lubricant amount #1	13 g	8 g		
Lubricant amount #2	-	-		
Lubricant type	MOBIL POLYREX EM			

Notes  
See notes on page 2.

Losses at normative operating points (speed;torque), in percentage of rated output power

P1 (0,9;1,0)	P2 (0,5;1,0)	P3 (0,25;1,0)	P4 (0,9;0,5)	P5 (0,5;0,5)	P6 (0,5;0,25)	P7 (0,25;0,25)
10.0	8.2	7.4	5.5	3.5	2.5	1.7

This revision replaces and cancel the previous one, which must be eliminated.  
(1) Looking the motor from the shaft end.  
(2) Measured at 1m and with tolerance of +3dB(A).  
(3) Approximate weight, subject to be changed after manufacturing process.

These are average values based on tests with sinusoidal power supply, subject to the tolerances stipulated in NEMA MG 1-12.

Rev.	Changes Summary	Rev.	Checked	Date
Performed by	farazq	1865176614		
Checked by	AUTOMATICO	Page	Rev.	
Date	24/06/2026	1 / 2	0	

# DATA SHEET

## Three Phase Induction Motor - Squirrel Cage



Customer : V.J. PAMENSKY CANADA INC.

Product line : W01 - TEFC - Nema Premium Efficiency JM Product code : 14329644

Thermal protection ID	Application	Type	Quantity	Sensing Temperature
-----------------------	-------------	------	----------	---------------------

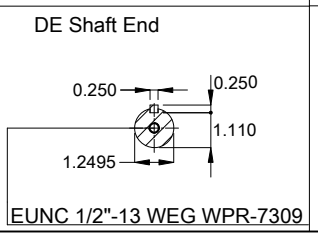
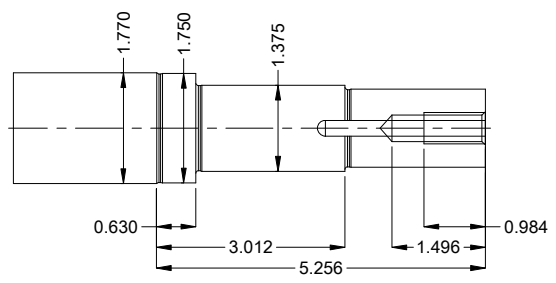
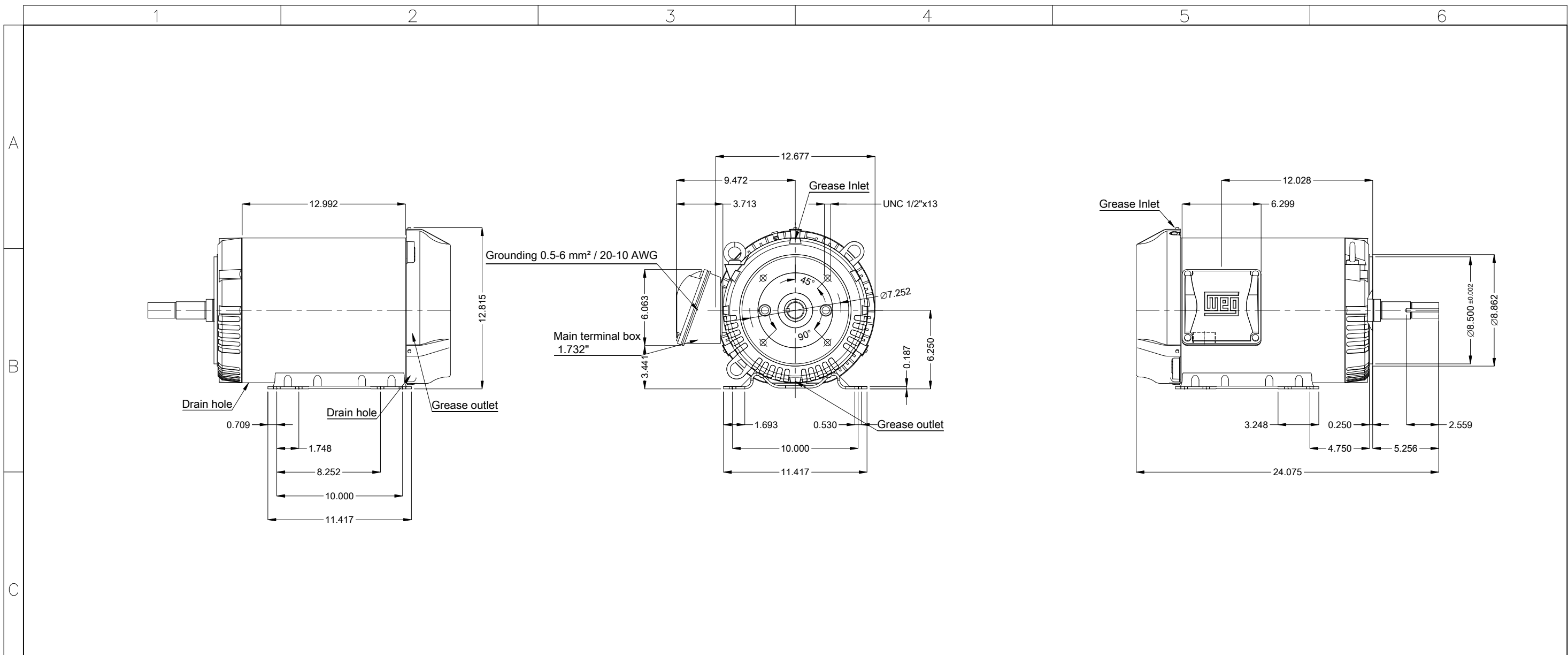
Notes

Standards	Specification : MG1 - Part 10	Vibration : MG1 - Part 7
	Test : MG1 - Part 12	Tolerance : MG1 - Part 12
	Noise : MG1 - Part 9	

This revision replaces and cancel the previous one, which must be eliminated.  
(1) Looking the motor from the shaft end.  
(2) Measured at 1m and with tolerance of +3dB(A).  
(3) Approximate weight, subject to be changed after manufacturing process.

These are average values based on tests with sinusoidal power supply, subject to the tolerances stipulated in NEMA MG 1-12.

Rev.	Changes Summary	Rev.	Checked	Date
Performed by	farazq	1865176614		
Checked by	AUTOMATICO	Page	Rev.	
Date	24/06/2026	2 / 2	0	



Internal AEGIS ground ring on the DE  
 Color Munsell N 1 matte black  
 Painting plan 207N  
 Mounting MARKET F-1/B34R(D)  
 Mounting B34D

15 HP 02 Poles 60 Hz										A	
Scale 1 : 8											
HYBRISUSER										00	
ECM	LOC	SUMMARY OF MODIFICATIONS					EXECUTED	CHECKED	RELEASED	DATE	VER
EXECUTED	HYBRISUSER	THREE PH. MOTOR ROLLED STEEL JM NEMA PREM. EFF.					EXECUTED	CHECKED	RELEASED	DATE	VER
CHECKED		FRAME 254/6JM IP55 TEFC					EXECUTED	CHECKED	RELEASED	DATE	VER
RELEASED							EXECUTED	CHECKED	RELEASED	DATE	VER
REL. DATE							EXECUTED	CHECKED	RELEASED	DATE	VER
						PREVIEW		WDD 00		SHEET 1 / 1	

Dimensions in inches

A3

