

DATA SHEET

Three Phase Induction Motor - Squirrel Cage



Customer :				
Product line		: Jet Pump - J type Three-Phase	Product code :	14317336
Frame	: W56J	Cooling method	: IC01 - ODP	
Insulation class	: F	Mounting	: F-1	
Duty cycle	: Cont.(S1)	Rotation ¹	: CCW	
Ambient temperature	: -20°C to +40°C	Starting method	: Direct On Line	
Altitude	: 1000 m.a.s.l.	Approx. weight ³	: 11.5 kg	
Design	: A	Moment of inertia (J)	: 0.0014 kgm ²	
Output [HP]	1.5	1.5	1.5	
Poles	2	2	2	
Frequency [Hz]	60	50	50	
Rated voltage [V]	230/460	190/380	220/415	
Rated current [A]	4.22/2.11	4.86/2.43	4.51/2.39	
L. R. Amperes [A]	37.1/18.6	38.4/19.2	38.3/20.3	
LRC [A]	8.8x(Code L)	7.9x(Code K)	8.5x(Code L)	
No load current [A]	2.40/1.20	2.40/1.20	2.45/1.30	
Rated speed [RPM]	3450	2815	2835	
Slip [%]	4.17	6.17	5.50	
Rated torque [kgfm]	0.316	0.387	0.384	
Locked rotor torque [%]	400	390	440	
Breakdown torque [%]	430	310	350	
Service factor		1.15	1.15	
Temperature rise	80 K	80 K	80 K	
Locked rotor time	23s (cold) 13s (hot)	18s (cold) 10s (hot)	16s (cold) 9s (hot)	
Noise level ²	62.0 dB(A)	60.0 dB(A)	60.0 dB(A)	
Efficiency (%)	25%			
	50%	78.5	80.0	79.0
	75%	82.5	81.0	81.0
	100%	84.0	82.0	82.0
Power Factor	25%			
	50%	0.59	0.65	0.59
	75%	0.72	0.77	0.73
	100%	0.78	0.84	0.81
Bearing type	: <u>Drive end</u> 6203 2RS <u>Non drive end</u> 6202 2RS	Foundation loads		
Sealing	: Without Bearing Seal Without Bearing Seal	Max. traction	: 37 kgf	
		Max. compression	: 49 kgf	
Lubrication interval	: - -			
Lubricant amount	: - -			
Lubricant type	: Mobil Polyrex EM			
Notes USABLE @208V 4.67A SF 1.00 SFA 4.67A				
This revision replaces and cancel the previous one, which must be eliminated. (1) Looking the motor from the shaft end. (2) Measured at 1m and with tolerance of +3dB(A). (3) Approximate weight subject to changes after manufacturing process. (4) At 100% of full load.		These are average values based on tests with sinusoidal power supply, subject to the tolerances stipulated in NEMA MG-1.		
Rev.	Changes Summary		Performed	Checked
Performed by			Page 1 / 4	Revision
Checked by				
Date	17/05/2022			

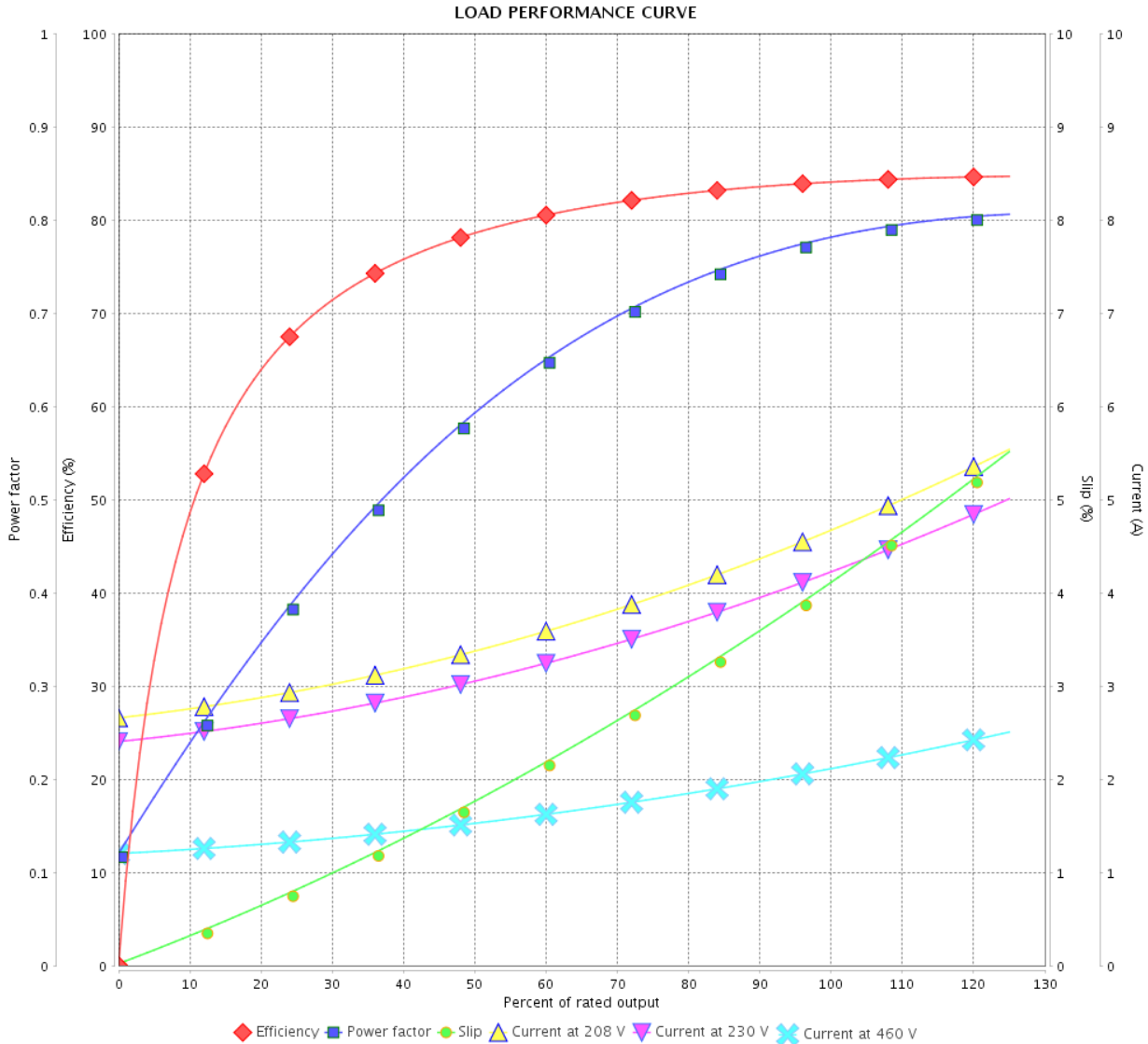
LOAD PERFORMANCE CURVE

Three Phase Induction Motor - Squirrel Cage



Customer :

Product line : Jet Pump - J type Three-Phase Product code : 14317336



Performance : 230/460 V 60 Hz 2P

Rated current : 4.22/2.11 A
 LRC : 8.8
 Rated torque : 0.316 kgfm
 Locked rotor torque : 400 %
 Breakdown torque : 430 %
 Rated speed : 3450 rpm

Moment of inertia (J) : 0.0014 kgm²
 Duty cycle : Cont.(S1)
 Insulation class : F
 Service factor :
 Temperature rise : 80 K
 Design : A

Rev.	Changes Summary	Performed	Checked	Date
Performed by			Page 2 / 4	Revision
Checked by				
Date	17/05/2022			

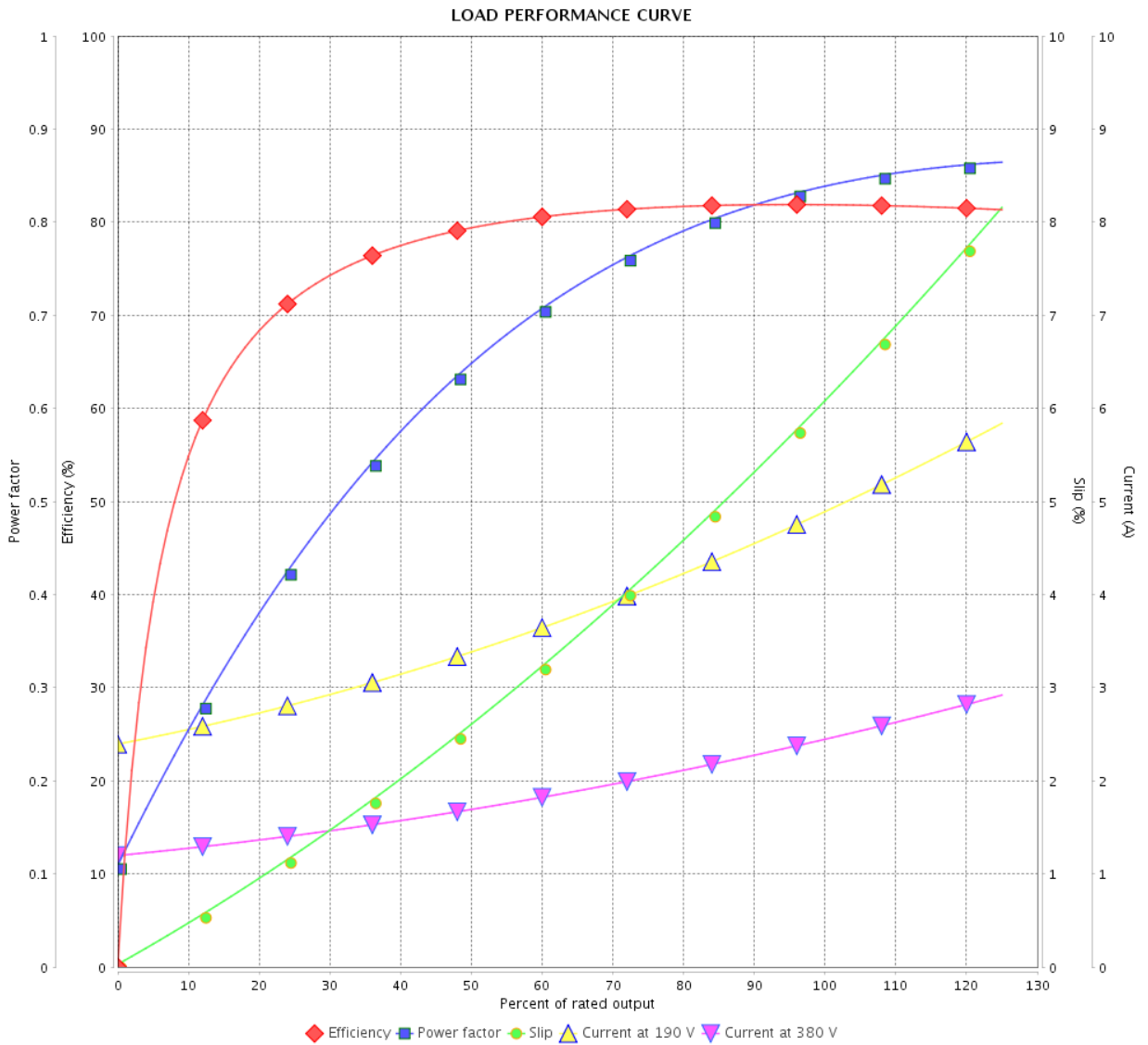
LOAD PERFORMANCE CURVE

Three Phase Induction Motor - Squirrel Cage



Customer : _____

Product line : Jet Pump - J type Three-Phase Product code : 14317336



Performance : 190/380 V 50 Hz 2P

Rated current : 4.86/2.43 A
 LRC : 7.9
 Rated torque : 0.387 kgfm
 Locked rotor torque : 390 %
 Breakdown torque : 310 %
 Rated speed : 2815 rpm

Moment of inertia (J) : 0.0014 kgm²
 Duty cycle : Cont.(S1)
 Insulation class : F
 Service factor : 1.15
 Temperature rise : 80 K
 Design : A

Rev.	Changes Summary	Performed	Checked	Date
Performed by			Page 3 / 4	Revision
Checked by				
Date	17/05/2022			

LOAD PERFORMANCE CURVE

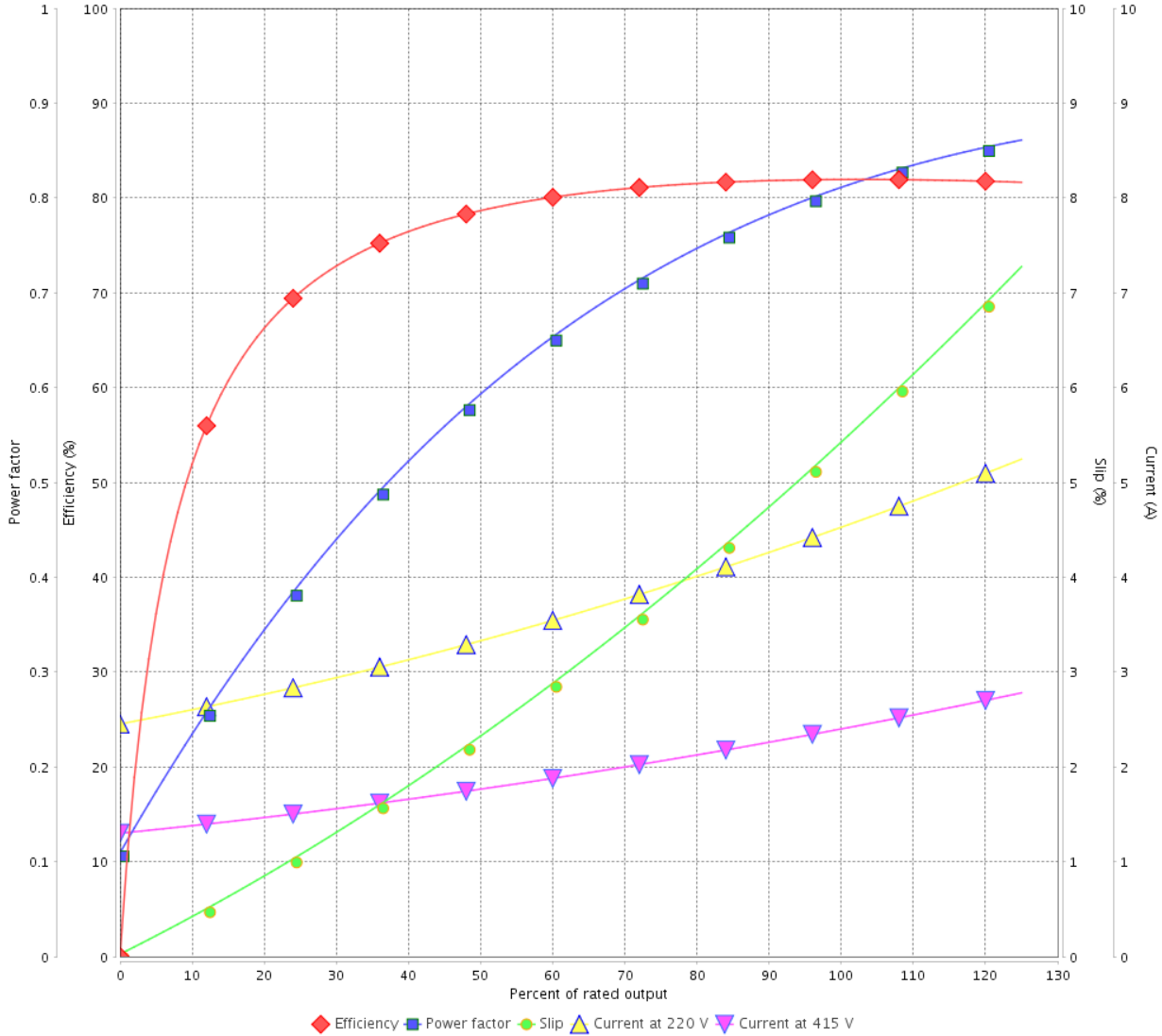
Three Phase Induction Motor - Squirrel Cage



Customer :

Product line : Jet Pump - J type Three-Phase Product code : 14317336

LOAD PERFORMANCE CURVE

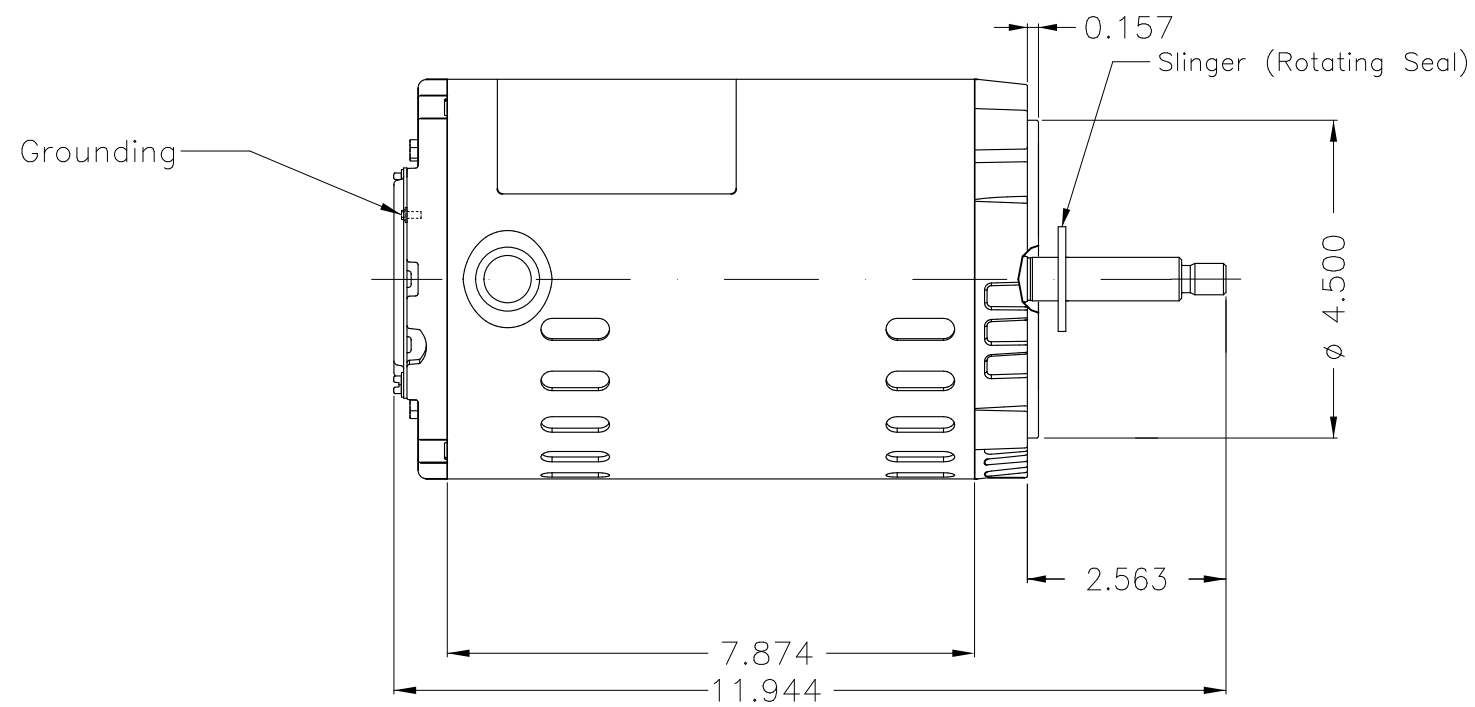
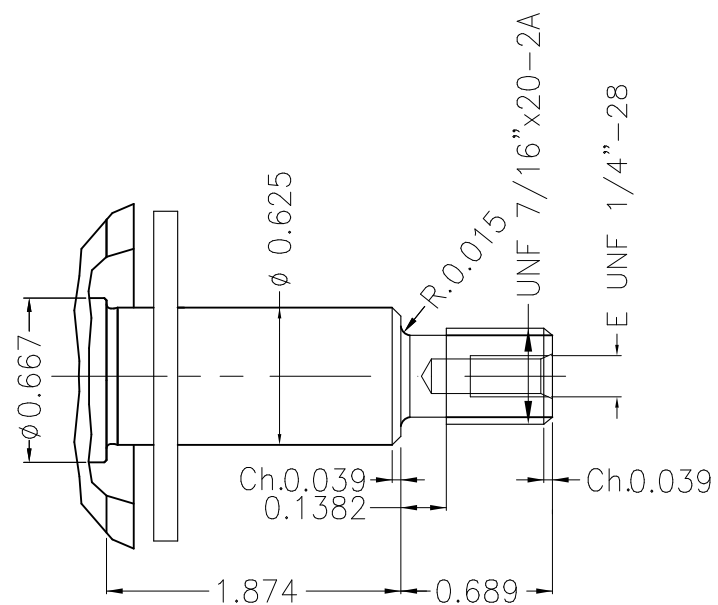
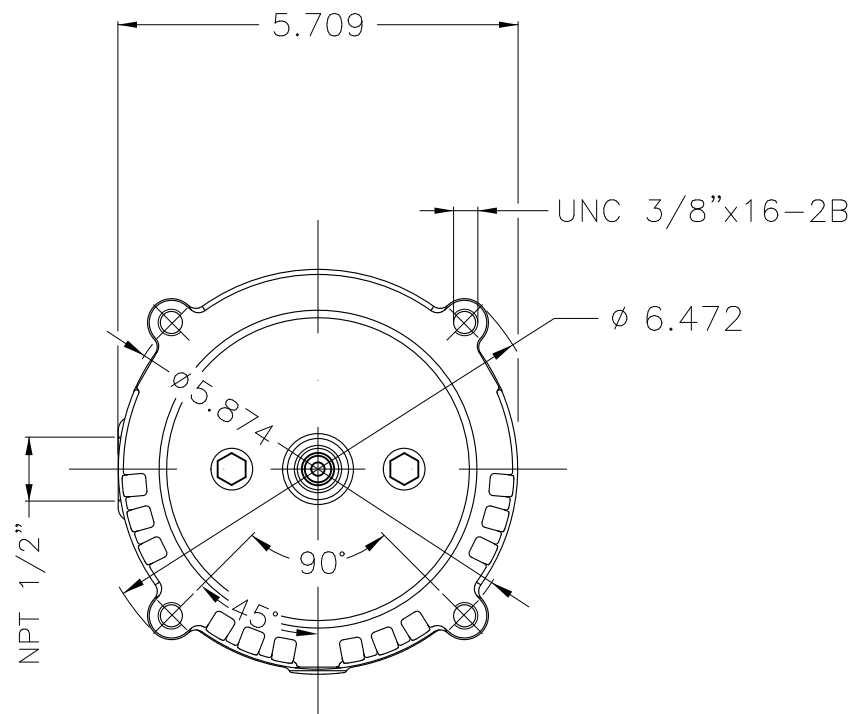


Performance : 220/415 V 50 Hz 2P

Rated current : 4.51/2.39 A
 LRC : 8.5
 Rated torque : 0.384 kgfm
 Locked rotor torque : 440 %
 Breakdown torque : 350 %
 Rated speed : 2835 rpm

Moment of inertia (J) : 0.0014 kgm²
 Duty cycle : Cont.(S1)
 Insulation class : F
 Service factor : 1.15
 Temperature rise : 80 K
 Design : A

Rev.	Changes Summary	Performed	Checked	Date
Performed by			Page 4 / 4	Revision
Checked by				
Date	17/05/2022			



Color Munsell N 1 matte black
 Painting plan 207N
 Mounting F-1/B14R(D)

										HYBRISUSER								00		
ECM	LOC	SUMMARY OF MODIFICATIONS										EXECUTED	CHECKED	RELEASED	DATE	VER				
EXECUTED	HYBRISUSER	THREE PH. MOTOR ROLLED STEEL JET PUMP THREADED PUMP HEAD																		
CHECKED		FRAME W56J IP21 ODP										PREVIEW								
RELEASED												WDD 00								
REL. DATE		WMO	Jaragua do Sul	Product Engineering													SHEET 1 / 1			

1.5 HP 02 Poles 60 Hz

A