

DATA SHEET

Single Phase Induction Motor - Squirrel Cage



| | | | | |
|--|---|--|---------|----------|
| Customer | : | | | |
| Product line | : Jet Pump - J type Single-Phase | Product code : 14313605 | | |
| Frame | : 56J | Cooling method : IC01 - ODP | | |
| Insulation class | : F | Mounting : F-1 | | |
| Duty cycle | : Cont.(S1) | Rotation ¹ : CCW | | |
| Ambient temperature | : -20°C to +40°C | Starting method : Direct On Line | | |
| Altitude | : 1000 m.a.s.l. | Approx. weight ³ : 12.2 kg | | |
| Design | : N | Moment of inertia (J) : 0.0020 kgm ² | | |
| Output [HP] | | 1 | | |
| Poles | | 2 | | |
| Frequency [Hz] | | 60 | | |
| Rated voltage [V] | | 115/208-230 | | |
| Rated current [A] | | 12.8/7.08-6.40 | | |
| L. R. Amperes [A] | | 88.3/48.9-44.2 | | |
| LRC [A] | | 6.9x(Code M) | | |
| No load current [A] | | 8.40/3.62-4.20 | | |
| Rated speed [RPM] | | 3500 | | |
| Slip [%] | | 2.78 | | |
| Rated torque [kgfm] | | 0.207 | | |
| Locked rotor torque [%] | | 260 | | |
| Breakdown torque [%] | | 280 | | |
| Service factor | | | | |
| Temperature rise | | 80 K | | |
| Locked rotor time | | 14s (cold) 8s (hot) | | |
| Noise level ² | | 58.0 dB(A) | | |
| Efficiency (%) | 25% | | | |
| | 50% | 60.0 | | |
| | 75% | 65.0 | | |
| | 100% | 68.0 | | |
| Power Factor | 25% | | | |
| | 50% | 0.55 | | |
| | 75% | 0.67 | | |
| | 100% | 0.75 | | |
| Bearing type | : <u>Drive end</u> 6203 2RS <u>Non drive end</u> 6202 2RS | Foundation loads | | |
| Sealing | : Without Bearing Seal Without Bearing Seal | Max. traction : 12 kgf | | |
| Lubrication interval | : - - | Max. compression : 24 kgf | | |
| Lubricant amount | : - - | | | |
| Lubricant type | : Mobil Polyrex EM | | | |
| Notes | | | | |
| This revision replaces and cancel the previous one, which must be eliminated. (1) Looking the motor from the shaft end. (2) Measured at 1m and with tolerance of +3dB(A). (3) Approximate weight subject to changes after manufacturing process. (4) At 100% of full load. | | These are average values based on tests with sinusoidal power supply, subject to the tolerances stipulated in NEMA MG-1. | | |
| Rev. | Changes Summary | Performed | Checked | Date |
| Performed by | | | | |
| Checked by | | | Page | Revision |
| Date | 17/05/2022 | | 1 / 2 | |

LOAD PERFORMANCE CURVE

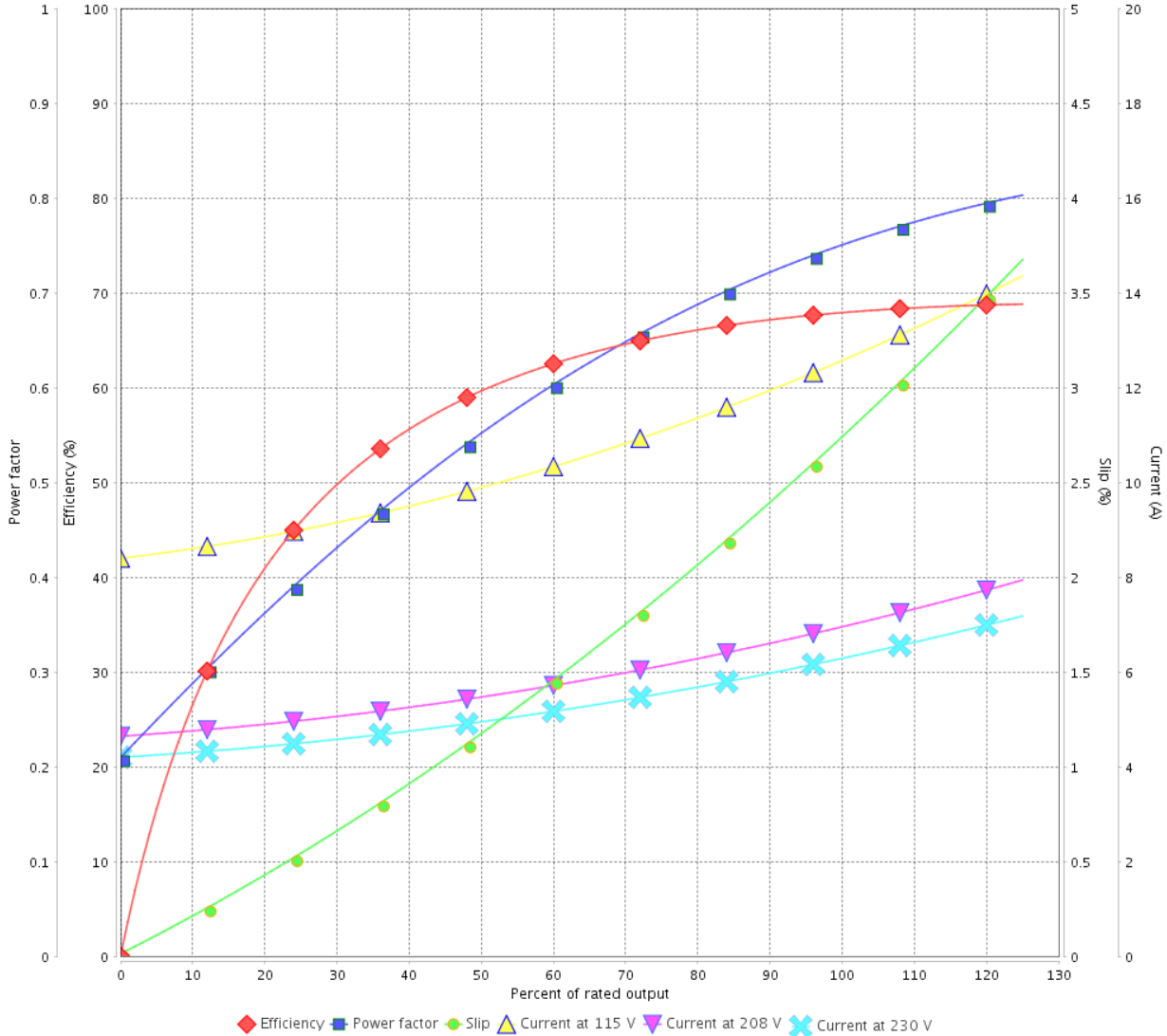
Single Phase Induction Motor - Squirrel Cage



Customer :

Product line : Jet Pump - J type Single-Phase Product code : 14313605

LOAD PERFORMANCE CURVE



Performance : 115/208-230 V 60 Hz 2P

| | | | |
|---------------------|--------------------|-----------------------|---------------------------|
| Rated current | : 12.8/7.08-6.40 A | Moment of inertia (J) | : 0.0020 kgm ² |
| LRC | : 6.9 | Duty cycle | : Cont.(S1) |
| Rated torque | : 0.207 kgfm | Insulation class | : F |
| Locked rotor torque | : 260 % | Service factor | : |
| Breakdown torque | : 280 % | Temperature rise | : 80 K |
| Rated speed | : 3500 rpm | Design | : N |

| Rev. | Changes Summary | Performed | Checked | Date |
|--------------|-----------------|-----------|---------------|----------|
| | | | | |
| Performed by | | | Page 2 / 2 | Revision |
| Checked by | | | | |
| Date | 17/05/2022 | | | |

1 2 3 4 5 6

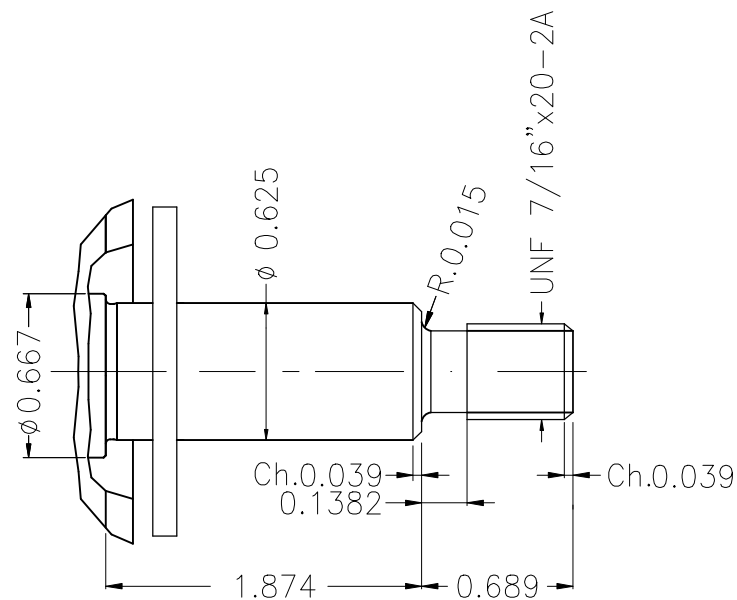
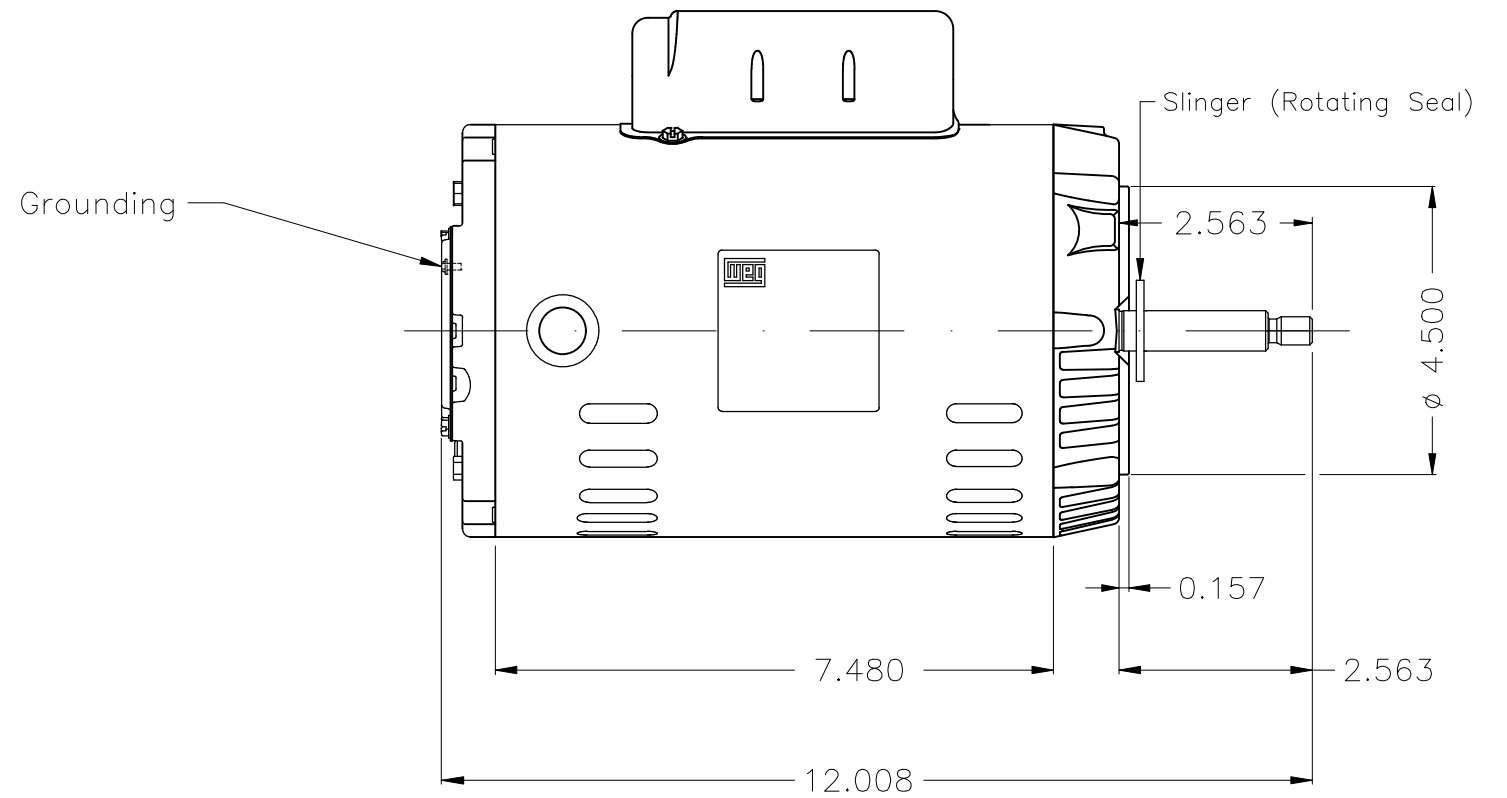
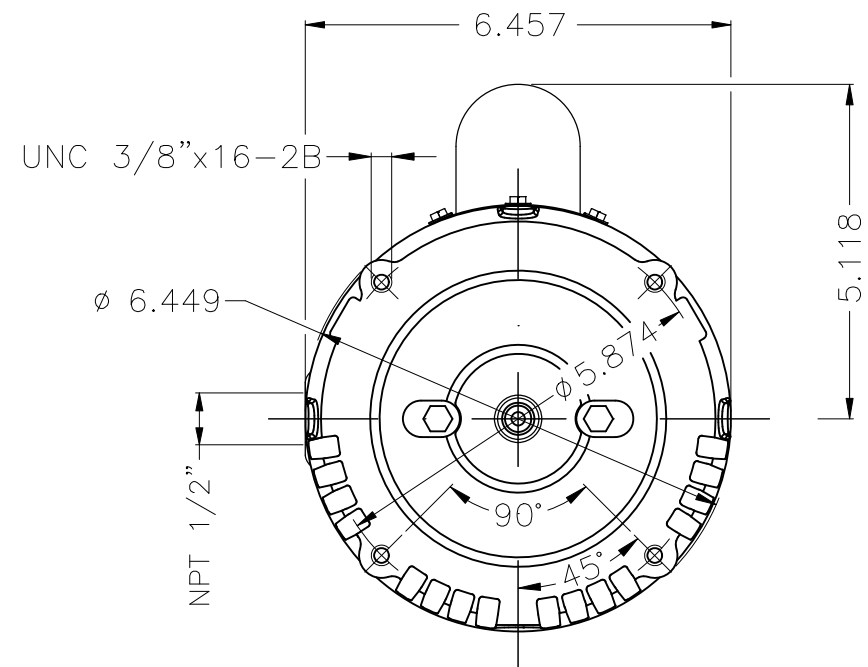
A

B

C

D

E



Color Munsell N 1 matte black
 Painting plan 207N
 Mounting F-1/B14R(D)

| ECM | LOC | SUMMARY OF MODIFICATIONS | EXECUTED | CHECKED | RELEASED | DATE | VER |
|-----|-----|--------------------------|----------|---------|----------|------|-----|
| | | | | | | | |

| | | | | | |
|----------|------------|--|---|---------|-------|
| EXECUTED | HYBRISUSER | | SINGLE PH. MOTOR ROLLED STEEL JET PUMP THREADED FRAME 56J IP21 ODP | PREVIEW | |
| CHECKED | | | | WDD | 00 |
| RELEASED | | | | SHEET | 1 / 1 |

1 HP 02 Poles 60 Hz

WEG's property. Forbidden reproduction without previous authorization.

Dimensions in inches XME A3