

DATA SHEET

Three Phase Induction Motor - Squirrel Cage



Customer :				
Product line		: Jet Pump - C type Three-Phase	Product code :	14290275
Frame	: W56C	Cooling method	: IC01 - ODP	
Insulation class	: F	Mounting	: F-1	
Duty cycle	: Cont.(S1)	Rotation ¹	: CCW	
Ambient temperature	: -20°C to +40°C	Starting method	: Direct On Line	
Altitude	: 1000 m.a.s.l.	Approx. weight ³	: 11.5 kg	
Design	: A	Moment of inertia (J)	: 0.0014 kgm ²	
Output [HP]	1.5			
Poles	2			
Frequency [Hz]	60			
Rated voltage [V]	575			
Rated current [A]	1.69			
L. R. Amperes [A]	14.9			
LRC [A]	8.8x(Code L)			
No load current [A]	0.960			
Rated speed [RPM]	3450			
Slip [%]	4.17			
Rated torque [kgfm]	0.316			
Locked rotor torque [%]	400			
Breakdown torque [%]	430			
Service factor	1.15			
Temperature rise	80 K			
Locked rotor time	23s (cold) 13s (hot)			
Noise level ²	62.0 dB(A)			
Efficiency (%)	25%			
	50%	78.5		
	75%	82.5		
	100%	84.0		
Power Factor	25%			
	50%	0.59		
	75%	0.72		
	100%	0.78		
Bearing type	: Drive end 6203 2RS Non drive end 6202 2RS	Foundation loads		
Sealing	: Without Bearing Seal Without Bearing Seal	Max. traction : 38 kgf		
		Max. compression : 49 kgf		
Lubrication interval	: -			
Lubricant amount	: -			
Lubricant type	: Mobil Polyrex EM			
Notes				
This revision replaces and cancel the previous one, which must be eliminated. (1) Looking the motor from the shaft end. (2) Measured at 1m and with tolerance of +3dB(A). (3) Approximate weight subject to changes after manufacturing process. (4) At 100% of full load.		These are average values based on tests with sinusoidal power supply, subject to the tolerances stipulated in NEMA MG-1.		
Rev.	Changes Summary		Performed	Checked
Performed by				
Checked by			Page	Revision
Date	17/05/2022		1 / 2	

LOAD PERFORMANCE CURVE

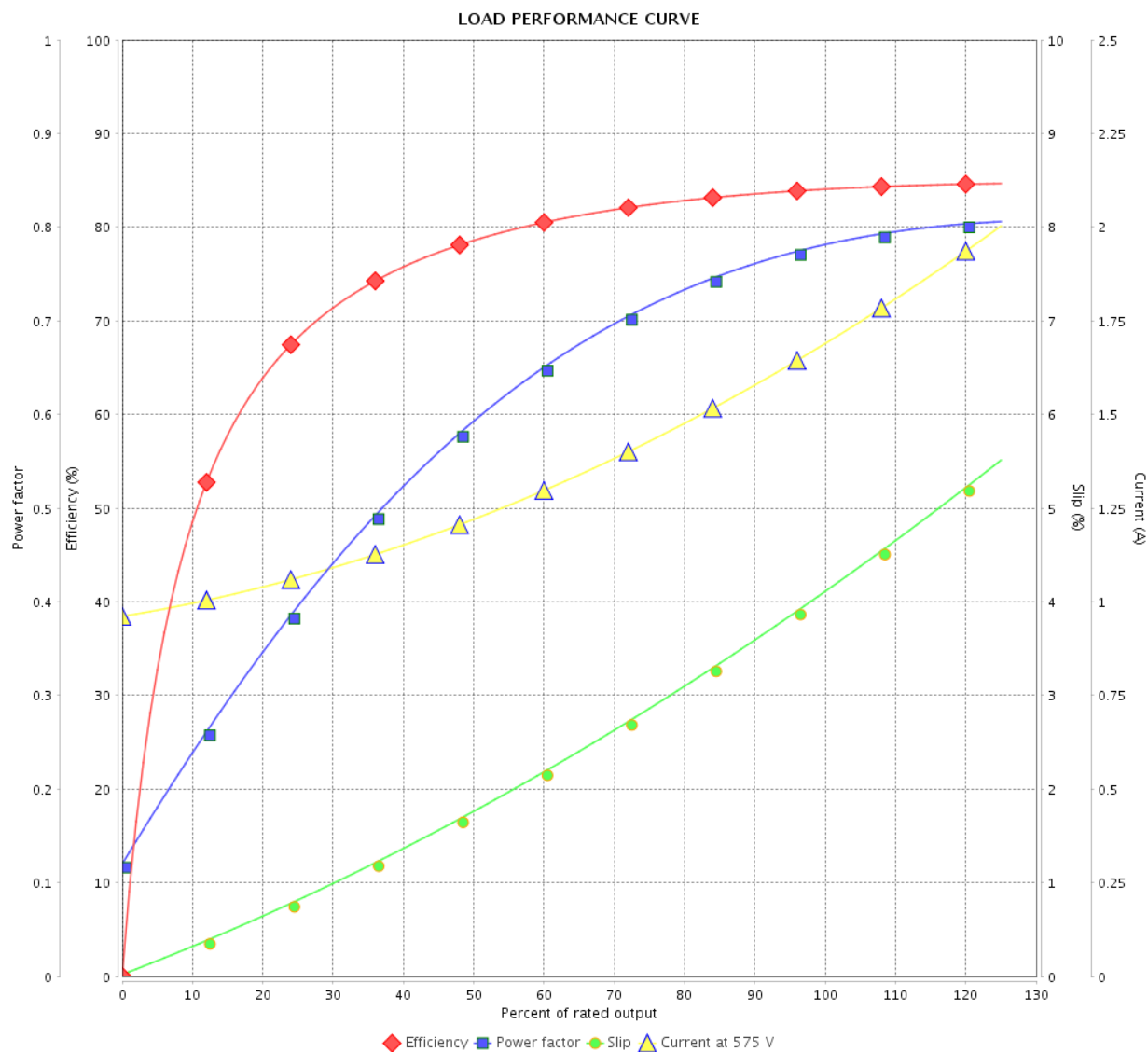
Three Phase Induction Motor - Squirrel Cage



Customer :

Product line : Jet Pump - C type Three-Phase

Product code : 14290275

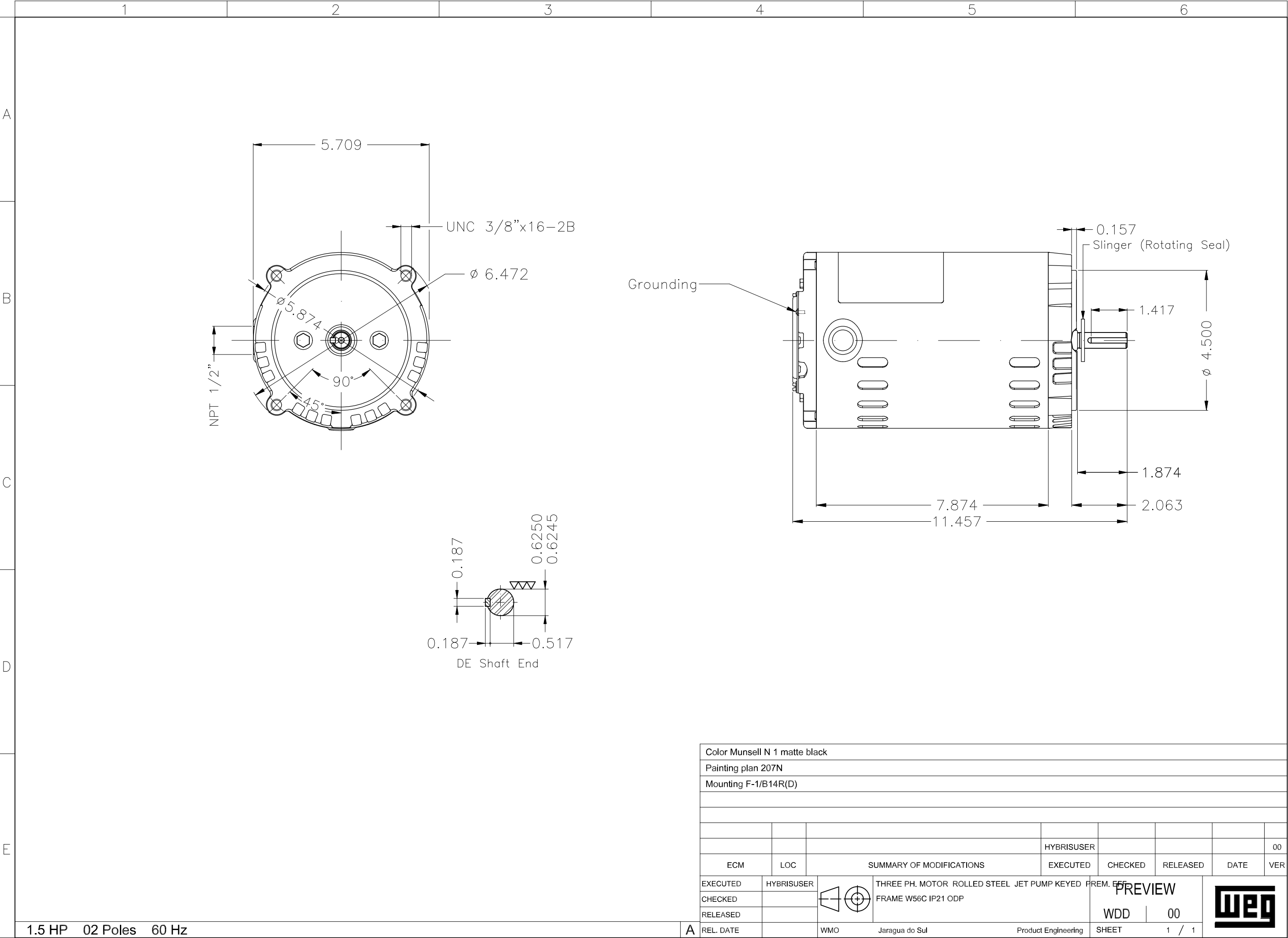


Performance : 575 V 60 Hz 2P

Rated current : 1.69 A
 LRC : 8.8
 Rated torque : 0.316 kgfm
 Locked rotor torque : 400 %
 Breakdown torque : 430 %
 Rated speed : 3450 rpm

Moment of inertia (J) : 0.0014 kgm²
 Duty cycle : Cont.(S1)
 Insulation class : F
 Service factor : 1.15
 Temperature rise : 80 K
 Design : A

Rev.	Changes Summary		Performed	Checked	Date
Performed by				Page	Revision
Checked by				2 / 2	
Date					



Color Munsell N 1 matte black									
Painting plan 207N									
Mounting F-1/B14R(D)									