

DATA SHEET



Three Phase Induction Motor - Squirrel Cage

Customer					
Product line	: Jet Pump - C type Premium Efficiency Three-Phase	Product code :	14919075		
Frame	: W56C	Cooling method	: IC01 - ODP		
Insulation class	: F	Mounting	: F-1		
Duty cycle	: Cont.(S1)	Rotation ¹	: CCW		
Ambient temperature	: -20°C to +40°C	Starting method	: Direct On Line		
Altitude	: 1000 m.a.s.l.	Approx. weight ³	: 8.8 kg		
		Moment of inertia (J)	: 0.0010 kgm ²		
Output [HP]	1				
Poles	2				
Frequency [Hz]	60				
Rated voltage [V]	575				
Rated current [A]	1.30				
L. R. Amperes [A]	10.8				
LRC [A]	8.3x(Code M)				
No load current [A]	0.800				
Rated speed [RPM]	3450				
Slip [%]	4.17				
Rated torque [kgfm]	0.210				
Locked rotor torque [%]	400				
Breakdown torque [%]	409				
Service factor	1.40				
Temperature rise	80 K				
Locked rotor time	23s (cold) 13s (hot)				
Noise level ²	62.0 dB(A)				
Efficiency (%)	25%				
	50%	70.0			
	75%	75.5			
	100%	77.0			
Power Factor	25%				
	50%	0.55			
	75%	0.68			
	100%	0.75			
Bearing type	: Drive end	Non drive end	Foundation loads		
Sealing	: 6203 2RS	6202 2RS	Max. traction	: 23 kgf	
	: Without	Without	Max. compression	: 32 kgf	
	: Bearing Seal	Bearing Seal			
Lubrication interval	: -	-			
Lubricant amount	: -	-			
Lubricant type	: Mobil Polyrex EM				
Notes					
This revision replaces and cancel the previous one, which must be eliminated. (1) Looking the motor from the shaft end. (2) Measured at 1m and with tolerance of +3dB(A). (3) Approximate weight subject to changes after manufacturing process. (4) At 100% of full load.			These are average values based on tests with sinusoidal power supply, subject to the tolerances stipulated in NEMA MG-1.		
Rev.	Changes Summary		Performed	Checked	Date
Performed by					
Checked by				Page	Revision
Date	17/05/2022			1 / 2	

LOAD PERFORMANCE CURVE

Three Phase Induction Motor - Squirrel Cage

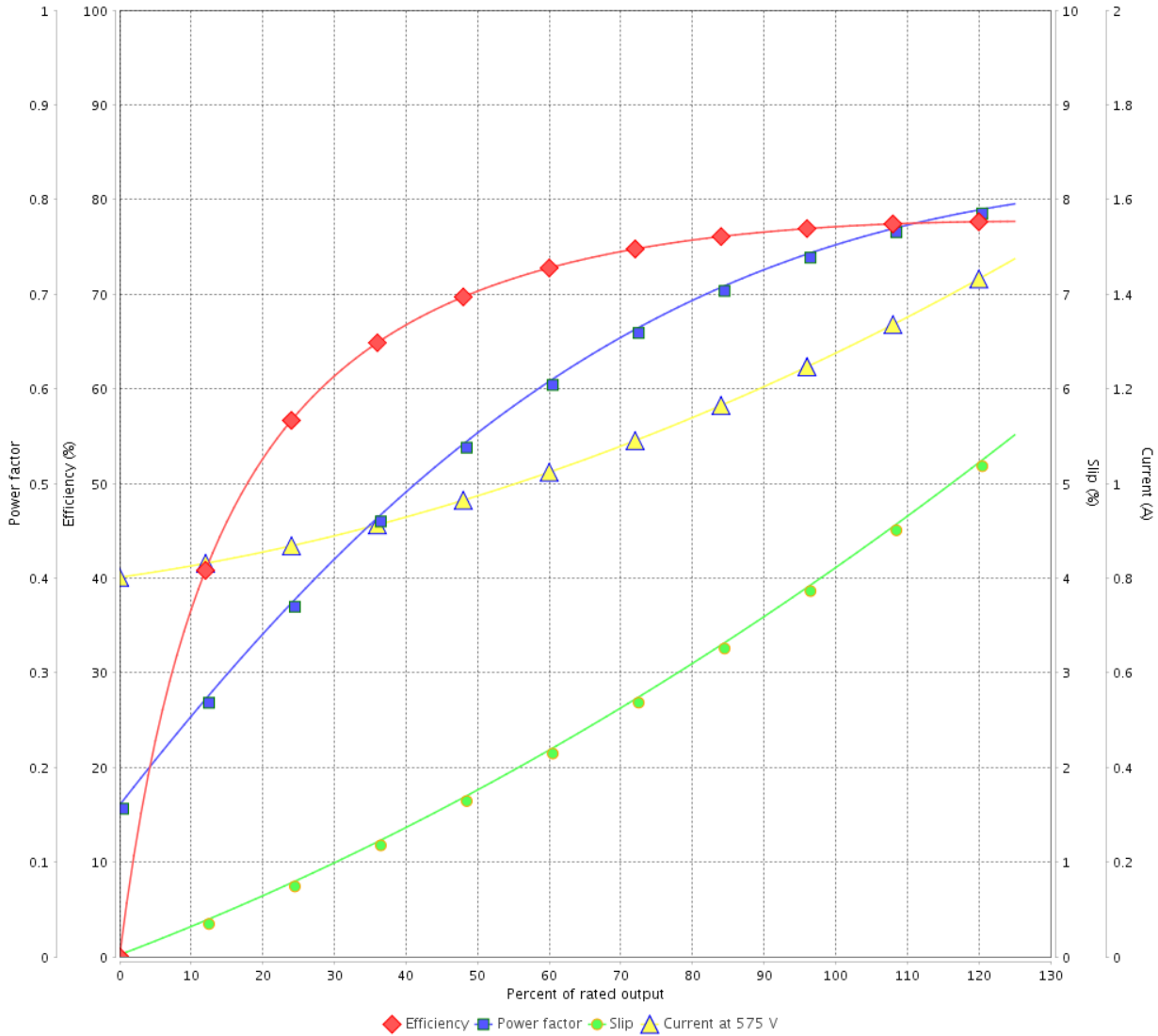


Customer : _____

Product line : Jet Pump - C type Premium
Efficiency Three-Phase

Product code : 14919075

LOAD PERFORMANCE CURVE



Performance : 575 V 60 Hz 2P

Rated current : 1.30 A
LRC : 8.3
Rated torque : 0.210 kgfm
Locked rotor torque : 400 %
Breakdown torque : 409 %
Rated speed : 3450 rpm

Moment of inertia (J) : 0.0010 kgm²
Duty cycle : Cont.(S1)
Insulation class : F
Service factor : 1.40
Temperature rise : 80 K

Rev.	Changes Summary	Performed	Checked	Date
Performed by			Page	Revision
Checked by				
Date				

1 2 3 4 5 6

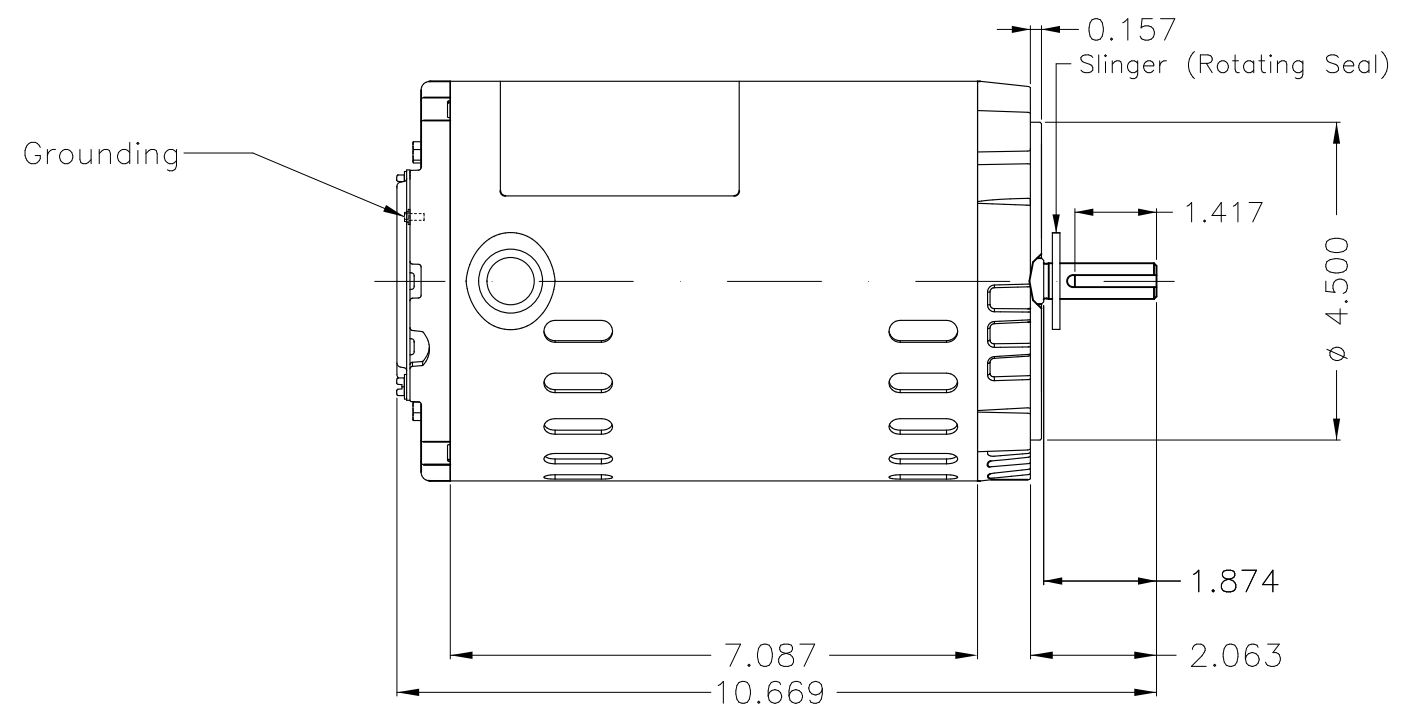
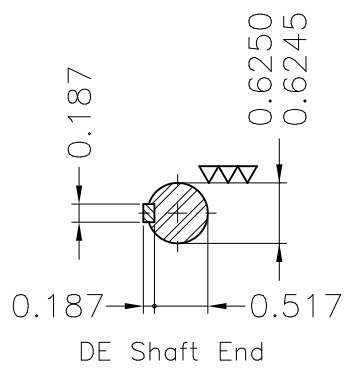
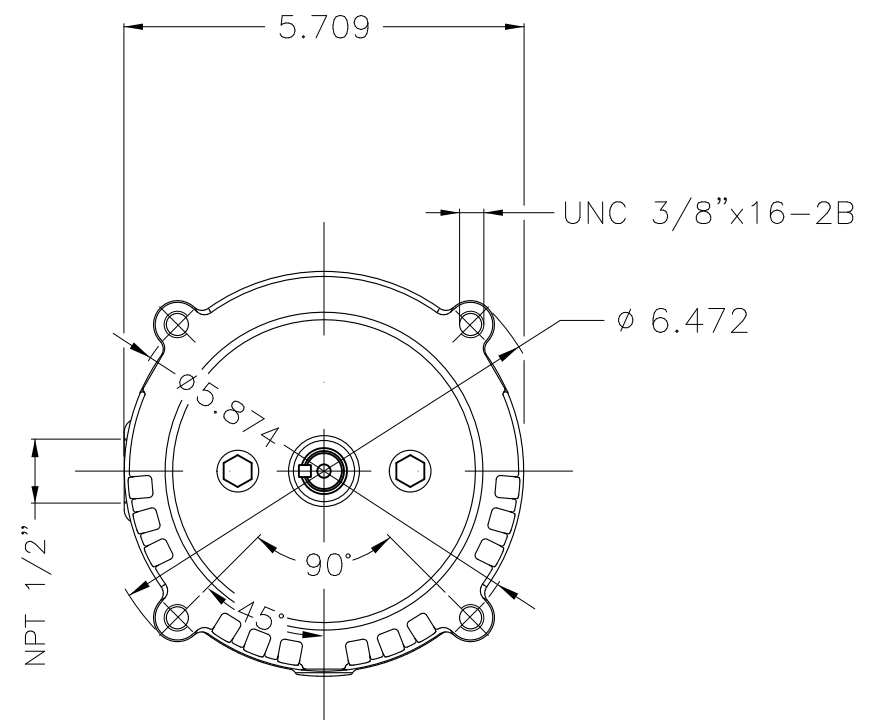
A

B

C

D

E



Color Munsell N 1 matte black
 Painting plan 207N
 Mounting F-1/B14R(D)

ECM	LOC	SUMMARY OF MODIFICATIONS	EXECUTED	CHECKED	RELEASED	DATE	VER
EXECUTED	HYBRISUSER	THREE PH. MOTOR ROLLED STEEL JET PUMP KEYED PREM 555					
CHECKED		FRAME W56C IP21 ODP					
RELEASED							
REL. DATE	WMO	Jaragua do Sul	Product Engineering	PREVIEW	WDD	00	00
			SHEET		1 / 1		

1 HP 02 Poles 60 Hz

A WMO Jaragua do Sul Product Engineering SHEET 1 / 1



Dimensions in inches XME A3