

DATA SHEET

Three Phase Induction Motor - Squirrel Cage



Customer :

Product line : W22 P Base NEMA Premium Efficiency Three-Phase Product code : 14266924

Frame	: 145HP	Locked rotor time	: 25s (cold) 14s (hot)
Output	: 1.5 HP (1.1 kW)	Temperature rise	: 80 K
Poles	: 4	Duty cycle	: Cont.(S1)
Frequency	: 60 Hz	Ambient temperature	: -20°C to +40°C
Rated voltage	: 208 V	Altitude	: 1000 m.a.s.l.
Rated current	: 4.36 A	Protection degree	: IP55
L. R. Amperes	: 36.6 A	Cooling method	: IC411 - TEFC
LRC	: 8.4x(Code L)	Mounting	: W-6
No load current	: 1.90 A	Rotation ¹	: Both (CW and CCW)
Rated speed	: 1755 rpm	Noise level ²	: 51.0 dB(A)
Slip	: 2.50 %	Starting method	: Direct On Line
Rated torque	: 0.620 kgfm	Approx. weight ³	: 25.9 kg
Locked rotor torque	: 290 %		
Breakdown torque	: 350 %		
Insulation class	: F		
Service factor	: 1.25		
Moment of inertia (J)	: 0.0060 kgm ²		
Design	: B		

Output	50%	75%	100%	Foundation loads
Efficiency (%)	82.5	85.5	86.5	Max. traction
Power Factor	0.60	0.70	0.79	Max. compression

Losses at normative operating points (speed;torque), in percentage of rated output power

P1 (0,9;1,0)	P2 (0,5;1,0)	P3 (0,25;1,0)	P4 (0,9;0,5)	P5 (0,5;0,5)	P6 (0,5;0,25)	P7 (0,25;0,25)
14.6	12.1	12.2	8.2	5.7	4.3	3.2

		<u>Drive end</u>	<u>Non drive end</u>
Bearing type	:	6307 ZZ	6204 ZZ
Sealing	:	V'Ring	V'Ring
Lubrication interval	:	-	-
Lubricant amount	:	-	-
Lubricant type	:	Mobil Polyrex EM	

Notes

This revision replaces and cancel the previous one, which must be eliminated.

- (1) Looking the motor from the shaft end.
- (2) Measured at 1m and with tolerance of +3dB(A).
- (3) Approximate weight subject to changes after manufacturing process.
- (4) At 100% of full load.

These are average values based on tests with sinusoidal power supply, subject to the tolerances stipulated in NEMA MG-1.

Rev.	Changes Summary	Performed	Checked	Date
Performed by				
Checked by			Page	Revision
Date	28/10/2024		1 / 2	

LOAD PERFORMANCE CURVE

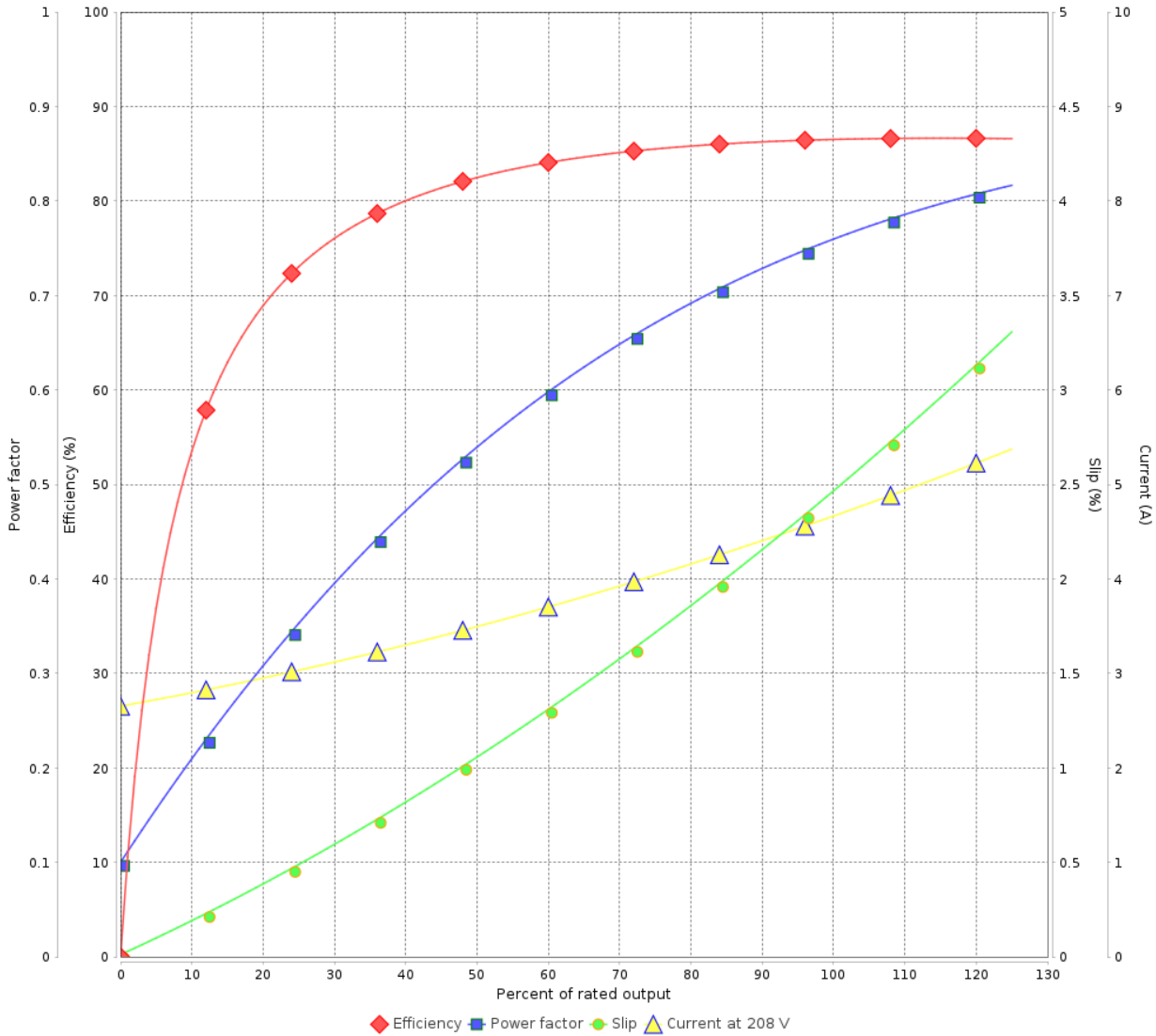
Three Phase Induction Motor - Squirrel Cage



Customer : _____

Product line : W22 P Base NEMA Premium Product code : 14266924
 Efficiency Three-Phase

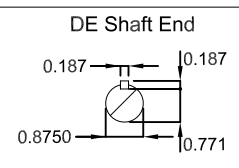
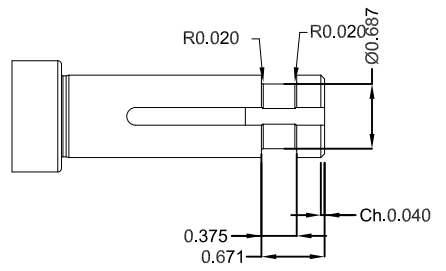
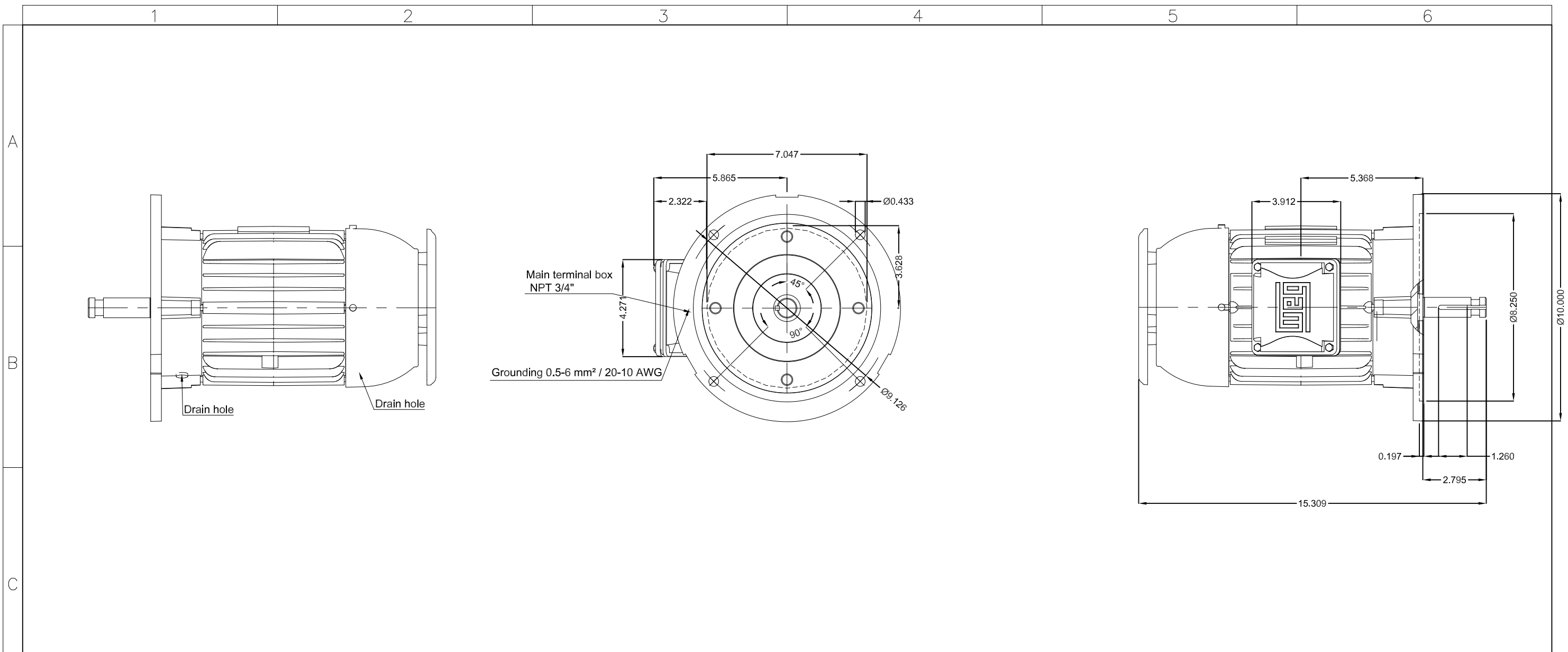
LOAD PERFORMANCE CURVE



Performance : 208 V 60 Hz 4P

Rated current	: 4.36 A	Moment of inertia (J)	: 0.0060 kgm ²
LRC	: 8.4	Duty cycle	: Cont.(S1)
Rated torque	: 0.620 kgfm	Insulation class	: F
Locked rotor torque	: 290 %	Service factor	: 1.25
Breakdown torque	: 350 %	Temperature rise	: 80 K
Rated speed	: 1755 rpm	Design	: B

Rev.	Changes Summary	Performed	Checked	Date
Performed by		Page		Revision
Checked by		2 / 2		
Date	28/10/2024			



Color RAL 5009
 Painting plan 207A
 Mounting NEMA W-6
 Mounting V1

1.5 HP 04 Poles 60 Hz						A
HYBRISUSER						00
ECM	LOC	SUMMARY OF MODIFICATIONS	EXECUTED	CHECKED	RELEASED	DATE
EXECUTED	HYBRISUSER	THREE PH. MOTOR W22 P. BASE NEMA PREM. EFF.				
CHECKED		FRAME 145HP IP55 TEFC				
RELEASED						
REL. DATE						
			PREVIEW		WDD 00	
			SHEET /		WEG	