

# DATA SHEET



## Single Phase Induction Motor - Squirrel Cage

Customer :					
Product line		: Rolled Steel Farm Duty Single-Phase		Product code : 19226130	
Frame	:	W56C	Locked rotor time	: 21s (cold) 12s (hot)	
Output	:	0.33 HP (0.25 kW)	Temperature rise	: 80 K	
Frequency	:	60 Hz	Duty cycle	: Cont.(S1)	
Rated voltage	:	115/230 V	Ambient temperature	: -20°C to +40°C	
Poles	:	4	Altitude	: 1000 m.a.s.l.	
Rated current	:	6.00/3.00 A	Protection degree	: IP55	
	:	5.6x(Code N)	Cooling method	: IC411 - TEFC	
Rated speed	:	1735 rpm	Mounting	: F-1	
Rated torque	:	0.138 kgfm	Rotation <sup>1</sup>	: Both (CW and CCW)	
Insulation class	:	F	Noise level <sup>2</sup>	: 52.0 dB(A)	
Service factor	:	1.15	Starting method	: Direct On Line	
Moment of inertia (J)	:	0.0017 kgm <sup>2</sup>	Approx. weight <sup>3</sup>	: 8.3 kg	
Design	:	N			
Output	50%	75%	100%	Foundation loads	
Efficiency (%)	46.0	55.0	61.0	Max. traction	
Power Factor	0.42	0.51	0.59	Max. compression	
				: 8 kgf	
				: 16 kgf	
Bearing type	:	<u>Drive end</u> 6203 2RS	<u>Non drive end</u> 6202 2RS		
Sealing	:	V'Ring	Without Bearing Seal		
Lubrication interval	:	-	-		
Lubricant amount	:	-	-		
Lubricant type	:	Mobil Polyrex EM			
Notes					
This revision replaces and cancel the previous one, which must be eliminated. (1) Looking the motor from the shaft end. (2) Measured at 1m and with tolerance of +3dB(A). (3) Approximate weight subject to changes after manufacturing process. (4) At 100% of full load.			These are average values based on tests with sinusoidal power supply, subject to the tolerances stipulated in NEMA MG-1.		
Rev.	Changes Summary		Performed	Checked	Date
Performed by					
Checked by				Page	Revision
Date	14/04/2026			1 / 2	

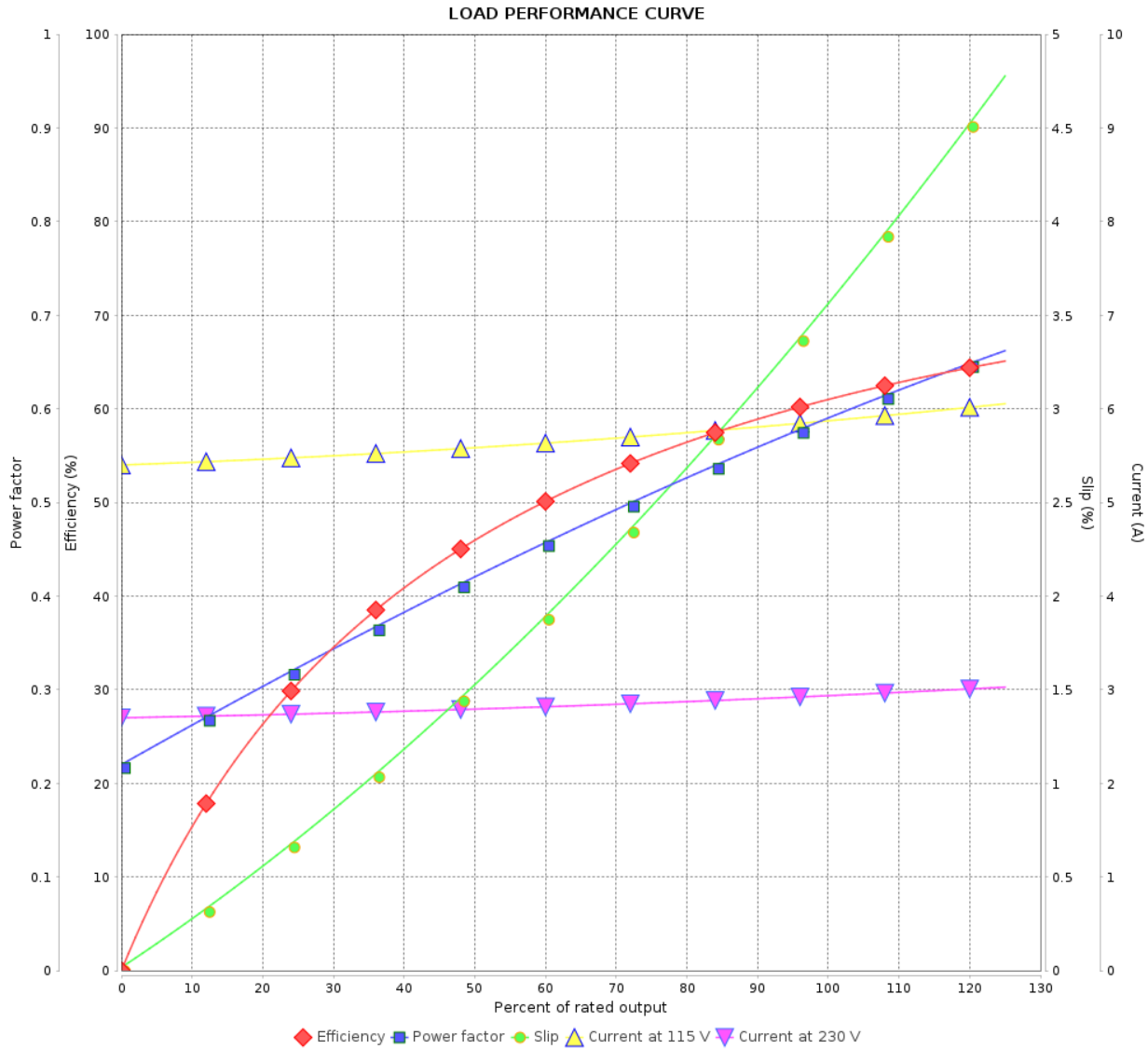
# LOAD PERFORMANCE CURVE

Single Phase Induction Motor - Squirrel Cage

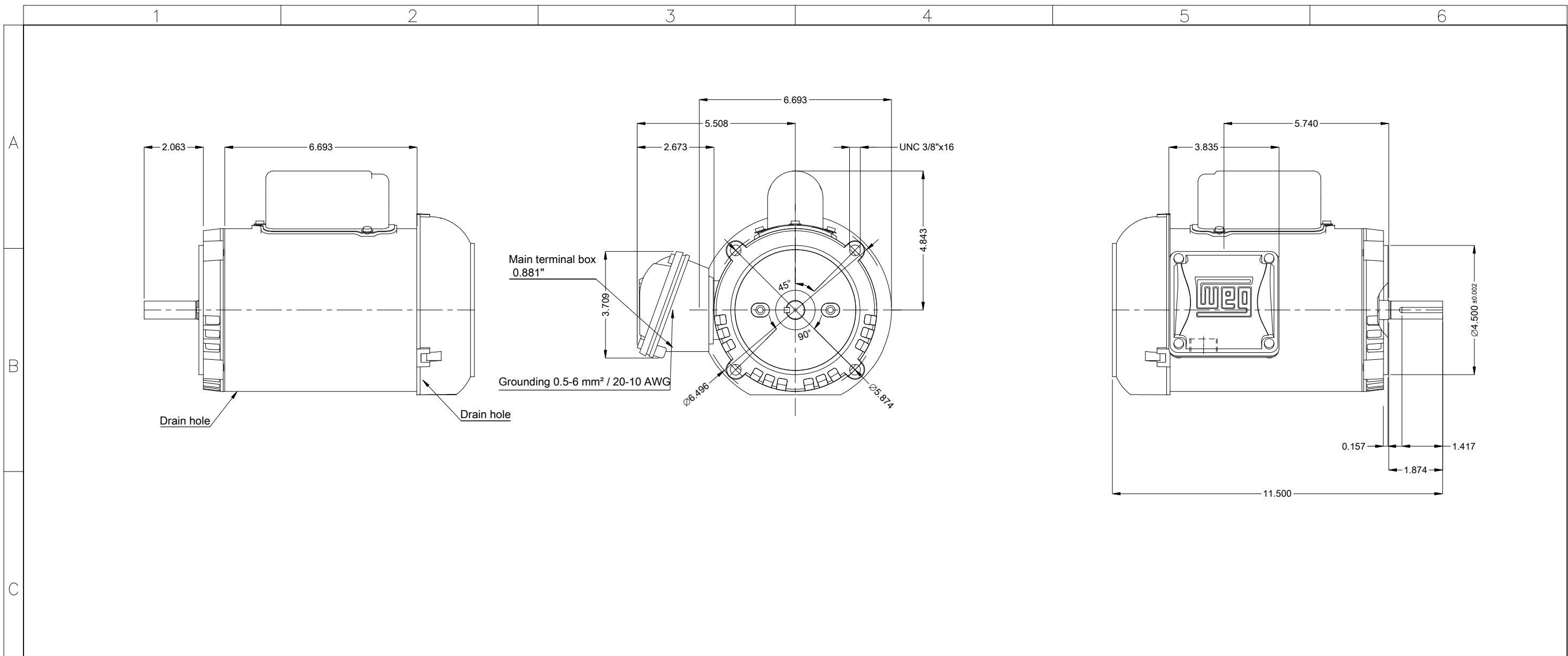


Customer :

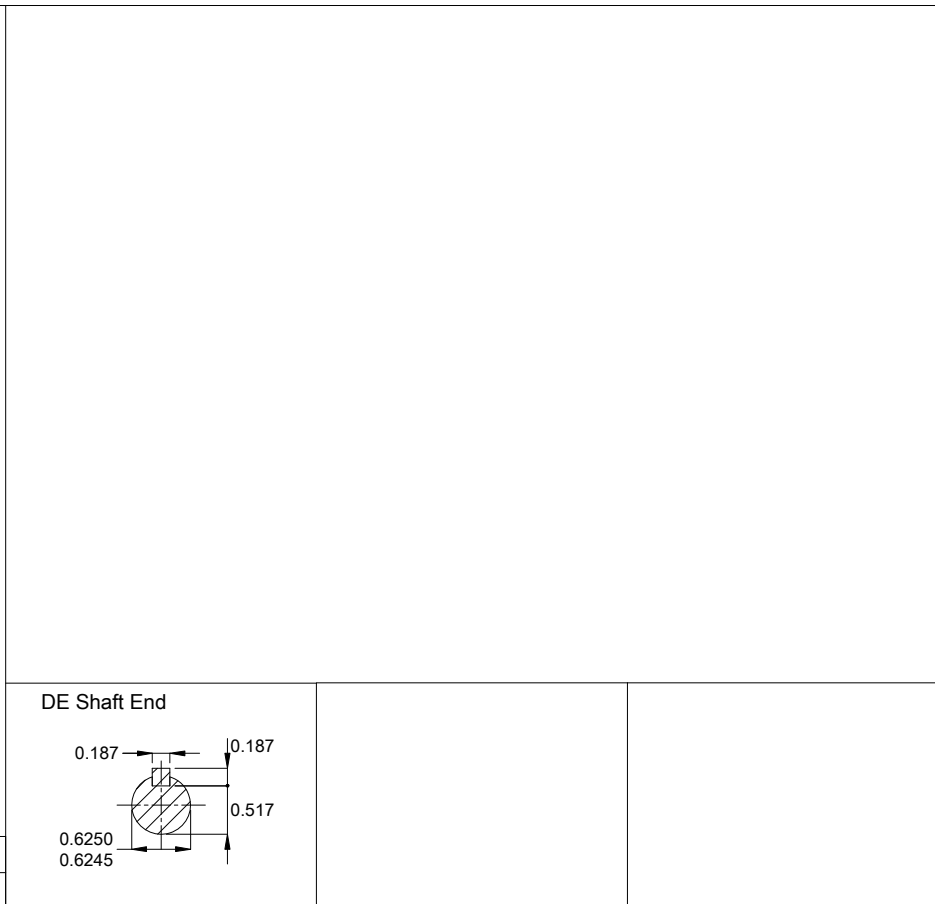
Product line : Rolled Steel Farm Duty Single-Phase      Product code : 19226130



Rev.	Changes Summary	Performed	Checked	Date
Performed by			Page 2 / 2	Revision
Checked by				
Date	14/04/2026			



Mounting MARKET F-1/B14R(D)  
 Mounting F-1/B14R(D)



0.33 HP 04 Poles 60 Hz										A	
Scale 2 : 7											
HYBRISUSER										00	
ECM	LOC	SUMMARY OF MODIFICATIONS					EXECUTED	CHECKED	RELEASED	DATE	VER
EXECUTED	HYBRISUSER	SINGLE PH. MOTOR ROLLED STEEL FARM DUTY FRAME W56C IP55 TEFC					PREVIEW		WDD 00		
CHECKED							SHEET		1 / 1		
RELEASED											
REL. DATE											