

DATA SHEET



Three Phase Induction Motor - Squirrel Cage

Customer	:		
Product line	: NEMA Premium Efficiency Three-Phase	Product code :	12742225
Frame	: 254/6TC	Cooling method	: IC411 - TEFC
Insulation class	: F	Mounting	: F-1
Duty cycle	: Cont.(S1)	Rotation ¹	: Both (CW and CCW)
Ambient temperature	: -20°C to +40°C	Starting method	: Direct On Line
Altitude	: 1000 m.a.s.l.	Approx. weight ³	: 88.2 kg
Protection degree	: IP55	Moment of inertia (J)	: 0.0367 kgm ²
Design	: B		
Output [HP]	15	12.5	12.5
Poles	2	2	2
Frequency [Hz]	60	50	50
Rated voltage [V]	230/460	190/380	220/415
Rated current [A]	34.8/17.4	35.4/17.7	32.3/17.1
L. R. Amperes [A]	237/118	244/122	245/130
LRC [A]	6.8x(Code G)	6.9x(Code H)	7.6x(Code J)
No load current [A]	13.0/6.50	13.6/6.80	13.9/7.39
Rated speed [RPM]	3525	2920	2930
Slip [%]	2.08	2.67	2.33
Rated torque [kgfm]	3.09	3.11	3.10
Locked rotor torque [%]	200	190	210
Breakdown torque [%]	300	290	330
Service factor	1.15	1.00	1.00
Temperature rise	80 K	105 K	105 K
Locked rotor time	25s (cold) 14s (hot)	0s (cold) 0s (hot)	0s (cold) 0s (hot)
Noise level ²	75.0 dB(A)	72.0 dB(A)	72.0 dB(A)
Efficiency (%)	25%	89.2	90.1
	50%	89.5	90.0
	75%	91.0	90.7
	100%	91.0	90.3
Power Factor	25%	0.47	0.43
	50%	0.73	0.70
	75%	0.83	0.81
	100%	0.87	0.86
Bearing type	: <u>Drive end</u> 6309 Z C3 <u>Non drive end</u> 6208 Z C3	Foundation loads	
Sealing	: V'Ring Without Bearing Seal	Max. traction	: 116 kgf
Lubrication interval	: 15797 h 20000 h	Max. compression	: 204 kgf
Lubricant amount	: 13 g 8 g		
Lubricant type	: Mobil Polyrex EM		
Notes USABLE @208V 38.5A SF 1.00 SFA 38.5A			
This revision replaces and cancel the previous one, which must be eliminated. (1) Looking the motor from the shaft end. (2) Measured at 1m and with tolerance of +3dB(A). (3) Approximate weight subject to changes after manufacturing process. (4) At 100% of full load.		These are average values based on tests with sinusoidal power supply, subject to the tolerances stipulated in NEMA MG-1.	
Rev.	Changes Summary	Performed	Checked
Performed by			
Checked by			
Date	13/05/2022		
		Page	Revision
		1 / 4	

LOAD PERFORMANCE CURVE

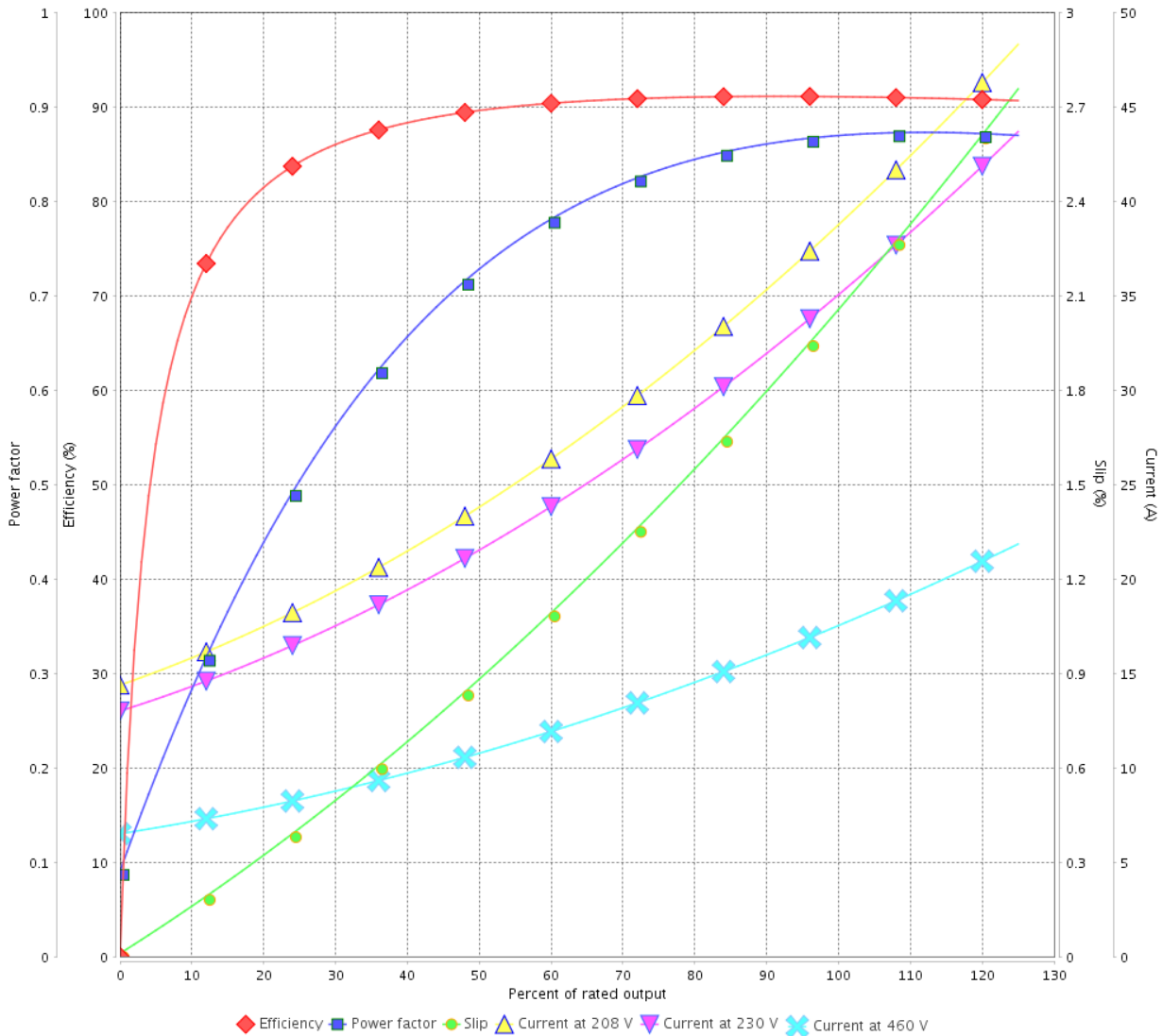
Three Phase Induction Motor - Squirrel Cage



Customer :

Product line : NEMA Premium Efficiency Three-Phase Product code : 12742225

LOAD PERFORMANCE CURVE



Performance : 230/460 V 60 Hz 2P

Rated current : 34.8/17.4 A
 LRC : 6.8
 Rated torque : 3.09 kgfm
 Locked rotor torque : 200 %
 Breakdown torque : 300 %
 Rated speed : 3525 rpm

Moment of inertia (J) : 0.0367 kgm²
 Duty cycle : Cont.(S1)
 Insulation class : F
 Service factor : 1.15
 Temperature rise : 80 K
 Design : B

Rev.	Changes Summary	Performed	Checked	Date
Performed by			Page 2 / 4	Revision
Checked by				
Date	13/05/2022			

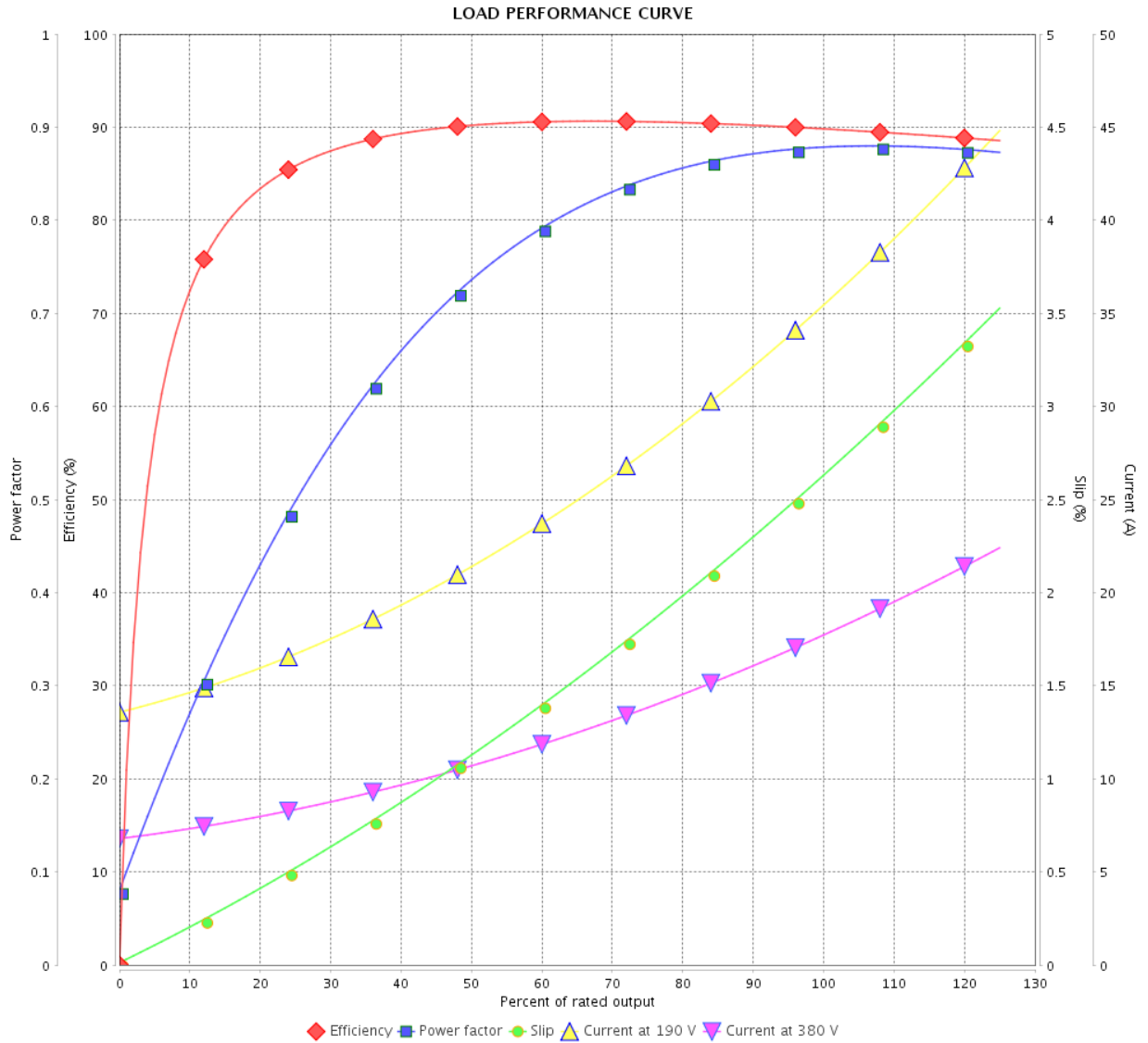
LOAD PERFORMANCE CURVE

Three Phase Induction Motor - Squirrel Cage



Customer : _____

Product line : NEMA Premium Efficiency Three-Phase Product code : 12742225



Performance : 190/380 V 50 Hz 2P

Rated current : 35.4/17.7 A
 LRC : 6.9
 Rated torque : 3.11 kgfm
 Locked rotor torque : 190 %
 Breakdown torque : 290 %
 Rated speed : 2920 rpm

Moment of inertia (J) : 0.0367 kgm²
 Duty cycle : Cont.(S1)
 Insulation class : F
 Service factor : 1.00
 Temperature rise : 105 K
 Design : B

Rev.	Changes Summary	Performed	Checked	Date
Performed by			Page	Revision
Checked by				
Date				

LOAD PERFORMANCE CURVE

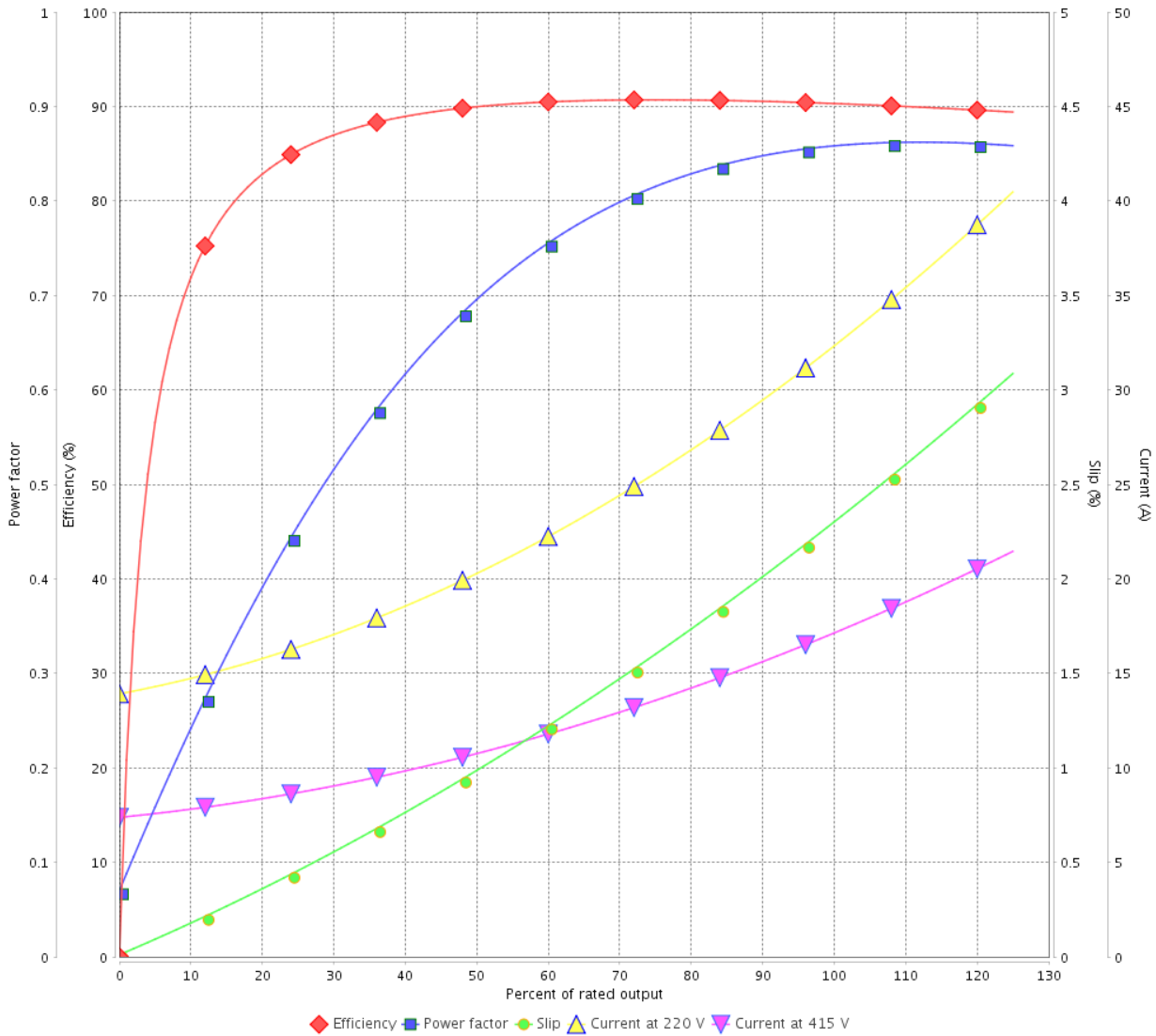
Three Phase Induction Motor - Squirrel Cage



Customer :

Product line : NEMA Premium Efficiency Three-Phase Product code : 12742225

LOAD PERFORMANCE CURVE

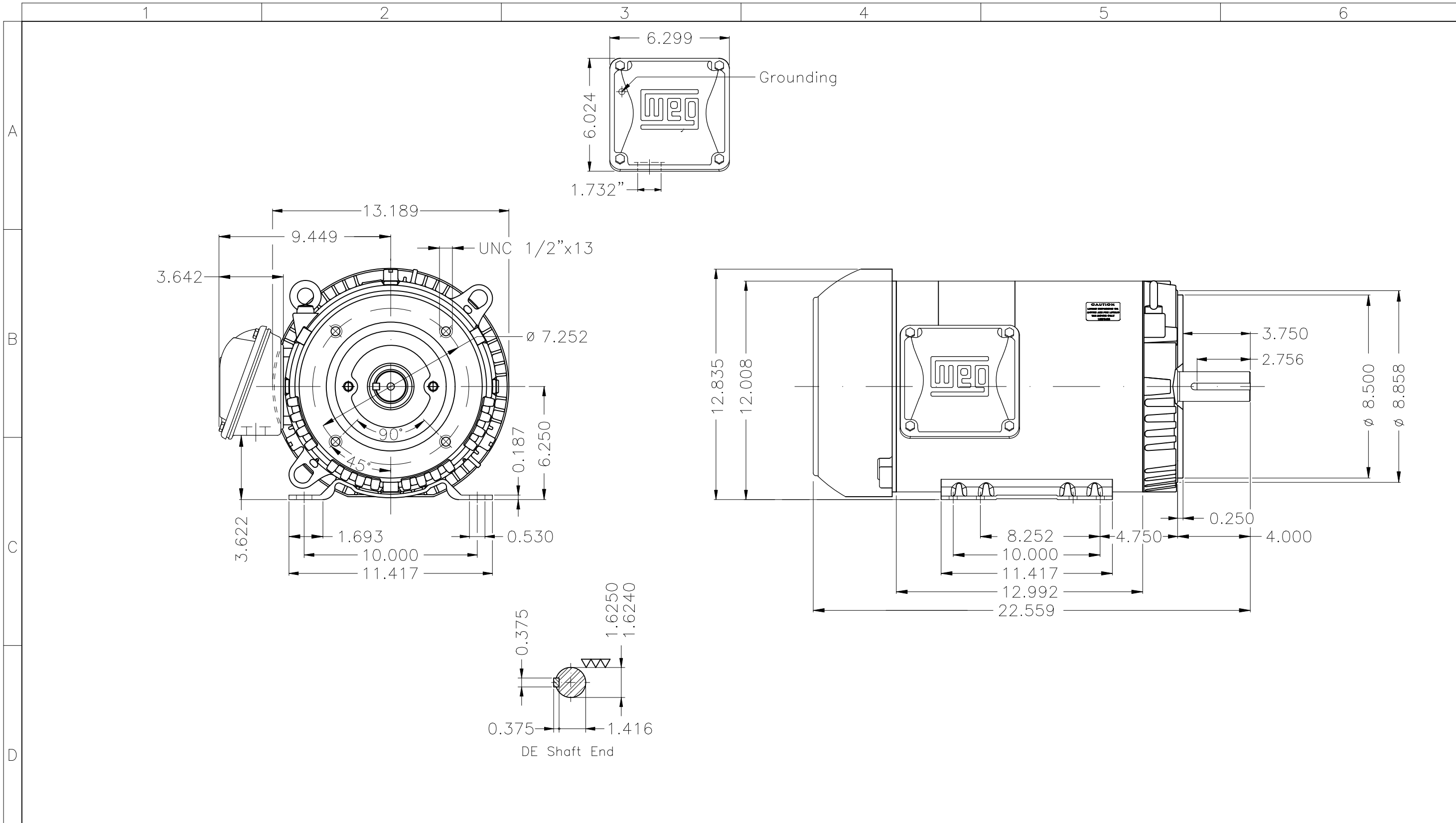


Performance : 220/415 V 50 Hz 2P

Rated current : 32.3/17.1 A
 LRC : 7.6
 Rated torque : 3.10 kgfm
 Locked rotor torque : 210 %
 Breakdown torque : 330 %
 Rated speed : 2930 rpm


Moment of inertia (J) : 0.0367 kgm²
 Duty cycle : Cont.(S1)
 Insulation class : F
 Service factor : 1.00
 Temperature rise : 105 K
 Design : B

Rev.	Changes Summary	Performed	Checked	Date
Performed by			Page	Revision
Checked by				
Date				



A
B
C
D
E

Dimensions in inches XME A3

Color Munsell N 1 matte black									
Painting plan 207N									
Mounting B34D									
					HYBRISUSER	00			
ECM	LOC	SUMMARY OF MODIFICATIONS			EXECUTED	CHECKED	RELEASED	DATE	VER
EXECUTED	HYBRISUSER	THREE PH. MOTOR ROLLED STEEL NEMA PREM. EFF.				PREVIEW			
CHECKED		FRAME 254/6TC IP55 TEFC				WDD	00		
RELEASED						SHEET	1 / 1		
REL. DATE		WMO	Jaragua do Sul	Product Engineering					

15 HP 02 Poles 60 Hz

A