

DATA SHEET

Three Phase Induction Motor - Squirrel Cage



Customer :

Product line : Explosion Proof Standard Efficiency Three-Phase Product code : 14224001

Frame	: A56CEX	Locked rotor time	: 27s (cold) 15s (hot)
Output	: 0.25 HP (0.18 kW)	Temperature rise	: 80 K
Poles	: 4	Duty cycle	: Cont.(S1)
Frequency	: 60 Hz	Ambient temperature	: -20°C to +40°C
Rated voltage	: 575 V	Altitude	: 1000 m.a.s.l.
Rated current	: 0.500 A	Protection degree	: IP44
L. R. Amperes	: 2.50 A	Cooling method	: IC411 - TEFC
LRC	: 5.0x(Code L)	Mounting	: F-1
No load current	: 0.380 A	Rotation ¹	: Both (CW and CCW)
Rated speed	: 1750 rpm	Noise level ²	: 50.0 dB(A)
Slip	: 2.78 %	Starting method	: Direct On Line
Rated torque	: 0.104 kgfm	Approx. weight ³	: 12.9 kg
Locked rotor torque	: 280 %		
Breakdown torque	: 300 %		
Insulation class	: B		
Service factor	: 1.15		
Moment of inertia (J)	: 0.0023 kgm ²		

Output	50%	75%	100%	Foundation loads	
Efficiency (%)	50.5	57.5	64.0	Max. traction	: 3 kgf
Power Factor	0.40	0.48	0.58	Max. compression	: 16 kgf

		<u>Drive end</u>	<u>Non drive end</u>
Bearing type	:	6203 ZZ	6203 ZZ
Sealing	:	Without Bearing Seal	Without Bearing Seal
Lubrication interval	:	-	-
Lubricant amount	:	-	-
Lubricant type	:	Mobil Polyrex EM	

Notes

This revision replaces and cancel the previous one, which must be eliminated.

- (1) Looking the motor from the shaft end.
- (2) Measured at 1m and with tolerance of +3dB(A).
- (3) Approximate weight subject to changes after manufacturing process.
- (4) At 100% of full load.

These are average values based on tests with sinusoidal power supply, subject to the tolerances stipulated in NEMA MG-1.

Rev.	Changes Summary	Performed	Checked	Date
Performed by		Page 1 / 3 Revision		
Checked by				
Date	27/10/2024			

DATA SHEET

Three Phase Induction Motor - Squirrel Cage



Customer :

Thermal protection

ID	Application	Type	Quantity	Sensing Temperature
1	Winding	Thermostat - 2 wires	1 x Phase	130 °C

Rev.	Changes Summary		Performed	Checked	Date
Performed by				Page	Revision
Checked by				2 / 3	
Date	27/10/2024				

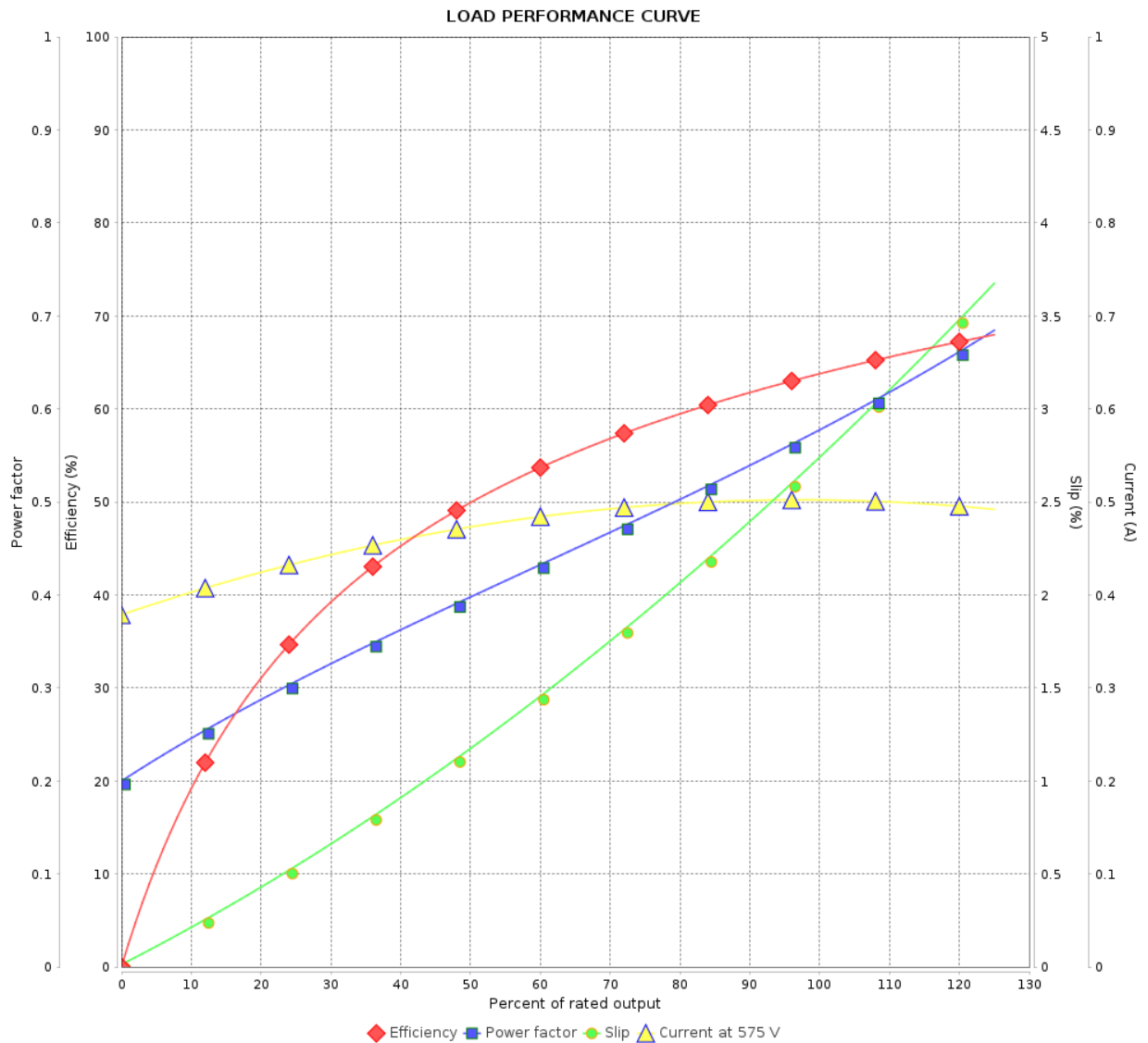
LOAD PERFORMANCE CURVE

Three Phase Induction Motor - Squirrel Cage



Customer :

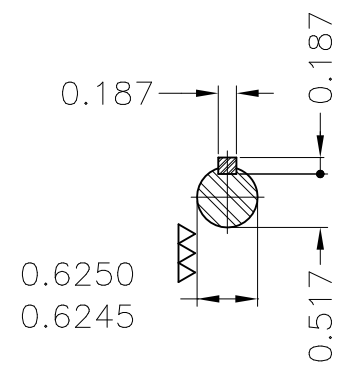
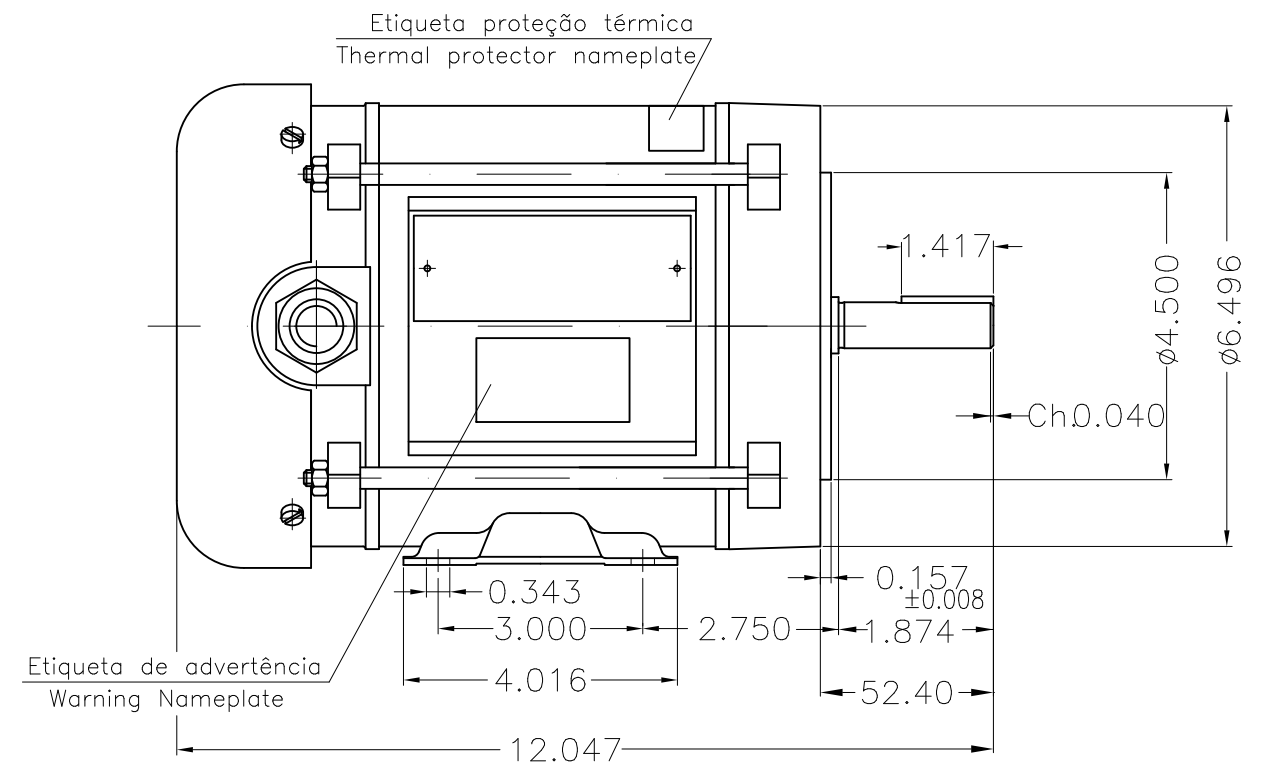
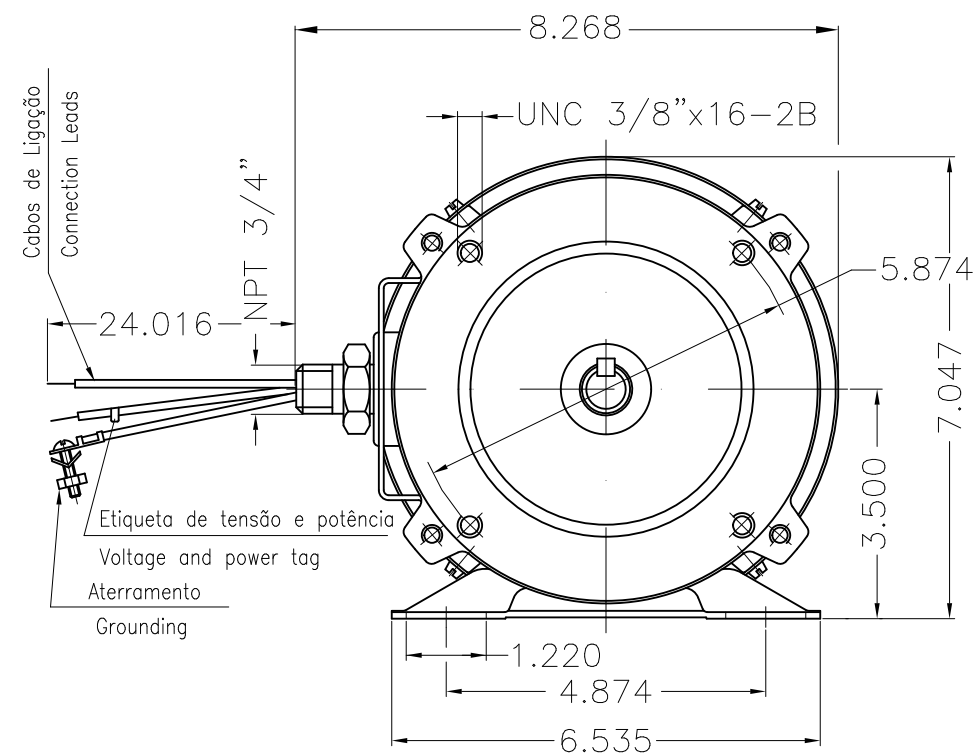
Product line : Explosion Proof Standard Efficiency Three-Phase Product code : 14224001

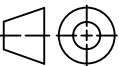



Performance : 575 V 60 Hz 4P

Rated current	: 0.500 A	Moment of inertia (J)	: 0.0023 kgm ²
LRC	: 5.0	Duty cycle	: Cont.(S1)
Rated torque	: 0.104 kgfm	Insulation class	: B
Locked rotor torque	: 280 %	Service factor	: 1.15
Breakdown torque	: 300 %	Temperature rise	: 80 K
Rated speed	: 1750 rpm		

Rev.	Changes Summary	Performed	Checked	Date
Performed by		Page 3 / 3 Revision		
Checked by				
Date	27/10/2024			



Mounting NEMA F-1									
Mounting B34R(D)									
				HYBRISUSER					00
ECM	LOC	SUMMARY OF MODIFICATIONS			EXECUTED	CHECKED	RELEASED	DATE	VER
EXECUTED	HYBRISUSER		THREE PH. MOTOR EXPLOSION PROOF FRAME A56CEX IP44 TEFC			<div>PREVIEW</div> <div>WDD 00</div>			
CHECKED									
RELEASED									
REL. DATE		WMO	Jaragua do Sul	Product Engineering	SHEET	1 / 1			