

DATA SHEET



Single Phase Induction Motor - Squirrel Cage

Customer :								
Product line		: Rolled Steel Jet Pump - C type Single-Phase		Product code : 18653126				
Frame	:	: 56C		Locked rotor time	:	: 12s (cold) 7s (hot)		
Output	:	: 3 HP (2.2 kW)		Temperature rise	:	: 80 K		
Frequency	:	: 60 Hz		Duty cycle	:	: Cont.(S1)		
Rated voltage	:	: 208-230 V		Ambient temperature	:	: -20°C to +40°C		
Poles	:	: 2		Altitude	:	: 1000 m.a.s.l.		
Rated current	:	: 12.8-11.5 A		Protection degree	:	: IP55		
	:	: 6.7x(Code G)		Cooling method	:	: IC411 - TEFC		
Rated speed	:	: 3475 rpm		Mounting	:	: F-1		
Rated torque	:	: 0.627 kgfm		Rotation ¹	:	: CCW		
Insulation class	:	: F		Starting method	:	: Direct On Line		
Service factor	:	: 1.15		Approx. weight ²	:	: 20.5 kg		
Moment of inertia (J)	:	: 0.0040 kgm ²						
Design	:	: L						
Output	25%	50%	75%	100%	Foundation loads			
Efficiency (%)	0.000	81.5	84.0	84.1	Max. traction : 46 kgf			
Power Factor	0.00	0.97	0.98	0.99	Max. compression : 66 kgf			
					Drive end		Non drive end	
Bearing type	:	6203 2RS				6202 2RS		
Sealing	:	V'Ring				Without Bearing Seal		
Lubrication interval	:	0 h				0 h		
Lubricant amount	:	0 g				0 g		
Lubricant type	:	Mobil Polyrex EM						
Notes								
This revision replaces and cancel the previous one, which must be eliminated. (1) Looking the motor from the shaft end. (2) Measured at 1m and with tolerance of +3dB(A). (3) Approximate weight subject to changes after manufacturing process. (4) At 100% of full load.					These are average values based on tests with sinusoidal power supply, subject to the tolerances stipulated in NEMA MG-1.			
Rev.	Changes Summary				Performed	Checked	Date	
Performed by								
Checked by						Page	Revision	
Date	26/06/2026					1 / 2		

LOAD PERFORMANCE CURVE

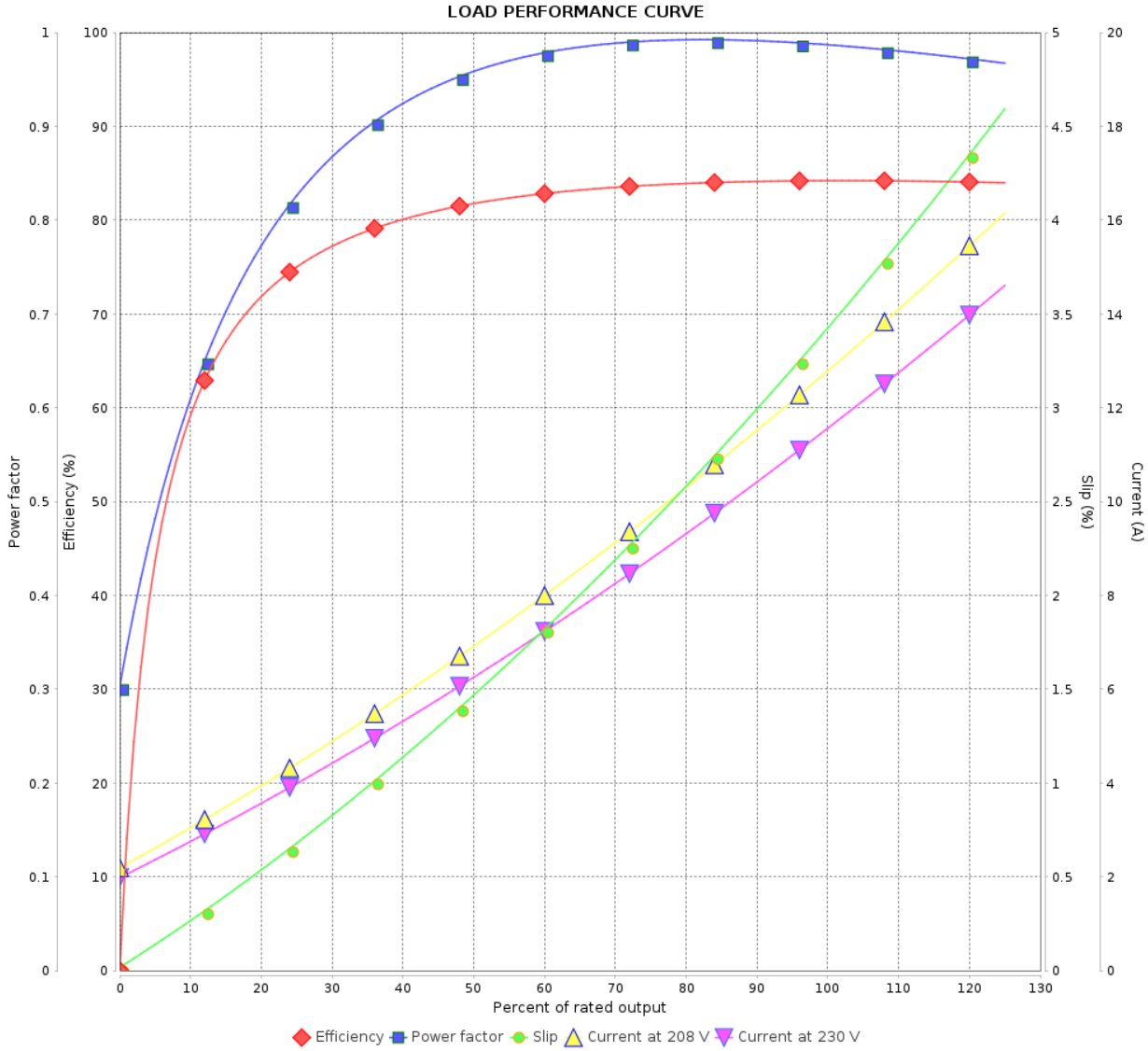
Single Phase Induction Motor - Squirrel Cage



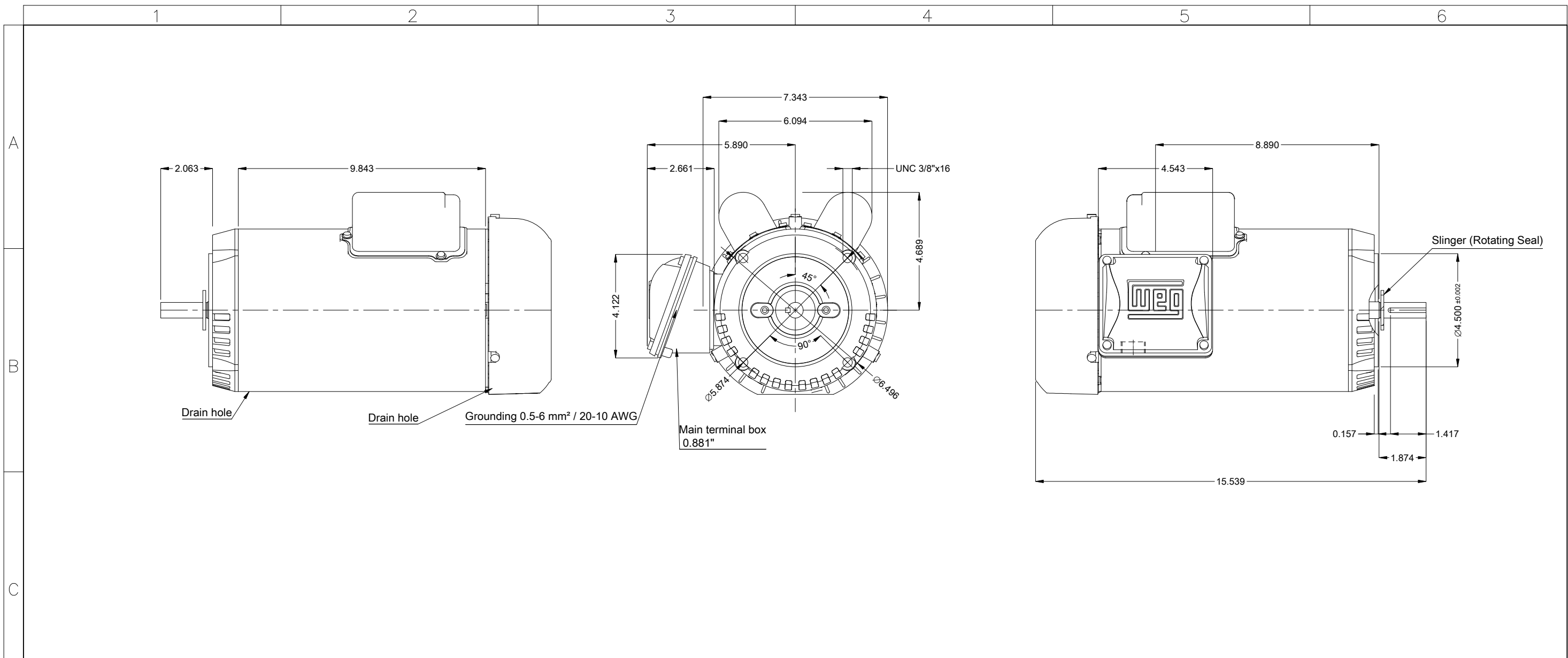
Customer : _____

Product line : Rolled Steel Jet Pump - C type
Single-Phase

Product code : 18653126



Rev.	Changes Summary	Performed	Checked	Date
Performed by			Page 2 / 2	Revision
Checked by				
Date 26/06/2026				



D			3 HP 02 Poles 60 Hz		A					
			Scale 1 : 4							
E	Shaft material - stainless steel AISI 304	DE Shaft End 			HYBRISUSER	00				
	Fan cover - steel plate		ECM	LOC	SUMMARY OF MODIFICATIONS	EXECUTED	CHECKED	RELEASED	DATE	VER
	Color Munsell N 1 matte black		EXECUTED	HYBRISUSER	SINGLE PH. MOTOR ROLLED STEEL JET PUMP KEYED PREM. EFF. FRAME 56C IP55 TEFC	PREVIEW WDD 00				
	Painting plan 207N		CHECKED			SHEET 1 / 1				
	Mounting MARKET F-1/B14R(D)		RELEASED							
Mounting F-1/B14R(D)	REL. DATE									