

DATA SHEET



Three Phase Induction Motor - Squirrel Cage

Customer :

Product line : Rolled Steel NEMA Premium Efficiency Three-Phase Product code : 12845473

Frame	: 213/5TC	Locked rotor time	: 27s (cold) 15s (hot)
Output	: 10 HP (7.5 kW)	Temperature rise	: 80 K
Frequency	: 60 Hz	Duty cycle	: Cont.(S1)
Rated voltage	: 575 V	Ambient temperature	: -20°C to +40°C
Poles	: 4	Altitude	: 1000 m.a.s.l.
Rated current	: 9.66 A	Protection degree	: IP55
	: 7.3x(Code H)	Cooling method	: IC411 - TEFC
Rated speed	: 1770 rpm	Mounting	: F-1
Rated torque	: 4.10 kgfm	Rotation ¹	: Both (CW and CCW)
Insulation class	: F	Noise level ²	: 60.0 dB(A)
Service factor	: 1.15	Starting method	: Direct On Line
Moment of inertia (J)	: 0.0451 kgm ²	Approx. weight ³	: 63.5 kg
Design	: B		

Output	25%	50%	75%	100%	Foundation loads	
Efficiency (%)	0.000	90.2	91.0	91.7	Max. traction	: 0 kgf
Power Factor	0.00	0.68	0.80	0.85	Max. compression	: 0 kgf

Losses at normative operating points (speed;torque), in percentage of rated output power

P1 (0,9;1,0)	P2 (0,5;1,0)	P3 (0,25;1,0)	P4 (0,9;0,5)	P5 (0,5;0,5)	P6 (0,5;0,25)	P7 (0,25;0,25)
8.8	7.7	7.3	4.2	3.0	2.0	1.5

	Drive end	Non drive end
Bearing type	: 6208 ZZ	6206 ZZ
Sealing	: V'Ring	Without Bearing Seal
Lubrication interval	: -	-
Lubricant amount	: -	-
Lubricant type	: Mobil Polyrex EM	

Notes

This revision replaces and cancel the previous one, which must be eliminated.

- (1) Looking the motor from the shaft end.
- (2) Measured at 1m and with tolerance of +3dB(A).
- (3) Approximate weight subject to changes after manufacturing process.
- (4) At 100% of full load.

These are average values based on tests with sinusoidal power supply, subject to the tolerances stipulated in NEMA MG-1.

Rev.	Changes Summary	Performed	Checked	Date
Performed by		Page		Revision
Checked by		1 / 2		
Date	19/04/2026			

LOAD PERFORMANCE CURVE

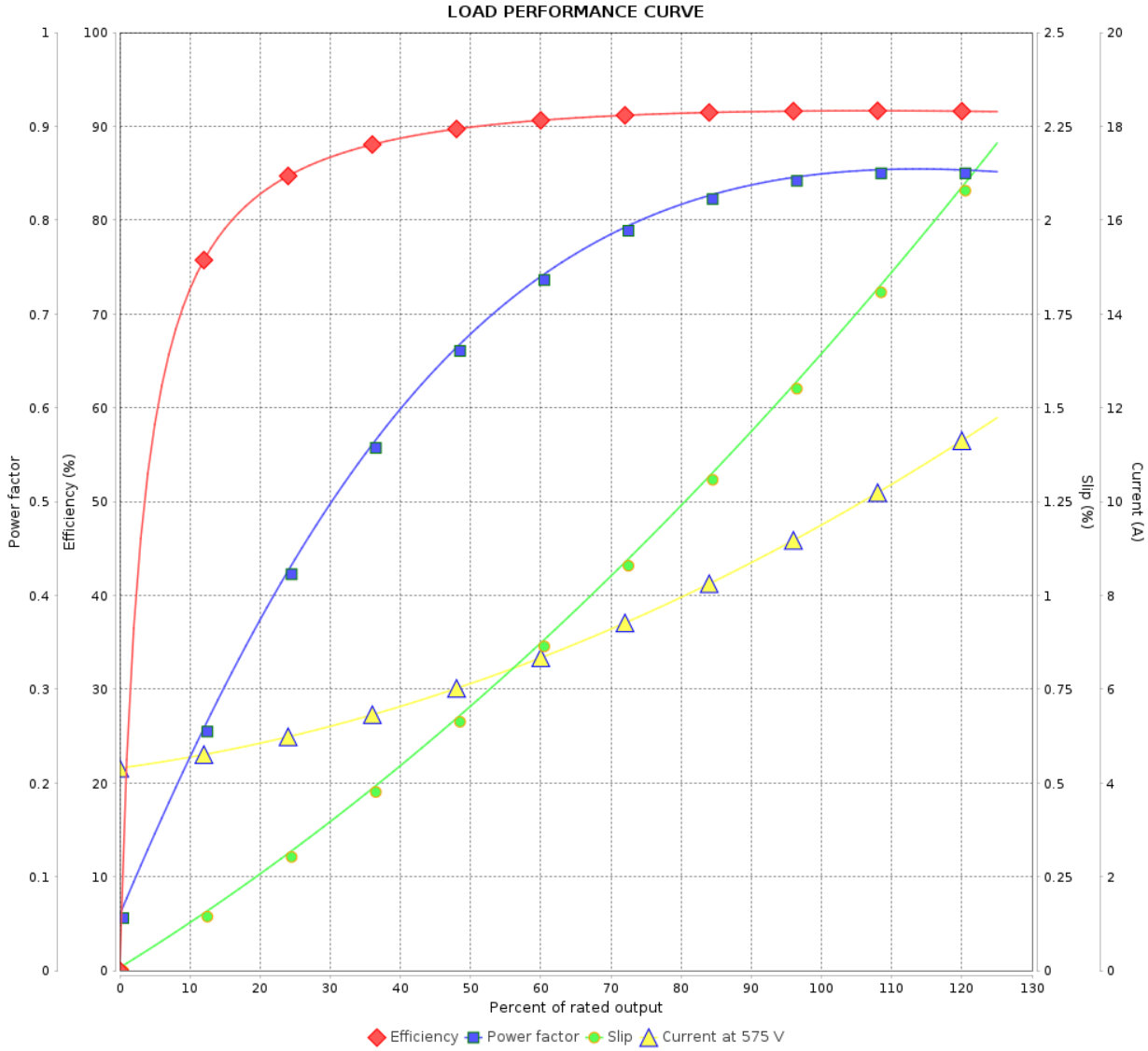
Three Phase Induction Motor - Squirrel Cage



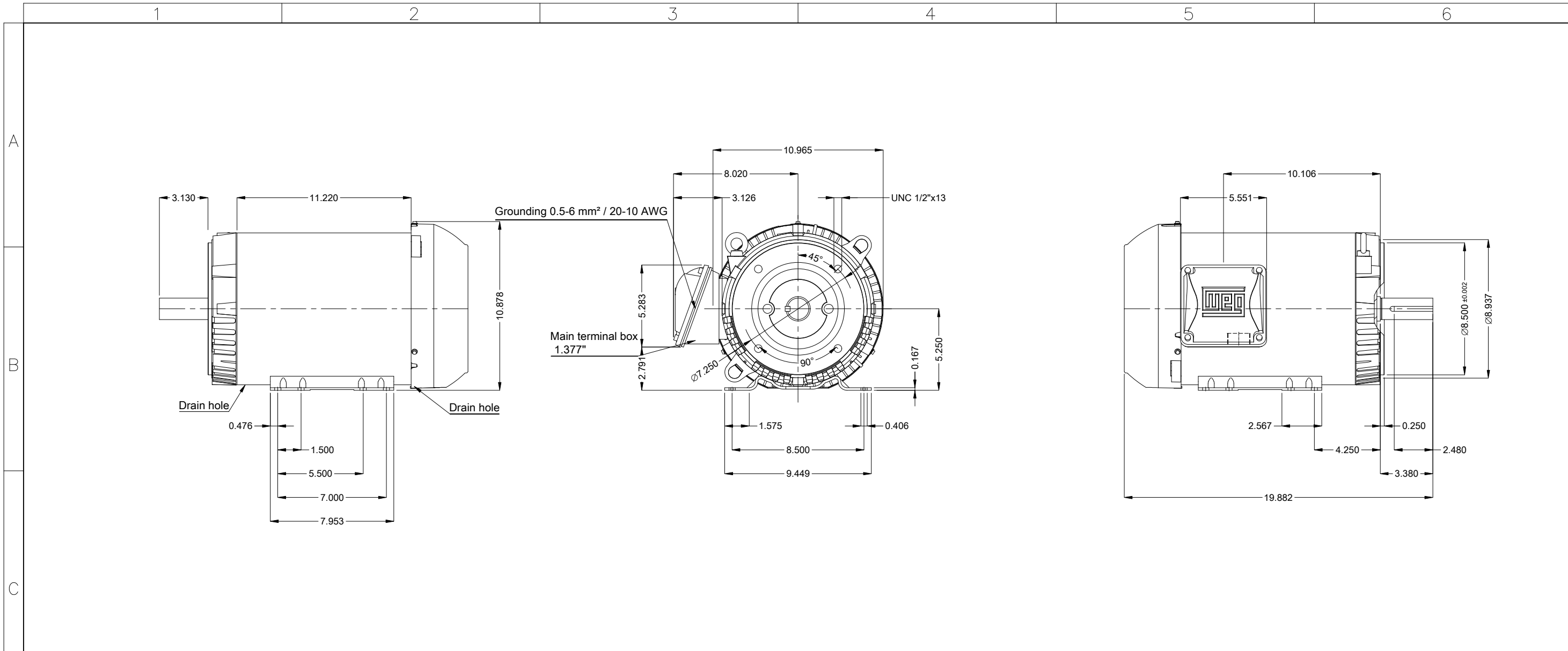
Customer : _____

Product line : Rolled Steel NEMA Premium
Efficiency Three-Phase

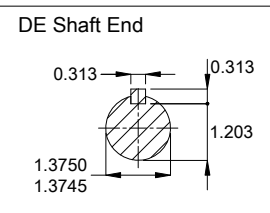
Product code : 12845473



Rev.	Changes Summary	Performed	Checked	Date
Performed by		Page		Revision
Checked by		2 / 2		
Date		19/04/2026		



Color Munsell N 1 matte black
 Painting plan 207N
 Mounting MARKET F-1/B34R(D)
 Mounting B34D



10 HP 04 Poles 60 Hz										A
Scale 2 : 13										
HYBRISUSER										00
ECM	LOC	SUMMARY OF MODIFICATIONS			EXECUTED	CHECKED	RELEASED	DATE	VER	
EXECUTED	HYBRISUSER	THREE PH. MOTOR ROLLED STEEL NEMA PREM. EFF.								
CHECKED		FRAME 213/5TC IP55 TEFC								
RELEASED										
REL. DATE										
					PREVIEW		WDD 00		SHEET 1 / 1	

