

DATA SHEET



Three Phase Induction Motor - Squirrel Cage

Customer :							
Product line : W22 Brake Motor NEMA Premium Efficiency Three-Phase Product code : 14199316							
Frame	: 143/5TC	Locked rotor time	: 18s (cold) 10s (hot)	Output	: 2 HP (1.5 kW)	Temperature rise	: 80 K
Poles	: 4	Duty cycle	: Cont.(S1)	Frequency	: 60 Hz	Ambient temperature	: -20°C to +40°C
Rated voltage	: 575 V	Altitude	: 1000 m.a.s.l.	Rated current	: 2.23 A	Protection degree	: IP55
L. R. Amperes	: 18.5 A	Cooling method	: IC411 - TEFC	LRC	: 8.3x(Code L)	Mounting	: F-1
No load current	: 1.30 A	Rotation ¹	: Both (CW and CCW)	Rated speed	: 1750 rpm	Noise level ²	: 51.0 dB(A)
Rated torque	: 0.829 kgfm	Starting method	: Direct On Line	Slip	: 2.78 %	Approx. weight ³	: 28.2 kg
Locked rotor torque	: 270 %			Breakdown torque	: 320 %		
Insulation class	: F			Service factor	: 1.25		
Moment of inertia (J)	: 0.0066 kgm ²			Design	: B		
Output	50%	75%	100%	Foundation loads			
Efficiency (%)	85.5	86.5	86.5	Max. traction	: 61 kgf		
Power Factor	0.57	0.70	0.78	Max. compression	: 90 kgf		
Losses at normative operating points (speed;torque), in percentage of rated output power							
P1 (0,9;1,0)	P2 (0,5;1,0)	P3 (0,25;1,0)	P4 (0,9;0,5)	P5 (0,5;0,5)	P6 (0,5;0,25)	P7 (0,25;0,25)	
15.0	12.8	12.1	8.4	6.0	4.7	3.5	
		<u>Drive end</u>		<u>Non drive end</u>			
Bearing type	:	6205 ZZ		6204 ZZ			
Sealing	:	V'Ring		Lip Seal			
Lubrication interval	:	-		-			
Lubricant amount	:	-		-			
Lubricant type	:	Mobil Polyrex EM					
Notes:							
This revision replaces and cancel the previous one, which must be eliminated. (1) Looking the motor from the shaft end. (2) Measured at 1m and with tolerance of +3dB(A). (3) Approximate weight subject to changes after manufacturing process. (4) At 100% of full load.				These are average values based on tests with sinusoidal power supply, subject to the tolerances stipulated in NEMA MG-1.			
Rev.	Changes Summary			Performed	Checked	Date	
Performed by							
Checked by					Page	Revision	
Date	15/01/2024				1 / 3		

DATA SHEET

Three Phase Induction Motor - Squirrel Cage



Customer : _____

Brake information

Voltage: 525-575 V
Brake Torque: 1.63 kgfm

Rev.	Changes Summary	Performed	Checked	Date
Performed by				
Checked by			Page	Revision
Date	15/01/2024		2 / 3	

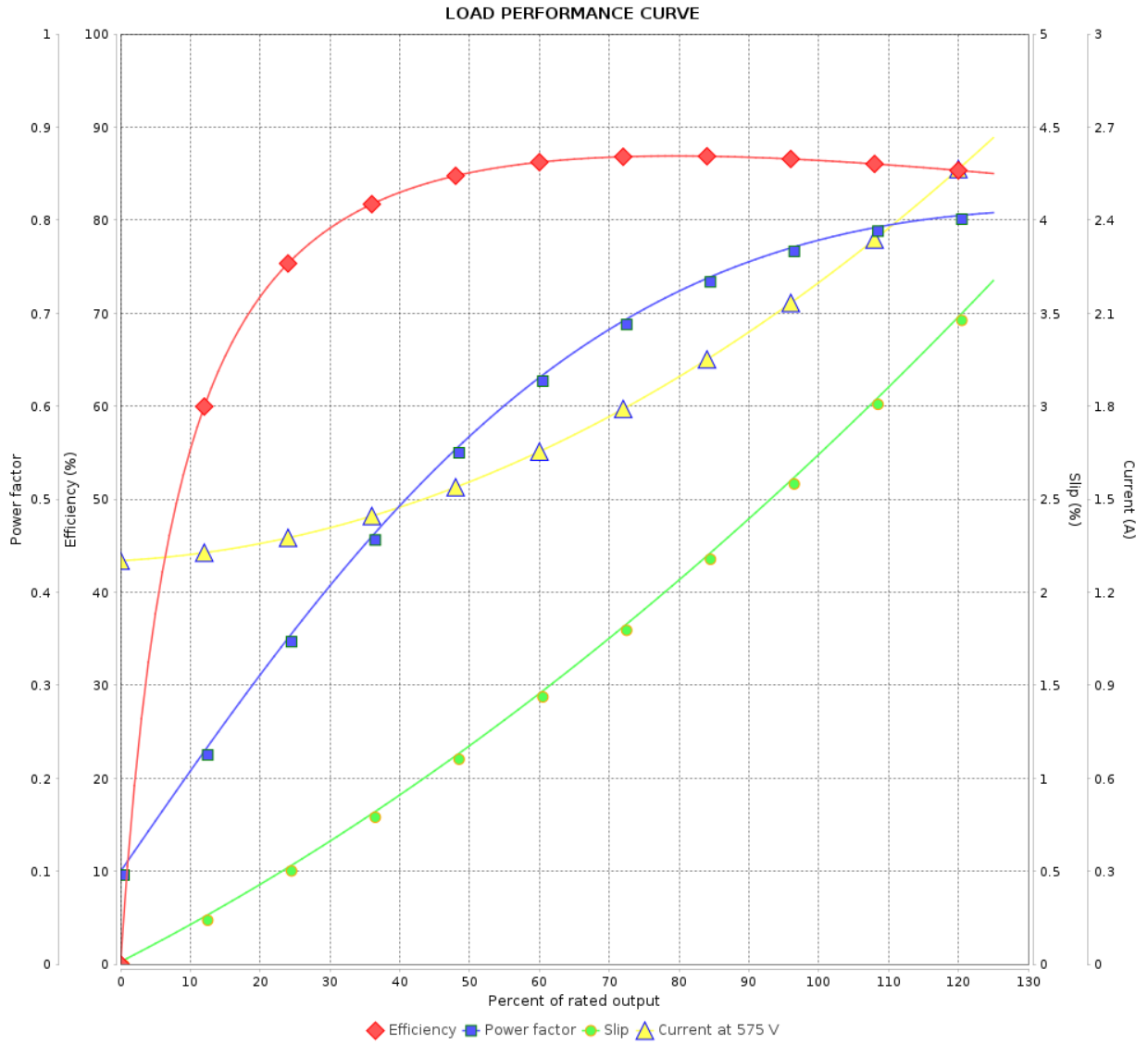
LOAD PERFORMANCE CURVE

Three Phase Induction Motor - Squirrel Cage



Customer : _____

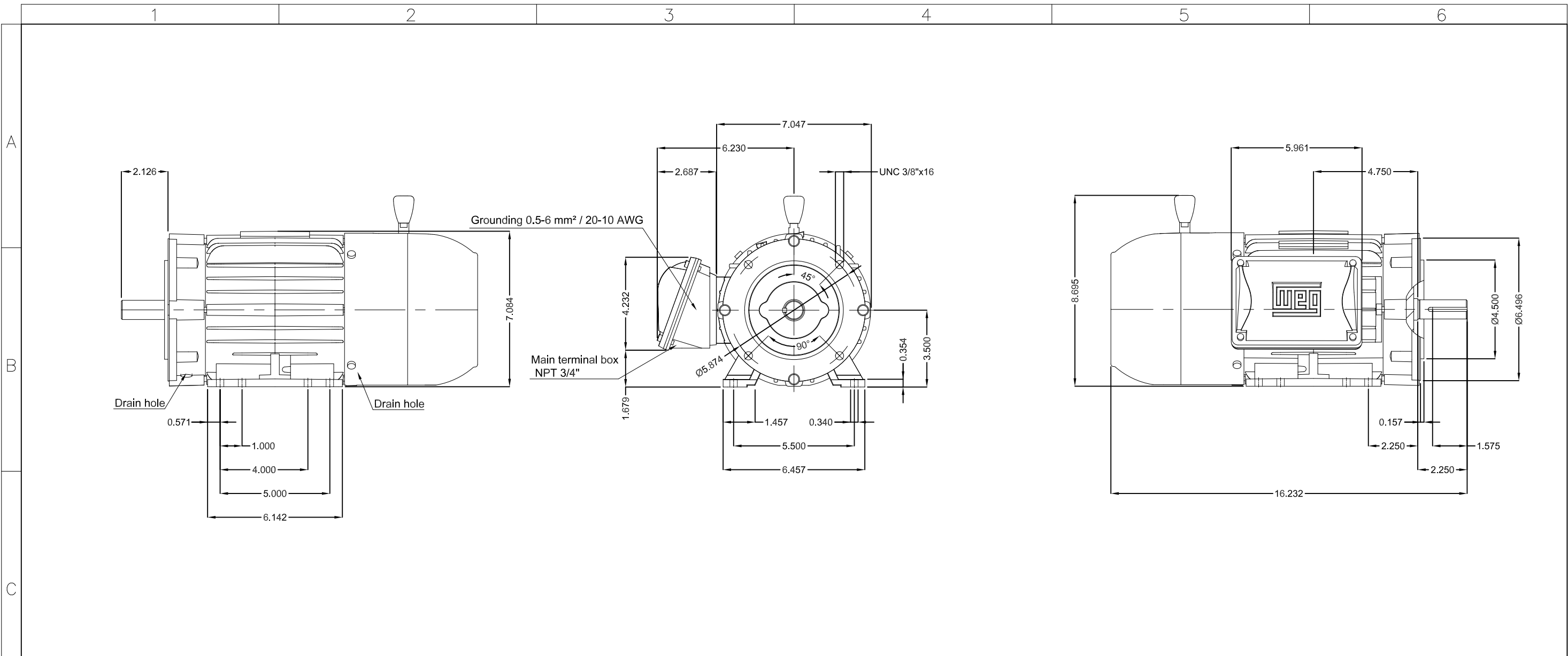
Product line : W22 Brake Motor NEMA Premium Efficiency Product code : 14199316
 Three-Phase



Performance : 575 V 60 Hz 4P

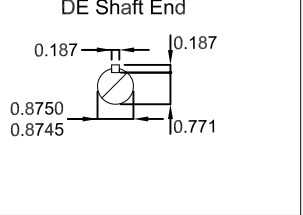
Rated current	: 2.23 A	Moment of inertia (J)	: 0.0066 kgm ²
LRC	: 8.3	Duty cycle	: Cont.(S1)
Rated torque	: 0.829 kgfm	Insulation class	: F
Locked rotor torque	: 270 %	Service factor	: 1.25
Breakdown torque	: 320 %	Temperature rise	: 80 K
Rated speed	: 1750 rpm	Design	: B

Rev.	Changes Summary	Performed	Checked	Date
Performed by			Page 3 / 3	Revision
Checked by				
Date	15/01/2024			



						2 HP 04 Poles 60 Hz						A

Brake voltage 525-575 V
 With brake 10 (16 Nm)
 Color RAL 5009
 Painting plan 207A
 Mounting NEMA F-1
 Mounting B34R(D)



ECM	LOC	SUMMARY OF MODIFICATIONS	EXECUTED	CHECKED	RELEASED	DATE	VER	
EXECUTED	HYBRISUSER	THREE PH. MOTOR W22 BRAKE MOTOR NEMA PREM. EFF. FRAME 143/5TC IP55 TEFC						
CHECKED								
RELEASED								
REL. DATE								
						HYBRISUSER 00		
			EXECUTED WDD		CHECKED 00		RELEASED /	
			EXECUTED SHEET		CHECKED /		RELEASED /	

