

DATA SHEET

Three Phase Induction Motor - Squirrel Cage



Customer :

Product line : Rolled Steel NEMA Premium Efficiency Three-Phase Product code : 14627833

| | | | |
|-----------------------|---------------------------|-----------------------------|------------------------|
| Frame | : 213/5TC | Locked rotor time | : 28s (cold) 16s (hot) |
| Output | : 10 HP (7.5 kW) | Temperature rise | : 80 K |
| Frequency | : 60 Hz | Duty cycle | : Cont.(S1) |
| Rated voltage | : 575 V | Ambient temperature | : -20°C to +40°C |
| Poles | : 2 | Altitude | : 1000 m.a.s.l. |
| Rated current | : 9.49 A | Protection degree | : IP55 |
| | : 7.5x(Code H) | Cooling method | : IC411 - TEFC |
| Rated speed | : 3530 rpm | Mounting | : F-1 |
| Rated torque | : 2.06 kgfm | Rotation ¹ | : Both (CW and CCW) |
| Insulation class | : F | Noise level ² | : 70.0 dB(A) |
| Service factor | : 1.15 | Starting method | : Direct On Line |
| Moment of inertia (J) | : 0.0303 kgm ² | Approx. weight ³ | : 62.1 kg |
| Design | : B | | |

| | | | | | |
|----------------|------|------|------|------------------|-----------|
| Output | 50% | 75% | 100% | Foundation loads | |
| Efficiency (%) | 89.5 | 90.2 | 90.2 | Max. traction | : 83 kgf |
| Power Factor | 0.75 | 0.84 | 0.88 | Max. compression | : 145 kgf |

Losses at normative operating points (speed;torque), in percentage of rated output power

| P1 (0,9;1,0) | P2 (0,5;1,0) | P3 (0,25;1,0) | P4 (0,9;0,5) | P5 (0,5;0,5) | P6 (0,5;0,25) | P7 (0,25;0,25) |
|--------------|--------------|---------------|--------------|--------------|---------------|----------------|
| 9.6 | 7.7 | 7.5 | 5.4 | 3.4 | 2.5 | 1.7 |

| | | | |
|----------------------|---|------------------|----------------------|
| | | <u>Drive end</u> | <u>Non drive end</u> |
| Bearing type | : | 6208 ZZ | 6206 ZZ |
| Sealing | : | V'Ring | Without Bearing Seal |
| Lubrication interval | : | - | - |
| Lubricant amount | : | - | - |
| Lubricant type | : | Mobil Polyrex EM | |

Notes

This revision replaces and cancel the previous one, which must be eliminated.

- (1) Looking the motor from the shaft end.
- (2) Measured at 1m and with tolerance of +3dB(A).
- (3) Approximate weight subject to changes after manufacturing process.
- (4) At 100% of full load.

These are average values based on tests with sinusoidal power supply, subject to the tolerances stipulated in NEMA MG-1.

| Rev. | Changes Summary | Performed | Checked | Date |
|--------------|-----------------|---------------|---------|----------|
| | | | | |
| Performed by | | Page 1 / 2 | | Revision |
| Checked by | | | | |
| Date | 11/06/2026 | | | |

LOAD PERFORMANCE CURVE

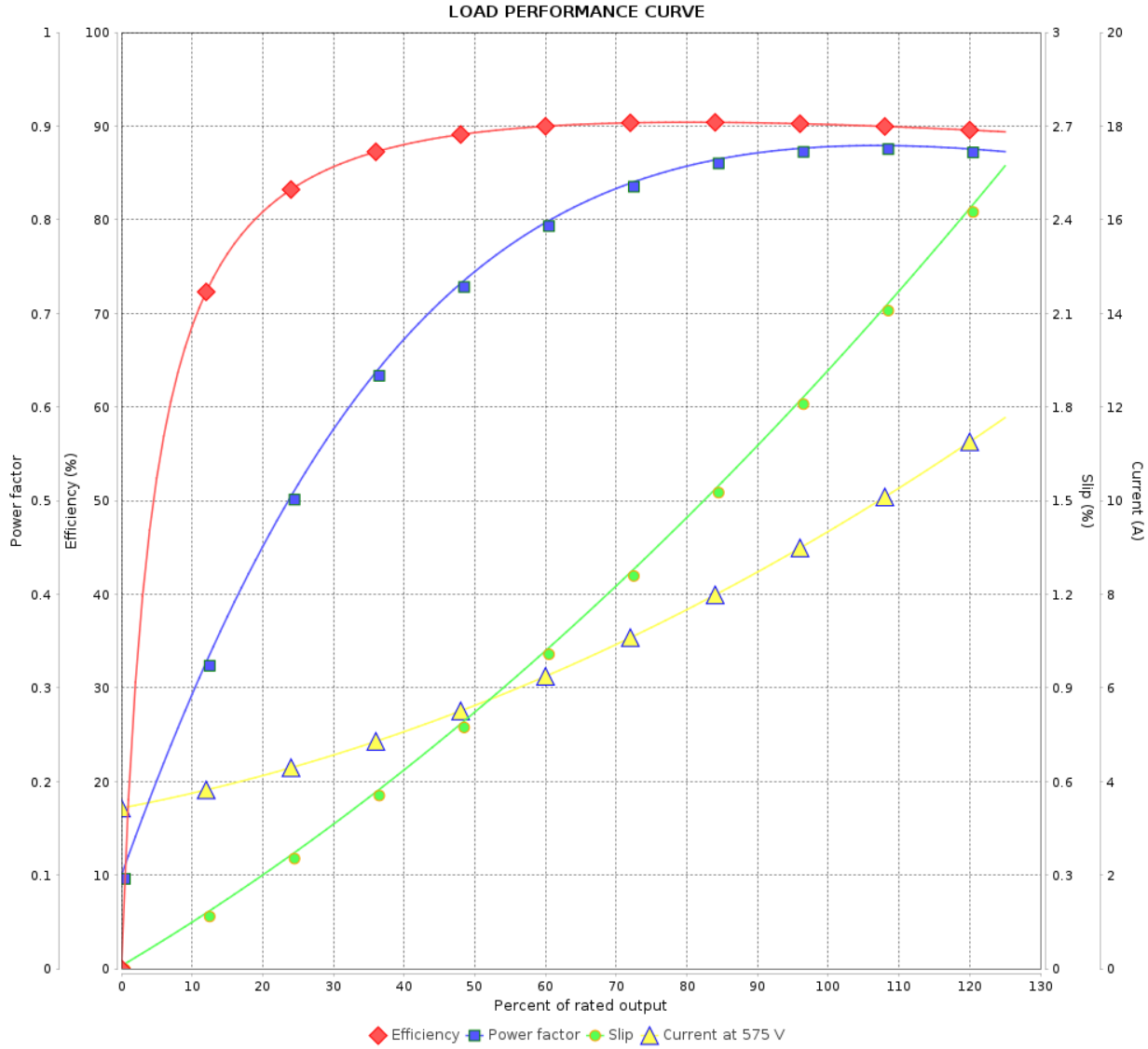
Three Phase Induction Motor - Squirrel Cage



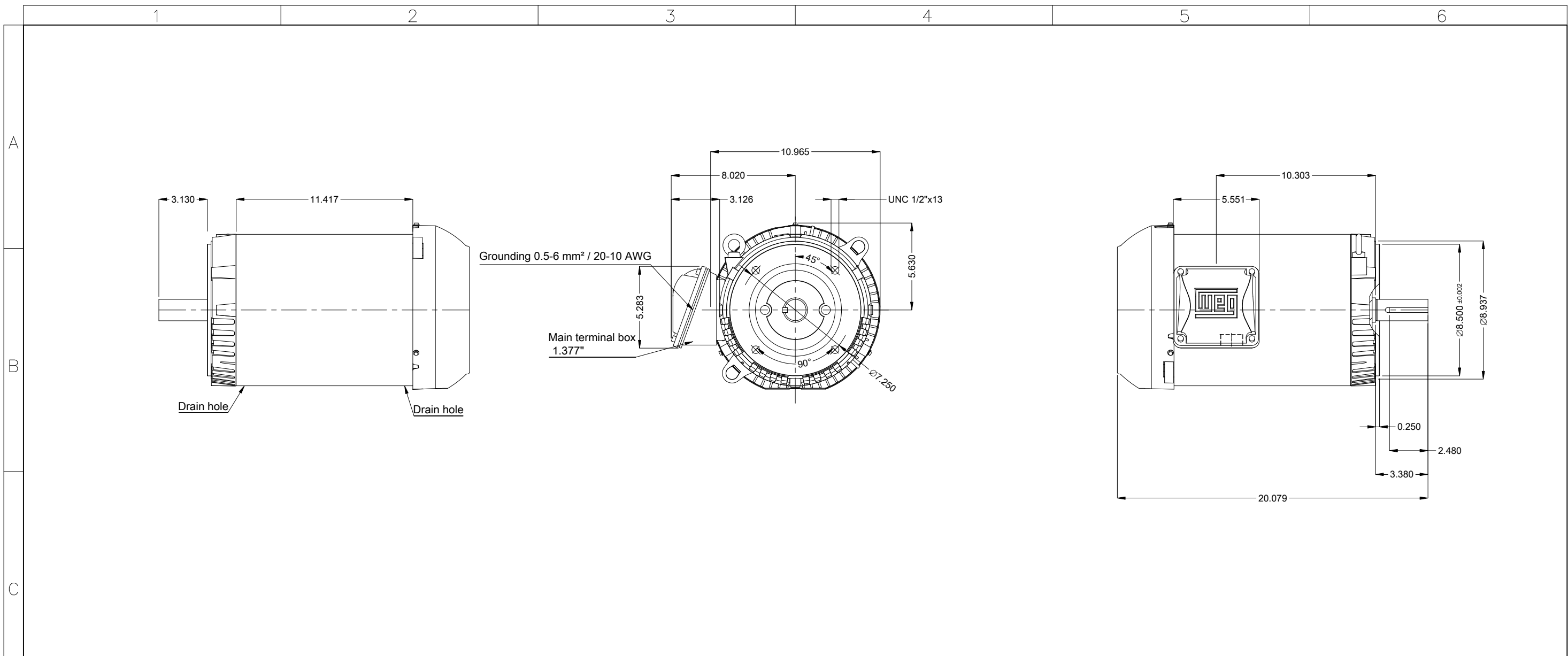
Customer : _____

Product line : Rolled Steel NEMA Premium
Efficiency Three-Phase

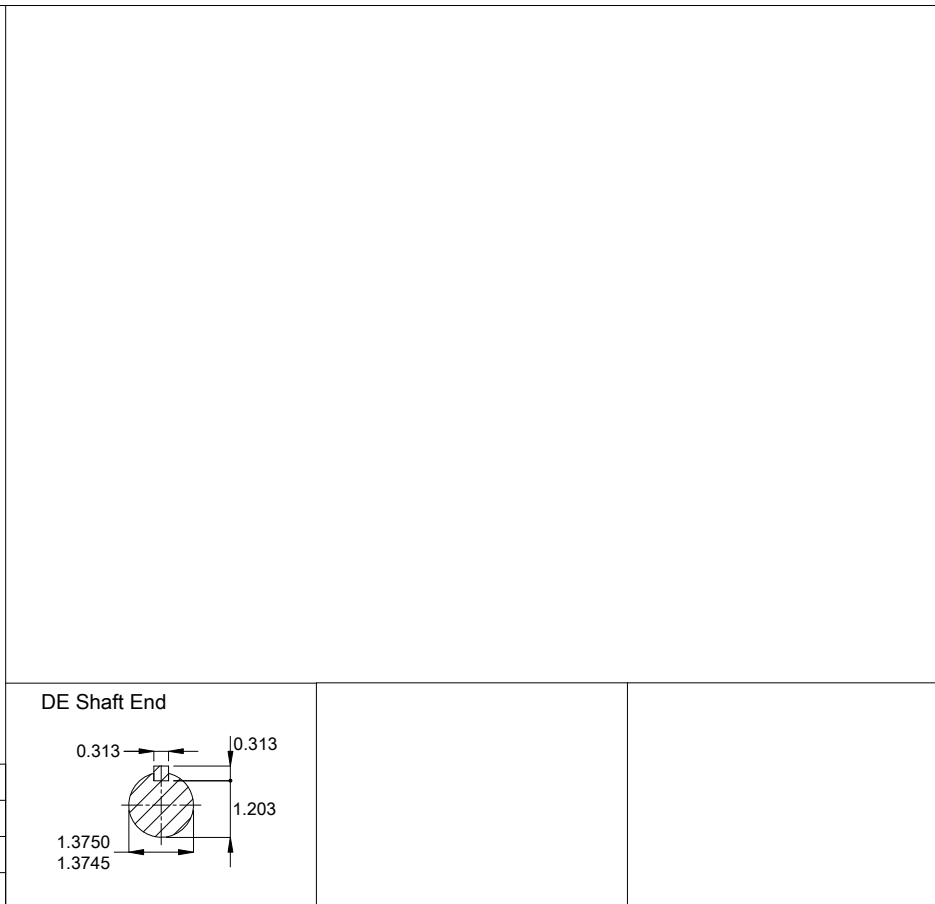
Product code : 14627833



| Rev. | Changes Summary | Performed | Checked | Date |
|--------------------|-----------------|-----------|---------------|----------|
| | | | | |
| Performed by | | | Page 2 / 2 | Revision |
| Checked by | | | | |
| Date 11/06/2026 | | | | |



| |
|-------------------------------|
| Color Munsell N 1 matte black |
| Painting plan 207N |
| Mounting MARKET F-1/B14R(D) |
| Mounting F-1/B14R(D) |



| | | | | | | | | | | | |
|----------------------|------------|--|--|--|--|--|----------|---------|----------|------|-----|
| 10 HP 02 Poles 60 Hz | | | | | | | | | | A | |
| Scale 2 : 13 | | | | | | | | | | | |
| HYBRISUSER | | | | | | | | | | 00 | |
| ECM | LOC | SUMMARY OF MODIFICATIONS | | | | | EXECUTED | CHECKED | RELEASED | DATE | VER |
| EXECUTED | HYBRISUSER | THREE PH. MOTOR ROLLED STEEL NEMA PREM. EFF. | | | | | PREVIEW | | | | |
| CHECKED | | FRAME 213/5TC IP55 TEFC | | | | | WDD | 00 | | | |
| RELEASED | | | | | | | SHEET | | 1 / 1 | | |
| REL. DATE | | | | | | | | | | | |