

DATA SHEET

Three Phase Induction Motor - Squirrel Cage



Customer :				
Product line		: Premium Efficiency Three-Phase	Product code :	15318677
Frame	: 56	Cooling method	: IC01 - ODP	
Insulation class	: F	Mounting	: F-1	
Duty cycle	: Cont.(S1)	Rotation ¹	: Both (CW and CCW)	
Ambient temperature	: -20°C to +40°C	Starting method	: Direct On Line	
Altitude	: 1000 m.a.s.l.	Approx. weight ³	: 12.3 kg	
Design	: A	Moment of inertia (J)	: 0.0035 kgm ²	
Output [HP]	1.5			
Poles	2			
Frequency [Hz]	60			
Rated voltage [V]	575			
Rated current [A]	1.48			
L. R. Amperes [A]	12.7			
LRC [A]	8.6x(Code K)			
No load current [A]	0.647			
Rated speed [RPM]	3510			
Slip [%]	2.50			
Rated torque [kgfm]	0.310			
Locked rotor torque [%]	210			
Breakdown torque [%]	330			
Service factor	1.15			
Temperature rise	80 K			
Locked rotor time	36s (cold) 20s (hot)			
Noise level ²	62.0 dB(A)			
Efficiency (%)	25%			
	50%	81.5		
	75%	84.0		
	100%	84.0		
Power Factor	25%			
	50%	0.73		
	75%	0.83		
	100%	0.89		
Bearing type	: Drive end 6204 ZZ Non drive end 6202 ZZ	Foundation loads		
Sealing	: Without Without Bearing Seal Bearing Seal	Max. traction : 26 kgf		
		Max. compression : 39 kgf		
Lubrication interval	: - -			
Lubricant amount	: - -			
Lubricant type	: Mobil Polyrex EM			
Notes				
This revision replaces and cancel the previous one, which must be eliminated. (1) Looking the motor from the shaft end. (2) Measured at 1m and with tolerance of +3dB(A). (3) Approximate weight subject to changes after manufacturing process. (4) At 100% of full load.		These are average values based on tests with sinusoidal power supply, subject to the tolerances stipulated in NEMA MG-1.		
Rev.	Changes Summary		Performed	Checked
Performed by				
Checked by			Page	Revision
Date	11/05/2022		1 / 2	

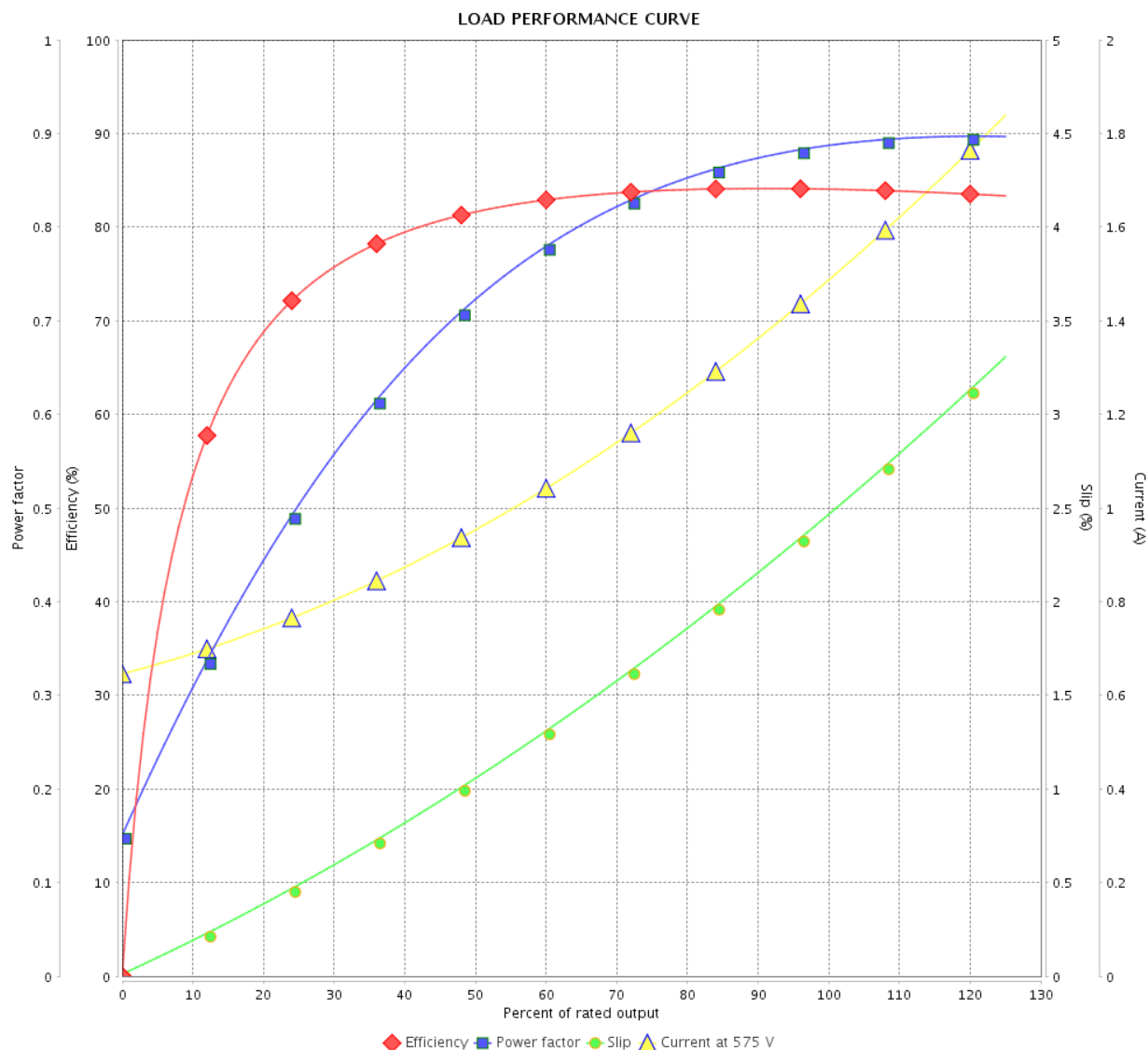
LOAD PERFORMANCE CURVE

Three Phase Induction Motor - Squirrel Cage



Customer :

Product line : Premium Efficiency Three-Phase Product code : 15318677

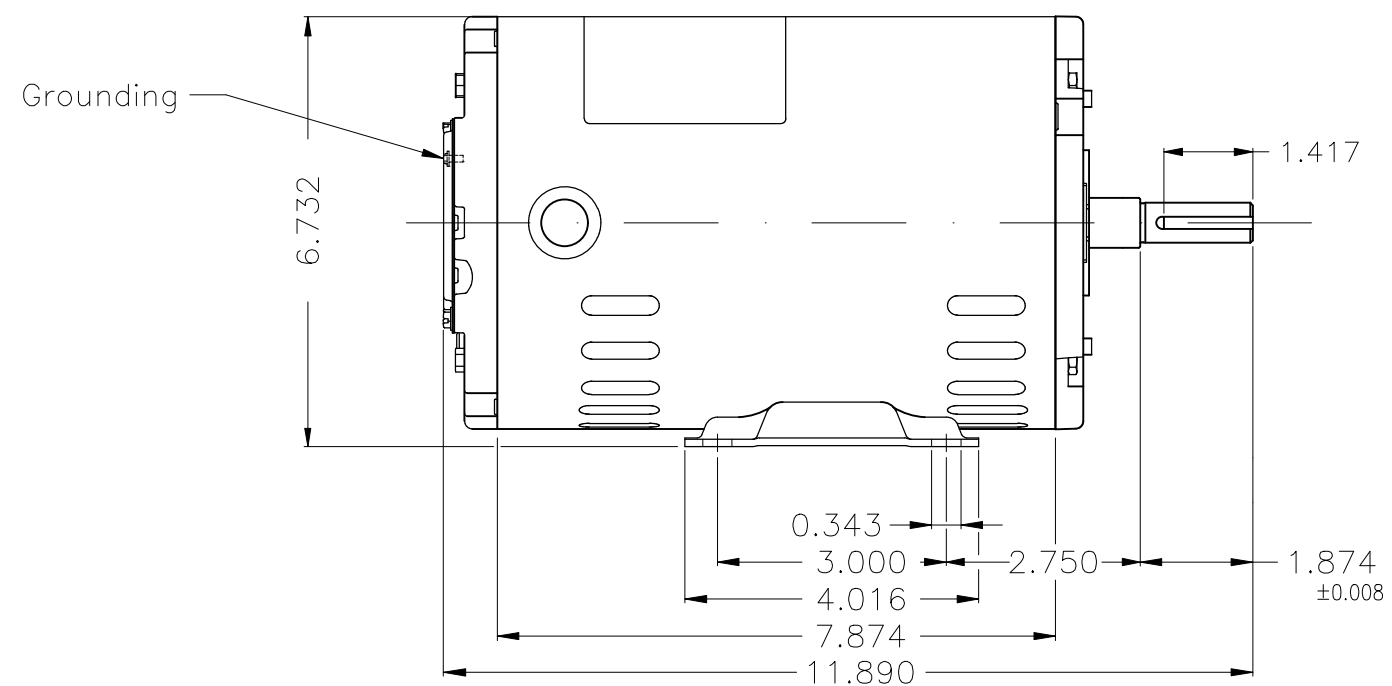
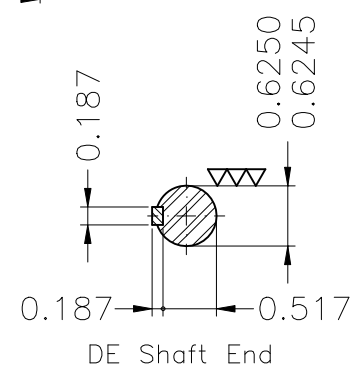
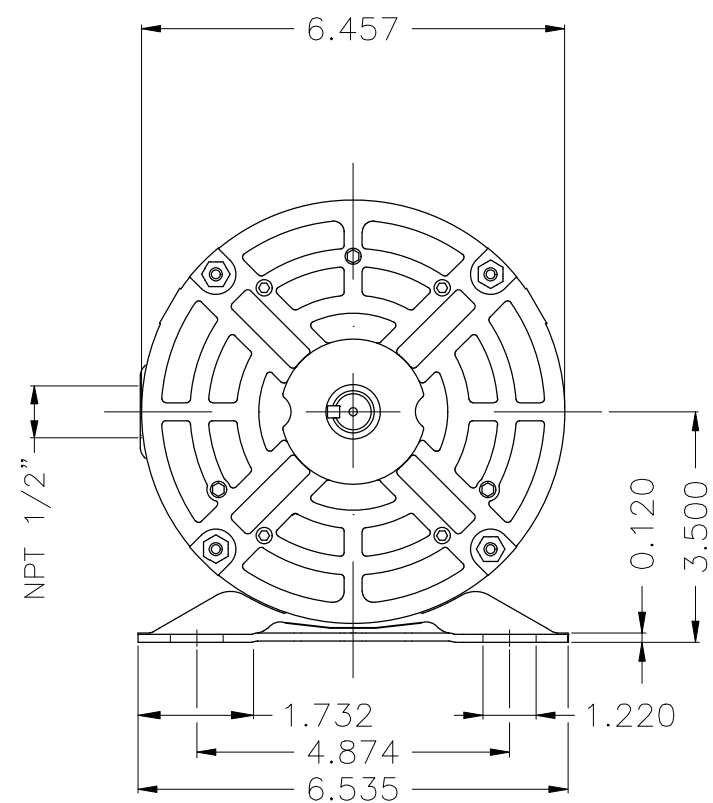


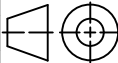

Performance : 575 V 60 Hz 2P

Rated current : 1.48 A
 LRC : 8.6
 Rated torque : 0.310 kgfm
 Locked rotor torque : 210 %
 Breakdown torque : 330 %
 Rated speed : 3510 rpm

Moment of inertia (J) : 0.0035 kgm²
 Duty cycle : Cont.(S1)
 Insulation class : F
 Service factor : 1.15
 Temperature rise : 80 K
 Design : A

Rev.	Changes Summary		Performed	Checked	Date
Performed by				Page 2 / 2Revision	
Checked by					
Date	11/05/2022				



Color Munsell N 1 matte black									
Painting plan 207N									
Mounting F-1/B3R(D)									
						HYBRISUSER			00
ECM	LOC	SUMMARY OF MODIFICATIONS				EXECUTED	CHECKED	RELEASED	DATE VER
EXECUTED	HYBRISUSER		THREE PH. MOTOR ROLLED STEEL PREM. EFF. FRAME 56 IP21 ODP			PREVIEW WDD 00			
CHECKED									
RELEASED									
REL. DATE		WMO	Jaragua do Sul	Product Engineering	SHEET	1 / 1			