

DATA SHEET

Three Phase Induction Motor - Squirrel Cage



Customer :

Product line : Jet Pump - J type Standard Efficiency Three-Phase Product code : 14151171

Frame	: 56J	Cooling method	: IC411 - TEFC
Insulation class	: F	Mounting	: F-1
Duty cycle	: Cont.(S1)	Rotation ¹	: CCW
Ambient temperature	: -20°C to +40°C	Starting method	: Direct On Line
Altitude	: 1000 m.a.s.l.	Approx. weight ²	: 9.5 kg
Protection degree	: IP55	Moment of inertia (J)	: 0.0025 kgm ²

Output [HP]	0.5	0.5	0.5
Poles	4	4	4
Frequency [Hz]	60	50	50
Rated voltage [V]	208-230/460	190/380	220/415
Rated current [A]	1.91-1.72/0.862	1.90/0.950	1.81/0.962
L. R. Amperes [A]	13.3-12.1/6.03	11.0/5.51	11.4/6.06
LRC [A]	7.0x(Code L)	5.8x(Code J)	6.3x(Code K)
No load current [A]	1.03-1.20/0.600	1.24/0.618	1.39/0.737
Rated speed [RPM]	1760	1445	1460
Slip [%]	2.22	3.67	2.67
Rated torque [kgfm]	0.206	0.251	0.249
Locked rotor torque [%]	240	180	220
Breakdown torque [%]	300	250	310
Service factor		1.15	1.15
Temperature rise	80 K	80 K	80 K
Locked rotor time	36s (cold) 20s (hot)	0s (cold) 0s (hot)	0s (cold) 0s (hot)
Noise level ²	52.0 dB(A)	49.0 dB(A)	49.0 dB(A)
Efficiency (%)	25%		
	50%	68.0	70.7
	75%	74.0	75.0
	100%	77.0	75.9
Power Factor	25%		
	50%	0.48	0.56
	75%	0.61	0.69
	100%	0.70	0.78

Bearing type	: Drive end 6203 2RS Non drive end 6202 2RS	Foundation loads	
Sealing	: V'Ring V'Ring	Max. traction	: 20 kgf
Lubrication interval	: - -	Max. compression	: 29 kgf
Lubricant amount	: - -		
Lubricant type	: Mobil Polyrex EM		

Notes
USABLE @208V SF 1.00

This revision replaces and cancel the previous one, which must be eliminated.

- (1) Looking the motor from the shaft end.
- (2) Measured at 1m and with tolerance of +3dB(A).
- (3) Approximate weight subject to changes after manufacturing process.
- (4) At 100% of full load.

These are average values based on tests with sinusoidal power supply, subject to the tolerances stipulated in NEMA MG-1.

Rev.	Changes Summary	Performed	Checked	Date
Performed by				
Checked by				
Date	11/05/2022			

Page 1 / 4
Revision

LOAD PERFORMANCE CURVE

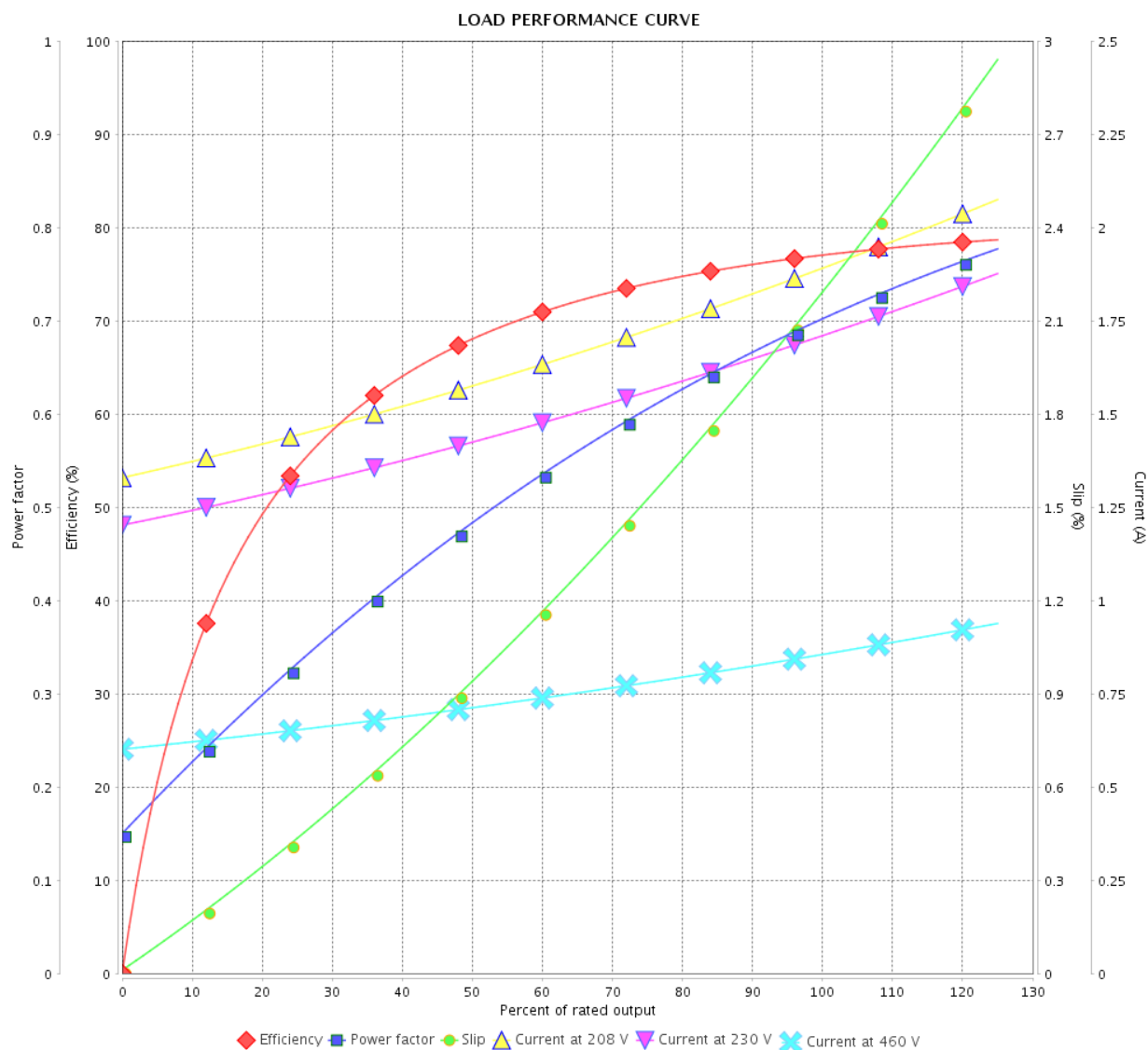
Three Phase Induction Motor - Squirrel Cage



Customer :

Product line : Jet Pump - J type Standard
Efficiency Three-Phase

Product code : 14151171



Performance : 208-230/460 V 60 Hz 4P

Rated current : 1.91-1.72/0.862 A
 LRC : 7.0
 Rated torque : 0.206 kgfm
 Locked rotor torque : 240 %
 Breakdown torque : 300 %
 Rated speed : 1760 rpm

Moment of inertia (J) : 0.0025 kgm²
 Duty cycle : Cont.(S1)
 Insulation class : F
 Service factor :
 Temperature rise : 80 K

Rev.	Changes Summary	Performed	Checked	Date
Performed by				Page 2 / 4
Checked by				
Date				
	11/05/2022			Revision

LOAD PERFORMANCE CURVE

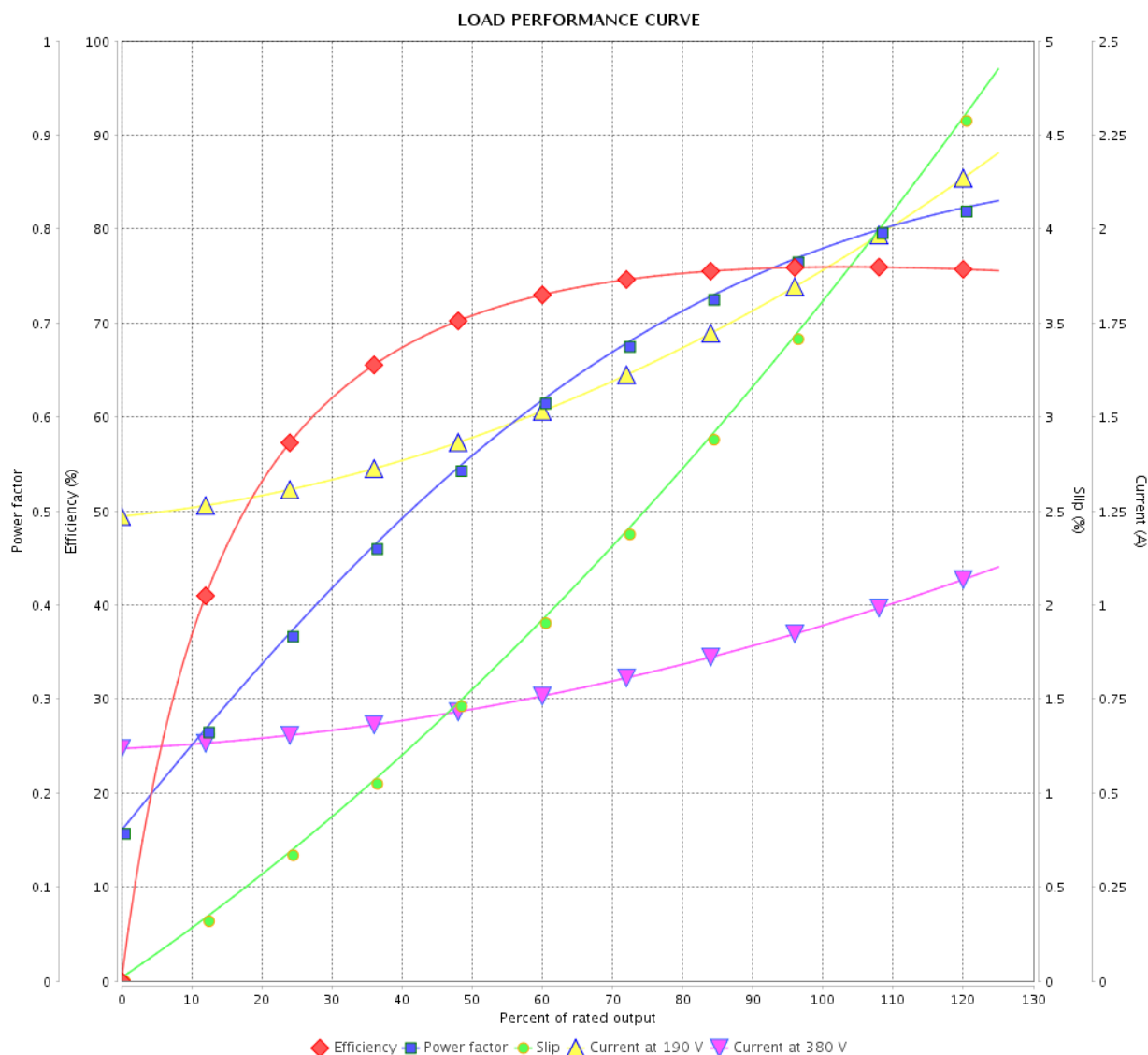
Three Phase Induction Motor - Squirrel Cage



Customer :

Product line : Jet Pump - J type Standard
Efficiency Three-Phase

Product code : 14151171



Performance : 190/380 V 50 Hz 4P

Rated current : 1.90/0.950 A
LRC : 5.8
Rated torque : 0.251 kgfm
Locked rotor torque : 180 %
Breakdown torque : 250 %
Rated speed : 1445 rpm

Moment of inertia (J) : 0.0025 kgm²
Duty cycle : Cont.(S1)
Insulation class : F
Service factor : 1.15
Temperature rise : 80 K

Rev.	Changes Summary	Performed	Checked	Date
Performed by		Page 3 / 4		
Checked by				
Date	11/05/2022			
		Revision		

LOAD PERFORMANCE CURVE

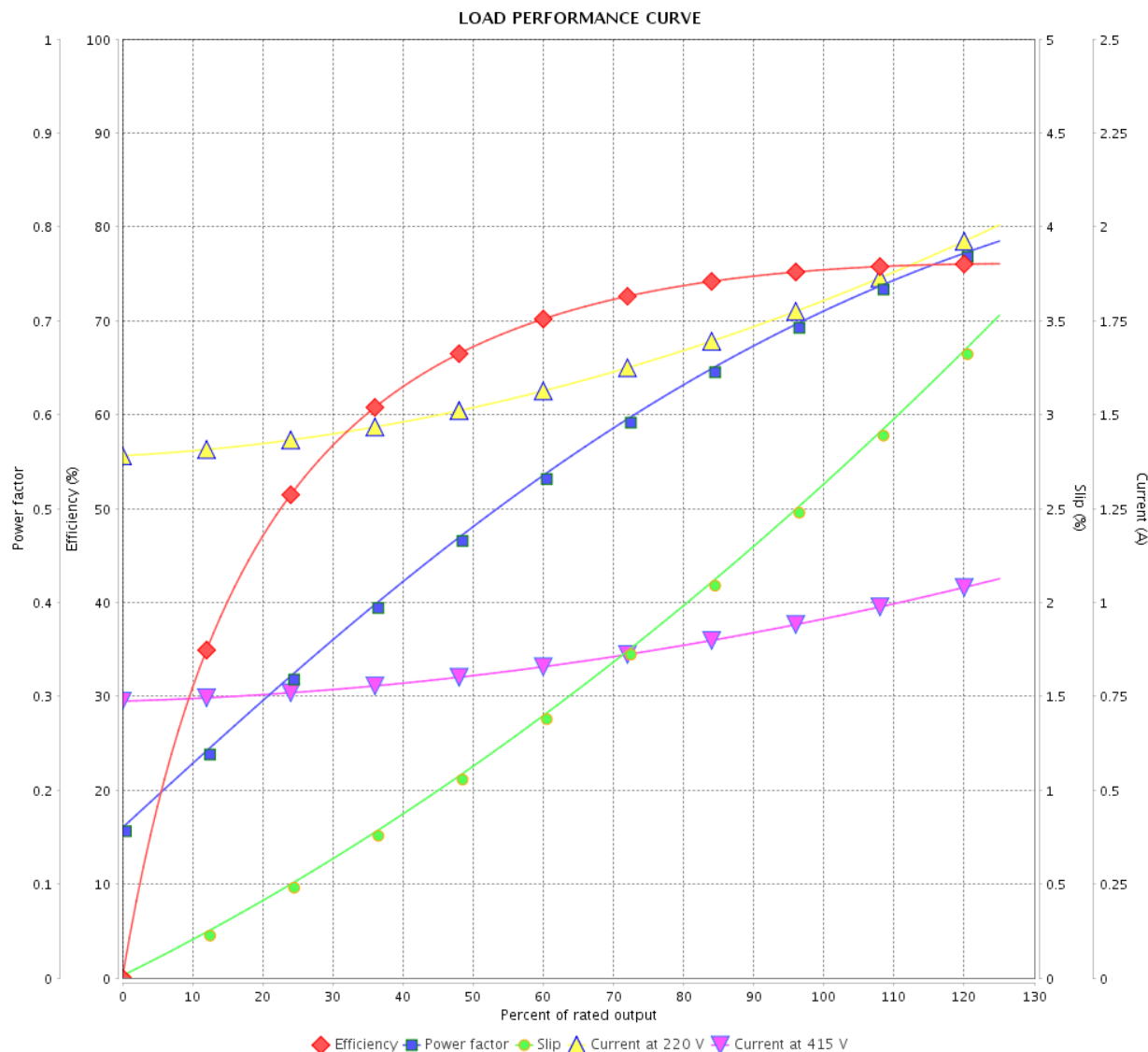
Three Phase Induction Motor - Squirrel Cage



Customer :

Product line : Jet Pump - J type Standard
Efficiency Three-Phase

Product code : 14151171

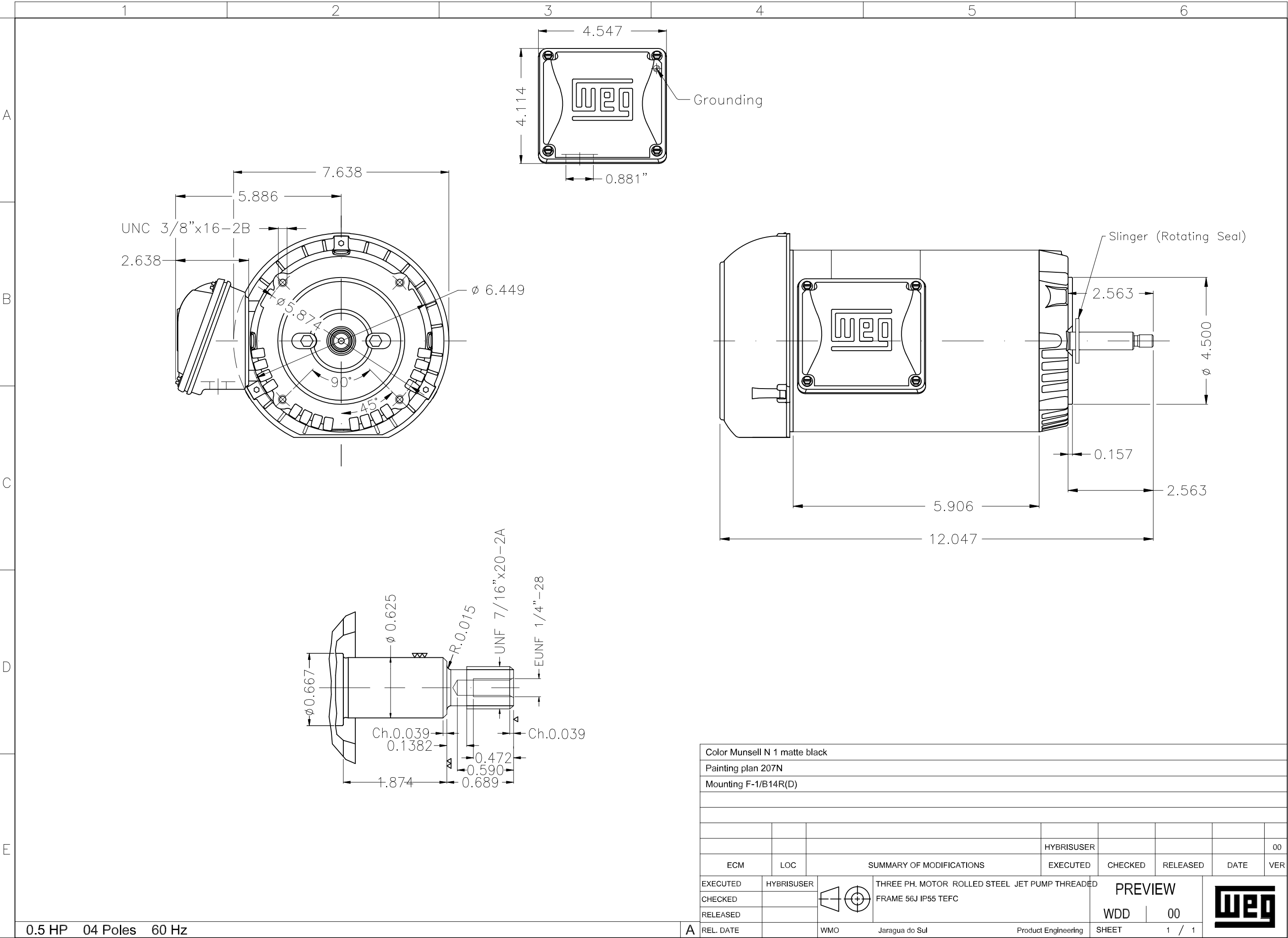


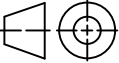

Performance : 220/415 V 50 Hz 4P

Rated current : 1.81/0.962 A
LRC : 6.3
Rated torque : 0.249 kgfm
Locked rotor torque : 220 %
Breakdown torque : 310 %
Rated speed : 1460 rpm

Moment of inertia (J) : 0.0025 kgm²
Duty cycle : Cont.(S1)
Insulation class : F
Service factor : 1.15
Temperature rise : 80 K

Rev.	Changes Summary	Performed	Checked	Date
Performed by		Page 4 / 4Revision		
Checked by				
Date	11/05/2022			



Color Munsell N 1 matte black										
Painting plan 207N										
Mounting F-1/B14R(D)										
						HYBRISUSER			00	
ECM	LOC	SUMMARY OF MODIFICATIONS				EXECUTED	CHECKED	RELEASED	DATE VER	
EXECUTED	HYBRISUSER	 THREE PH. MOTOR ROLLED STEEL JET PUMP THREADED FRAME 56J IP55 TEFC				PREVIEW WDD 00 SHEET 1 / 1				
CHECKED										
RELEASED										
REL. DATE										
		WMO	Jaragua do Sul	Product Engineering						