

# DATA SHEET



## Three Phase Induction Motor - Squirrel Cage

Customer :						
Product line : W22 Brake Motor NEMA Premium Efficiency Three-Phase Product code : 14103840						
Frame	: 143/5T	Locked rotor time	: 18s (cold) 10s (hot)			
Output	: 2 HP (1.5 kW)	Temperature rise	: 80 K			
Poles	: 4	Duty cycle	: Cont.(S1)			
Frequency	: 60 Hz	Ambient temperature	: -20°C to +40°C			
Rated voltage	: 575 V	Altitude	: 1000 m.a.s.l.			
Rated current	: 2.23 A	Protection degree	: IP55			
L. R. Amperes	: 18.5 A	Cooling method	: IC411 - TEFC			
LRC	: 8.3x(Code L)	Mounting	: F-1			
No load current	: 1.30 A	Rotation <sup>1</sup>	: Both (CW and CCW)			
Rated speed	: 1750 rpm	Noise level <sup>2</sup>	: 51.0 dB(A)			
Slip	: 2.78 %	Starting method	: Direct On Line			
Rated torque	: 0.829 kgfm	Approx. weight <sup>3</sup>	: 27.1 kg			
Locked rotor torque	: 270 %					
Breakdown torque	: 320 %					
Insulation class	: F					
Service factor	: 1.25					
Moment of inertia (J)	: 0.0066 kgm <sup>2</sup>					
Design	: B					
Output	50%	75%	100%	Foundation loads		
Efficiency (%)	85.5	86.5	86.5	Max. traction	: 62 kgf	
Power Factor	0.57	0.70	0.78	Max. compression	: 89 kgf	
Losses at normative operating points (speed;torque), in percentage of rated output power						
P1 (0,9;1,0)	P2 (0,5;1,0)	P3 (0,25;1,0)	P4 (0,9;0,5)	P5 (0,5;0,5)	P6 (0,5;0,25)	P7 (0,25;0,25)
15.0	12.8	12.1	8.4	6.0	4.7	3.5
			<u>Drive end</u>	<u>Non drive end</u>		
Bearing type	:	6205 ZZ	6204 ZZ			
Sealing	:	V'Ring	Lip Seal			
Lubrication interval	:	-	-			
Lubricant amount	:	-	-			
Lubricant type	:	Mobil Polyrex EM				
Notes:						
This revision replaces and cancel the previous one, which must be eliminated. (1) Looking the motor from the shaft end. (2) Measured at 1m and with tolerance of +3dB(A). (3) Approximate weight subject to changes after manufacturing process. (4) At 100% of full load.				These are average values based on tests with sinusoidal power supply, subject to the tolerances stipulated in NEMA MG-1.		
Rev.	Changes Summary			Performed	Checked	Date
Performed by						
Checked by					Page	Revision
Date	15/01/2024				1 / 3	

# DATA SHEET

## Three Phase Induction Motor - Squirrel Cage



Customer : \_\_\_\_\_

### Brake information

Voltage: 525-575 V  
Brake Torque: 1.63 kgfm

Rev.	Changes Summary	Performed	Checked	Date
Performed by				
Checked by			Page	Revision
Date	15/01/2024		2 / 3	

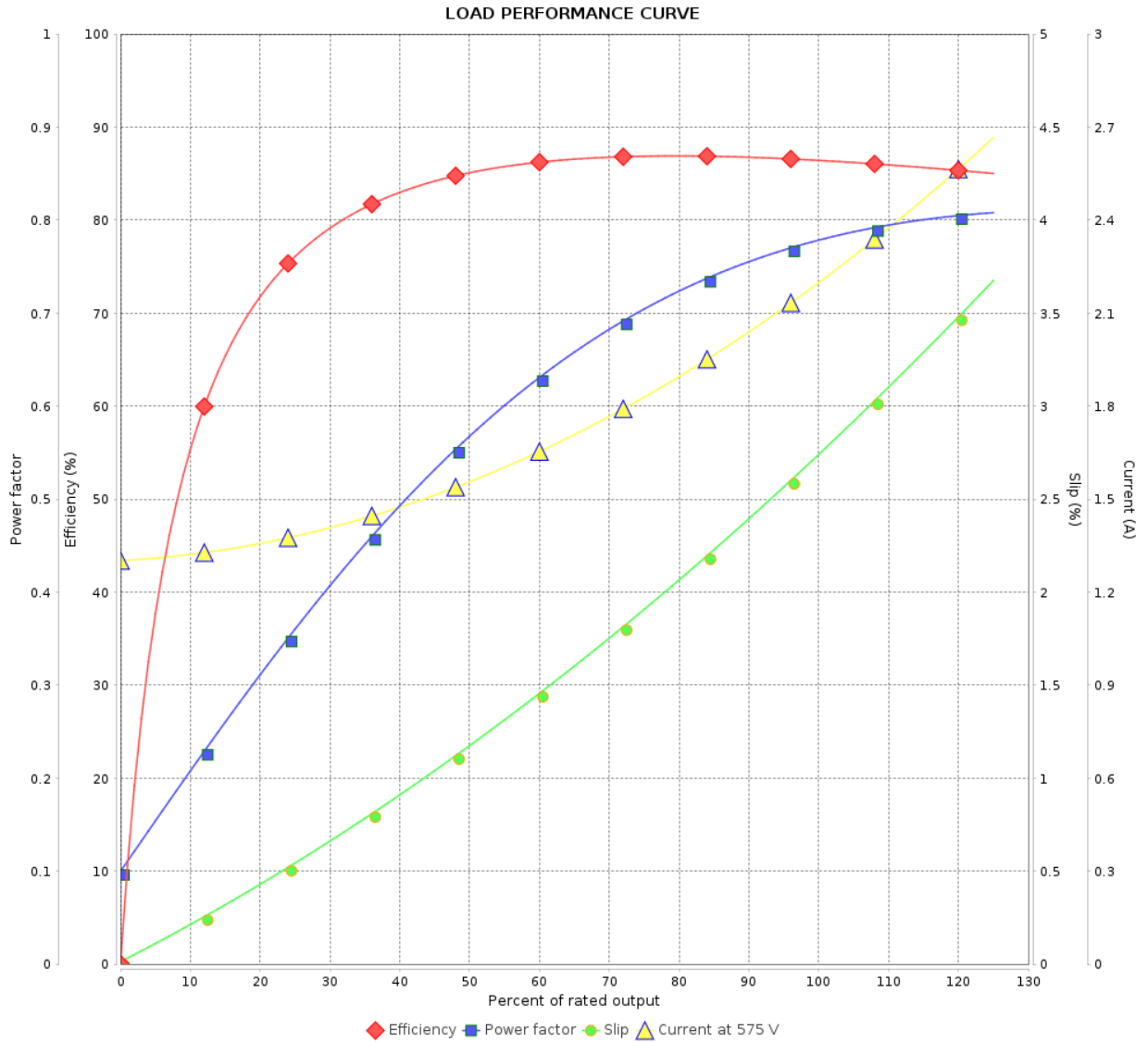
# LOAD PERFORMANCE CURVE

## Three Phase Induction Motor - Squirrel Cage



Customer :

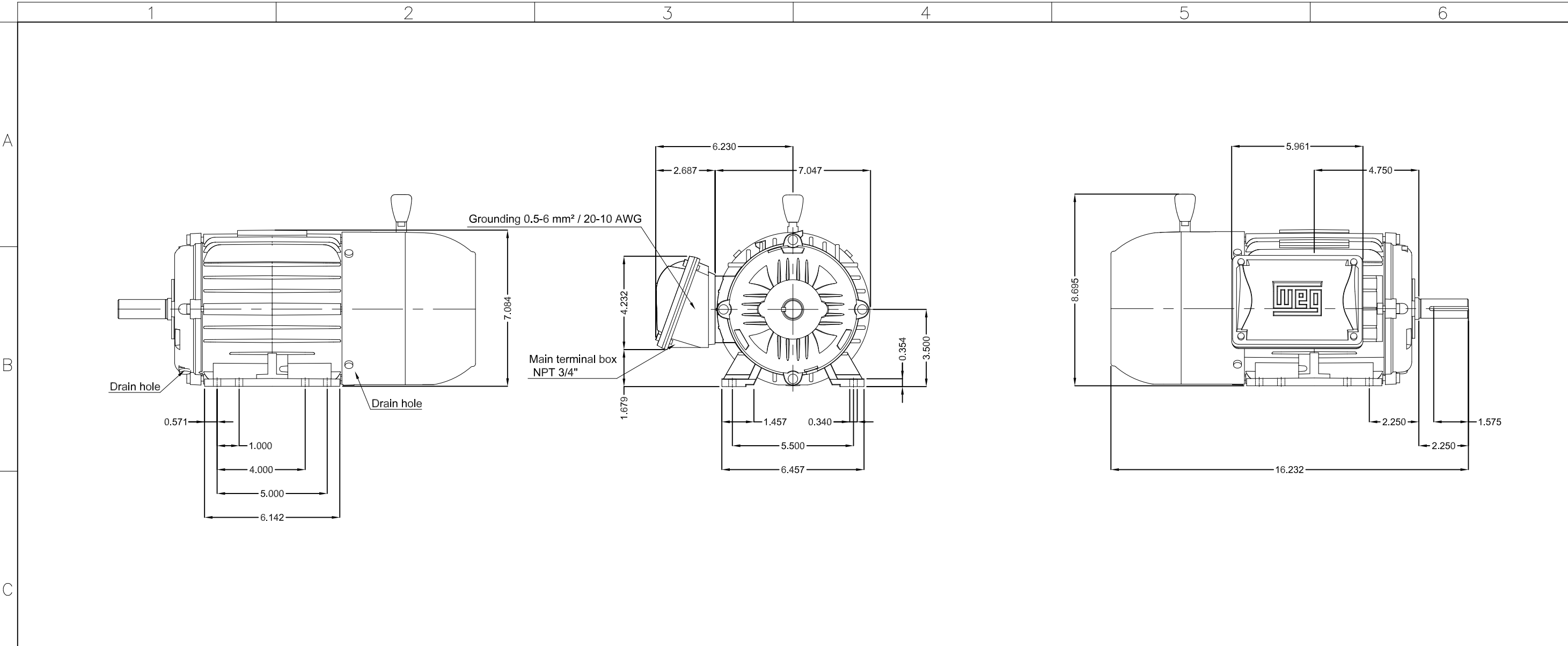
Product line : W22 Brake Motor NEMA Premium Efficiency Product code : 14103840  
 Three-Phase



Performance : 575 V 60 Hz 4P

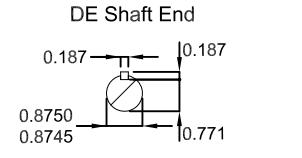
Rated current	: 2.23 A	Moment of inertia (J)	: 0.0066 kgm <sup>2</sup>
LRC	: 8.3	Duty cycle	: Cont.(S1)
Rated torque	: 0.829 kgfm	Insulation class	: F
Locked rotor torque	: 270 %	Service factor	: 1.25
Breakdown torque	: 320 %	Temperature rise	: 80 K
Rated speed	: 1750 rpm	Design	: B

Rev.	Changes Summary	Performed	Checked	Date
Performed by				
Checked by			Page	Revision
Date	15/01/2024		3 / 3	



		<p>2 HP 04 Poles 60 Hz</p>
--	--	----------------------------

Brake voltage 525-575 V
With brake 10 (16 Nm)
Color RAL 5009
Painting plan 207A
Mounting NEMA F-1
Mounting B3R(D)



ECM	LOC	SUMMARY OF MODIFICATIONS	HYBRISUSER	EXECUTED	CHECKED	RELEASED	DATE	VER
EXECUTED	HYBRISUSER	THREE PH. MOTOR W22 BRAKE MOTOR NEMA PREM. EFF.						00
CHECKED		FRAME 143/5T IP55 TEFC						
RELEASED								
REL. DATE								

**PREVIEW**  
WDD 00  
SHEET /