

DATA SHEET

Single Phase Induction Motor - Squirrel Cage



Customer :

Product line : W22 JM Pump Single-Phase Product code : 14076630

Frame	: 213/5JM	Locked rotor time	: 12s (cold) 7s (hot)
Output	: 7.5 HP (5.5 kW)	Temperature rise	: 80 K
Poles	: 2	Duty cycle	: Cont.(S1)
Frequency	: 60 Hz	Ambient temperature	: -20°C to +40°C
Rated voltage	: 208-230 V	Altitude	: 1000 m.a.s.l.
Rated current	: 30.5-28.3 A	Protection degree	: IP55
L. R. Amperes	: 220-204 A	Cooling method	: IC411 - TEFC
LRC	: 7.2x(Code G)	Mounting	: F-1
No load current	: 5.69-6.60 A	Rotation ¹	: Both (CW and CCW)
Rated speed	: 3510 rpm	Noise level ²	: 72.0 dB(A)
Slip	: 2.50 %	Starting method	: Direct On Line
Rated torque	: 1.55 kgfm	Approx. weight ³	: 76.2 kg
Locked rotor torque	: 280 %		
Breakdown torque	: 290 %		
Insulation class	: F		
Service factor	: 1.15		
Moment of inertia (J)	: 0.0234 kgm ²		

Output	50%	75%	100%	Foundation loads	
Efficiency (%)	78.5	84.0	85.5	Max. traction	: 45 kgf
Power Factor	0.99	0.99	0.99	Max. compression	: 121 kgf

		<u>Drive end</u>	<u>Non drive end</u>
Bearing type	:	6309 ZZ C3	6206 ZZ
Sealing	:	V'Ring	V'Ring
Lubrication interval	:	-	-
Lubricant amount	:	-	-
Lubricant type	:	Mobil Polyrex EM	

Notes

This revision replaces and cancel the previous one, which must be eliminated.

- (1) Looking the motor from the shaft end.
- (2) Measured at 1m and with tolerance of +3dB(A).
- (3) Approximate weight subject to changes after manufacturing process.
- (4) At 100% of full load.

These are average values based on tests with sinusoidal power supply, subject to the tolerances stipulated in NEMA MG-1.

Rev.	Changes Summary	Performed	Checked	Date
Performed by		Page 1 / 2 Revision		
Checked by				
Date	27/10/2024			

LOAD PERFORMANCE CURVE

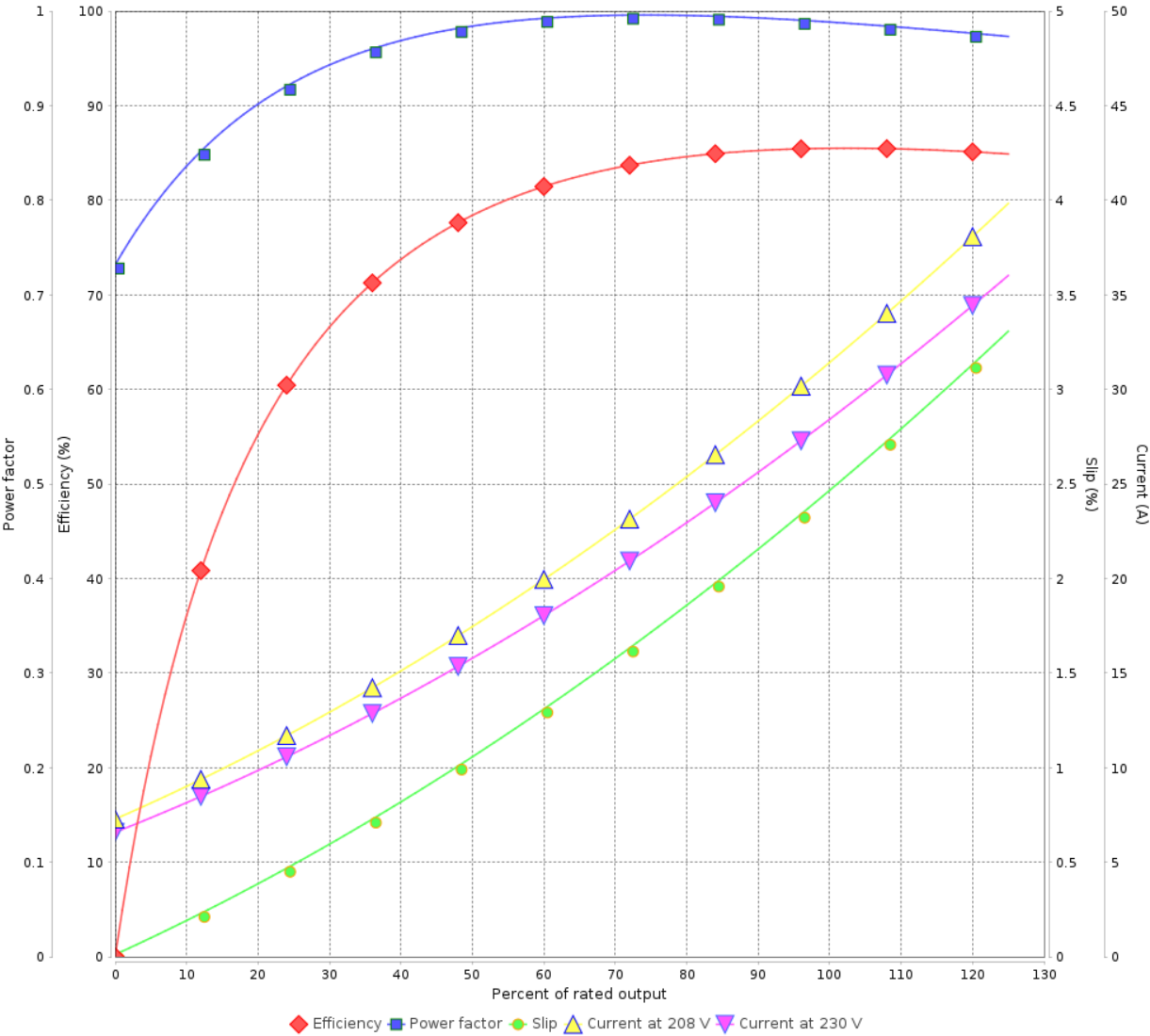
Single Phase Induction Motor - Squirrel Cage



Customer :

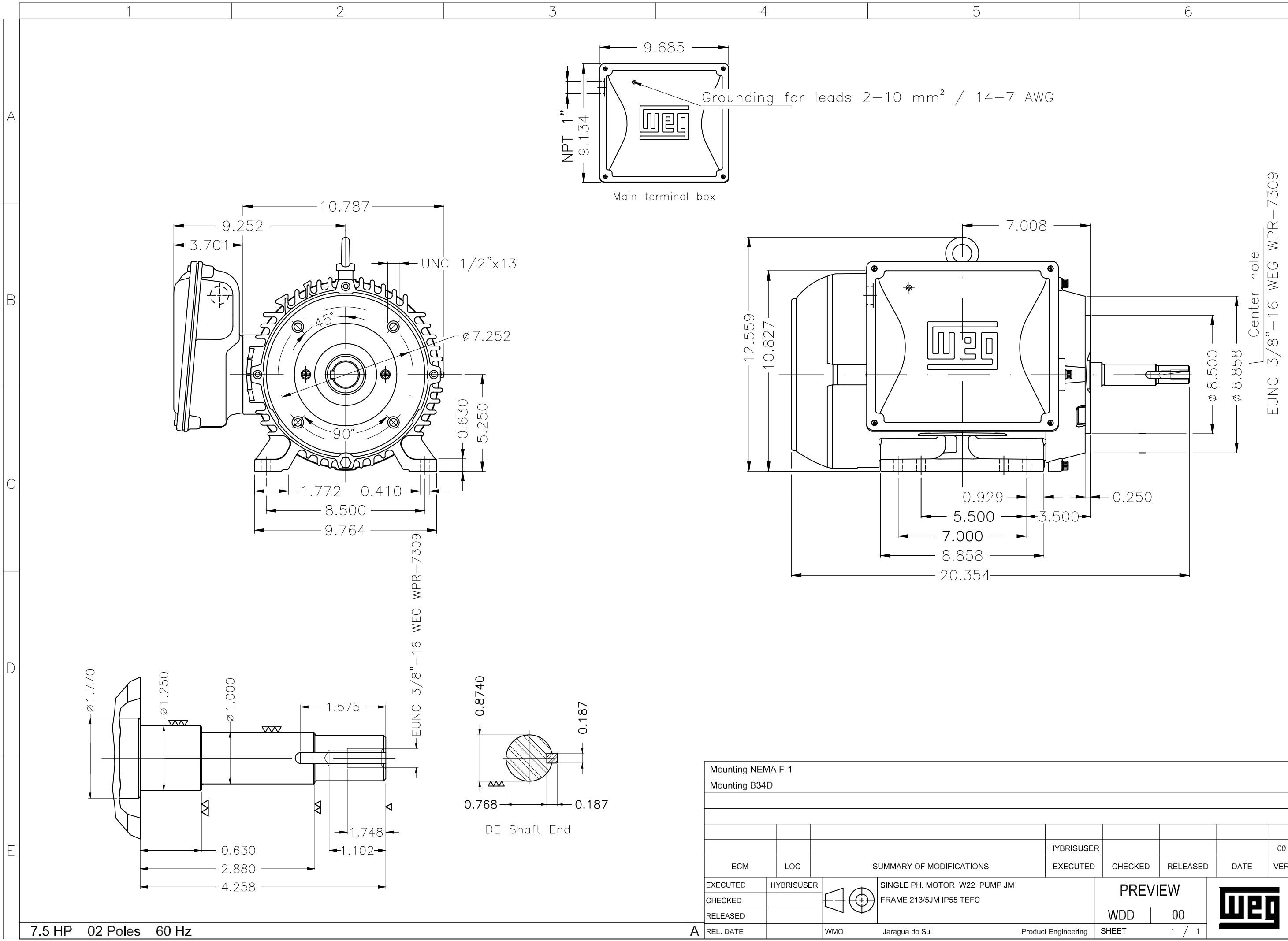
Product line : W22 JM Pump Single-Phase Product code : 14076630

LOAD PERFORMANCE CURVE



Performance : 208-230 V 60 Hz 2P			
Rated current	: 30.5-28.3 A	Moment of inertia (J)	: 0.0234 kgm ²
LRC	: 7.2	Duty cycle	: Cont.(S1)
Rated torque	: 1.55 kgfm	Insulation class	: F
Locked rotor torque	: 280 %	Service factor	:
Breakdown torque	: 290 %	Temperature rise	: 80 K
Rated speed	: 3510 rpm		

Rev.	Changes Summary	Performed	Checked	Date
Performed by		Page 2 / 2 Revision		
Checked by				
Date	27/10/2024			



Mounting NEMA F-1									
Mounting B34D									