

DATA SHEET

Single Phase Induction Motor - Squirrel Cage



Customer :				
Product line	: Jet Pump - J type Single-Phase			
Product code :	13608552			
Frame	: 56J			
Insulation class	: F			
Duty cycle	: Cont.(S1)			
Ambient temperature	: -20°C to +40°C			
Altitude	: 1000 m.a.s.l.			
Protection degree	: IP55			
Design	: L			
Cooling method	: IC411 - TEFC			
Mounting	: F-1			
Rotation ¹	: CCW			
Starting method	: Direct On Line			
Approx. weight ³	: 15.2 kg			
Moment of inertia (J)	: 0.0025 kgm ²			
Output [HP]	1.5			
Poles	2			
Frequency [Hz]	60			
Rated voltage [V]	115/208-230			
Rated current [A]	13.2/7.30-6.60			
L. R. Amperes [A]	106/58.4-52.8			
LRC [A]	8.0x(Code K)			
No load current [A]	4.60/1.98-2.30			
Rated speed [RPM]	3500			
Slip [%]	2.78			
Rated torque [kgfm]	0.311			
Locked rotor torque [%]	240			
Breakdown torque [%]	250			
Service factor				
Temperature rise	80 K			
Locked rotor time	12s (cold) 7s (hot)			
Noise level ²	68.0 dB(A)			
Efficiency (%)	25%	64.0		
	50%	66.0		
	75%	73.0		
	100%	75.0		
Power Factor	25%	0.63		
	50%	0.92		
	75%	0.95		
	100%	0.97		
Bearing type	: <u>Drive end</u> 6203 2RS <u>Non drive end</u> 6202 2RS			
Sealing	: V'Ring Without Bearing Seal			
Lubrication interval	: - -			
Lubricant amount	: - -			
Lubricant type	: Mobil Polyrex EM			
Foundation loads	Max. traction : 17 kgf			
	Max. compression : 32 kgf			
Notes				
This revision replaces and cancel the previous one, which must be eliminated. (1) Looking the motor from the shaft end. (2) Measured at 1m and with tolerance of +3dB(A). (3) Approximate weight subject to changes after manufacturing process. (4) At 100% of full load.				
These are average values based on tests with sinusoidal power supply, subject to the tolerances stipulated in NEMA MG-1.				
Rev.	Changes Summary	Performed	Checked	Date
Performed by				
Checked by			Page	Revision
Date	11/05/2022		1 / 2	

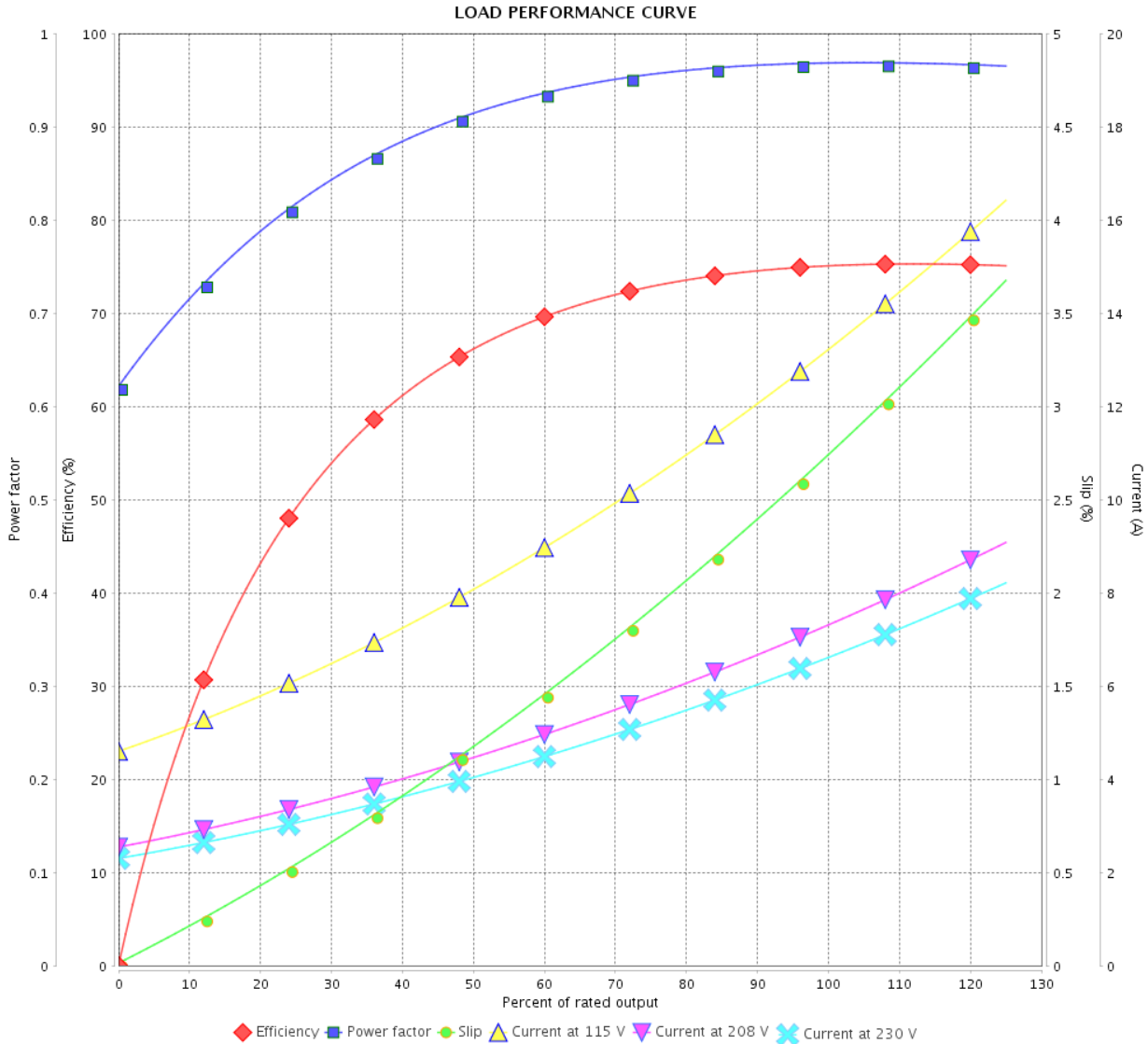
LOAD PERFORMANCE CURVE

Single Phase Induction Motor - Squirrel Cage



Customer :

Product line : Jet Pump - J type Single-Phase Product code : 13608552



Performance : 115/208-230 V 60 Hz 2P

Rated current : 13.2/7.30-6.60 A
 LRC : 8.0
 Rated torque : 0.311 kgfm
 Locked rotor torque : 240 %
 Breakdown torque : 250 %
 Rated speed : 3500 rpm

Moment of inertia (J) : 0.0025 kgm²
 Duty cycle : Cont.(S1)
 Insulation class : F
 Service factor :
 Temperature rise : 80 K
 Design : L

Rev.	Changes Summary	Performed	Checked	Date
Performed by			Page 2 / 2	Revision
Checked by				
Date	11/05/2022			

1 2 3 4 5 6

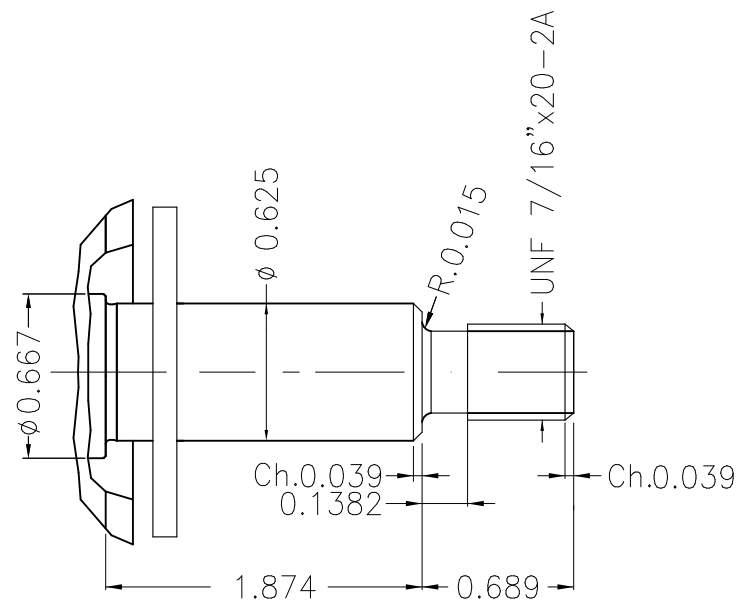
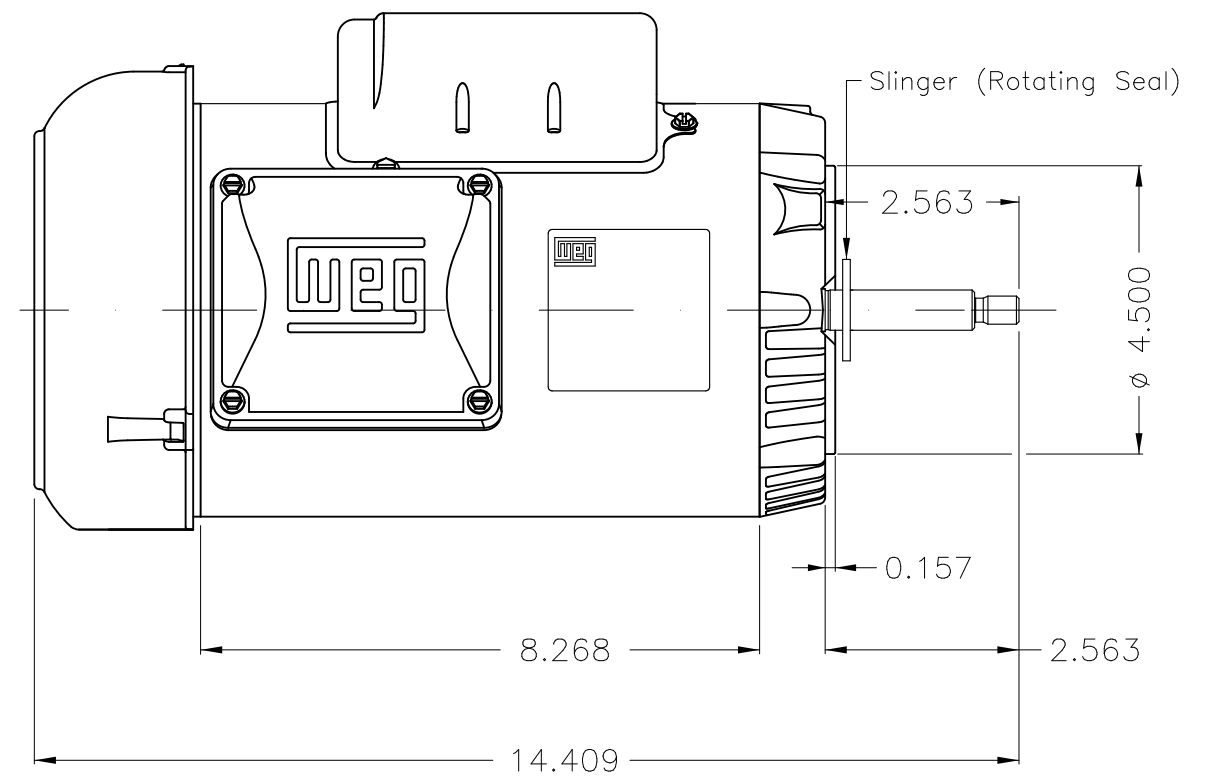
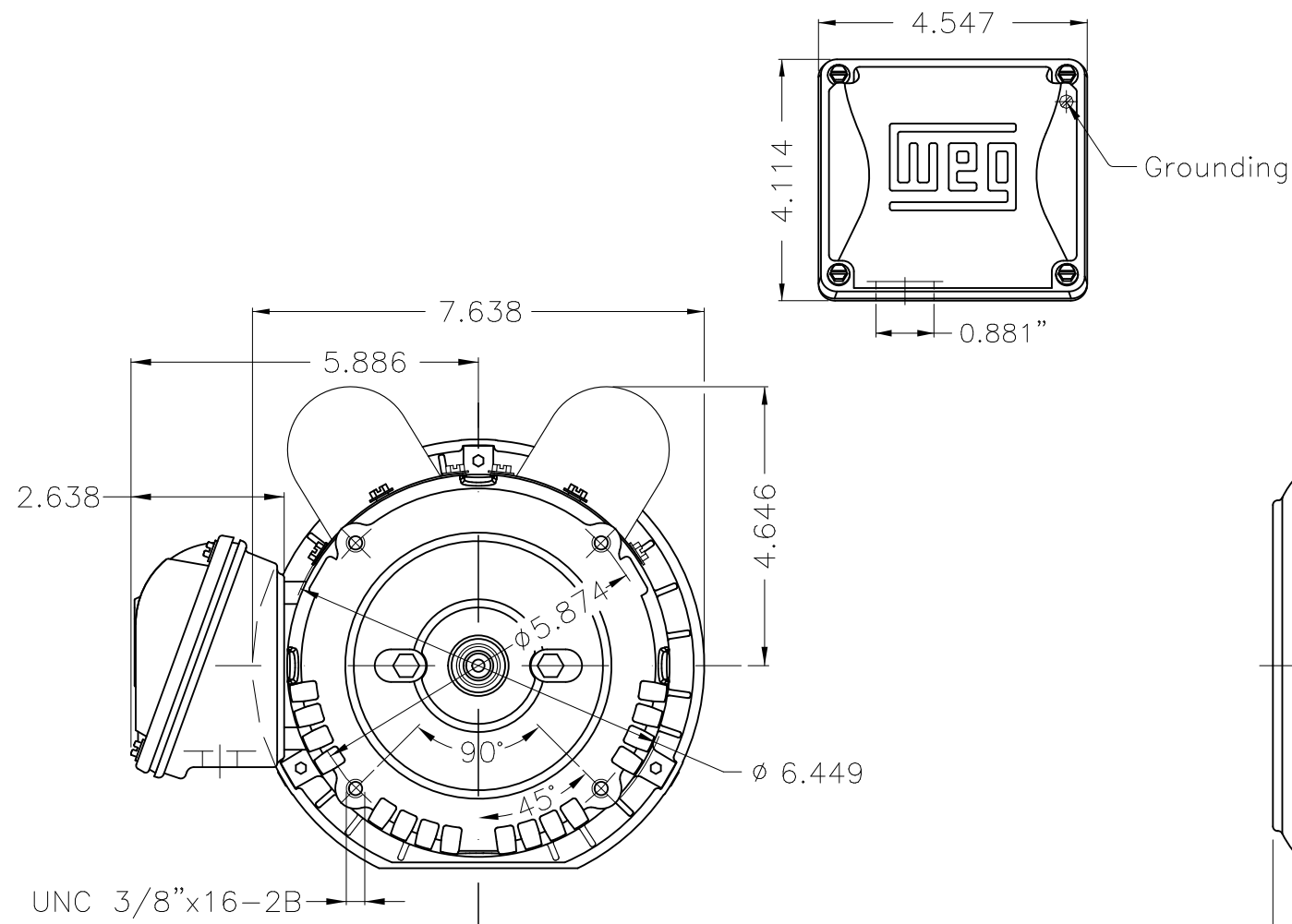
A

B

C

D

E



Color Munsell N 1 matte black
 Painting plan 207N
 Mounting F-1/B14R(D)

						HYBRISUSER				00	
ECM	LOC	SUMMARY OF MODIFICATIONS				EXECUTED	CHECKED	RELEASED	DATE	VER	
EXECUTED	HYBRISUSER	SINGLE PH. MOTOR ROLLED STEEL JET PUMP THREADED									PREVIEW WDD 00 SHEET 1 / 1
CHECKED		FRAME 56J IP55 TEFC									
RELEASED											
REL. DATE		WMO	Jaragua do Sul	Product Engineering							

1.5 HP 02 Poles 60 Hz

A