

# DATA SHEET

## Three Phase Induction Motor - Squirrel Cage



Customer : V.J. PAMENSKY CANADA INC.

Product line : W01 - TEFC - Nema Premium Efficiency JM Derating Product code : 13221573

|                     |                    |                             |                  |
|---------------------|--------------------|-----------------------------|------------------|
| Frame               | : 254/6JM          | Cooling method              | : IC411 - TEFC   |
| Insulation class    | : F                | Mounting                    | : F-1/B34R(D)    |
| Duty cycle          | : S1               | Rotation <sup>1</sup>       | : Both           |
| Ambient temperature | : -20 °C to +40 °C | Starting method             | : Direct On Line |
| Altitude            | : 3280 ft          | Approx. weight <sup>3</sup> | : 227 lb         |
| Protection degree   | : IP55             | Moment of inertia (J)       | : 2.15 sq.ft.lb  |
| Design              | : B                |                             |                  |

|                          | 15 HP (11 kW) | 10 HP (7.5 kW) | 10 HP (7.5 kW) |
|--------------------------|---------------|----------------|----------------|
| Output                   | 15 HP (11 kW) | 10 HP (7.5 kW) | 10 HP (7.5 kW) |
| Poles                    | 4             | 4              | 4              |
| Frequency                | 60 Hz         | 50 Hz          | 50 Hz          |
| Rated voltage            | 230/460 V     | 190/380 V      | 220/415 V      |
| Rated current            | 36.4/18.2 A   | 30.8/15.4 A    | 28.3/15.0 A    |
| L. R. Amperes            | 237/118 A     | 228/114 A      | 238/126 A      |
| LRC                      | 6.5           | 7.4            | 8.4            |
| No load current          | 17.3/8.65 A   | 16.1/8.05 A    | 17.3/9.19 A    |
| Rated speed              | 1770 rpm      | 1480 rpm       | 1485 rpm       |
| Slip                     | 1.67 %        | 1.33 %         | 1.00 %         |
| Rated torque             | 43.9 ft.lb    | 35.0 ft.lb     | 34.9 ft.lb     |
| Locked rotor torque      | 250 %         | 260 %          | 310 %          |
| Pull up torque           | 210 %         | 220 %          | 260 %          |
| Breakdown torque         | 300 %         | 350 %          | 420 %          |
| Service factor           | 1.15          | 1.15           | 1.15           |
| Temperature rise         | 80 K          | 80 K           | 80 K           |
| Noise level <sup>2</sup> | 68.0 dB(A)    | 65.0 dB(A)     | 65.0 dB(A)     |
| Locked rotor time (hot)  | 19 s          | 25 s           | 20 s           |
| Locked rotor time (cold) | 34 s          | 45 s           | 36 s           |
| Efficiency (%)           | 50%           | 91.0           | 91.6           |
|                          | 75%           | 92.4           | 92.6           |
|                          | 100%          | 92.4           | 92.5           |
| Power Factor             | 50%           | 0.64           | 0.60           |
|                          | 75%           | 0.76           | 0.73           |
|                          | 100%          | 0.82           | 0.80           |

Losses at normative operating points (speed;torque), in percentage of rated output power

| Losses (%) | P1(0,9;1,0) | P2(0,5;1,0) | P3(0,25;1,0) | P4(0,9;0,5) | P5(0,5;0,5) | P6(0,5;0,25) | P7(0,25;0,25) |
|------------|-------------|-------------|--------------|-------------|-------------|--------------|---------------|
|            | 9.5         | 8.4         | 8.1          | 4.5         | 3.3         | 2.1          | 1.6           |
|            | 9.3         | 8.3         | 7.9          | 4.3         | 3.2         | 2.1          | 1.6           |
|            | 9.3         | 8.3         | 8.0          | 4.4         | 3.2         | 2.1          | 1.6           |
|            | 9.3         | 8.3         | 8.0          | 4.4         | 3.2         | 2.1          | 1.6           |
|            | 9.3         | 8.3         | 8.0          | 4.4         | 3.2         | 2.1          | 1.6           |
|            | 9.3         | 8.3         | 8.0          | 4.4         | 3.2         | 2.1          | 1.6           |
|            | 9.3         | 8.3         | 8.0          | 4.4         | 3.2         | 2.1          | 1.6           |

|                      |                  |               |  |
|----------------------|------------------|---------------|--|
| Bearing type         | Drive end        | Non drive end | Foundation loads                       |
|                      | 6309-Z-C3        | 6208-Z-C3     |  |
| Lubrication interval | 20000 h          | 20000 h       | Max. compression :                     |
|                      | 13 g             | 8 g           | Load type :-                           |
| Lubricant amount     | MOBIL POLYREX EM |               | Load torque :-                         |
| Lubricant type       |                  |               | Load inertia (J=GD <sup>2</sup> /4) :- |

Notes  
See notes on page 2.

| Rev.         | Changes Summary | Rev.  | Checked | Date       |
|--------------|-----------------|-------|---------|------------|
|              |                 |       |         |            |
| Performed by | farazq          |       |         | 1865184498 |
| Checked by   | AUTOMATICO      | Page  | Rev.    |            |
| Date         | 24/06/2026      | 1 / 2 | 0       |            |

# DATA SHEET

## Three Phase Induction Motor - Squirrel Cage



Customer : V.J. PAMENSKY CANADA INC.

Product line : W01 - TEFC - Nema Premium Efficiency JM Derating  
Product code : 13221573

| Thermal protection ID | Application | Type | Quantity | Sensing Temperature |
|-----------------------|-------------|------|----------|---------------------|
|-----------------------|-------------|------|----------|---------------------|

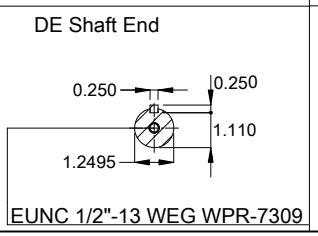
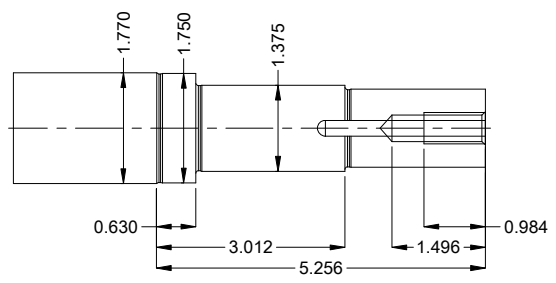
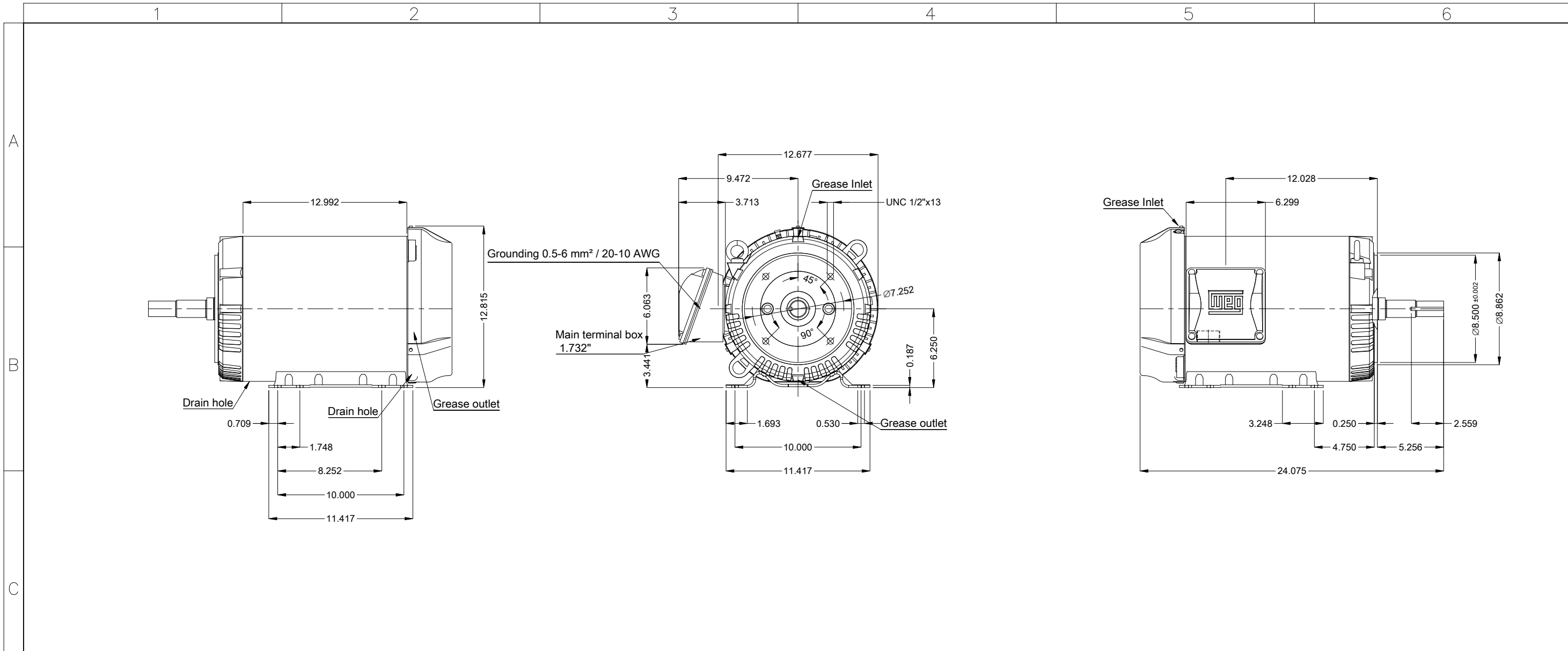
Notes  
USABLE @208V 40.2A SF 1.15 SFA 46.3A

|           |               |                 |           |                 |
|-----------|---------------|-----------------|-----------|-----------------|
| Standards | Specification | : MG1 - Part 10 | Vibration | : MG1 - Part 7  |
|           | Test          | : MG1 - Part 12 | Tolerance | : MG1 - Part 12 |
|           | Noise         | : MG1 - Part 9  |           |                 |

This revision replaces and cancel the previous one, which must be eliminated.  
(1) Looking the motor from the shaft end.  
(2) Measured at 1m and with tolerance of +3dB(A).  
(3) Approximate weight, subject to be changed after manufacturing process.

These are average values based on tests with sinusoidal power supply, subject to the tolerances stipulated in NEMA MG 1-12.

| Rev.         | Changes Summary | Rev.       | Checked | Date |
|--------------|-----------------|------------|---------|------|
|              |                 |            |         |      |
| Performed by | farazq          | 1865184498 |         |      |
| Checked by   | AUTOMATICO      | Page       | Rev.    |      |
| Date         | 24/06/2026      | 2 / 2      | 0       |      |



Internal AEGIS ground ring on the DE  
 Color Munsell N 1 matte black  
 Painting plan 207N  
 Mounting MARKET F-1/B34R(D)  
 Mounting B34D

|                      |            |   |  |  |  |  |          |         |          |      |     |
|----------------------|------------|---|--|--|--|--|----------|---------|----------|------|-----|
| 15 HP 04 Poles 60 Hz |            |   |  |  |  |  |          |         |          | A    |     |
| Scale 1 : 8          |            |   |  |  |  |  |          |         |          |      |     |
| HYBRISUSER           |            |   |  |  |  |  |          |         |          | 00   |     |
| ECM                  | LOC        | SUMMARY OF MODIFICATIONS                        |  |  |  |  | EXECUTED | CHECKED | RELEASED | DATE | VER |
| EXECUTED             | HYBRISUSER | THREE PH. MOTOR ROLLED STEEL JM NEMA PREM. EFF. |  |  |  |  | PREVIEW  |         | WDD 00   |      |     |
| CHECKED              |            | FRAME 254/6JM IP55 TEFC                         |  |  |  |  | SHEET    |         | 1 / 1    |      |     |
| RELEASED             |            |   |  |  |  |  |          |         |          |      |     |
| REL. DATE            |            |   |  |  |  |  |          |         |          |      |     |

