

# DATA SHEET



## Three Phase Induction Motor - Squirrel Cage

Customer :

Product line : W22 P Base NEMA Premium Efficiency Three-Phase      Product code : 14046783

Frame	: 213HP	Locked rotor time	: 104s (cold) 58s (hot)
Output	: 3 HP (2.2 kW)	Temperature rise	: 80 K
Poles	: 6	Duty cycle	: Cont.(S1)
Frequency	: 60 Hz	Ambient temperature	: -20°C to +40°C
Rated voltage	: 575 V	Altitude	: 1000 m.a.s.l.
Rated current	: 3.53 A	Protection degree	: IP55
L. R. Amperes	: 24.7 A	Cooling method	: IC411 - TEFC
LRC	: 7.0x(Code K)	Mounting	: W-6
No load current	: 2.04 A	Rotation <sup>1</sup>	: Both (CW and CCW)
Rated speed	: 1175 rpm	Noise level <sup>2</sup>	: 55.0 dB(A)
Slip	: 2.08 %	Starting method	: Direct On Line
Rated torque	: 1.85 kgfm	Approx. weight <sup>3</sup>	: 71.2 kg
Locked rotor torque	: 190 %		
Breakdown torque	: 270 %		
Insulation class	: F		
Service factor	: 1.25		
Moment of inertia (J)	: 0.0504 kgm <sup>2</sup>		
Design	: B		

Output	50%	75%	100%	Foundation loads
Efficiency (%)	86.5	88.5	89.5	Max. traction
Power Factor	0.50	0.63	0.70	Max. compression

Losses at normative operating points (speed;torque), in percentage of rated output power

P1 (0,9;1,0)	P2 (0,5;1,0)	P3 (0,25;1,0)	P4 (0,9;0,5)	P5 (0,5;0,5)	P6 (0,5;0,25)	P7 (0,25;0,25)
11.0	8.6	8.0	6.6	4.3	3.4	2.4

		<u>Drive end</u>	<u>Non drive end</u>
Bearing type	:	6309 ZZ	6207 ZZ
Sealing	:	V'Ring	V'Ring
Lubrication interval	:	-	-
Lubricant amount	:	-	-
Lubricant type	:	Mobil Polyrex EM	

Notes

This revision replaces and cancel the previous one, which must be eliminated.

- (1) Looking the motor from the shaft end.
- (2) Measured at 1m and with tolerance of +3dB(A).
- (3) Approximate weight subject to changes after manufacturing process.
- (4) At 100% of full load.

These are average values based on tests with sinusoidal power supply, subject to the tolerances stipulated in NEMA MG-1.

Rev.	Changes Summary	Performed	Checked	Date
Performed by				
Checked by			Page	Revision
Date	27/10/2024		1 / 2	

# LOAD PERFORMANCE CURVE

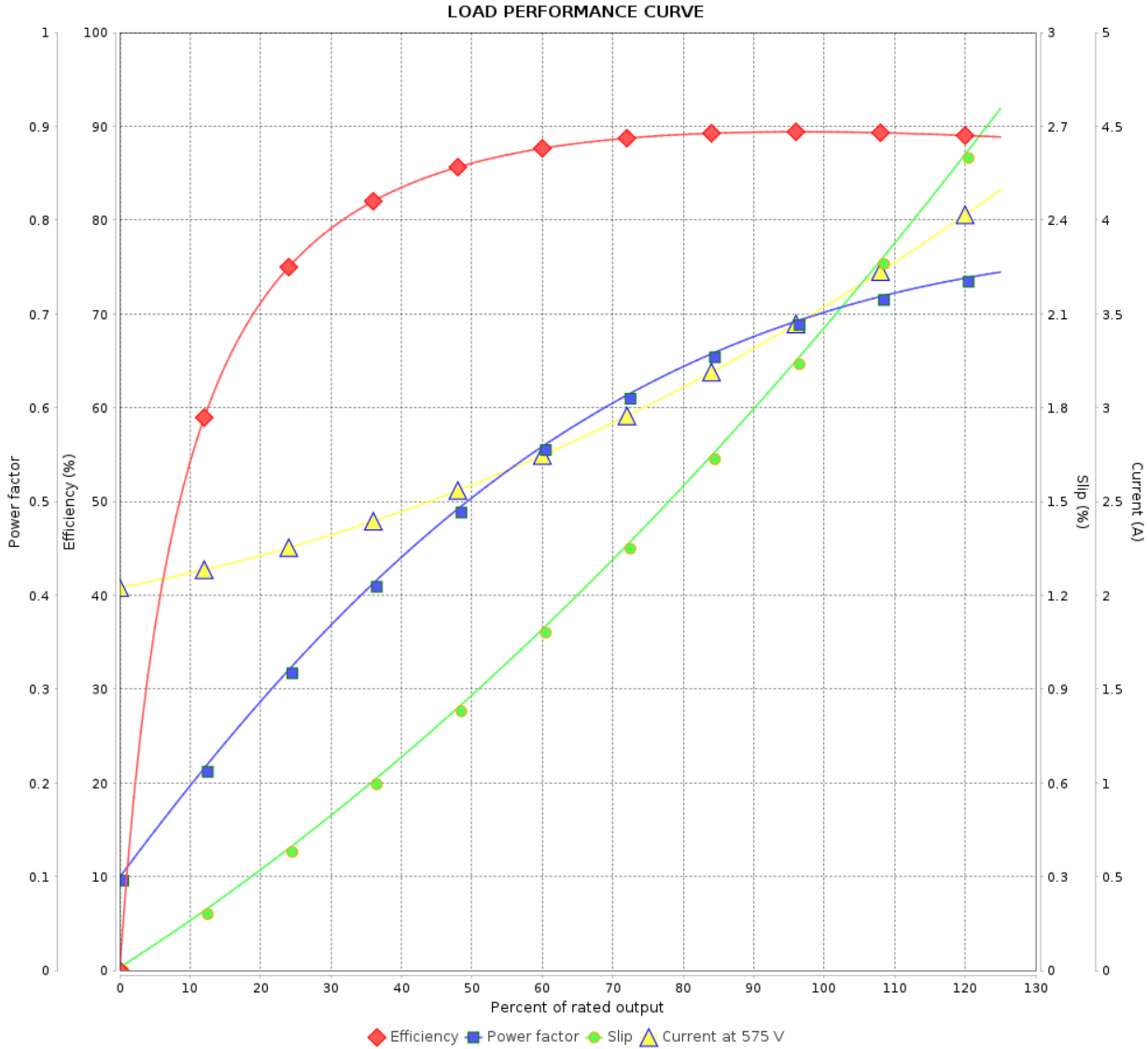
Three Phase Induction Motor - Squirrel Cage



Customer :

Product line : W22 P Base NEMA Premium  
Efficiency Three-Phase

Product code : 14046783

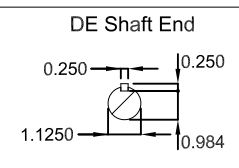
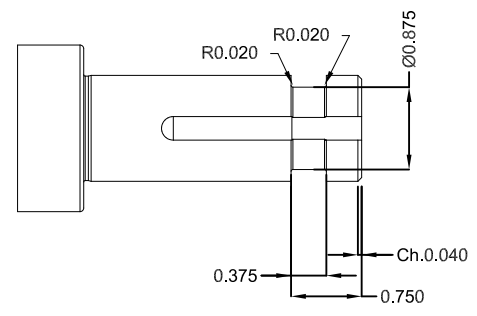
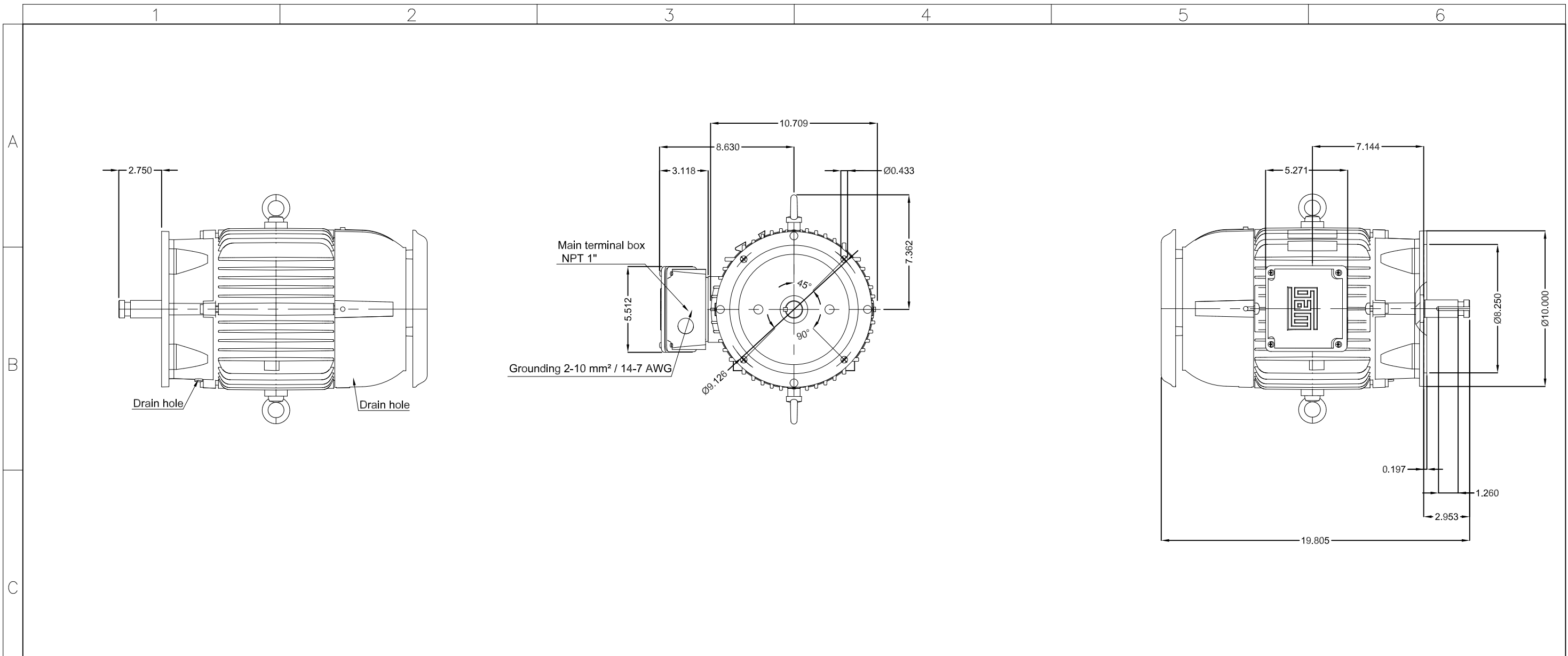


Performance : 575 V 60 Hz 6P

Rated current : 3.53 A  
LRC : 7.0  
Rated torque : 1.85 kgfm  
Locked rotor torque : 190 %  
Breakdown torque : 270 %  
Rated speed : 1175 rpm

Moment of inertia (J) : 0.0504 kgm<sup>2</sup>  
Duty cycle : Cont.(S1)  
Insulation class : F  
Service factor : 1.25  
Temperature rise : 80 K  
Design : B

Rev.	Changes Summary	Performed	Checked	Date
Performed by			Page 2 / 2	Revision
Checked by				
Date	27/10/2024			



Color RAL 5009  
 Painting plan 207A  
 Mounting NEMA W-6  
 Mounting V1

3 HP 06 Poles 60 Hz										A	
ECM	LOC	SUMMARY OF MODIFICATIONS					EXECUTED	CHECKED	RELEASED	DATE	VER
EXECUTED	HYBRISUSER	THREE PH. MOTOR W22 P. BASE NEMA PREM. EFF.									00
CHECKED		FRAME 213HP IP55 TEFC									
RELEASED											
REL. DATE											
						PREVIEW		WDD 00			
						SHEET /					