

DATA SHEET

Three Phase Induction Motor - Squirrel Cage



Customer :					
Product line	: W22 P Base NEMA Premium Efficiency Three-Phase	Product code :	13129046		
Frame	: 213HP	Cooling method	: IC411 - TEFC		
Insulation class	: F	Mounting	: W-6		
Duty cycle	: Cont.(S1)	Rotation ¹	: Both (CW and CCW)		
Ambient temperature	: -20°C to +40°C	Starting method	: Direct On Line		
Altitude	: 1000 m.a.s.l.	Approx. weight ³	: 72.3 kg		
Protection degree	: IP55	Moment of inertia (J)	: 0.0504 kgm ²		
Design	: B				
Output [HP]	3	3	3	3	
Poles	6	6	6	6	
Frequency [Hz]	60	50	50	50	
Rated voltage [V]	230/460	380	400	415	
Rated current [A]	8.82/4.41	5.09	4.97	4.93	
L. R. Amperes [A]	61.7/30.9	29.5	31.8	33.5	
LRC [A]	7.0x(Code K)	5.8x(Code H)	6.4x(Code J)	6.8x(Code K)	
No load current [A]	5.10/2.55	2.45	2.60	2.75	
Rated speed [RPM]	1175	965	970	970	
Slip [%]	2.08	3.50	3.00	3.00	
Rated torque [kgfm]	1.85	2.26	2.24	2.24	
Locked rotor torque [%]	190	170	180	200	
Breakdown torque [%]	270	229	240	250	
Service factor	1.25	1.00	1.00	1.00	
Temperature rise	80 K	80 K	80 K	80 K	
Locked rotor time	104s (cold) 58s (hot)	72s (cold) 40s (hot)	72s (cold) 40s (hot)	72s (cold) 40s (hot)	
Noise level ²	55.0 dB(A)	53.0 dB(A)	53.0 dB(A)	53.0 dB(A)	
Efficiency (%)	25%				
	50%	86.5	87.0	87.0	
	75%	88.5	88.0	88.0	
	100%	89.5	87.5	87.5	
Power Factor	25%				
	50%	0.50	0.57	0.53	
	75%	0.63	0.70	0.66	
	100%	0.70	0.75	0.73	
Losses at normative operating points (speed;torque), in percentage of rated output power					
Losses (%)	P1 (0,9;1,0)	11.0	13.4	13.4	13.4
	P2 (0,5;1,0)	8.6	10.5	10.5	10.5
	P3 (0,25;1,0)	8.0	9.7	9.7	9.7
	P4 (0,9;0,5)	6.6	8.0	8.0	8.0
	P5 (0,5;0,5)	4.3	5.3	5.3	5.3
	P6 (0,5;0,25)	3.4	4.1	4.1	4.1
	P7 (0,25;0,25)	2.4	3.0	3.0	3.0
Bearing type	: Drive end : 6309 ZZ Non drive end : 6207 ZZ	Foundation loads			
Sealing	: V'Ring V'Ring	Max. traction			
Lubrication interval	: - -	Max. compression			
Lubricant amount	: - -				
Lubricant type	: Mobil Polyrex EM				
This revision replaces and cancel the previous one, which must be eliminated. (1) Looking the motor from the shaft end. (2) Measured at 1m and with tolerance of +3dB(A). (3) Approximate weight subject to changes after manufacturing process.		These are average values based on tests with sinusoidal power supply, subject to the tolerances stipulated in NEMA MG-1.			
Rev.	Changes Summary	Performed	Checked	Date	
Performed by					
Checked by			Page	Revision	
Date	27/10/2024		1 / 6		

DATA SHEET

Three Phase Induction Motor - Squirrel Cage



Customer : _____

Notes
USABLE @208V 9.76A SF 1.15 SFA 11.2A

Rev.	Changes Summary	Performed	Checked	Date
Performed by				
Checked by			Page	Revision
Date	27/10/2024		2 / 6	

LOAD PERFORMANCE CURVE

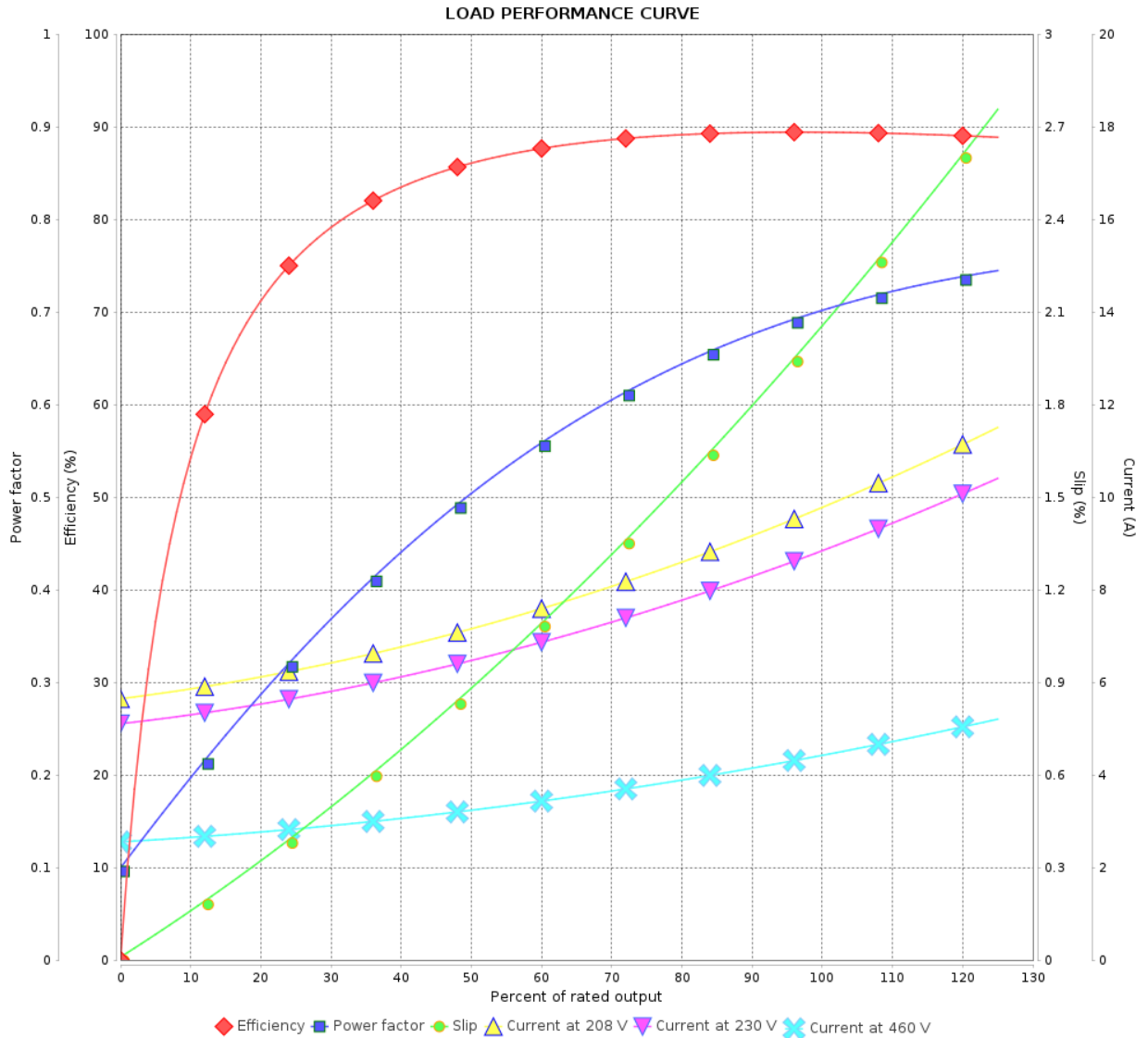
Three Phase Induction Motor - Squirrel Cage



Customer :

Product line : W22 P Base NEMA Premium Efficiency Three-Phase

Product code : 13129046



Performance : 230/460 V 60 Hz 6P

Rated current : 8.82/4.41 A
 LRC : 7.0
 Rated torque : 1.85 kgfm
 Locked rotor torque : 190 %
 Breakdown torque : 270 %
 Rated speed : 1175 rpm

Moment of inertia (J) : 0.0504 kgm²
 Duty cycle : Cont.(S1)
 Insulation class : F
 Service factor : 1.25
 Temperature rise : 80 K
 Design : B

Rev.	Changes Summary	Performed	Checked	Date
Performed by			Page	Revision
Checked by				
Date				

LOAD PERFORMANCE CURVE

Three Phase Induction Motor - Squirrel Cage

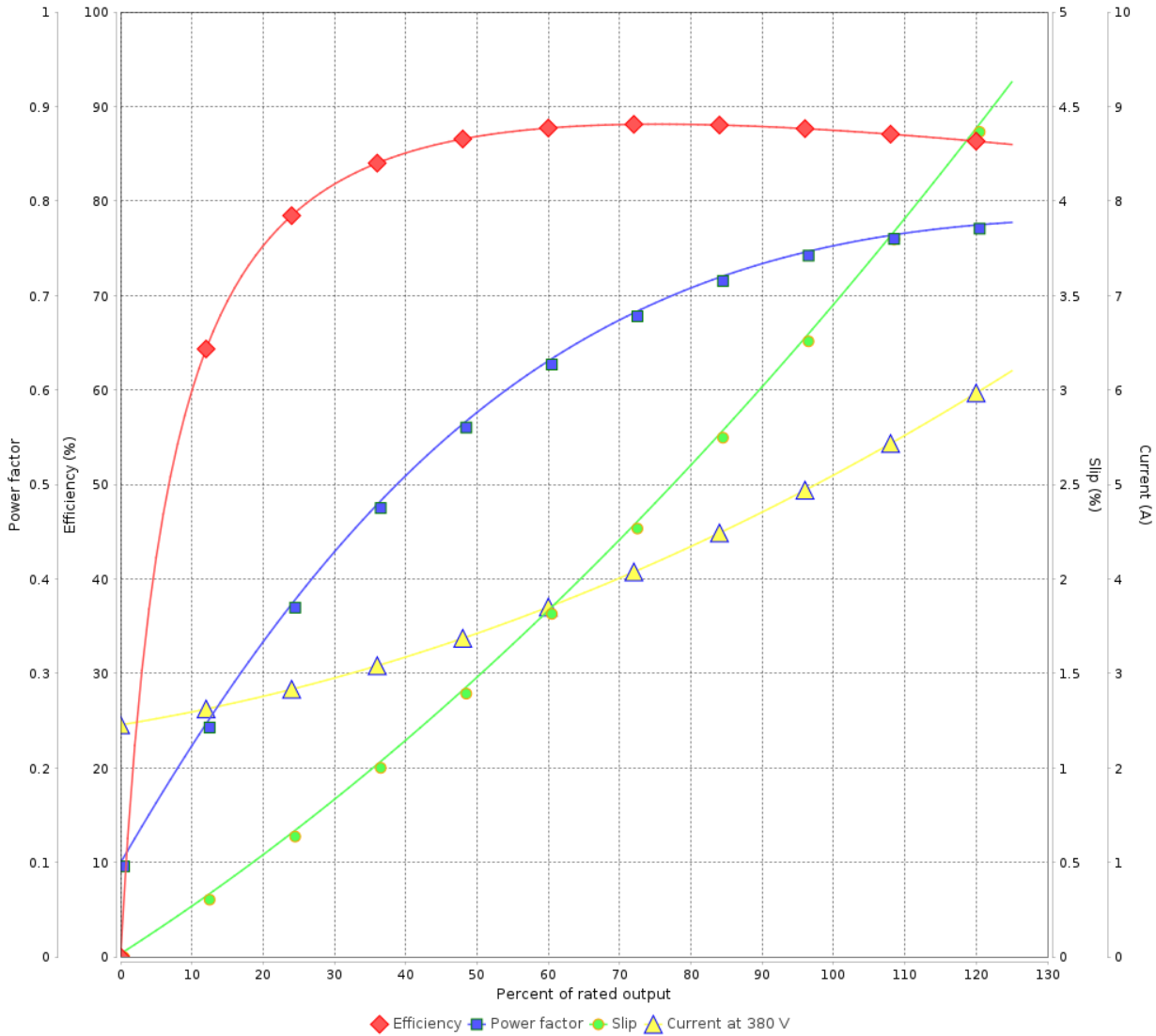


Customer : _____

Product line : W22 P Base NEMA Premium
Efficiency Three-Phase

Product code : 13129046

LOAD PERFORMANCE CURVE



Performance : 380 V 50 Hz 6P IE4

Rated current : 5.09 A
LRC : 5.8
Rated torque : 2.26 kgfm
Locked rotor torque : 170 %
Breakdown torque : 229 %
Rated speed : 965 rpm

Moment of inertia (J) : 0.0504 kgm²
Duty cycle : Cont.(S1)
Insulation class : F
Service factor : 1.00
Temperature rise : 80 K
Design : B

Rev.	Changes Summary	Performed	Checked	Date
Performed by			Page	Revision
Checked by				
Date				

LOAD PERFORMANCE CURVE

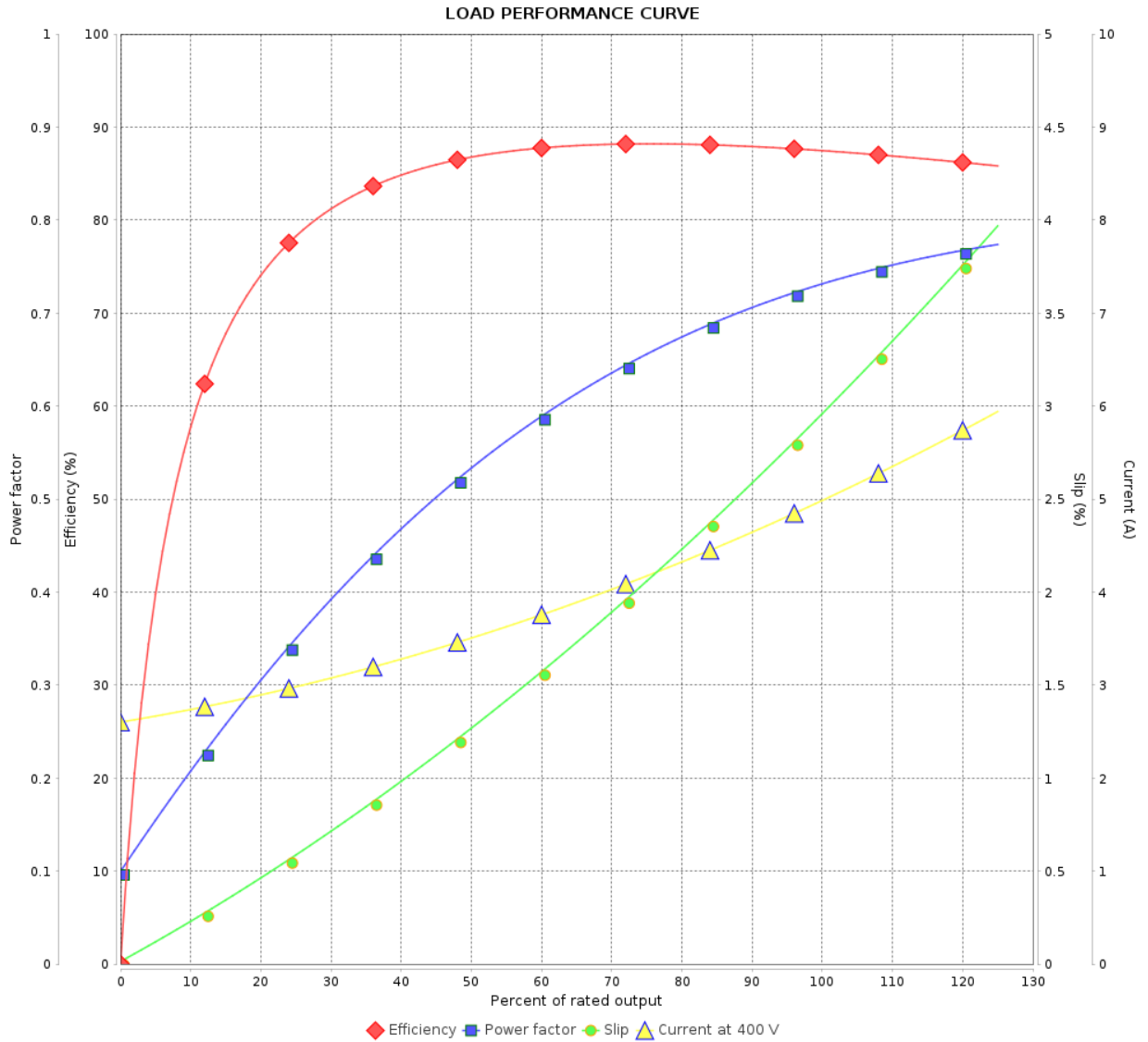
Three Phase Induction Motor - Squirrel Cage



Customer :

Product line : W22 P Base NEMA Premium
Efficiency Three-Phase

Product code : 13129046



Performance : 400 V 50 Hz 6P IE4

Rated current : 4.97 A
 LRC : 6.4
 Rated torque : 2.24 kgfm
 Locked rotor torque : 180 %
 Breakdown torque : 240 %
 Rated speed : 970 rpm

Moment of inertia (J) : 0.0504 kgm²
 Duty cycle : Cont.(S1)
 Insulation class : F
 Service factor : 1.00
 Temperature rise : 80 K
 Design : B

Rev.	Changes Summary	Performed	Checked	Date
Performed by			Page	Revision
Checked by				
Date				
			5 / 6	

LOAD PERFORMANCE CURVE

Three Phase Induction Motor - Squirrel Cage

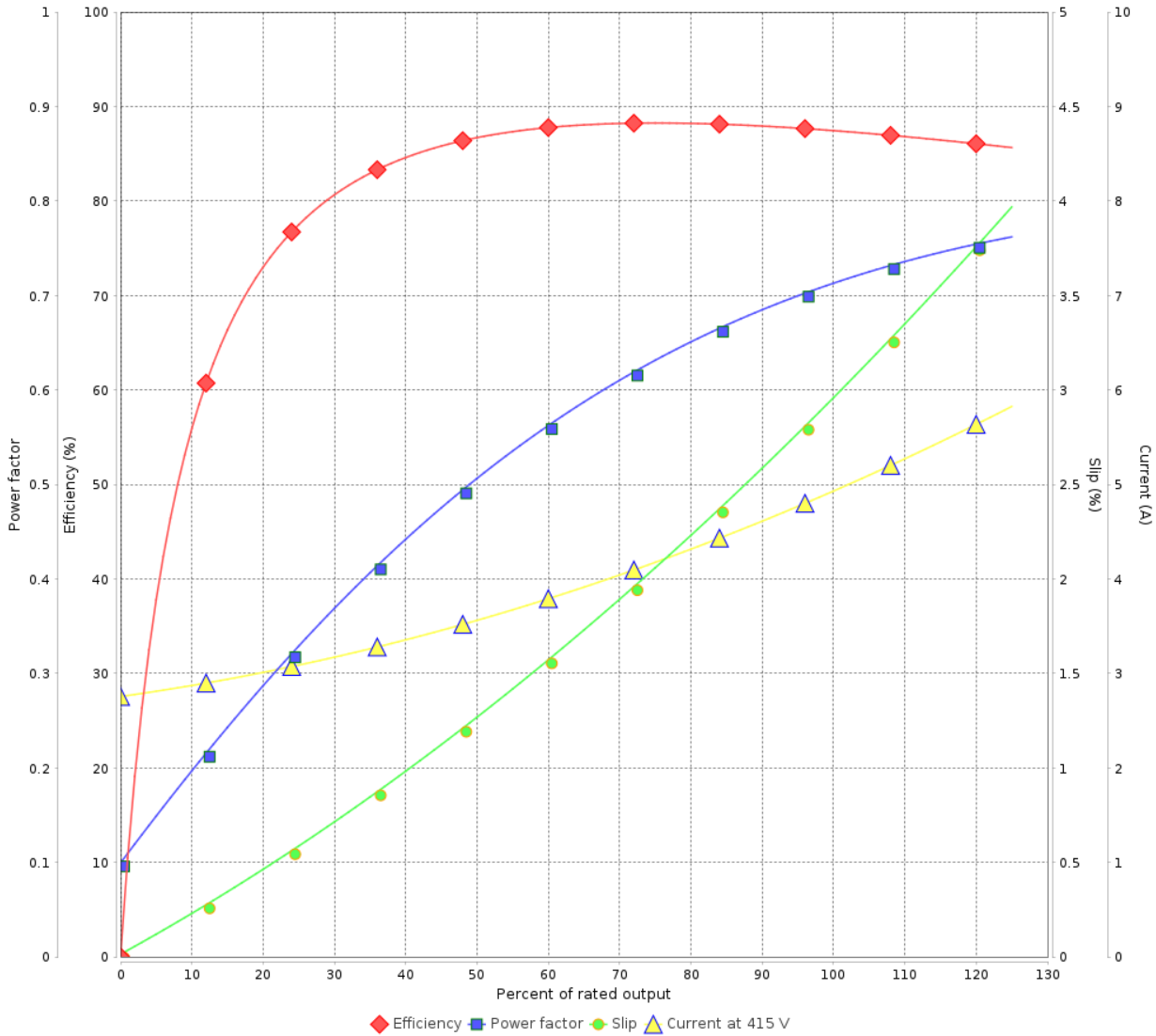


Customer : _____

Product line : W22 P Base NEMA Premium
Efficiency Three-Phase

Product code : 13129046

LOAD PERFORMANCE CURVE

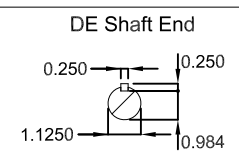
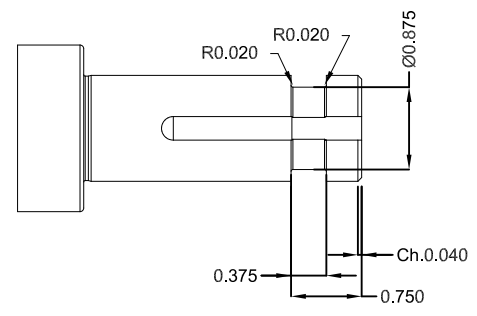
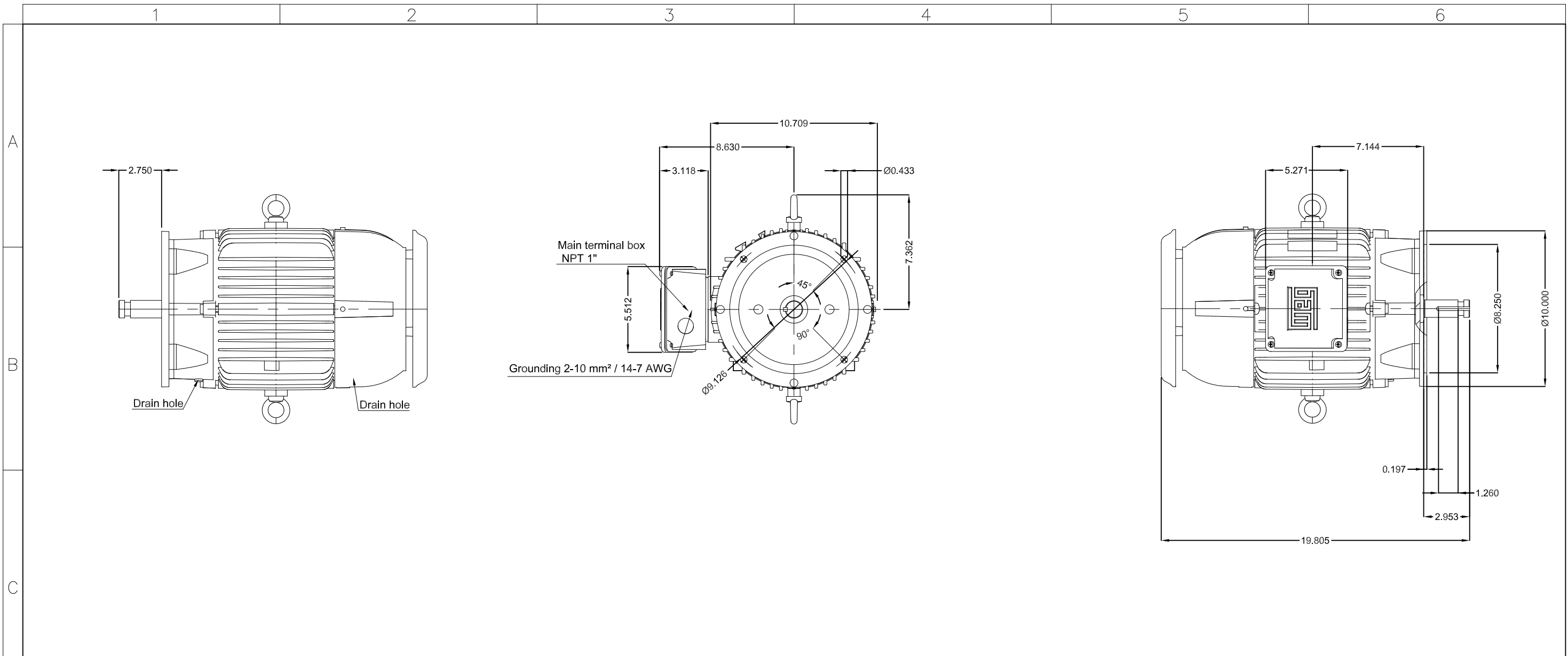


Performance : 415 V 50 Hz 6P IE4

Rated current : 4.93 A
LRC : 6.8
Rated torque : 2.24 kgfm
Locked rotor torque : 200 %
Breakdown torque : 250 %
Rated speed : 970 rpm

Moment of inertia (J) : 0.0504 kgm²
Duty cycle : Cont.(S1)
Insulation class : F
Service factor : 1.00
Temperature rise : 80 K
Design : B

Rev.	Changes Summary	Performed	Checked	Date
Performed by			Page	Revision
Checked by				
Date				



Color RAL 5009
 Painting plan 207A
 Mounting NEMA W-6
 Mounting V1

3 HP 06 Poles 60 Hz						A
ECM	LOC	SUMMARY OF MODIFICATIONS		EXECUTED	CHECKED	RELEASED
EXECUTED	HYBRISUSER	THREE PH. MOTOR W22 P. BASE NEMA PREM. EFF.				
CHECKED		FRAME 213HP IP55 TEFC				
RELEASED						
REL. DATE						
				HYBRISUSER		00
				PREVIEW		
				WDD		00
				SHEET		/

