

# DATA SHEET



## Three Phase Induction Motor - Squirrel Cage

Customer :

Product line : W22 P Base NEMA Premium Efficiency Three-Phase      Product code : 14004826

Frame	: 364/5HP	Locked rotor time	: 32s (cold) 18s (hot)
Output	: 50 HP (37 kW)	Temperature rise	: 80 K
Poles	: 6	Duty cycle	: Cont.(S1)
Frequency	: 60 Hz	Ambient temperature	: -20°C to +40°C
Rated voltage	: 575 V	Altitude	: 1000 m.a.s.l.
Rated current	: 45.9 A	Protection degree	: IP55
L. R. Amperes	: 294 A	Cooling method	: IC411 - TEFC
LRC	: 6.4x(Code G)	Mounting	: W-6
No load current	: 16.0 A	Rotation <sup>1</sup>	: Both (CW and CCW)
Rated speed	: 1183 rpm	Noise level <sup>2</sup>	: 66.0 dB(A)
Slip	: 1.42 %	Starting method	: Direct On Line
Rated torque	: 30.7 kgfm	Approx. weight <sup>3</sup>	: 416 kg
Locked rotor torque	: 200 %		
Breakdown torque	: 240 %		
Insulation class	: F		
Service factor	: 1.25		
Moment of inertia (J)	: 1.36 kgm <sup>2</sup>		
Design	: B		

Output	50%	75%	100%	Foundation loads
Efficiency (%)	93.6	94.1	94.1	Max. traction
Power Factor	0.74	0.83	0.86	Max. compression

Losses at normative operating points (speed;torque), in percentage of rated output power

P1 (0,9;1,0)	P2 (0,5;1,0)	P3 (0,25;1,0)	P4 (0,9;0,5)	P5 (0,5;0,5)	P6 (0,5;0,25)	P7 (0,25;0,25)
6.2	5.2	4.6	2.8	1.9	1.2	0.8

		<u>Drive end</u>	<u>Non drive end</u>
Bearing type	:	6316 C3	6314 C3
Sealing	:	Lip Seal	Lip Seal
Lubrication interval	:	8000 h	8000 h
Lubricant amount	:	34 g	27 g
Lubricant type	:	Mobil Polyrex EM	

Notes

This revision replaces and cancel the previous one, which must be eliminated.

- (1) Looking the motor from the shaft end.
- (2) Measured at 1m and with tolerance of +3dB(A).
- (3) Approximate weight subject to changes after manufacturing process.
- (4) At 100% of full load.

These are average values based on tests with sinusoidal power supply, subject to the tolerances stipulated in NEMA MG-1.

Rev.	Changes Summary	Performed	Checked	Date
Performed by				
Checked by			Page	Revision
Date	27/10/2024		1 / 2	

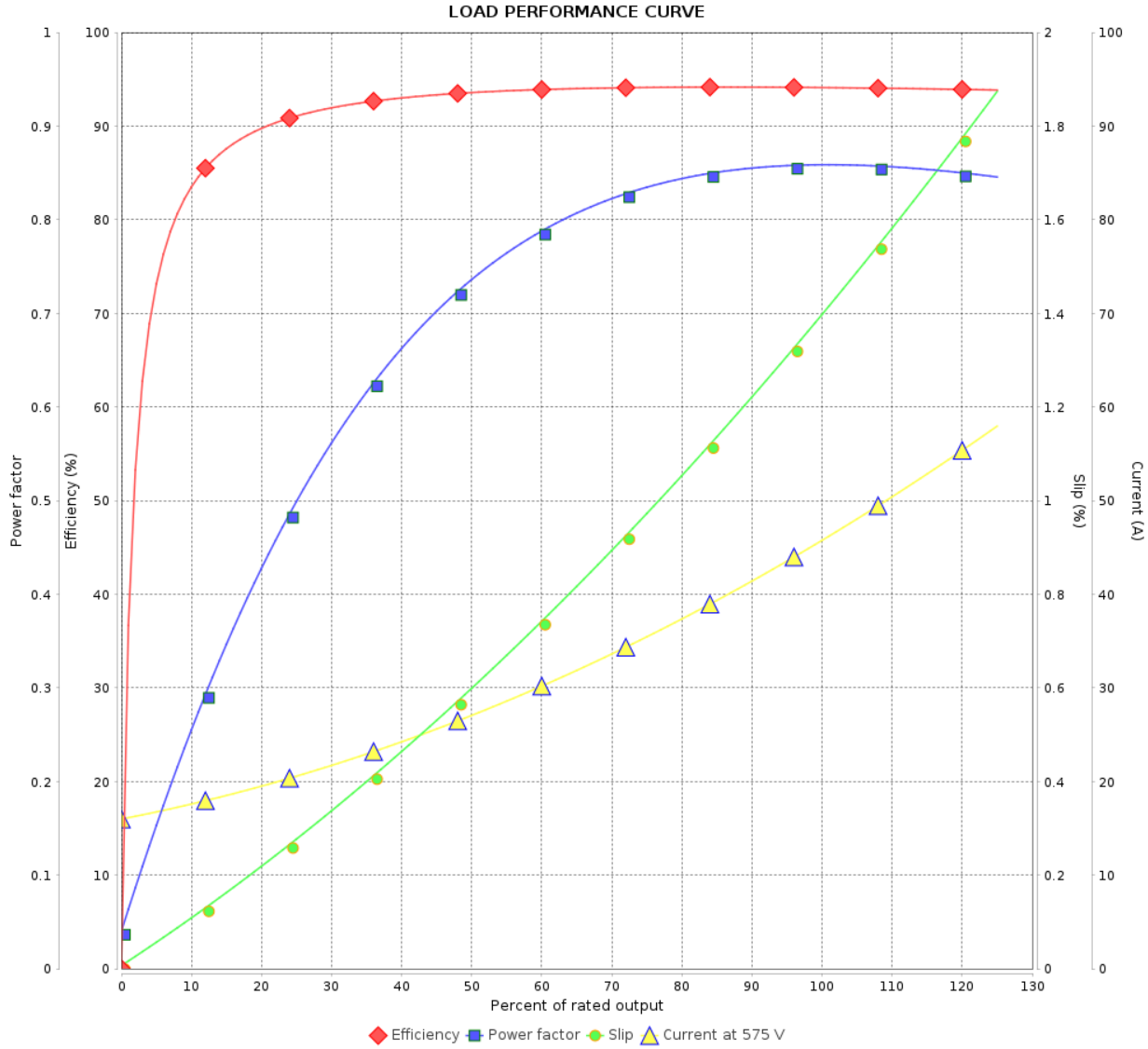
# LOAD PERFORMANCE CURVE

Three Phase Induction Motor - Squirrel Cage



Customer :

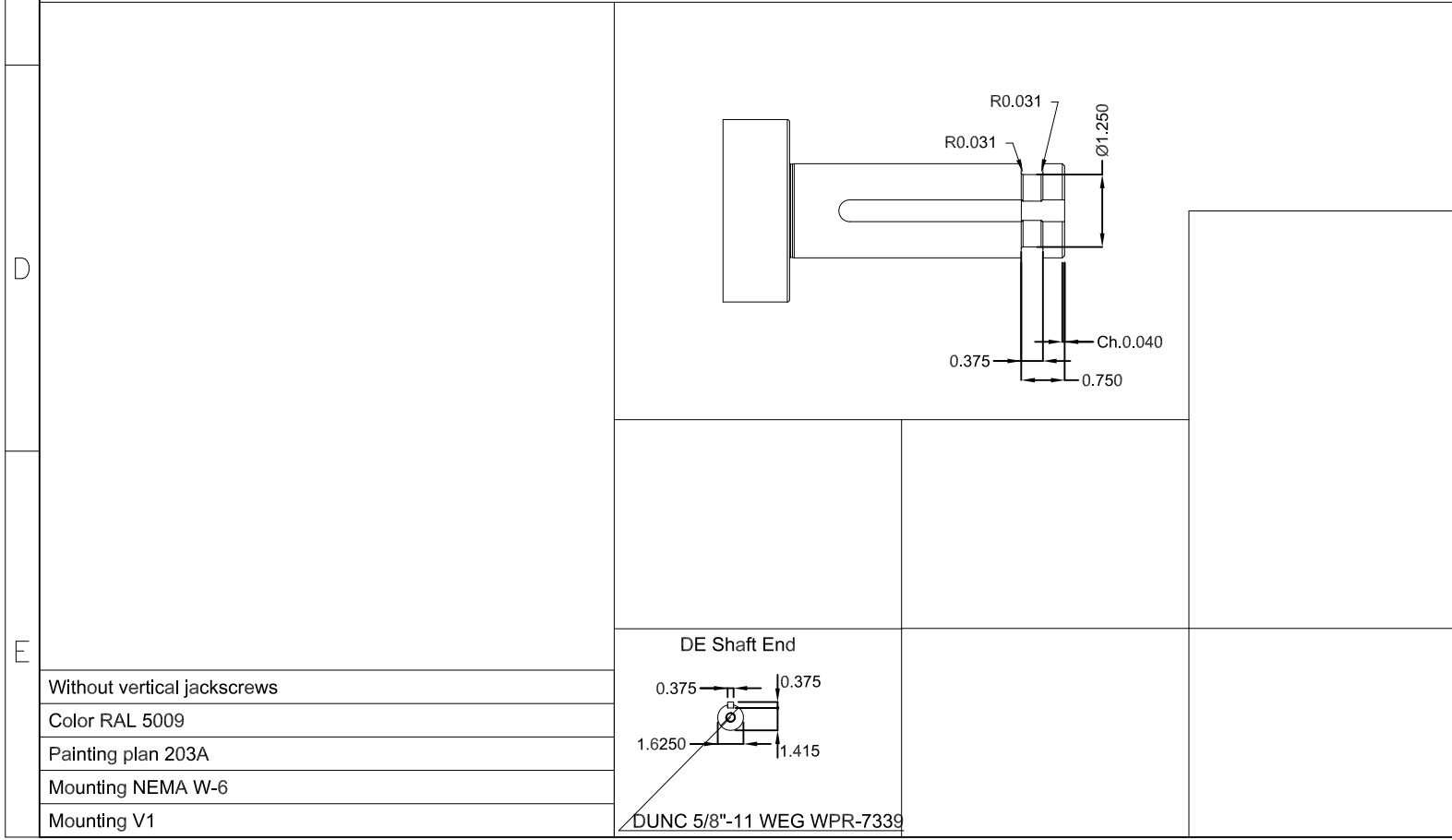
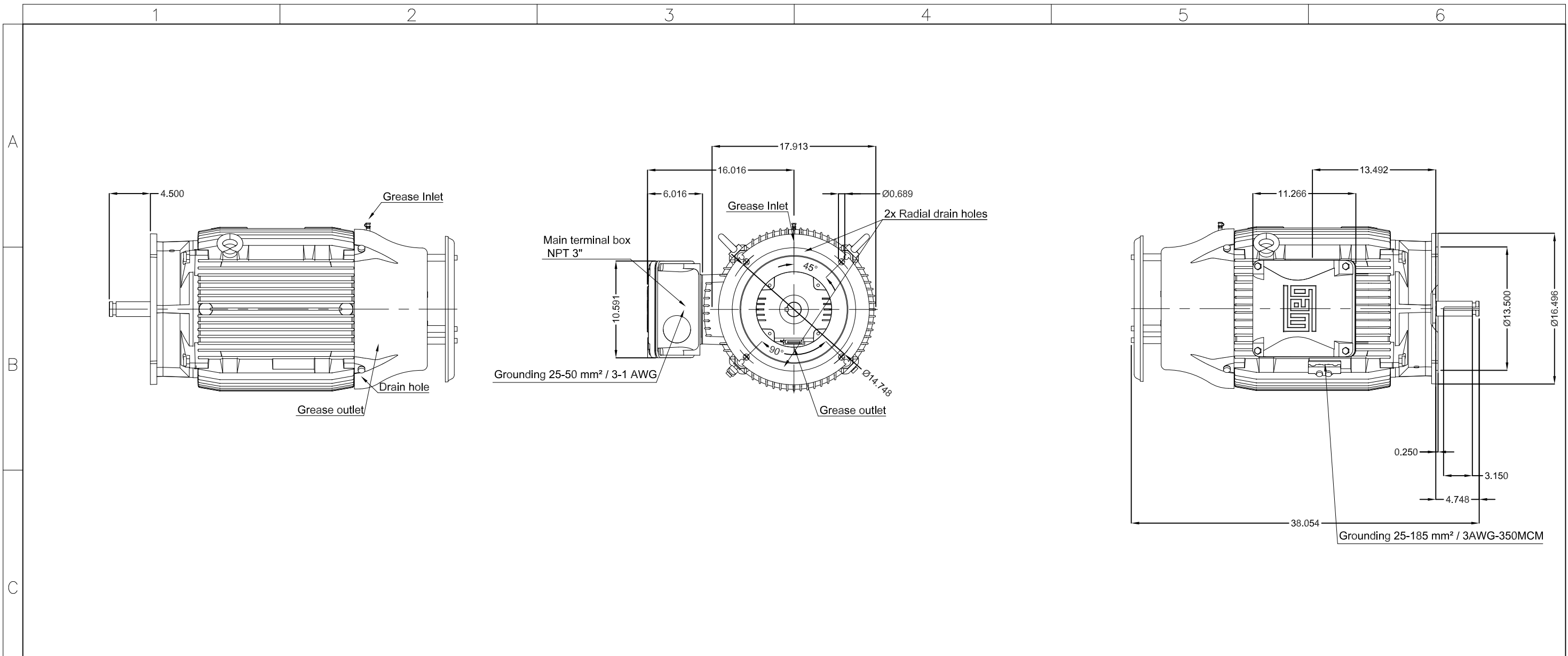
Product line : W22 P Base NEMA Premium Efficiency Three-Phase      Product code : 14004826



Performance : 575 V 60 Hz 6P

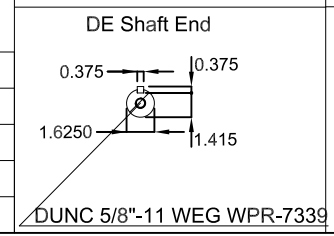
Rated current	: 45.9 A	Moment of inertia (J)	: 1.36 kgm <sup>2</sup>
LRC	: 6.4	Duty cycle	: Cont.(S1)
Rated torque	: 30.7 kgfm	Insulation class	: F
Locked rotor torque	: 200 %	Service factor	: 1.25
Breakdown torque	: 240 %	Temperature rise	: 80 K
Rated speed	: 1183 rpm	Design	: B

Rev.	Changes Summary	Performed	Checked	Date
Performed by			Page 2 / 2	Revision
Checked by				
Date	27/10/2024			



50 HP 06 Poles 60 Hz										A						
ECM										LOC	SUMMARY OF MODIFICATIONS	EXECUTED	CHECKED	RELEASED	DATE	VER
EXECUTED	HYBRISUSER	THREE PH. MOTOR W22 P. BASE NEMA PREM. EFF.		PREVIEW		WDD		00		SHEET		/		WEG		
CHECKED		FRAME 364/5HP IP55 TEFC		WDD		00		SHEET		/		WEG	A3			
RELEASED				WDD		00		SHEET		/		WEG	A3			
REL. DATE				WDD		00		SHEET		/		WEG	A3			

Without vertical jackscrews  
 Color RAL 5009  
 Painting plan 203A  
 Mounting NEMA W-6  
 Mounting V1



DUNC 5/8"-11 WEG WPR-7339