

DATA SHEET

Three Phase Induction Motor - Squirrel Cage



Customer :

Product line : Three-Phase

Product code : 13997241

Frame	: 56C	Cooling method	: IC01 - ODP
Insulation class	: F	Mounting	: F-1
Duty cycle	: Cont.(S1)	Rotation ¹	: Both (CW and CCW)
Ambient temperature	: -20°C to +40°C	Starting method	: Direct On Line
Altitude	: 1000 m.a.s.l.	Approx. weight ³	: 12.4 kg
Design	: A	Moment of inertia (J)	: 0.0036 kgm ²

Output [HP]	1	1	1
Poles	4	4	4
Frequency [Hz]	60	50	50
Rated voltage [V]	230/460	190/380	220/415
Rated current [A]	3.14/1.57	3.54/1.77	3.34/1.77
L. R. Amperes [A]	23.9/11.9	20.9/10.4	22.0/11.7
LRC [A]	7.6x(Code L)	5.9x(Code H)	6.6x(Code K)
No load current [A]	2.20/1.10	2.09/1.05	2.42/1.28
Rated speed [RPM]	1760	1440	1450
Slip [%]	2.22	4.00	3.33
Rated torque [kgfm]	0.412	0.504	0.501
Locked rotor torque [%]	280	180	229
Breakdown torque [%]	320	250	300
Service factor		1.15	1.15
Temperature rise	80 K	80 K	80 K
Locked rotor time	30s (cold) 17s (hot)	32s (cold) 18s (hot)	27s (cold) 15s (hot)
Noise level ²	52.0 dB(A)	49.0 dB(A)	49.0 dB(A)
Efficiency (%)	25%		
	50%	78.5	76.1
	75%	82.5	79.9
	100%	83.5	80.6
Power Factor	25%		
	50%	0.49	0.49
	75%	0.63	0.64
	100%	0.72	0.73

Bearing type	: 6204 ZZ	6202 ZZ	Foundation loads
	: Without	Without	
Sealing	: Bearing Seal	Bearing Seal	Max. traction : 42 kgf
Lubrication interval	: -	-	Max. compression : 54 kgf
Lubricant amount	: -	-	
Lubricant type	: Mobil Polyrex EM		

Notes

USABLE @208V 3.47A SF 1.00 SFA 3.47A

This revision replaces and cancel the previous one, which must be eliminated.

- (1) Looking the motor from the shaft end.
- (2) Measured at 1m and with tolerance of +3dB(A).
- (3) Approximate weight subject to changes after manufacturing process.
- (4) At 100% of full load.

These are average values based on tests with sinusoidal power supply, subject to the tolerances stipulated in NEMA MG-1.

Rev.	Changes Summary	Performed	Checked	Date
Performed by				
Checked by				
Date	11/05/2022			

Page 1 / 4
Revision

LOAD PERFORMANCE CURVE

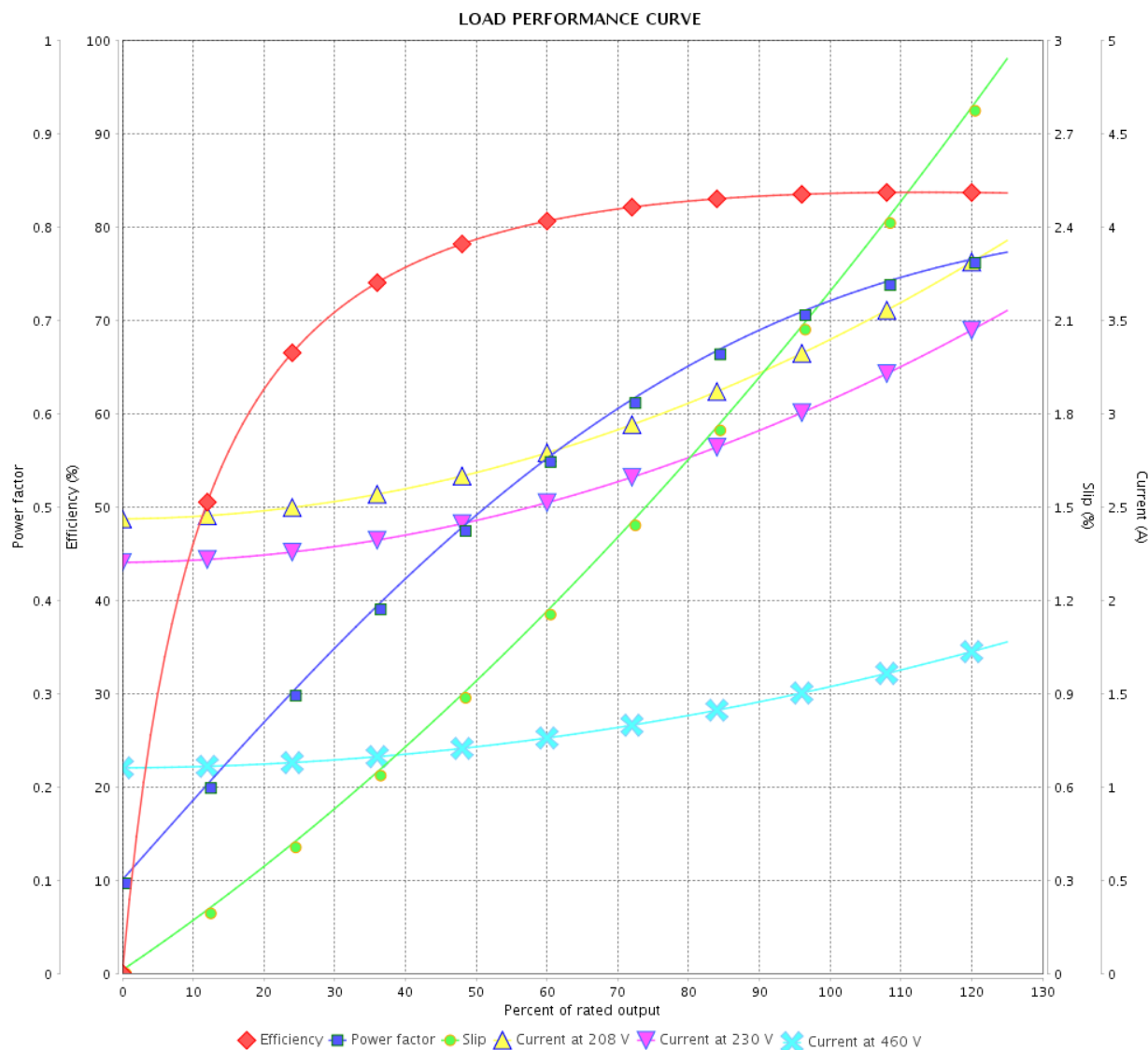
Three Phase Induction Motor - Squirrel Cage



Customer :

Product line : Three-Phase

Product code : 13997241



Performance : 230/460 V 60 Hz 4P

Rated current : 3.14/1.57 A
 LRC : 7.6
 Rated torque : 0.412 kgfm
 Locked rotor torque : 280 %
 Breakdown torque : 320 %
 Rated speed : 1760 rpm

Moment of inertia (J) : 0.0036 kgm²
 Duty cycle : Cont.(S1)
 Insulation class : F
 Service factor :
 Temperature rise : 80 K
 Design : A

Rev.	Changes Summary		Performed	Checked	Date
Performed by				Page	Revision
Checked by				2 / 4	
Date					

LOAD PERFORMANCE CURVE

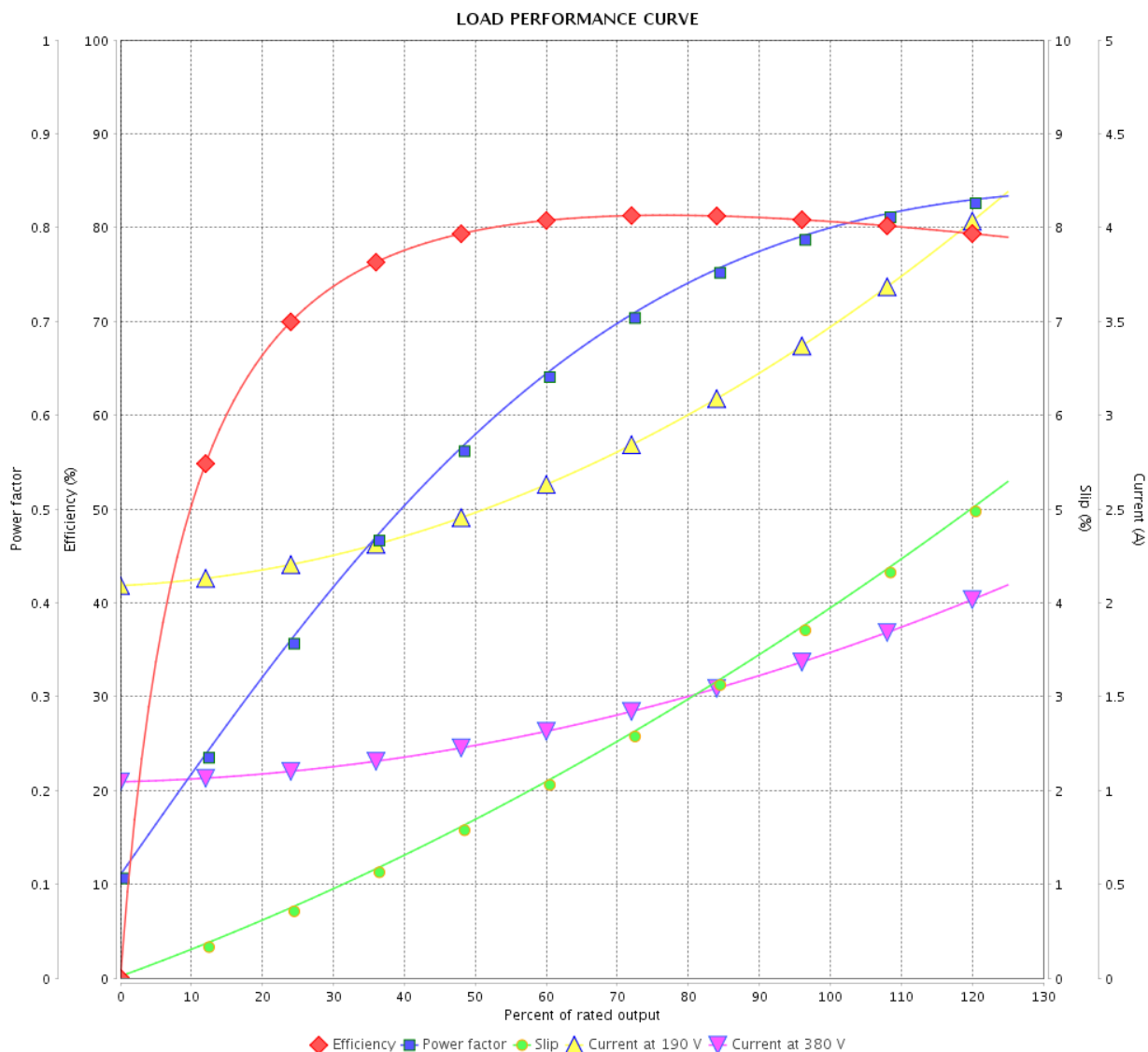
Three Phase Induction Motor - Squirrel Cage



Customer :

Product line : Three-Phase

Product code : 13997241



Performance : 190/380 V 50 Hz 4P

Rated current : 3.54/1.77 A
 LRC : 5.9
 Rated torque : 0.504 kgfm
 Locked rotor torque : 180 %
 Breakdown torque : 250 %
 Rated speed : 1440 rpm

Moment of inertia (J) : 0.0036 kgm²
 Duty cycle : Cont.(S1)
 Insulation class : F
 Service factor : 1.15
 Temperature rise : 80 K
 Design : A

Rev.	Changes Summary	Performed	Checked	Date
Performed by		Page 3 / 4Revision		
Checked by				
Date	11/05/2022			

LOAD PERFORMANCE CURVE

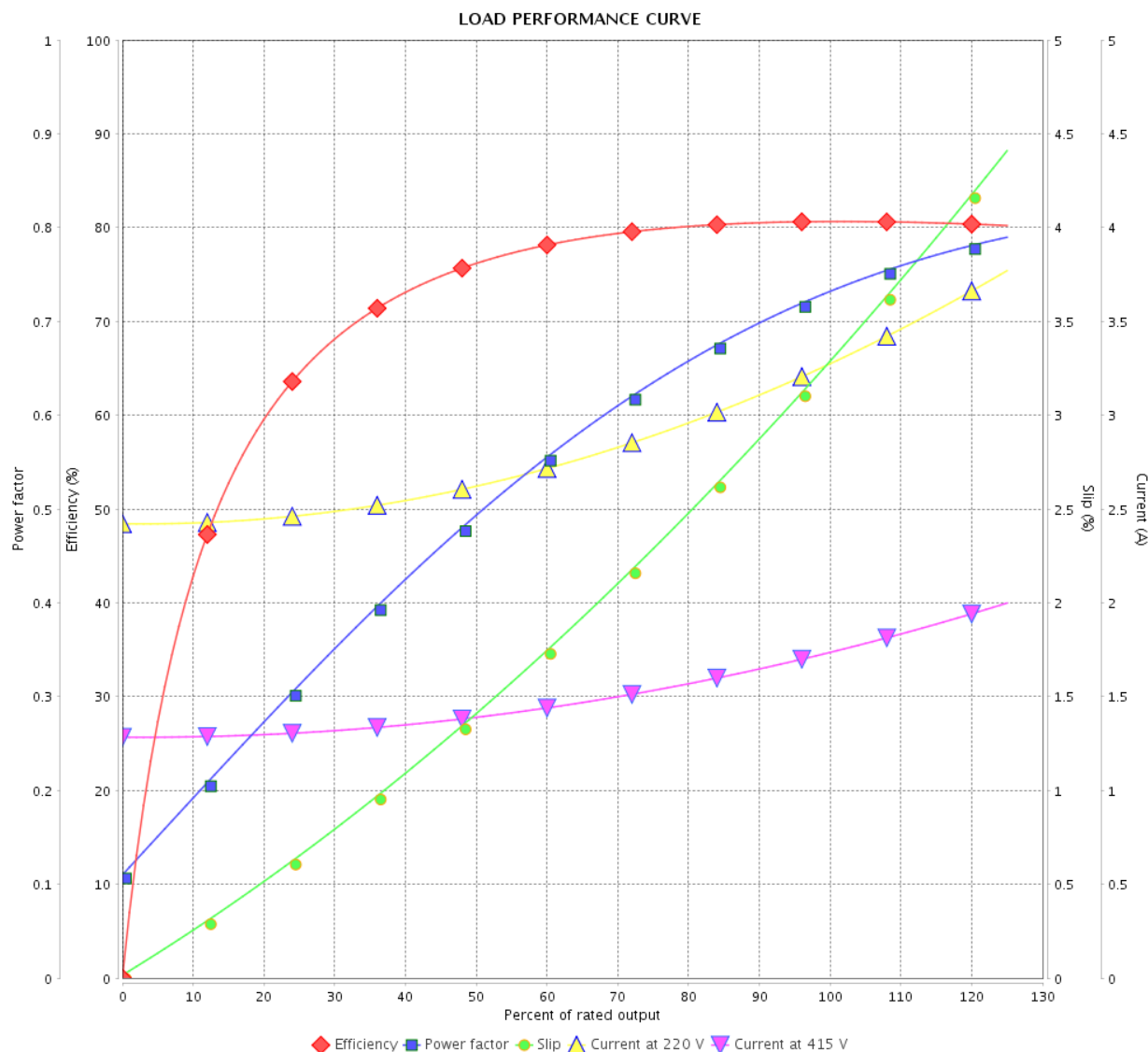
Three Phase Induction Motor - Squirrel Cage



Customer :

Product line : Three-Phase

Product code : 13997241

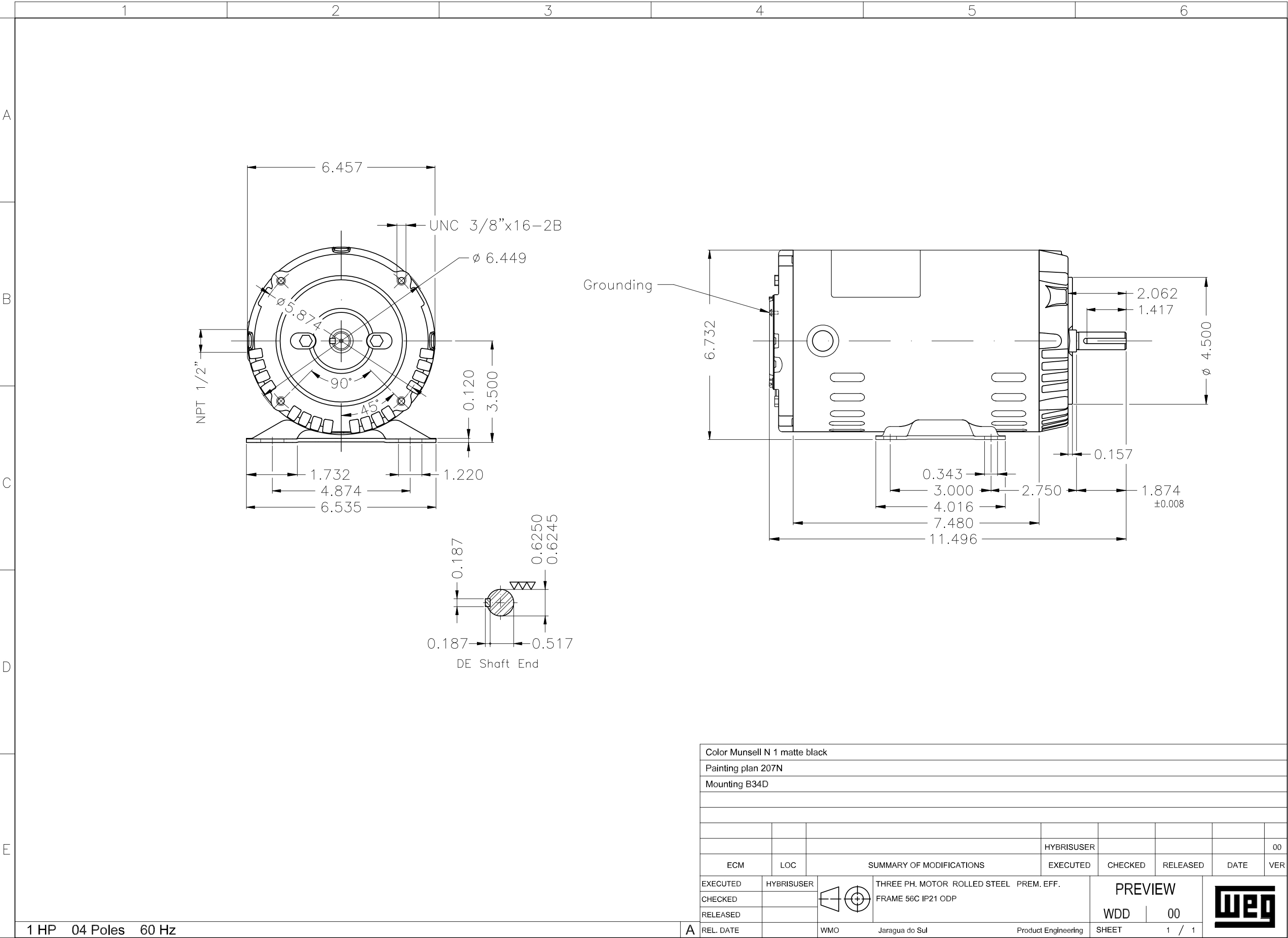


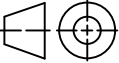

Performance : 220/415 V 50 Hz 4P

Rated current : 3.34/1.77 A
 LRC : 6.6
 Rated torque : 0.501 kgfm
 Locked rotor torque : 229 %
 Breakdown torque : 300 %
 Rated speed : 1450 rpm

Moment of inertia (J) : 0.0036 kgm²
 Duty cycle : Cont.(S1)
 Insulation class : F
 Service factor : 1.15
 Temperature rise : 80 K
 Design : A

Rev.	Changes Summary		Performed	Checked	Date
Performed by				Page	Revision
Checked by				4 / 4	
Date					



Color Munsell N 1 matte black									
Painting plan 207N									
Mounting B34D									
						HYBRISUSER			00
ECM	LOC	SUMMARY OF MODIFICATIONS				EXECUTED	CHECKED	RELEASED	DATE VER
EXECUTED	HYBRISUSER		THREE PH. MOTOR ROLLED STEEL PREM. EFF. FRAME 56C IP21 ODP			PREVIEW			
CHECKED									
RELEASED									
REL. DATE									
		WMO	Jaragua do Sul	Product Engineering	SHEET	1 / 1			