

DATA SHEET

Three Phase Induction Motor - Squirrel Cage



Customer :

Product line : Premium Efficiency Three-Phase Product code : 13989586

Frame	: W56C	Cooling method	: IC01 - ODP
Insulation class	: F	Mounting	: F-1
Duty cycle	: Cont.(S1)	Rotation ¹	: Both (CW and CCW)
Ambient temperature	: -20°C to +40°C	Starting method	: Direct On Line
Altitude	: 1000 m.a.s.l.	Approx. weight ³	: 8.8 kg
		Moment of inertia (J)	: 0.0019 kgm ²

Output [HP]	0.5	0.5	0.5
Poles	4	4	4
Frequency [Hz]	60	50	50
Rated voltage [V]	208-230/460	190-220/380	415
Rated current [A]	1.75-1.58/0.789	1.86-1.60/0.928	0.892
L. R. Amperes [A]	11.2-10.1/5.05	8.91-7.69/4.45	4.91
LRC [A]	6.4x(Code K)	4.8x(Code G)	5.5x(Code H)
No load current [A]	0.919-1.07/0.533	1.05-0.907/0.525	0.608
Rated speed [RPM]	1735	1400	1420
Slip [%]	3.61	6.67	5.33
Rated torque [kgfm]	0.209	0.259	0.256
Locked rotor torque [%]	250	180	220
Breakdown torque [%]	320	210	260
Service factor		1.15	1.15
Temperature rise	80 K	80 K	80 K
Locked rotor time	41s (cold) 23s (hot)	46s (cold) 26s (hot)	39s (cold) 22s (hot)
Noise level ²	50.0 dB(A)	49.0 dB(A)	49.0 dB(A)
Efficiency (%)	25%		
	50%	70.0	69.0
	75%	75.5	73.0
	100%	78.5	74.0
Power Factor	25%		
	50%	0.53	0.55
	75%	0.66	0.69
	100%	0.75	0.78

Bearing type	: Drive end	Non drive end	Foundation loads
	: 6203 ZZ	6202 ZZ	
Sealing	: Without	Without	Max. traction : 17 kgf
	: Bearing Seal	Bearing Seal	
Lubrication interval	: -	-	Max. compression : 25 kgf
Lubricant amount	: -	-	
Lubricant type	: Mobil Polyrex EM		

Notes
USABLE @208V SF 1.00

This revision replaces and cancel the previous one, which must be eliminated.

- (1) Looking the motor from the shaft end.
- (2) Measured at 1m and with tolerance of +3dB(A).
- (3) Approximate weight subject to changes after manufacturing process.
- (4) At 100% of full load.

These are average values based on tests with sinusoidal power supply, subject to the tolerances stipulated in NEMA MG-1.

Rev.	Changes Summary	Performed	Checked	Date
Performed by				
Checked by				
Date	11/05/2022			

Page 1 / 4
Revision

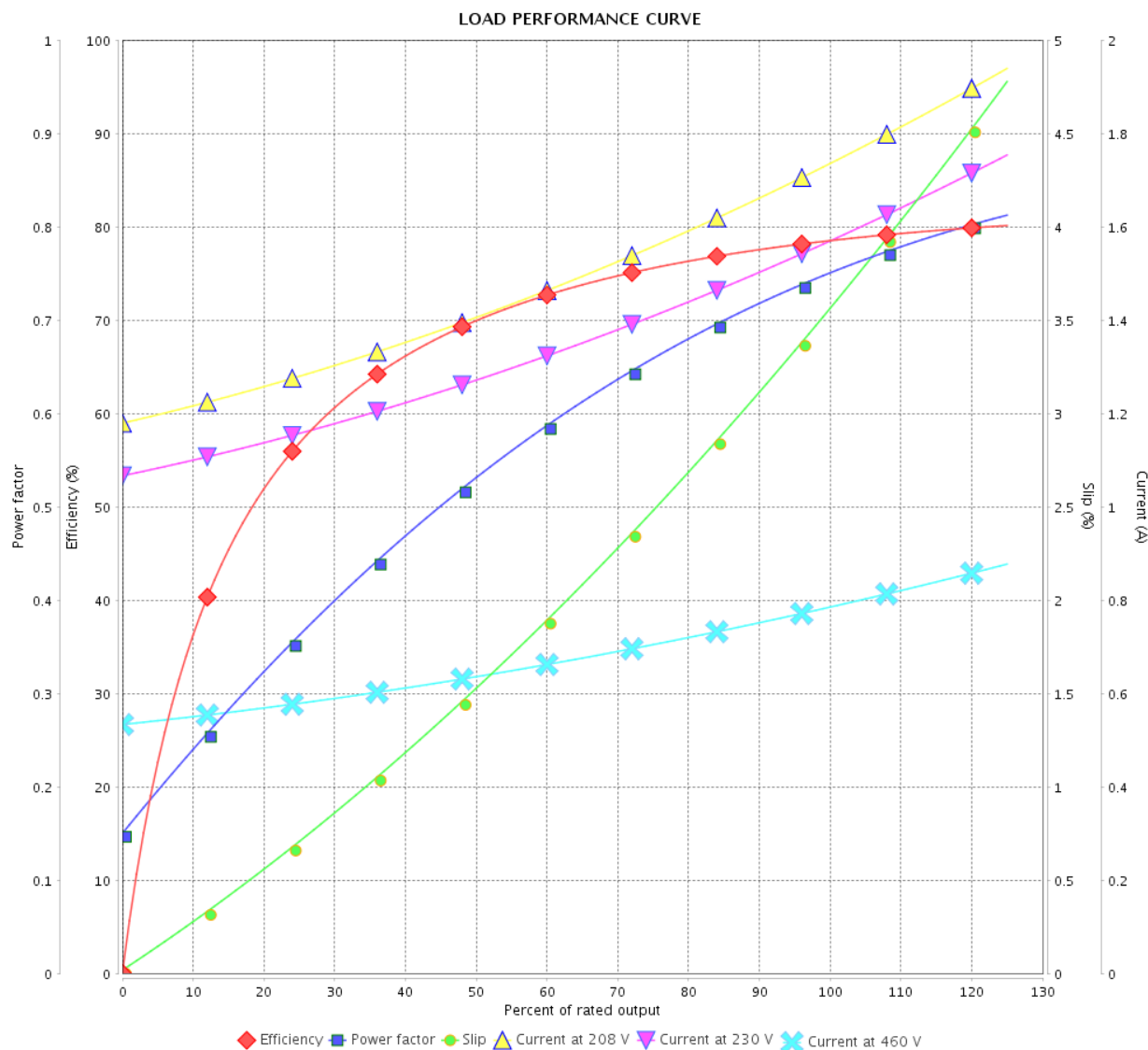
LOAD PERFORMANCE CURVE

Three Phase Induction Motor - Squirrel Cage



Customer :

Product line : Premium Efficiency Three-Phase Product code : 13989586



Performance : 208-230/460 V 60 Hz 4P

Rated current : 1.75-1.58/0.789 A
 LRC : 6.4
 Rated torque : 0.209 kgfm
 Locked rotor torque : 250 %
 Breakdown torque : 320 %
 Rated speed : 1735 rpm

Moment of inertia (J) : 0.0019 kgm²
 Duty cycle : Cont.(S1)
 Insulation class : F
 Service factor :
 Temperature rise : 80 K

Rev.	Changes Summary		Performed	Checked	Date
Performed by				Page	Revision
Checked by				2 / 4	
Date					

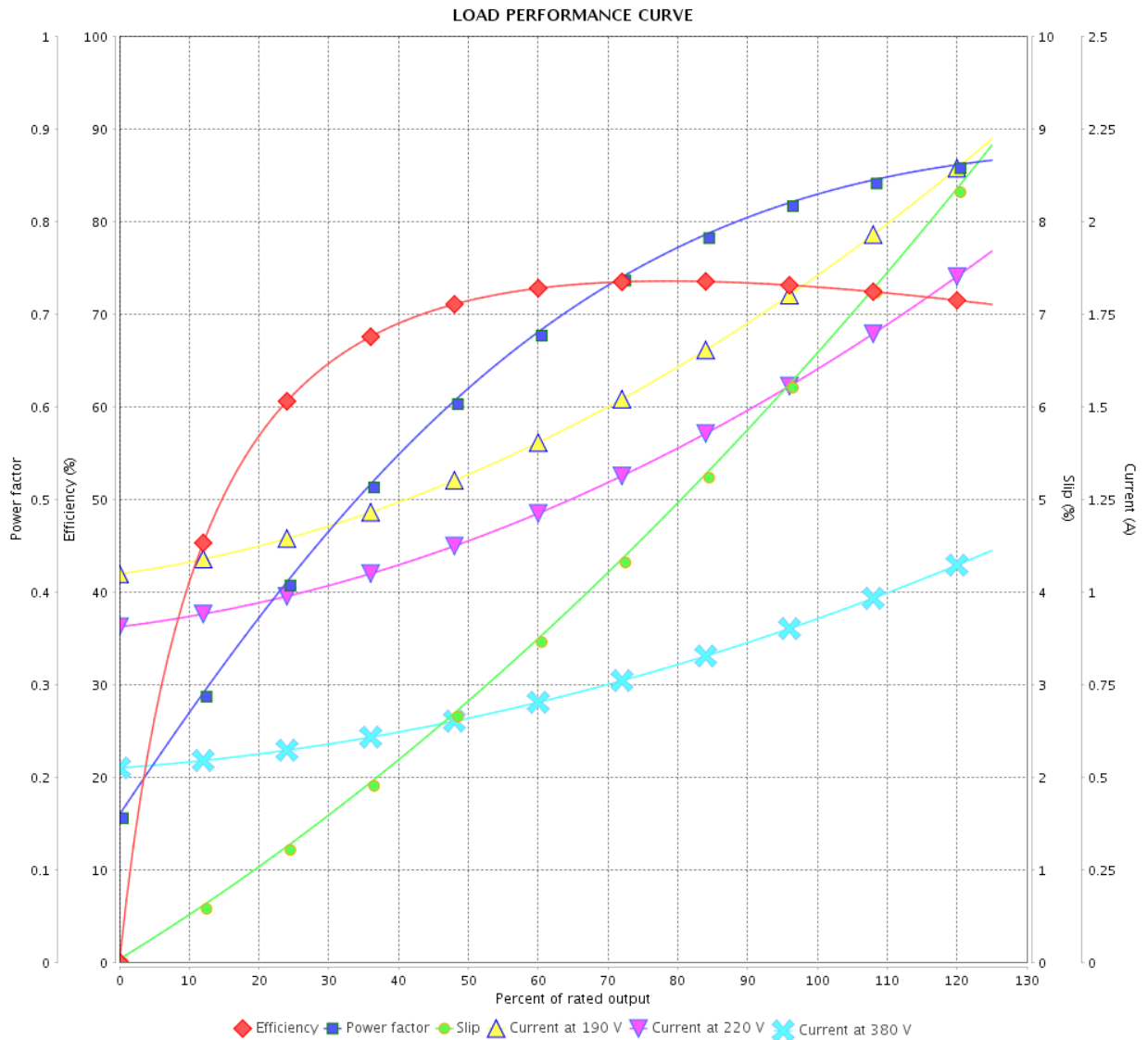
LOAD PERFORMANCE CURVE

Three Phase Induction Motor - Squirrel Cage



Customer :

Product line : Premium Efficiency Three-Phase Product code : 13989586



Performance : 190-220/380 V 50 Hz 4P

Rated current : 1.86-1.60/0.928 A
 LRC : 4.8
 Rated torque : 0.259 kgfm
 Locked rotor torque : 180 %
 Breakdown torque : 210 %
 Rated speed : 1400 rpm

Moment of inertia (J) : 0.0019 kgm²
 Duty cycle : Cont.(S1)
 Insulation class : F
 Service factor : 1.15
 Temperature rise : 80 K

Rev.	Changes Summary	Performed	Checked	Date
Performed by		Page 3 / 4		
Checked by				
Date	11/05/2022			
		Revision		

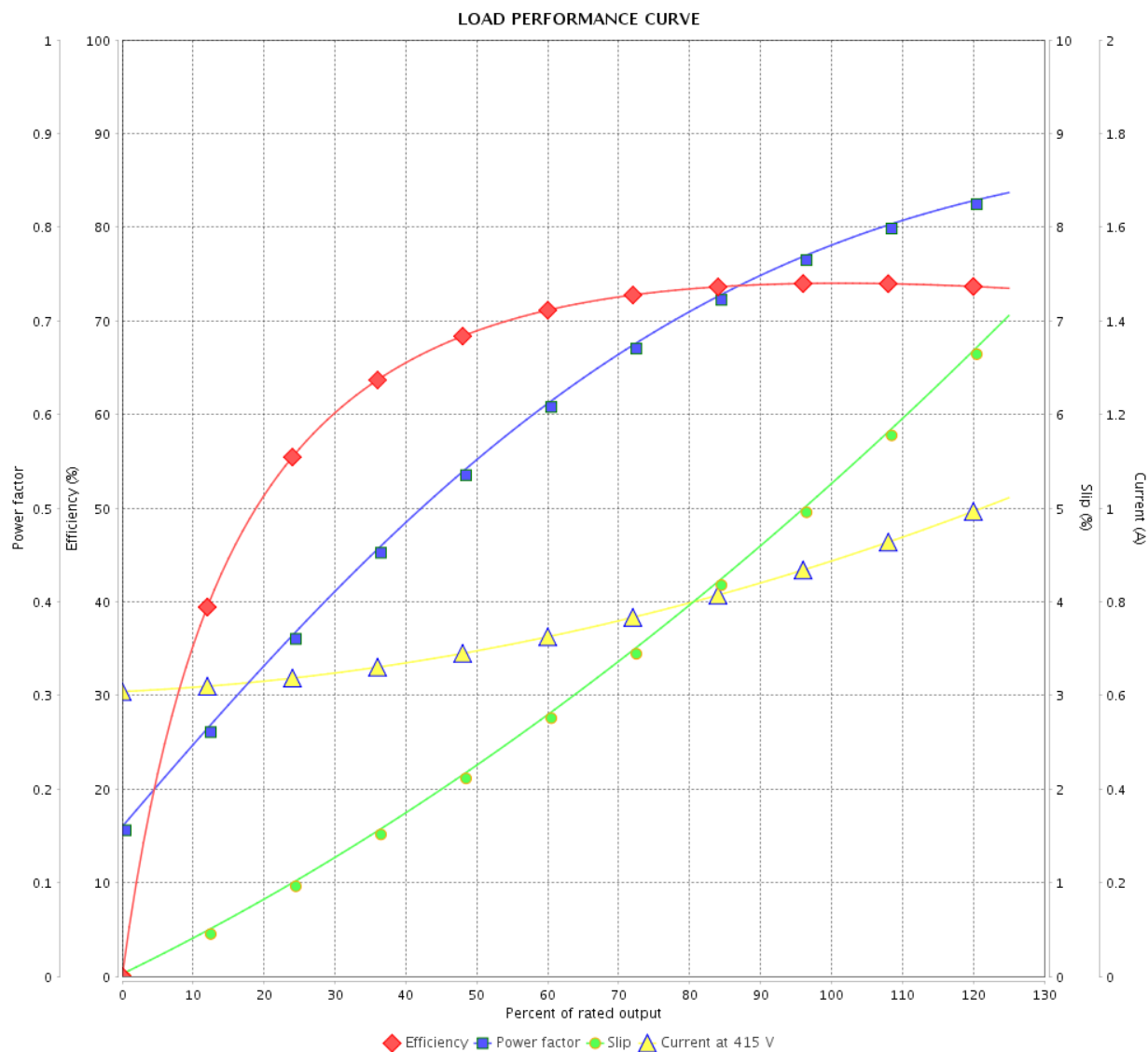
LOAD PERFORMANCE CURVE

Three Phase Induction Motor - Squirrel Cage



Customer :

Product line : Premium Efficiency Three-Phase Product code : 13989586

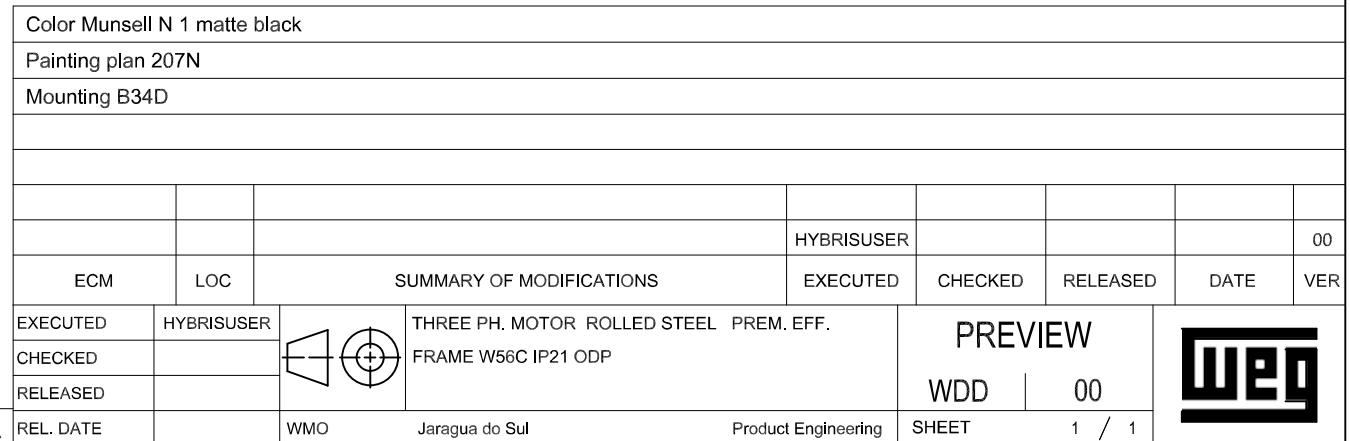
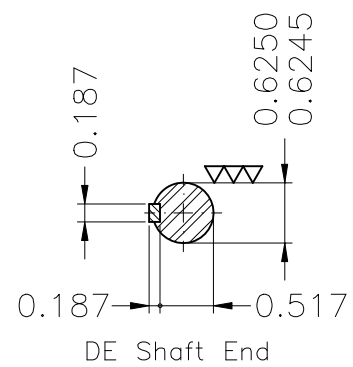


Performance : 415 V 50 Hz 4P

Rated current : 0.892 A
 LRC : 5.5
 Rated torque : 0.256 kgfm
 Locked rotor torque : 220 %
 Breakdown torque : 260 %
 Rated speed : 1420 rpm

Moment of inertia (J) : 0.0019 kgm²
 Duty cycle : Cont.(S1)
 Insulation class : F
 Service factor : 1.15
 Temperature rise : 80 K

Rev.	Changes Summary	Performed	Checked	Date
Performed by		Page 4 / 4Revision		
Checked by				
Date	11/05/2022			



WEG's property. Forbidden reproduction without previous authorization.