

# DATA SHEET

## Three Phase Induction Motor - Squirrel Cage



Customer	:			
Product line	: Three-Phase	Product code : 13989582		
Frame	: W56C	Cooling method : IC411 - TEFC		
Insulation class	: F	Mounting : F-1		
Duty cycle	: Cont.(S1)	Rotation <sup>1</sup> : Both (CW and CCW)		
Ambient temperature	: -20°C to +40°C	Starting method : Direct On Line		
Altitude	: 1000 m.a.s.l.	Approx. weight <sup>3</sup> : 9.9 kg		
Protection degree	: IP55	Moment of inertia (J) : 0.0022 kgm <sup>2</sup>		
Output [HP]		0.5		
Poles		4		
Frequency [Hz]		60		
Rated voltage [V]		575		
Rated current [A]		0.622		
L. R. Amperes [A]		3.98		
LRC [A]		6.4x(Code J)		
No load current [A]		0.397		
Rated speed [RPM]		1730		
Slip [%]		3.89		
Rated torque [kgfm]		0.210		
Locked rotor torque [%]		229		
Breakdown torque [%]		310		
Service factor		1.15		
Temperature rise		80 K		
Locked rotor time		36s (cold) 20s (hot)		
Noise level <sup>2</sup>		50.0 dB(A)		
Efficiency (%)	25%			
	50%	74.0		
	75%	77.0		
	100%	78.5		
Power Factor	25%			
	50%	0.54		
	75%	0.67		
	100%	0.76		
Bearing type	: <u>Drive end</u> 6203 ZZ <u>Non drive end</u> 6202 ZZ	Foundation loads		
Sealing	: V'Ring                    V'Ring	Max. traction : 16 kgf		
Lubrication interval	: -                                -	Max. compression : 25 kgf		
Lubricant amount	: -                                -			
Lubricant type	: Mobil Polyrex EM			
Notes				
<p>This revision replaces and cancel the previous one, which must be eliminated.</p> <p>(1) Looking the motor from the shaft end.</p> <p>(2) Measured at 1m and with tolerance of +3dB(A).</p> <p>(3) Approximate weight subject to changes after manufacturing process.</p> <p>(4) At 100% of full load.</p>		<p>These are average values based on tests with sinusoidal power supply, subject to the tolerances stipulated in NEMA MG-1.</p>		
Rev.	Changes Summary	Performed	Checked	Date
Performed by				
Checked by			Page	Revision
Date	11/05/2022		1 / 2	

# LOAD PERFORMANCE CURVE

Three Phase Induction Motor - Squirrel Cage

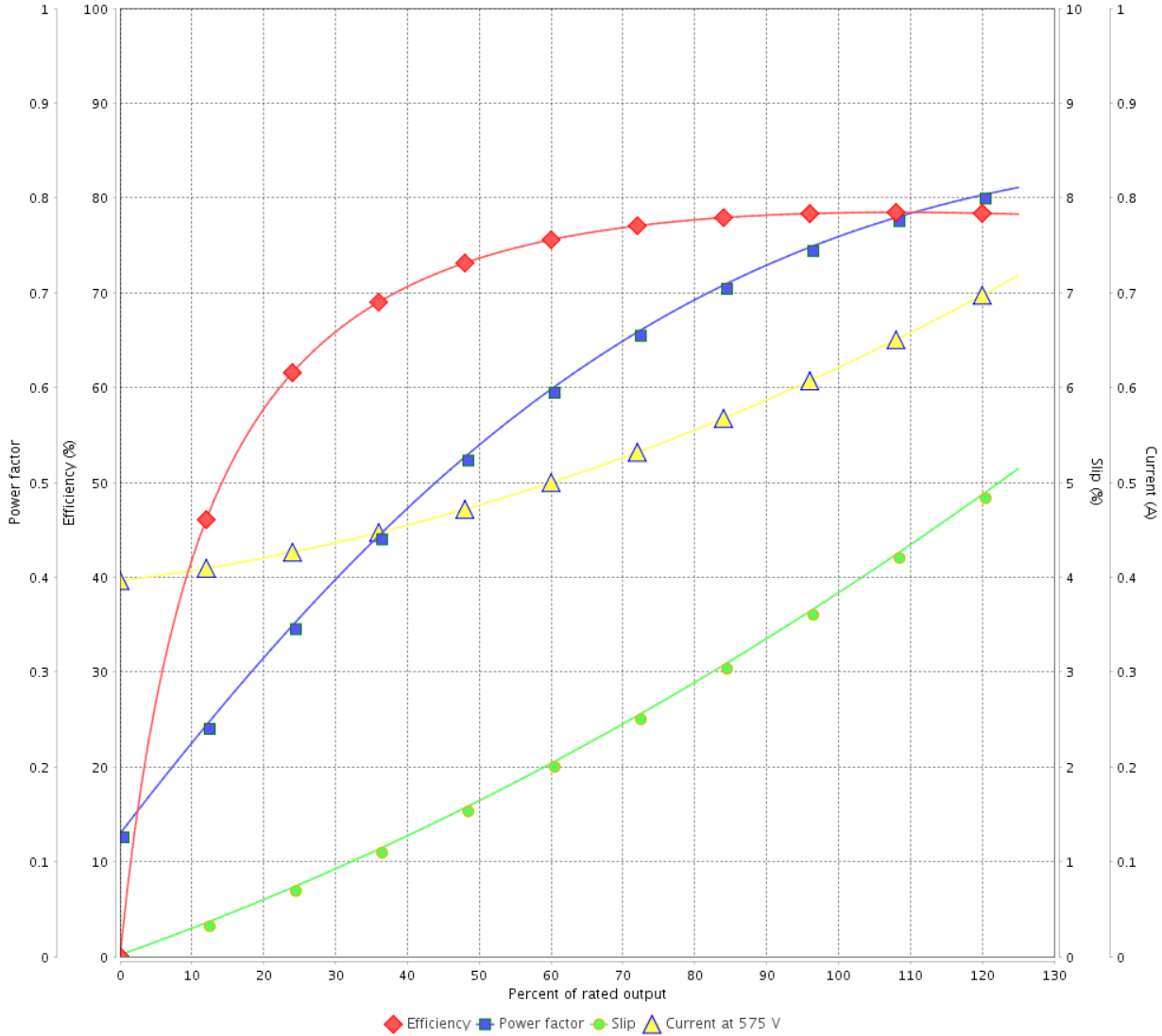


Customer :

Product line : Three-Phase

Product code : 13989582

LOAD PERFORMANCE CURVE

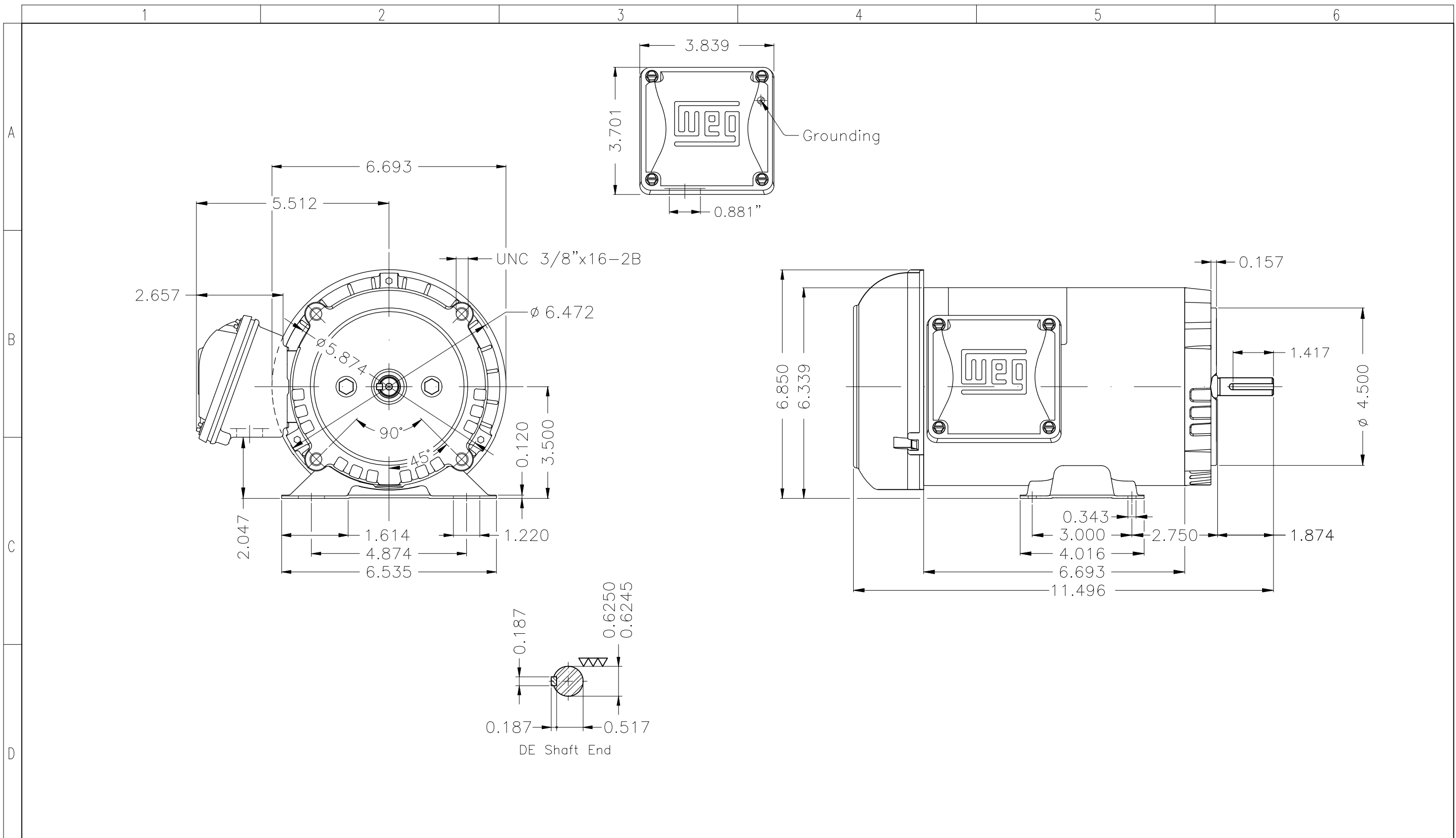


Performance : 575 V 60 Hz 4P

Rated current : 0.622 A  
 LRC : 6.4  
 Rated torque : 0.210 kgfm  
 Locked rotor torque : 229 %  
 Breakdown torque : 310 %  
 Rated speed : 1730 rpm

Moment of inertia (J) : 0.0022 kgm<sup>2</sup>  
 Duty cycle : Cont.(S1)  
 Insulation class : F  
 Service factor : 1.15  
 Temperature rise : 80 K

Rev.	Changes Summary	Performed	Checked	Date
Performed by			Page 2 / 2	Revision
Checked by				
Date	11/05/2022			



A

B

C

D

E

Dimensions in inches

XME A3

Color Munsell N 1 matte black  
 Painting plan 207N  
 Mounting B34D

ECM	LOC	SUMMARY OF MODIFICATIONS	EXECUTED	CHECKED	RELEASED	DATE	VER
EXECUTED	HYBRISUSER	THREE PH. MOTOR ROLLED STEEL PREM. EFF. FRAME W56C IP55 TEFC					
CHECKED							
RELEASED							
REL. DATE	WMO	Jaragua do Sul	Product Engineering				

HYBRISUSER 00  
 WDD | 00  
 SHEET 1 / 1



0.5 HP 04 Poles 60 Hz

A