

DATA SHEET

Single Phase Induction Motor - Squirrel Cage



| | | | | |
|--|---|--|---------|----------|
| Customer | : | | | |
| Product line | : Single-Phase | Product code : 13988321 | | |
| Frame | : 56 | Cooling method : IC01 - ODP | | |
| Insulation class | : F | Mounting : F-1 | | |
| Duty cycle | : Cont.(S1) | Rotation ¹ : Both (CW and CCW) | | |
| Ambient temperature | : -20°C to +40°C | Starting method : Direct On Line | | |
| Altitude | : 1000 m.a.s.l. | Approx. weight ³ : 16.0 kg | | |
| Design | : L | Moment of inertia (J) : 0.0025 kgm ² | | |
| Output [HP] | | 1.5 | | |
| Poles | | 2 | | |
| Frequency [Hz] | | 60 | | |
| Rated voltage [V] | | 115/208-230 | | |
| Rated current [A] | | 17.2/9.51-8.60 | | |
| L. R. Amperes [A] | | 126/69.4-62.8 | | |
| LRC [A] | | 7.3x(Code J) | | |
| No load current [A] | | 11.0/4.74-5.50 | | |
| Rated speed [RPM] | | 3500 | | |
| Slip [%] | | 2.78 | | |
| Rated torque [kgfm] | | 0.311 | | |
| Locked rotor torque [%] | | 250 | | |
| Breakdown torque [%] | | 270 | | |
| Service factor | | | | |
| Temperature rise | | 80 K | | |
| Locked rotor time | | 10s (cold) 6s (hot) | | |
| Noise level ² | | 58.0 dB(A) | | |
| Efficiency (%) | 25% | | | |
| | 50% | 65.0 | | |
| | 75% | 70.0 | | |
| | 100% | 72.0 | | |
| Power Factor | 25% | | | |
| | 50% | 0.57 | | |
| | 75% | 0.69 | | |
| | 100% | 0.77 | | |
| Bearing type | : <u>Drive end</u> 6204 ZZ <u>Non drive end</u> 6202 ZZ | Foundation loads | | |
| Sealing | : Without Without Bearing Seal Bearing Seal | Max. traction : 18 kgf Max. compression : 34 kgf | | |
| Lubrication interval | : - - | | | |
| Lubricant amount | : - - | | | |
| Lubricant type | : Mobil Polyrex EM | | | |
| Notes | | | | |
| This revision replaces and cancel the previous one, which must be eliminated. (1) Looking the motor from the shaft end. (2) Measured at 1m and with tolerance of +3dB(A). (3) Approximate weight subject to changes after manufacturing process. (4) At 100% of full load. | | These are average values based on tests with sinusoidal power supply, subject to the tolerances stipulated in NEMA MG-1. | | |
| Rev. | Changes Summary | Performed | Checked | Date |
| Performed by | | | | |
| Checked by | | | Page | Revision |
| Date | 11/05/2022 | | 1 / 2 | |

LOAD PERFORMANCE CURVE

Single Phase Induction Motor - Squirrel Cage

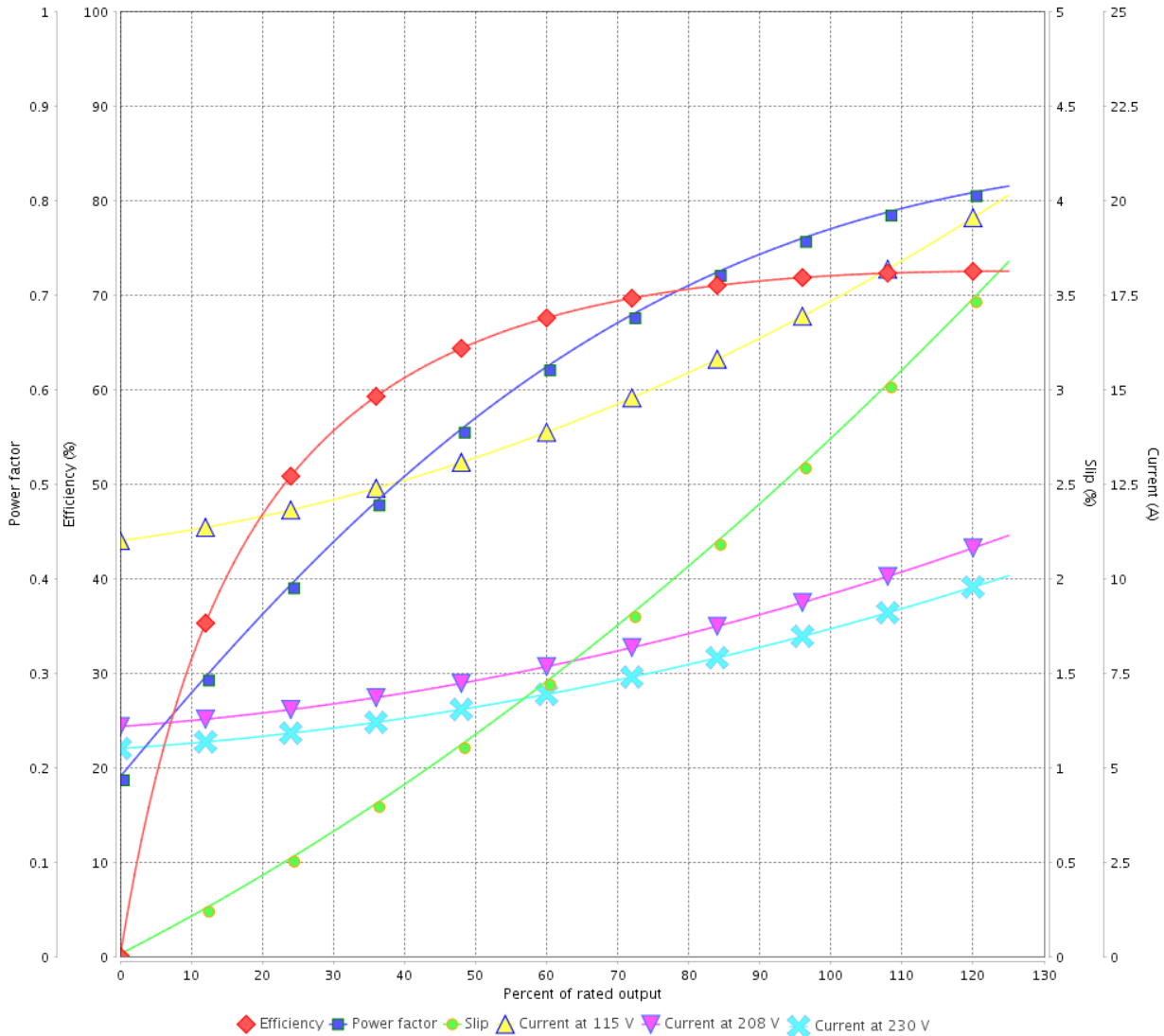


Customer :

Product line : Single-Phase

Product code : 13988321

LOAD PERFORMANCE CURVE



Performance : 115/208-230 V 60 Hz 2P

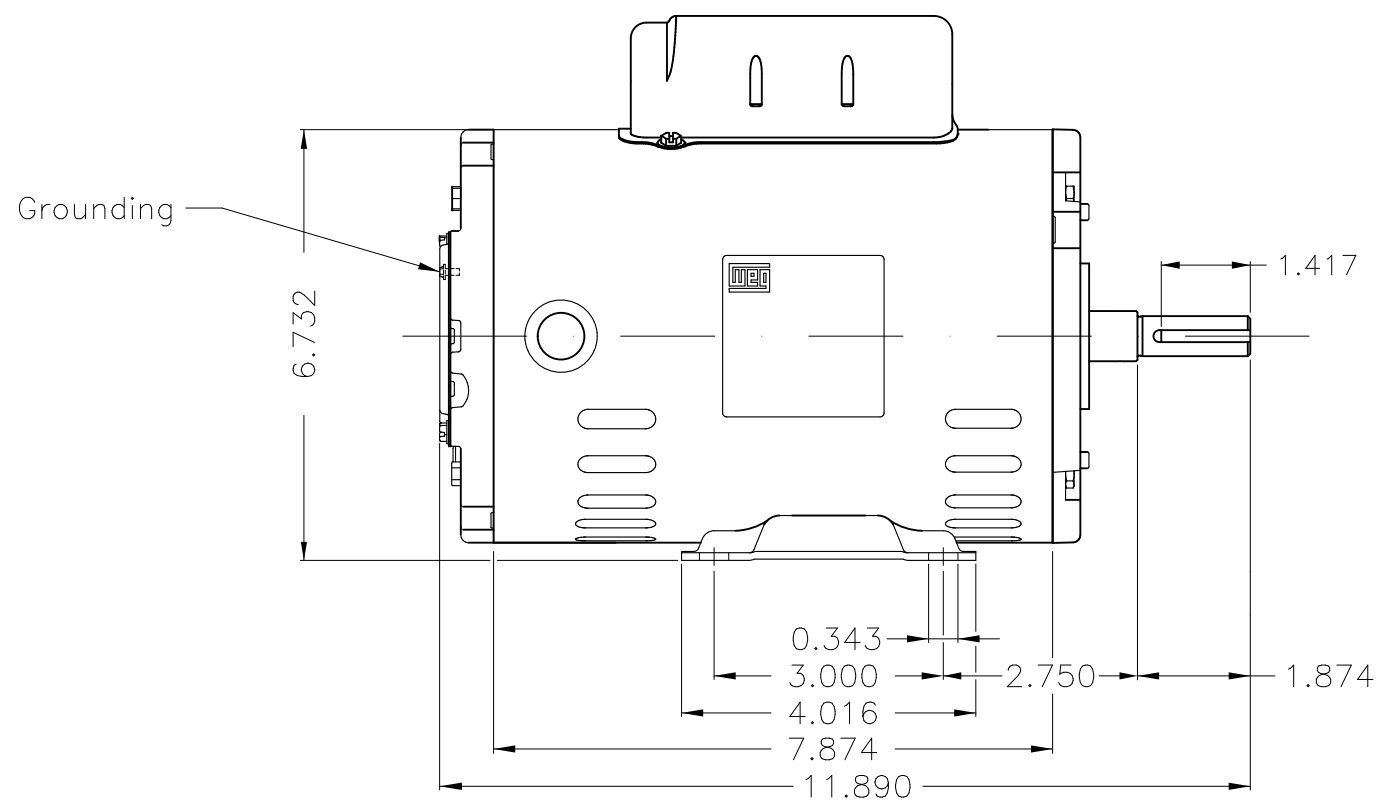
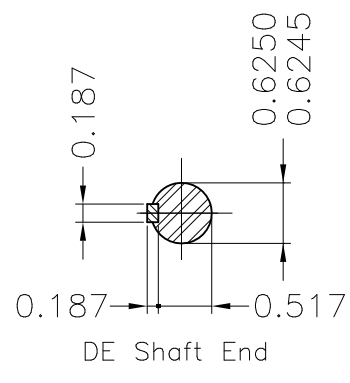
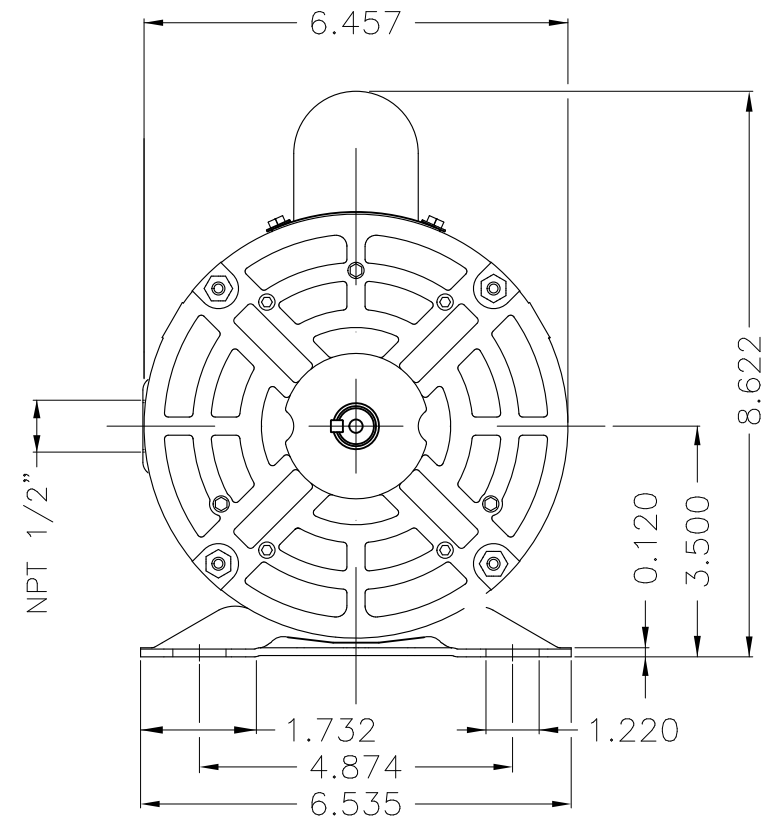
Rated current : 17.2/9.51-8.60 A
 LRC : 7.3
 Rated torque : 0.311 kgfm
 Locked rotor torque : 250 %
 Breakdown torque : 270 %
 Rated speed : 3500 rpm

Moment of inertia (J) : 0.0025 kgm²
 Duty cycle : Cont.(S1)
 Insulation class : F
 Service factor :
 Temperature rise : 80 K
 Design : L

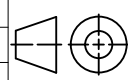

| Rev. | Changes Summary | Performed | Checked | Date |
|--------------|-----------------|-----------|---------------|----------|
| | | | | |
| Performed by | | | Page 2 / 2 | Revision |
| Checked by | | | | |
| Date | 11/05/2022 | | | |

1 2 3 4 5 6

A
B
C
D
E



Grounding

| | | | | | | | |
|-------------------------------|------------|--|----------------|----------------------------|---------|---|-------|
| Color Munsell N 1 matte black | | | | | | | |
| Painting plan 207N | | | | | | | |
| Mounting F-1/B3R(D) | | | | | | | |
| | | | | | | | |
| | | | | | | | |
| | | | HYBRISUSER | | 00 | | |
| ECM | LOC | SUMMARY OF MODIFICATIONS | | EXECUTED | CHECKED | RELEASED | |
| EXECUTED | HYBRISUSER |  SINGLE PH. MOTOR ROLLED STEEL FRAME 56 IP21 ODP | | PREVIEW WDD 00 | |  | |
| CHECKED | | | | SHEET | | | 1 / 1 |
| RELEASED | | | | | | | |
| REL. DATE | | WMO | Jaragua do Sul | Product Engineering | | | |

1.5 HP 02 Poles 60 Hz

A

Dimensions in inches XME A3