

DATA SHEET

Single Phase Induction Motor - Squirrel Cage



Customer	:			
Product line	: Single-Phase	Product code : 13988237		
Frame	: 56HC	Cooling method : IC01 - ODP		
Insulation class	: F	Mounting : F-1		
Duty cycle	: Cont.(S1)	Rotation ¹ : Both (CW and CCW)		
Ambient temperature	: -20°C to +40°C	Starting method : Direct On Line		
Altitude	: 1000 m.a.s.l.	Approx. weight ² : 18.3 kg		
Design	: L	Moment of inertia (J) : 0.0032 kgm ²		
Output [HP]		2		
Poles		2		
Frequency [Hz]		60		
Rated voltage [V]		115/208-230		
Rated current [A]		21.8/12.1-10.9		
L. R. Amperes [A]		170/94.4-85.0		
LRC [A]		7.8x(Code J)		
No load current [A]		12.6/5.43-6.30		
Rated speed [RPM]		3490		
Slip [%]		3.06		
Rated torque [kgfm]		0.416		
Locked rotor torque [%]		250		
Breakdown torque [%]		260		
Service factor				
Temperature rise		80 K		
Locked rotor time		10s (cold) 6s (hot)		
Noise level ²		58.0 dB(A)		
Efficiency (%)	25%			
	50%	69.0		
	75%	72.0		
	100%	75.0		
Power Factor	25%			
	50%	0.60		
	75%	0.72		
	100%	0.80		
Bearing type	: <u>Drive end</u> 6204 ZZ <u>Non drive end</u> 6202 ZZ	Foundation loads		
Sealing	: Without Bearing Seal Without Bearing Seal	Max. traction : 25 kgf		
Lubrication interval	: - -	Max. compression : 43 kgf		
Lubricant amount	: - -			
Lubricant type	: Mobil Polyrex EM			
Notes				
<p>This revision replaces and cancel the previous one, which must be eliminated.</p> <p>(1) Looking the motor from the shaft end.</p> <p>(2) Measured at 1m and with tolerance of +3dB(A).</p> <p>(3) Approximate weight subject to changes after manufacturing process.</p> <p>(4) At 100% of full load.</p>		<p>These are average values based on tests with sinusoidal power supply, subject to the tolerances stipulated in NEMA MG-1.</p>		
Rev.	Changes Summary	Performed	Checked	Date
Performed by				
Checked by			Page	Revision
Date	11/05/2022		1 / 2	

LOAD PERFORMANCE CURVE

Single Phase Induction Motor - Squirrel Cage

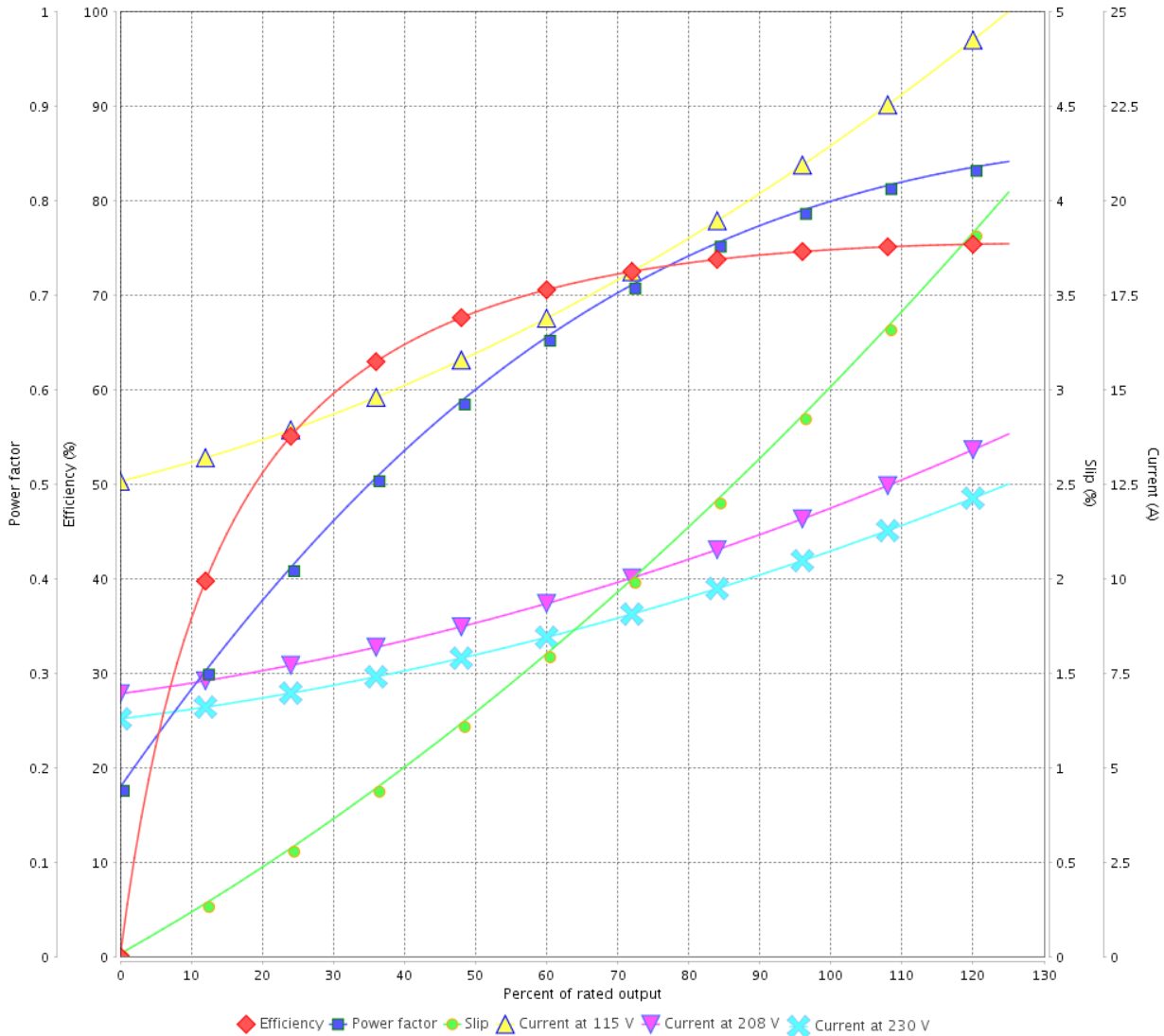


Customer :

Product line : Single-Phase

Product code : 13988237

LOAD PERFORMANCE CURVE



Performance : 115/208-230 V 60 Hz 2P

Rated current : 21.8/12.1-10.9 A
 LRC : 7.8
 Rated torque : 0.416 kgfm
 Locked rotor torque : 250 %
 Breakdown torque : 260 %
 Rated speed : 3490 rpm

Moment of inertia (J) : 0.0032 kgm²
 Duty cycle : Cont.(S1)
 Insulation class : F
 Service factor :
 Temperature rise : 80 K
 Design : L

Rev.	Changes Summary	Performed	Checked	Date
Performed by			Page 2 / 2	Revision
Checked by				
Date	11/05/2022			

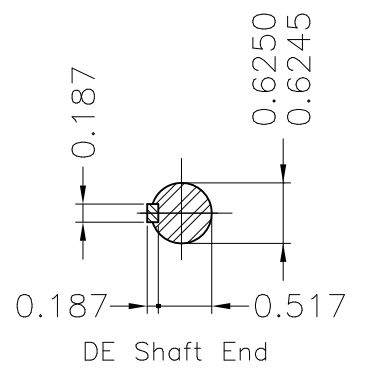
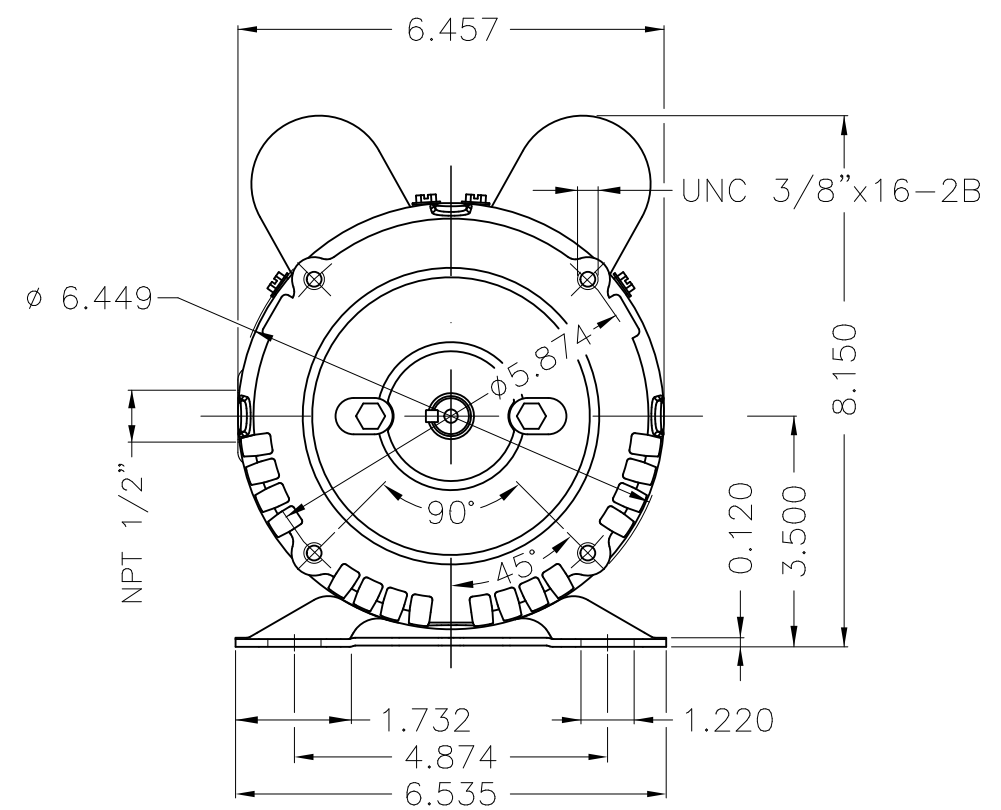
A

B

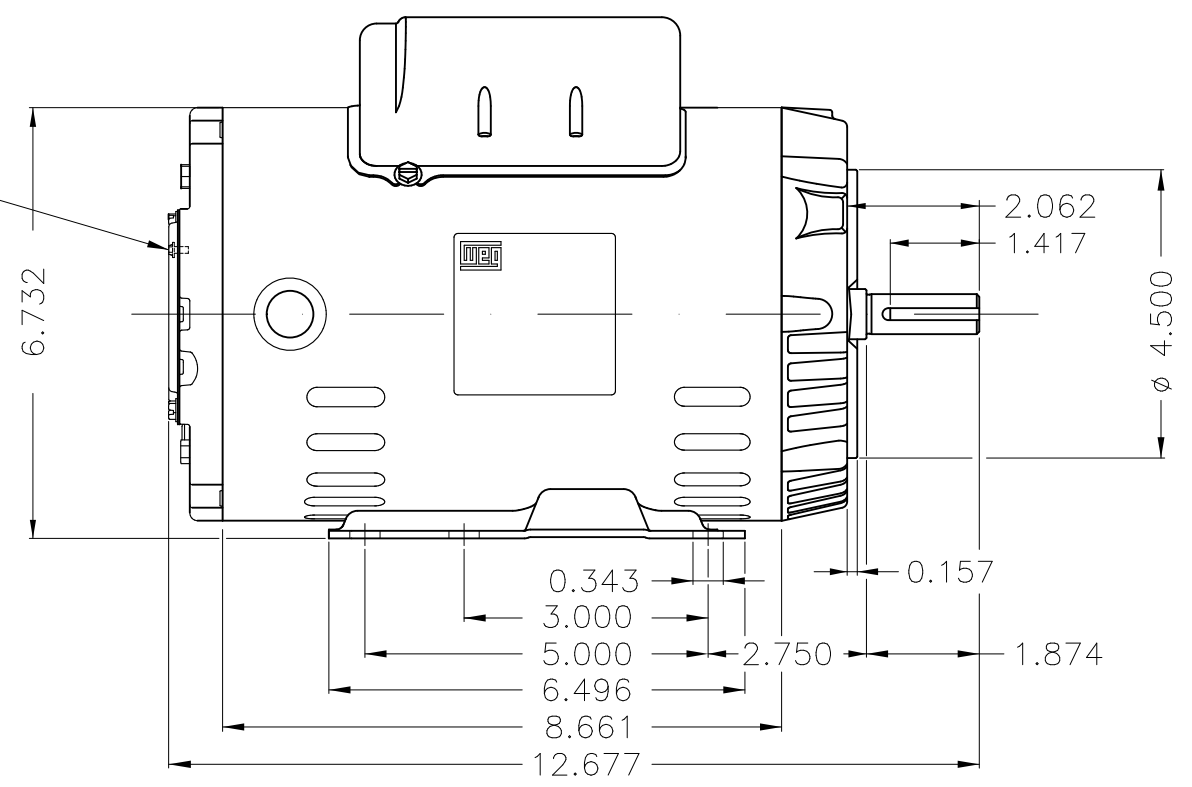
C

D


E



Grounding



Dimensions in inches

Color Munsell N 1 matte black						
Painting plan 207N						
Mounting F-1/B34R(D)						
					HYBRISUSER	00
ECM	LOC	SUMMARY OF MODIFICATIONS		EXECUTED	CHECKED	RELEASED DATE VER
EXECUTED	HYBRISUSER	SINGLE PH. MOTOR ROLLED STEEL		PREVIEW		
CHECKED		FRAME 56HC IP21 ODP		WDD 00		
RELEASED				SHEET 1 / 1		
REL. DATE		WMO	Jaragua do Sul	Product Engineering		

2 HP 02 Poles 60 Hz

A