

DATA SHEET

Three Phase Induction Motor - Squirrel Cage



Customer :				
Product line		: Premium Efficiency Three-Phase	Product code :	13989769
Frame	: 56C	Cooling method	: IC01 - ODP	
Insulation class	: F	Mounting	: F-1	
Duty cycle	: Cont.(S1)	Rotation ¹	: Both (CW and CCW)	
Ambient temperature	: -20°C to +40°C	Starting method	: Direct On Line	
Altitude	: 1000 m.a.s.l.	Approx. weight ³	: 10.9 kg	
		Moment of inertia (J)	: 0.0030 kgm ²	
Output [HP]	0.75			
Poles	4			
Frequency [Hz]	60			
Rated voltage [V]	575			
Rated current [A]	0.920			
L. R. Amperes [A]	6.72			
LRC [A]	7.3x(Code K)			
No load current [A]	0.640			
Rated speed [RPM]	1760			
Slip [%]	2.22			
Rated torque [kgfm]	0.309			
Locked rotor torque [%]	250			
Breakdown torque [%]	300			
Service factor	1.15			
Temperature rise	80 K			
Locked rotor time	37s (cold) 21s (hot)			
Noise level ²	52.0 dB(A)			
Efficiency (%)	25%			
	50%	74.0		
	75%	78.5		
	100%	81.1		
Power Factor	25%			
	50%	0.52		
	75%	0.65		
	100%	0.74		
Bearing type	: Drive end 6203 ZZ Non drive end 6202 ZZ	Foundation loads		
Sealing	: Without Without Bearing Seal Bearing Seal	Max. traction : 24 kgf		
		Max. compression : 35 kgf		
Lubrication interval	: - -			
Lubricant amount	: - -			
Lubricant type	: Mobil Polyrex EM			
Notes				
This revision replaces and cancel the previous one, which must be eliminated. (1) Looking the motor from the shaft end. (2) Measured at 1m and with tolerance of +3dB(A). (3) Approximate weight subject to changes after manufacturing process. (4) At 100% of full load.		These are average values based on tests with sinusoidal power supply, subject to the tolerances stipulated in NEMA MG-1.		
Rev.	Changes Summary		Performed	Checked
Performed by			Page 1 / 2	Revision
Checked by				
Date	11/05/2022			

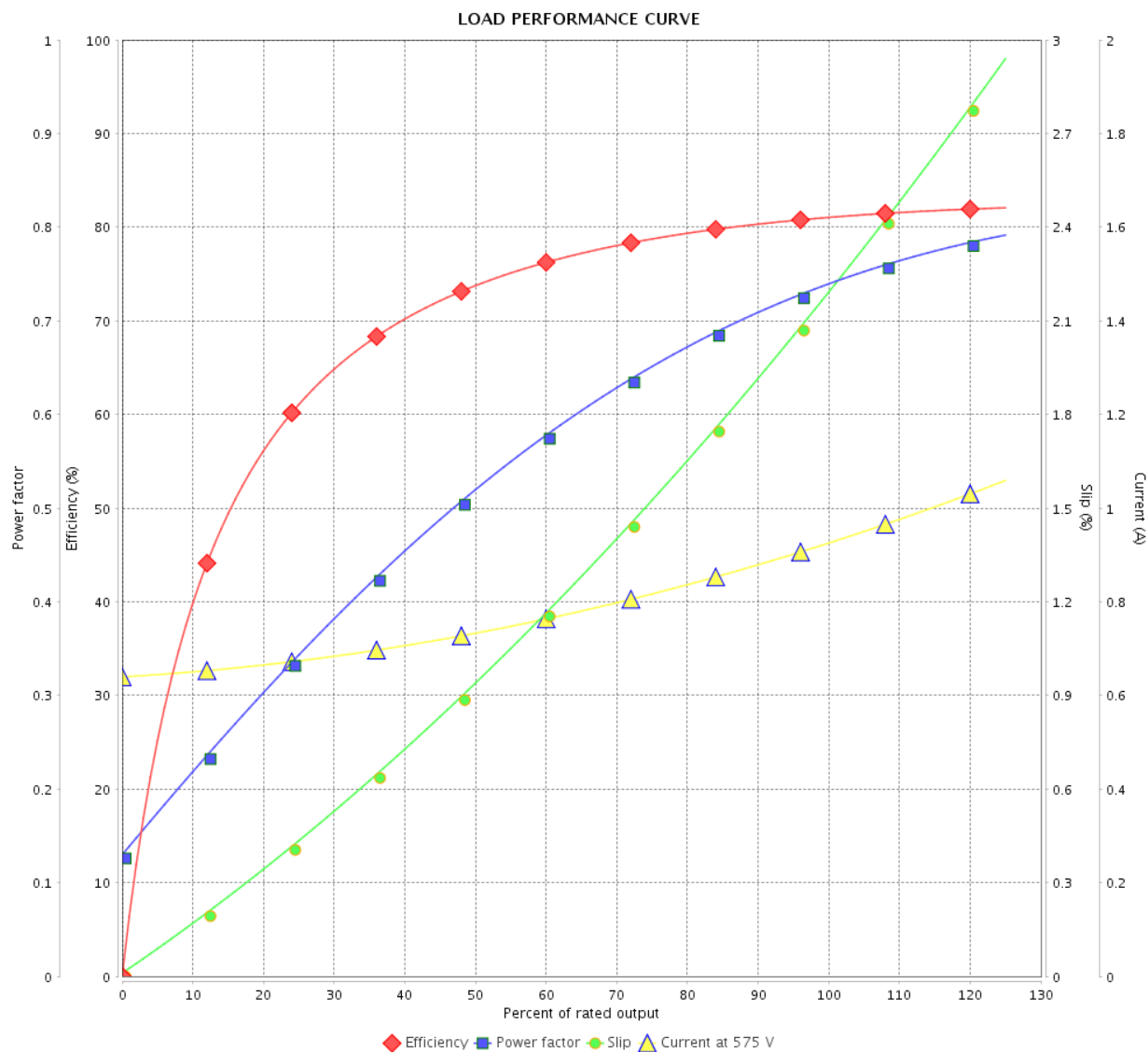
LOAD PERFORMANCE CURVE

Three Phase Induction Motor - Squirrel Cage



Customer :

Product line : Premium Efficiency Three-Phase Product code : 13989769

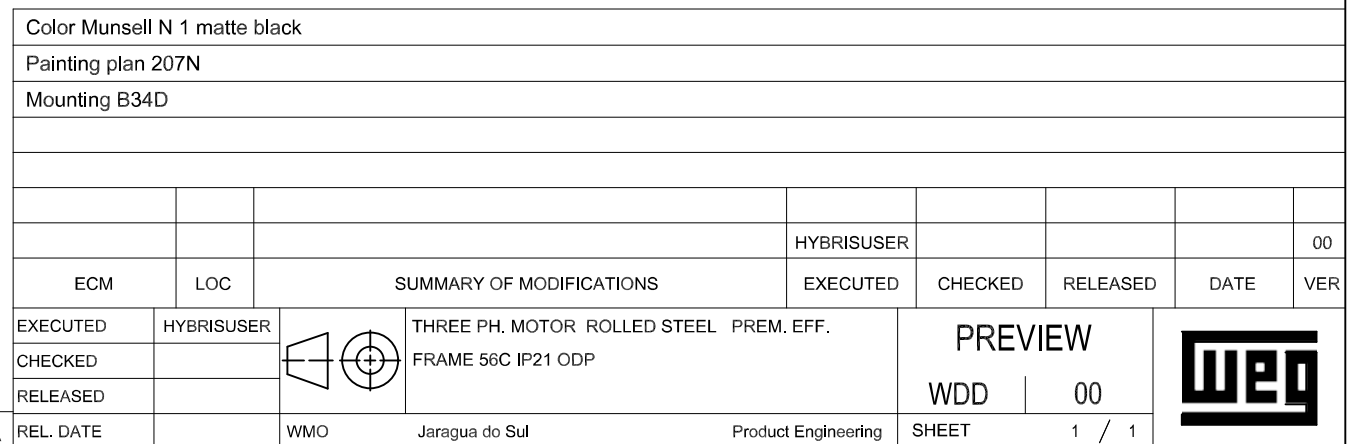
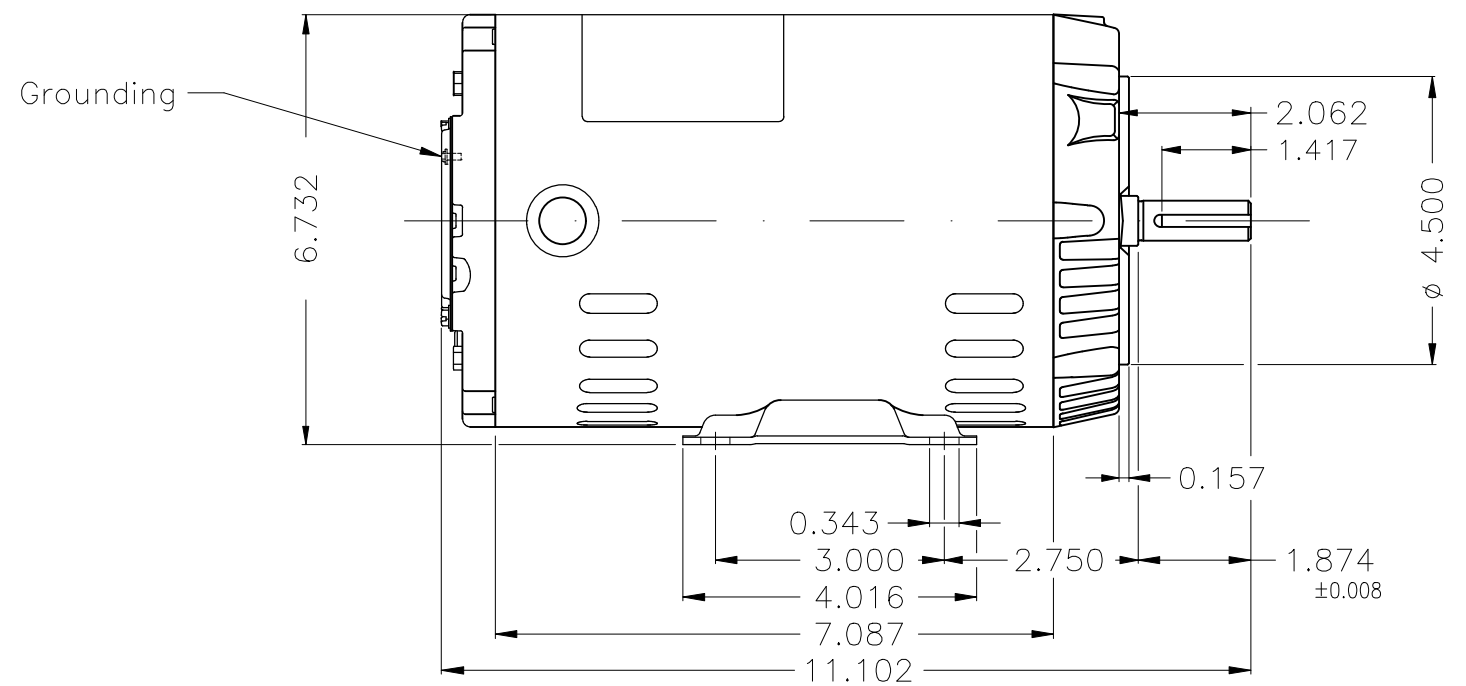


Performance : 575 V 60 Hz 4P

Rated current : 0.920 A
 LRC : 7.3
 Rated torque : 0.309 kgfm
 Locked rotor torque : 250 %
 Breakdown torque : 300 %
 Rated speed : 1760 rpm

Moment of inertia (J) : 0.0030 kgm²
 Duty cycle : Cont.(S1)
 Insulation class : F
 Service factor : 1.15
 Temperature rise : 80 K

Rev.	Changes Summary	Performed	Checked	Date
Performed by		Page 2 / 2Revision		
Checked by				
Date	11/05/2022			



WEG's property. Forbidden reproduction without previous authorization.