

DATA SHEET

Three Phase Induction Motor - Squirrel Cage



Customer :				
Product line		: Standard Efficiency Three-Phase	Product code :	13960952
Frame	: W56C	Cooling method	: IC411 - TEFC	
Insulation class	: F	Mounting	: F-1	
Duty cycle	: Cont.(S1)	Rotation ¹	: Both (CW and CCW)	
Ambient temperature	: -20°C to +40°C	Starting method	: Direct On Line	
Altitude	: 1000 m.a.s.l.	Approx. weight ³	: 6.3 kg	
Protection degree	: IP55	Moment of inertia (J)	: 0.0012 kgm ²	
Output [HP]	0.25			
Poles	4			
Frequency [Hz]	60			
Rated voltage [V]	575			
Rated current [A]	0.402			
L. R. Amperes [A]	2.13			
LRC [A]	5.3x(Code K)			
No load current [A]	0.332			
Rated speed [RPM]	1735			
Slip [%]	3.61			
Rated torque [kgfm]	0.105			
Locked rotor torque [%]	240			
Breakdown torque [%]	290			
Service factor	1.15			
Temperature rise	80 K			
Locked rotor time	54s (cold) 30s (hot)			
Noise level ²	50.0 dB(A)			
Efficiency (%)	25%			
	50%	55.0		
	75%	62.0		
	100%	66.0		
Power Factor	25%			
	50%	0.48		
	75%	0.59		
	100%	0.68		
Bearing type	: Drive end 6203 ZZ	Non drive end 6202 ZZ	Foundation loads	
Sealing	: V'Ring	V'Ring	Max. traction : 6 kgf	
Lubrication interval	: -	-	Max. compression : 12 kgf	
Lubricant amount	: -	-		
Lubricant type	: Mobil Polyrex EM			
Notes				
<p>This revision replaces and cancel the previous one, which must be eliminated.</p> <p>(1) Looking the motor from the shaft end.</p> <p>(2) Measured at 1m and with tolerance of +3dB(A).</p> <p>(3) Approximate weight subject to changes after manufacturing process.</p> <p>(4) At 100% of full load.</p>			<p>These are average values based on tests with sinusoidal power supply, subject to the tolerances stipulated in NEMA MG-1.</p>	
Rev.	Changes Summary		Performed	Checked
Performed by				
Checked by			Page	Revision
Date	11/05/2022		1 / 2	

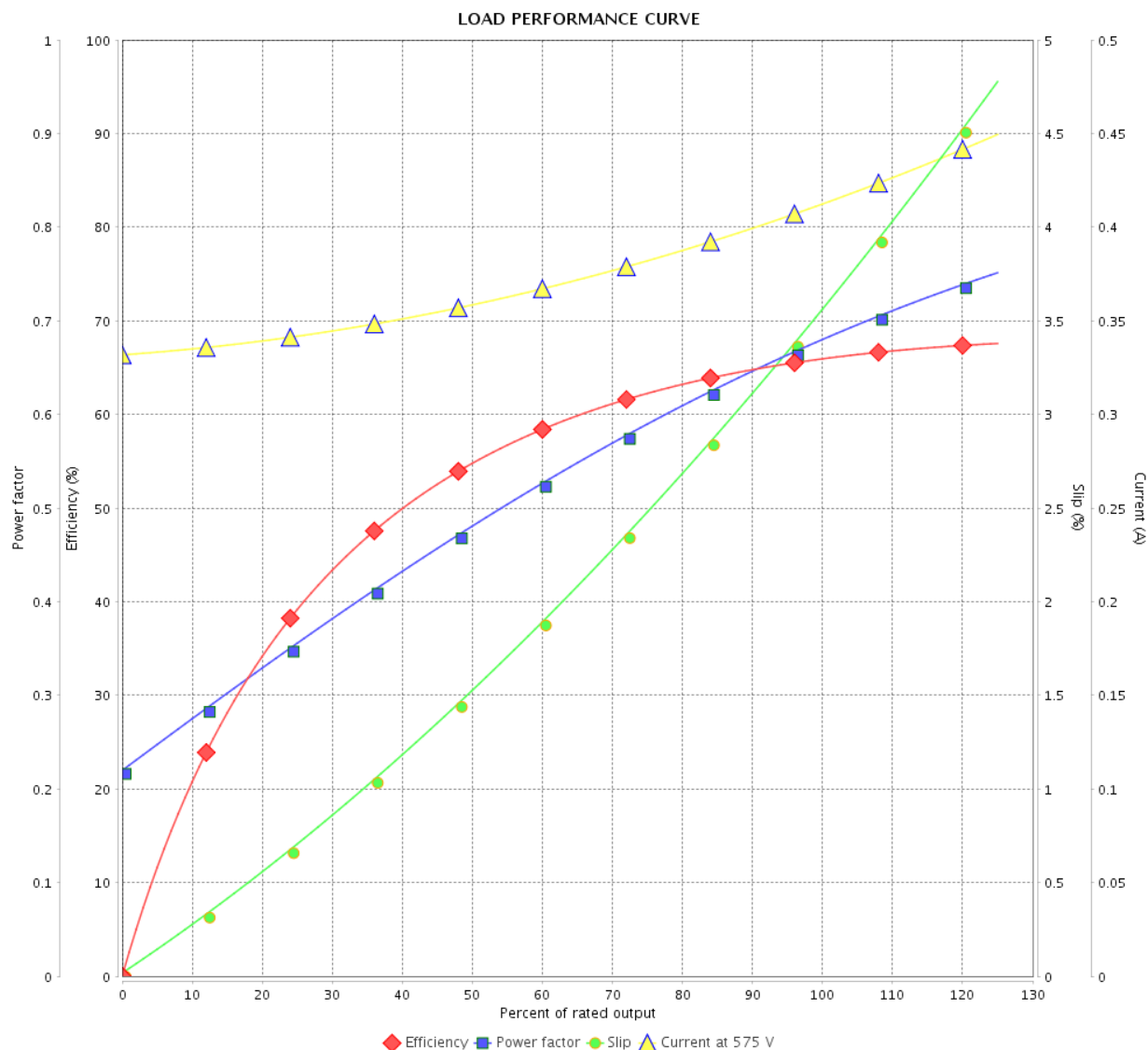
LOAD PERFORMANCE CURVE

Three Phase Induction Motor - Squirrel Cage



Customer :

Product line : Standard Efficiency Three-Phase Product code : 13960952

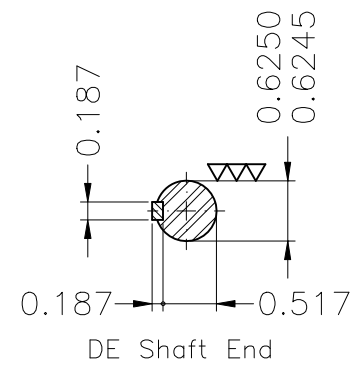
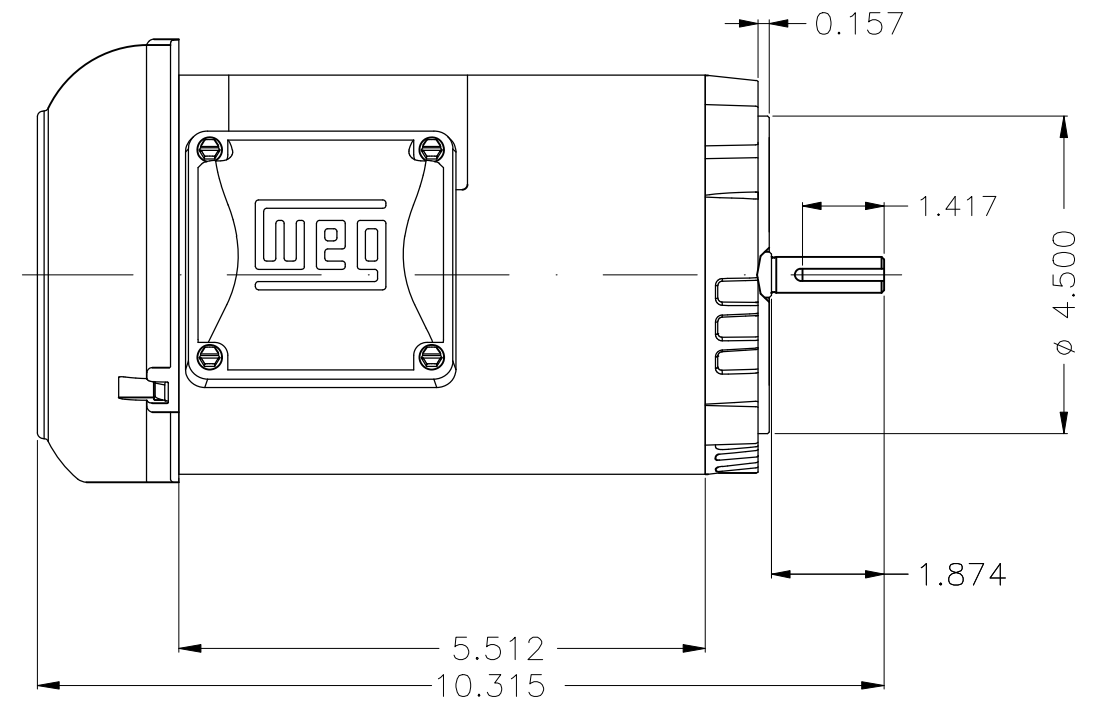
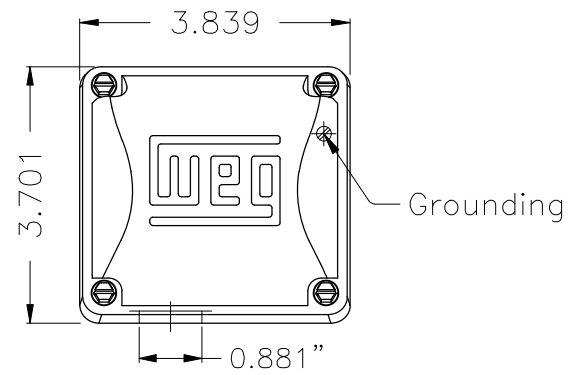




Performance : 575 V 60 Hz 4P

Rated current : 0.402 A
 LRC : 5.3
 Rated torque : 0.105 kgfm
 Locked rotor torque : 240 %
 Breakdown torque : 290 %
 Rated speed : 1735 rpm

Moment of inertia (J) : 0.0012 kgm²
 Duty cycle : Cont.(S1)
 Insulation class : F
 Service factor : 1.15
 Temperature rise : 80 K

Rev.	Changes Summary		Performed	Checked	Date
Performed by				Page	Revision
Checked by				2 / 2	
Date					



Color Munsell N 1 matte black																	
Painting plan 207N																	
Mounting F-1/B14R(D)																	
								HYBRISUSER								00	
ECM		LOC		SUMMARY OF MODIFICATIONS				EXECUTED		CHECKED		RELEASED		DATE		VER	
EXECUTED		HYBRISUSER				THREE PH. MOTOR ROLLED STEEL FRAME W56C IP55 TEFC				PREVIEW WDD 00							
CHECKED																	
RELEASED																	
REL. DATE				WMO		Jaragua do Sul		Product Engineering		SHEET		1 / 1					