

# DATA SHEET

## Three Phase Induction Motor - Squirrel Cage



Customer :	
Product line	: Jet Pump - J type Three-Phase
Product code :	13961578
Frame	: 56J
Insulation class	: F
Duty cycle	: Cont.(S1)
Ambient temperature	: -20°C to +40°C
Altitude	: 1000 m.a.s.l.
Design	: A
Cooling method	: IC01 - ODP
Mounting	: F-1
Rotation <sup>1</sup>	: CCW
Starting method	: Direct On Line
Approx. weight <sup>2</sup>	: 16.6 kg
Moment of inertia (J)	: 0.0049 kgm <sup>2</sup>
Output [HP]	2
Poles	2
Frequency [Hz]	60
Rated voltage [V]	230/460
Rated current [A]	4.84/2.42
L. R. Amperes [A]	43.1/21.5
LRC [A]	8.9x(Code K)
No load current [A]	1.83/0.917
Rated speed [RPM]	3510
Slip [%]	2.50
Rated torque [kgfm]	0.414
Locked rotor torque [%]	220
Breakdown torque [%]	330
Service factor	
Temperature rise	80 K
Locked rotor time	25s (cold) 14s (hot)
Noise level <sup>2</sup>	62.0 dB(A)
Efficiency (%)	25%
	50%
	75%
	100%
Power Factor	25%
	50%
	75%
	100%
Bearing type	: <u>Drive end</u> 6203 2RS <u>Non drive end</u> 6202 2RS
Sealing	: Without Bearing Seal Without Bearing Seal
Lubrication interval	: -
Lubricant amount	: -
Lubricant type	: Mobil Polyrex EM
Foundation loads	Max. traction : 36 kgf Max. compression : 53 kgf
Notes USABLE @208V 5.35A SF 1.00 SFA 5.35A	
This revision replaces and cancel the previous one, which must be eliminated. (1) Looking the motor from the shaft end. (2) Measured at 1m and with tolerance of +3dB(A). (3) Approximate weight subject to changes after manufacturing process. (4) At 100% of full load.	
These are average values based on tests with sinusoidal power supply, subject to the tolerances stipulated in NEMA MG-1.	
Rev.	Changes Summary
Performed by	Performed
Checked by	Checked
Date	Date
11/05/2022	
Page	Revision
1 / 4	

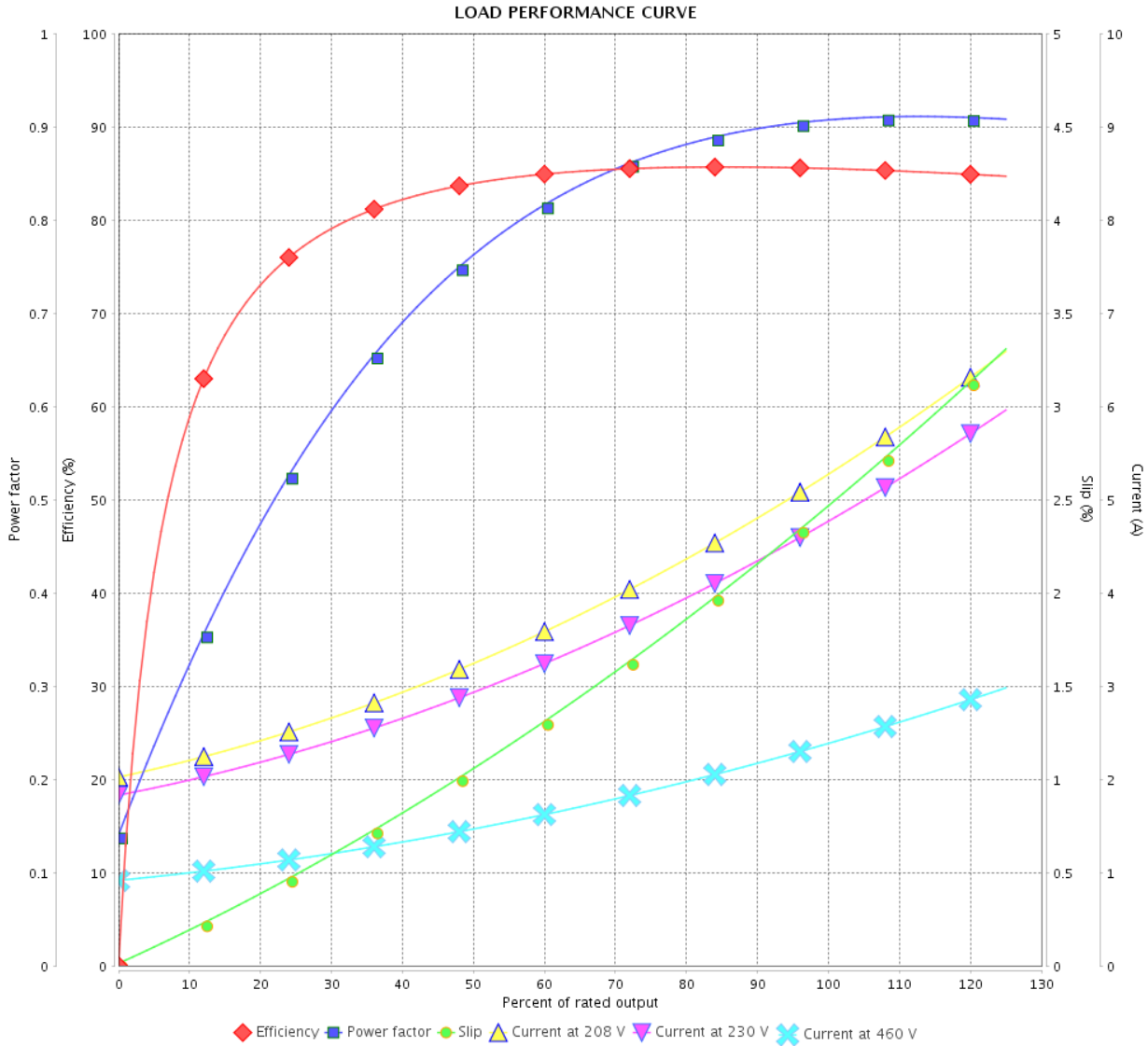
# LOAD PERFORMANCE CURVE

Three Phase Induction Motor - Squirrel Cage



Customer :

Product line : Jet Pump - J type Three-Phase Product code : 13961578



Performance : 230/460 V 60 Hz 2P

Rated current : 4.84/2.42 A  
 LRC : 8.9  
 Rated torque : 0.414 kgfm  
 Locked rotor torque : 220 %  
 Breakdown torque : 330 %  
 Rated speed : 3510 rpm

Moment of inertia (J) : 0.0049 kgm<sup>2</sup>  
 Duty cycle : Cont.(S1)  
 Insulation class : F  
 Service factor :  
 Temperature rise : 80 K  
 Design : A

Rev.	Changes Summary	Performed	Checked	Date
Performed by			Page 2 / 4	Revision
Checked by				
Date	11/05/2022			

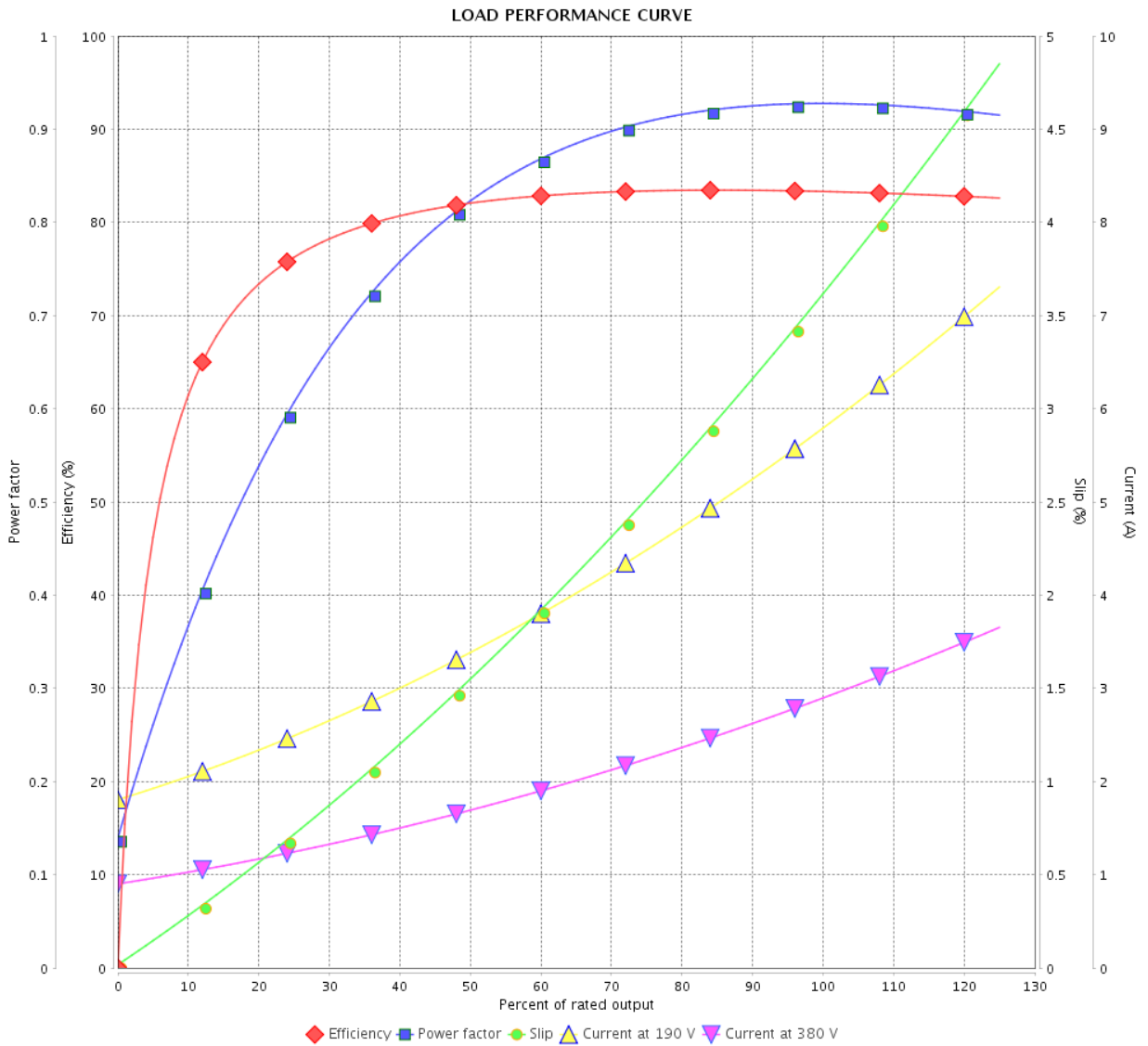
# LOAD PERFORMANCE CURVE

## Three Phase Induction Motor - Squirrel Cage



Customer : \_\_\_\_\_

Product line : Jet Pump - J type Three-Phase      Product code : 13961578



Performance : 190/380 V 50 Hz 2P

Rated current : 5.88/2.94 A  
 LRC : 6.9  
 Rated torque : 0.502 kgfm  
 Locked rotor torque : 180 %  
 Breakdown torque : 250 %  
 Rated speed : 2890 rpm

Moment of inertia (J) : 0.0049 kgm<sup>2</sup>  
 Duty cycle : Cont.(S1)  
 Insulation class : F  
 Service factor : 1.20  
 Temperature rise : 80 K  
 Design : A

Rev.	Changes Summary	Performed	Checked	Date
Performed by			Page	Revision
Checked by				
Date				

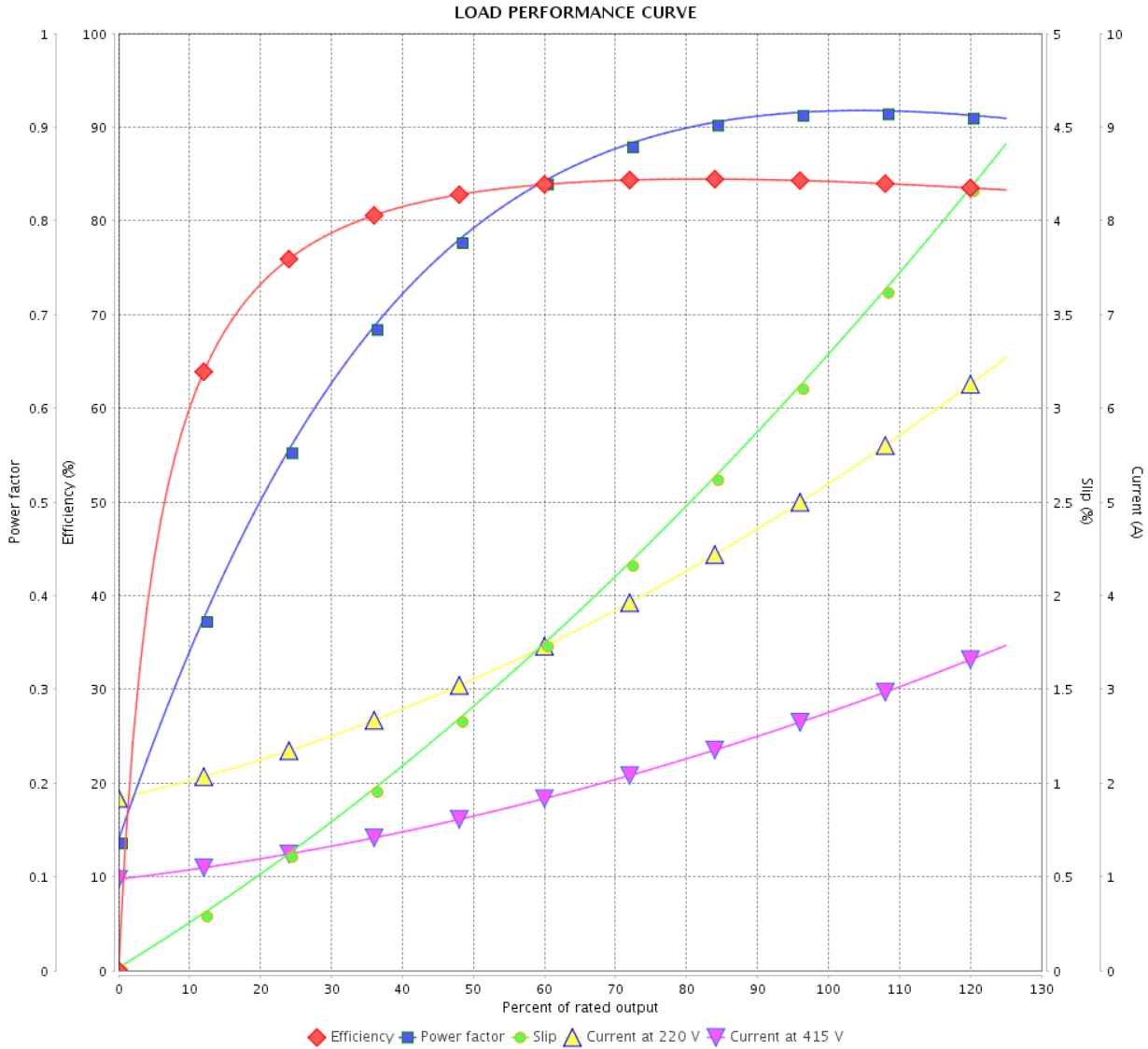
# LOAD PERFORMANCE CURVE

Three Phase Induction Motor - Squirrel Cage



Customer :

Product line : Jet Pump - J type Three-Phase      Product code : 13961578

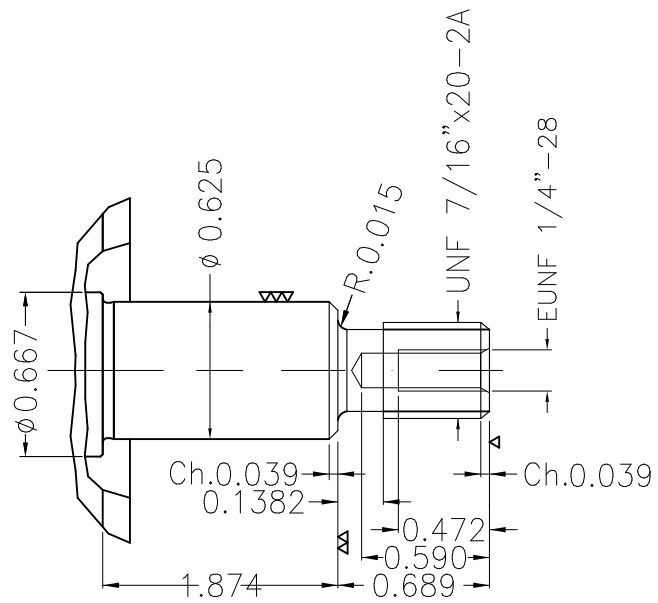
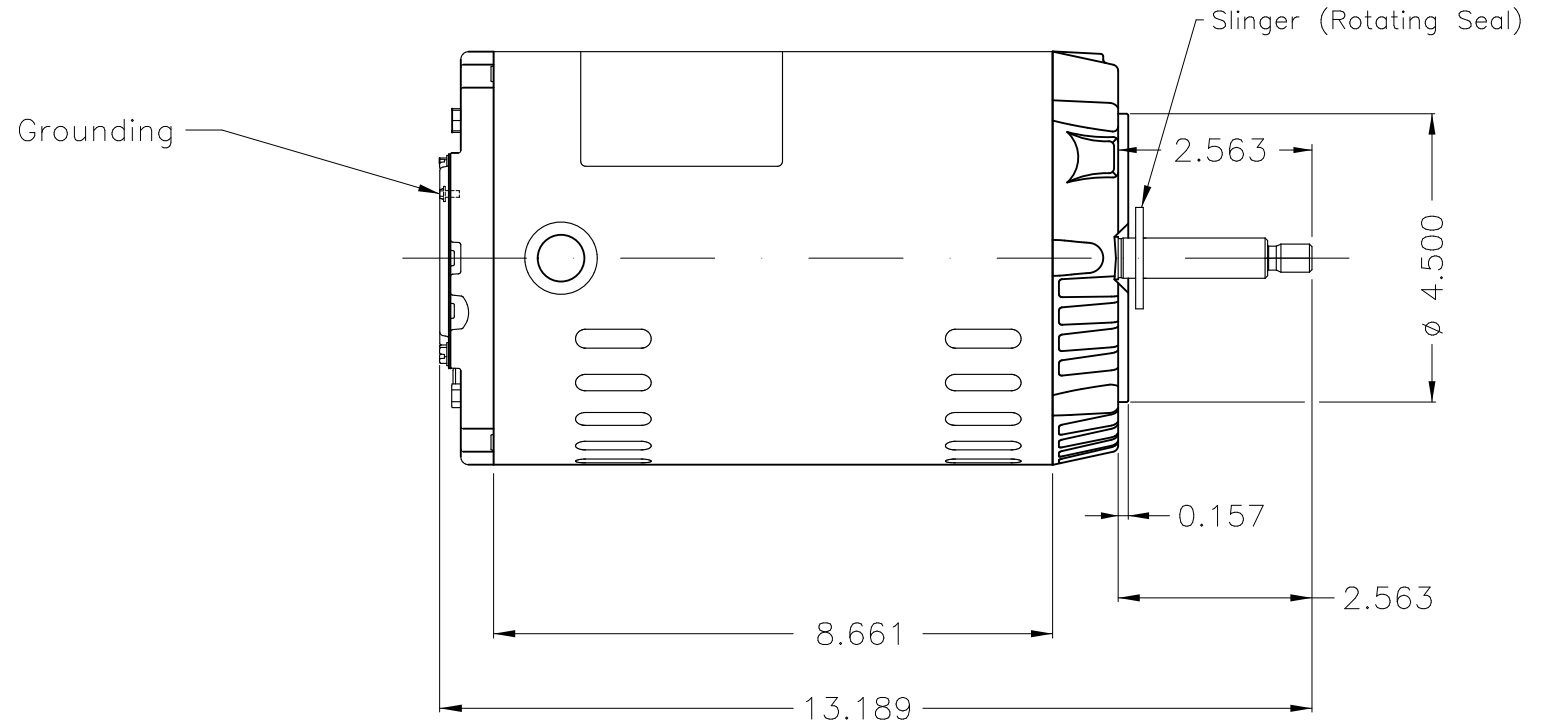
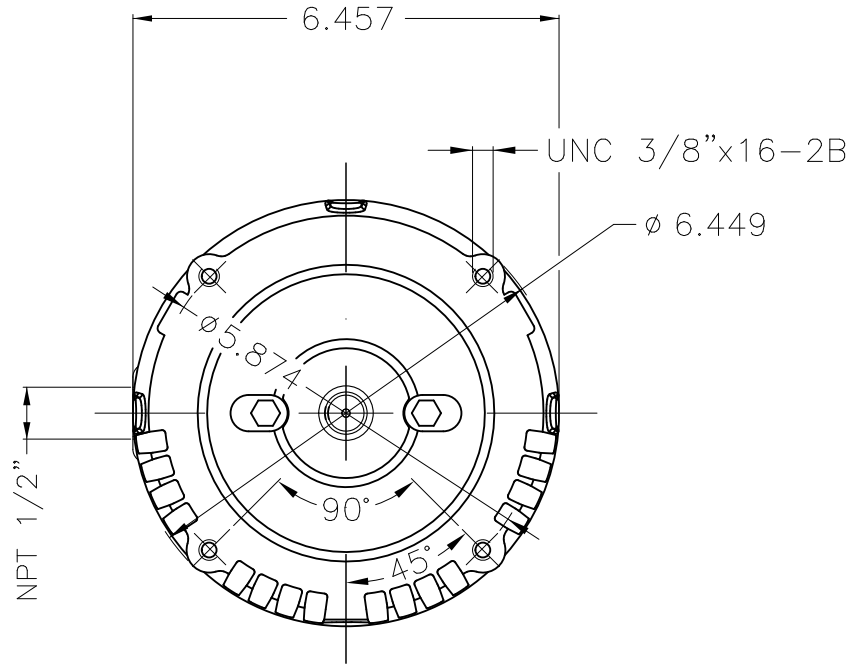
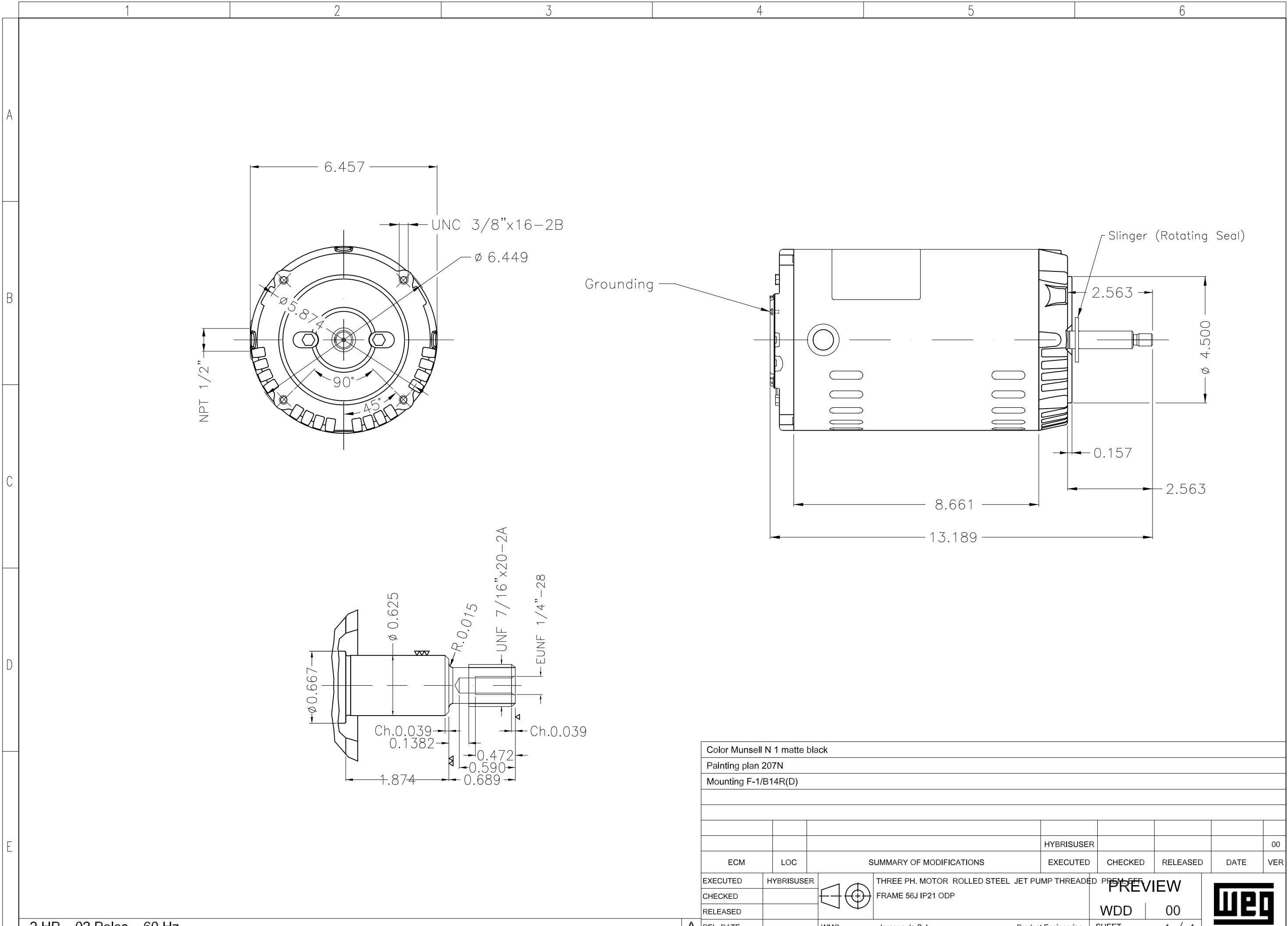


Performance : 220/415 V 50 Hz 2P

Rated current : 5.26/2.79 A  
 LRC : 7.6  
 Rated torque : 0.501 kgfm  
 Locked rotor torque : 200 %  
 Breakdown torque : 280 %  
 Rated speed : 2900 rpm

Moment of inertia (J) : 0.0049 kgm<sup>2</sup>  
 Duty cycle : Cont.(S1)  
 Insulation class : F  
 Service factor : 1.20  
 Temperature rise : 80 K  
 Design : A

Rev.	Changes Summary	Performed	Checked	Date
Performed by			Page	Revision
Checked by				
Date				



Color Munsell N 1 matte black  
Painting plan 207N  
Mounting F-1/B14R(D)

ECM	LOC	SUMMARY OF MODIFICATIONS	EXECUTED	CHECKED	RELEASED	DATE	VER
EXECUTED	HYBRISUSER	THREE PH. MOTOR ROLLED STEEL JET PUMP THREADED PUMP					00
CHECKED		FRAME 56J IP21 ODP					
RELEASED							
REL. DATE	WMO	Jaragua do Sul	Product Engineering	WDD	00		
			SHEET		1 / 1		

2 HP 02 Poles 60 Hz

A