

DATA SHEET

Single Phase Induction Motor - Squirrel Cage



Customer :				
Product line : Single-Phase		Product code : 14363174		
Frame : W56 Insulation class : F Duty cycle : Cont.(S1) Ambient temperature : -20°C to +40°C Altitude : 1000 m.a.s.l. Protection degree : IP55 Design : N		Cooling method : IC411 - TEFC Mounting : F-1 Rotation ¹ : Both (CW and CCW) Starting method : Direct On Line Approx. weight ³ : 9.6 kg Moment of inertia (J) : 0.0010 kgm²		
Output [HP]		0.5		
Poles		2		
Frequency [Hz]		60		
Rated voltage [V]		115/208-230		
Rated current [A]		7.00/3.87-3.50		
L. R. Amperes [A]		56.0/31.0-28.0		
LRC [A]		8.0x(Code P)		
No load current [A]		4.80/2.07-2.40		
Rated speed [RPM]		3500		
Slip [%]		2.78		
Rated torque [kgfm]		0.104		
Locked rotor torque [%]		290		
Breakdown torque [%]		300		
Service factor				
Temperature rise		80 K		
Locked rotor time		12s (cold) 7s (hot)		
Noise level ²		66.0 dB(A)		
Efficiency (%)	25%			
	50%	50.0		
	75%	58.0		
	100%	60.0		
Power Factor	25%			
	50%	0.59		
	75%	0.69		
	100%	0.76		
Bearing type : Drive end 6203 ZZ Non drive end 6202 ZZ Sealing : V'Ring Without Bearing Seal Lubrication interval : - - Lubricant amount : - - Lubricant type : Mobil Polyrex EM		Foundation loads Max. traction : 5 kgf Max. compression : 14 kgf		
Notes				
This revision replaces and cancel the previous one, which must be eliminated. (1) Looking the motor from the shaft end. (2) Measured at 1m and with tolerance of +3dB(A). (3) Approximate weight subject to changes after manufacturing process. (4) At 100% of full load.		These are average values based on tests with sinusoidal power supply, subject to the tolerances stipulated in NEMA MG-1.		
Rev.	Changes Summary		Performed	Checked
Performed by				
Checked by			Page	Revision
Date	11/05/2022		1 / 2	

LOAD PERFORMANCE CURVE

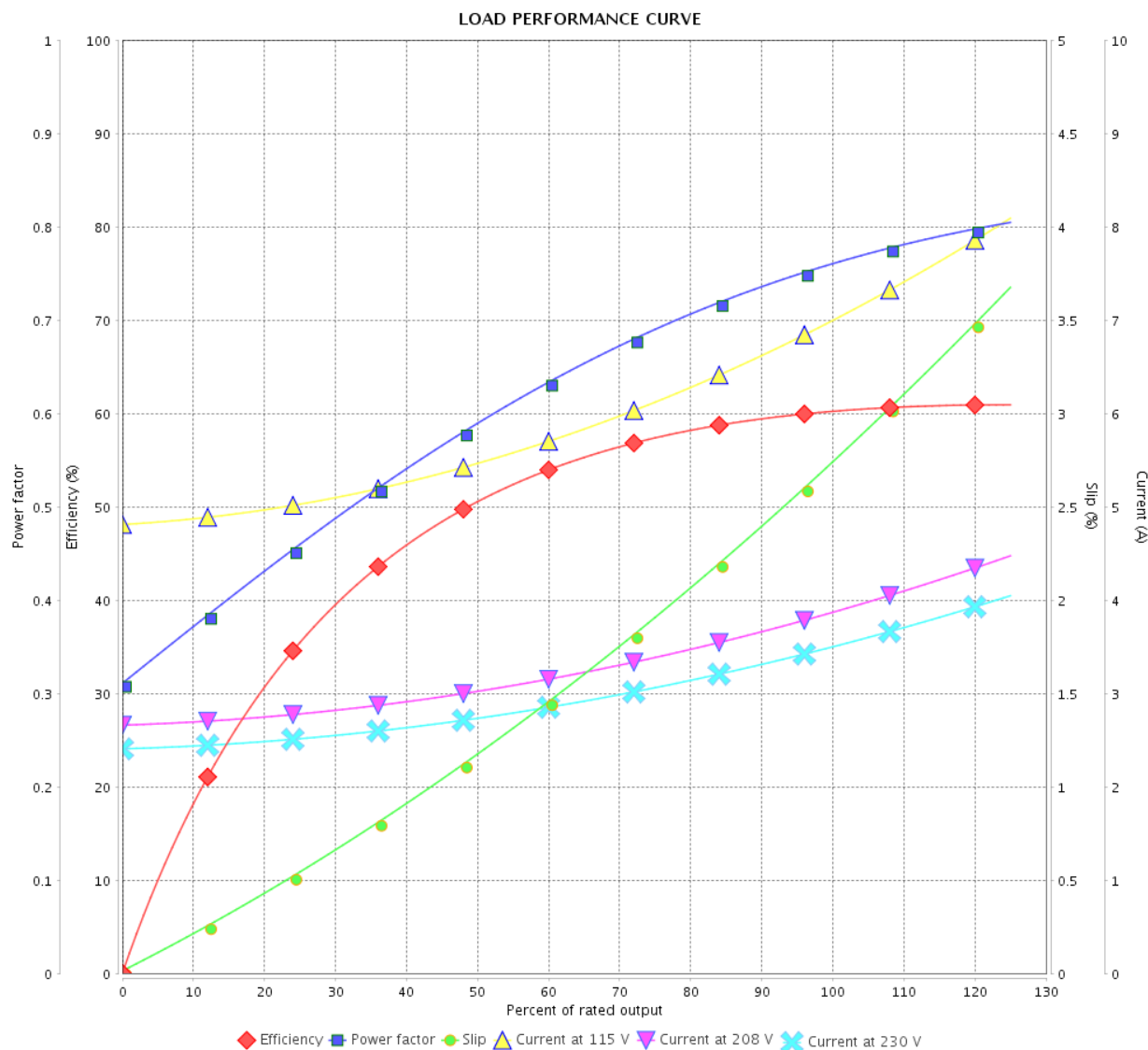
Single Phase Induction Motor - Squirrel Cage



Customer :

Product line : Single-Phase

Product code : 14363174

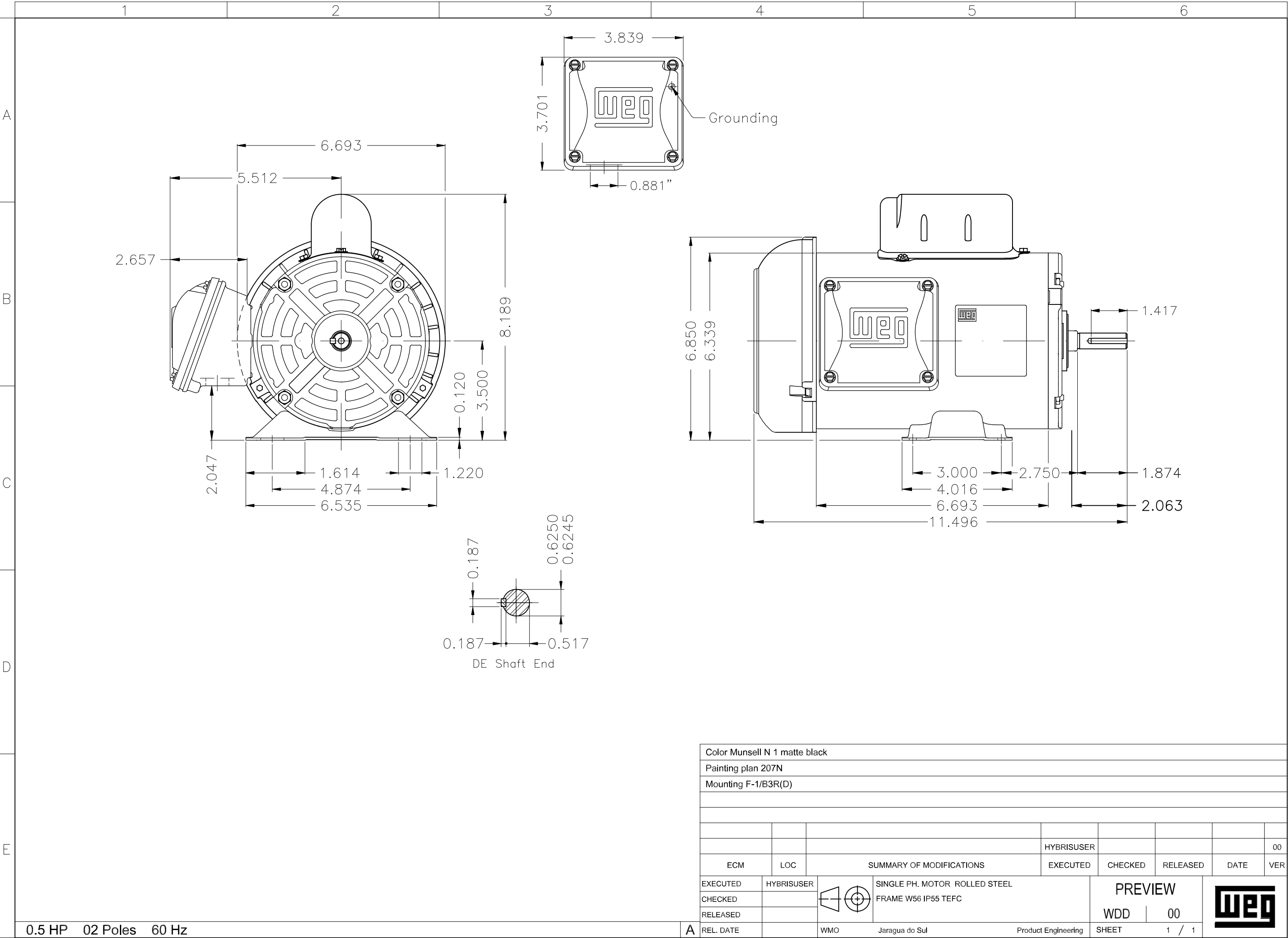


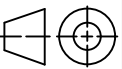

Performance : 115/208-230 V 60 Hz 2P

Rated current : 7.00/3.87-3.50 A
 LRC : 8.0
 Rated torque : 0.104 kgfm
 Locked rotor torque : 290 %
 Breakdown torque : 300 %
 Rated speed : 3500 rpm

Moment of inertia (J) : 0.0010 kgm²
 Duty cycle : Cont.(S1)
 Insulation class : F
 Service factor :
 Temperature rise : 80 K
 Design : N

Rev.	Changes Summary	Performed	Checked	Date
Performed by		Page 2 / 2 Revision		
Checked by				
Date	11/05/2022			



Color Munsell N 1 matte black									
Painting plan 207N									
Mounting F-1/B3R(D)									
				HYBRISUSER					00
ECM	LOC	SUMMARY OF MODIFICATIONS			EXECUTED	CHECKED	RELEASED	DATE	VER
EXECUTED	HYBRISUSER	 SINGLE PH. MOTOR ROLLED STEEL FRAME W56 IP55 TEFC			PREVIEW				
CHECKED									
RELEASED									
REL. DATE		WMO	Jaragua do Sul	Product Engineering	SHEET	1 / 1			

0.5 HP 02 Poles 60 Hz

A